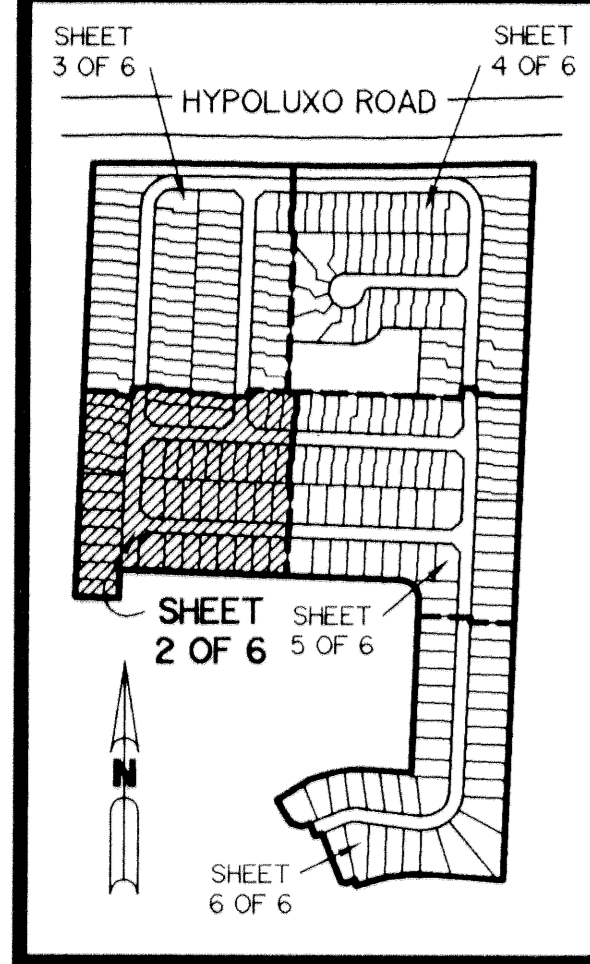


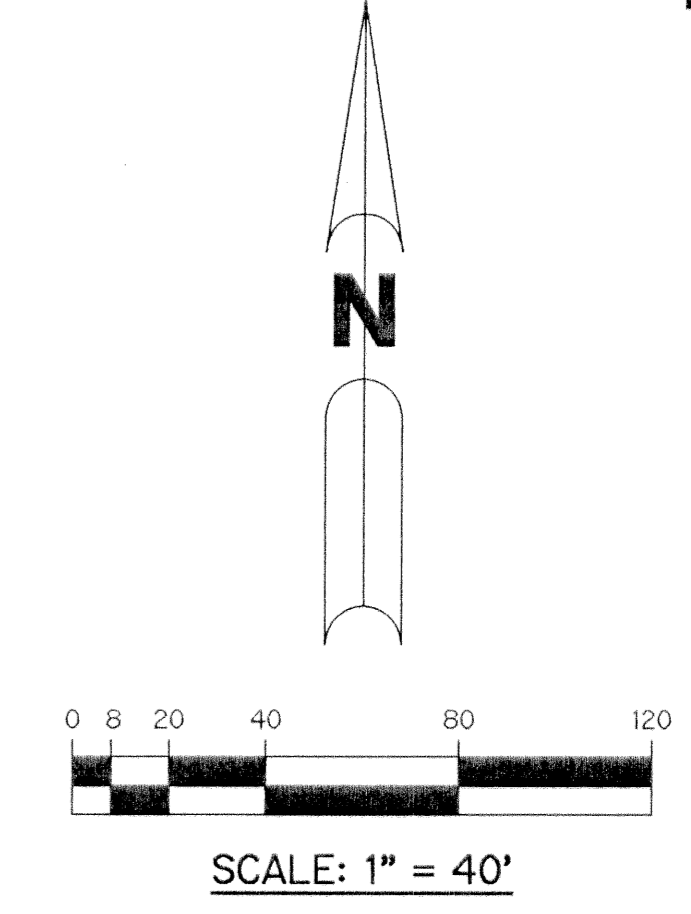
# NAUTICA SOUND P.U.D. - PLAT TWO

A PARCEL OF LAND LYING IN SECTION 7,  
TOWNSHIP 45 SOUTH, RANGE 43 EAST, CITY OF BOYNTON BEACH,  
PALM BEACH COUNTY, FLORIDA.

SHEET 2 OF 6      JANUARY, 1996



KEY MAP  
N.T.S.



- LEGEND:**
- - PERMANENT REFERENCE MONUMENT, PLS #4190
  - - FOUND PERMANENT REFERENCE MONUMENT, PLS #4190
  - - PERMANENT CONTROL POINT, PLS #4190
  - △ - DELTA ANGLE
  - ⊙ - CENTERLINE
  - D.E. - DRAINAGE EASEMENT
  - F.P.L.E. - FLORIDA POWER & LIGHT EASEMENT
  - L - ARC LENGTH
  - L.A.E. - LIMITED ACCESS EASEMENT
  - L.E. - LANDSCAPE EASEMENT
  - L.M.A.E. - LAKE MAINTENANCE ACCESS EASEMENT
  - L.M.E. - LAKE MAINTENANCE EASEMENT
  - L.W.D.D. - LAKE WORTH DRAINAGE DISTRICT
  - M.E. - DRAINAGE, MAINTENANCE AND OVERHANG EASEMENT
  - N.R. - NOT RADIAL
  - N.T.S. - NOT TO SCALE
  - O.R.B. - OFFICIAL RECORD BOOK
  - P.B. - PLAT BOOK
  - P.G.S. - PAGES
  - PLS - PROFESSIONAL LAND SURVEYOR
  - P.S.M. - PROFESSIONAL SURVEYOR AND MAPPER
  - R - RADIUS
  - R/W - RIGHT-OF-WAY
  - S.T. - SURVEY TIE
  - U.E. - UTILITY EASEMENT

THIS INSTRUMENT PREPARED BY  
WILBUR F. DIVINE, P.S.M. 4190, STATE OF FLORIDA  
LAWSON, NOBLE AND WEBB, INC.  
ENGINEERS PLANNERS SURVEYORS  
WEST PALM BEACH, FLORIDA

BOOK 77      PAGE 154  
FLOOD ZONE      FLOOD MAP #  
QUAD #      ZONING  
SE      ZIP CODE  
PUD NAME      City of Boynton Beach

NAUTICA SOUND P.U.D. - PLAT ONE  
(P.B. 76, PGS. 196 - 202)

NAUTICA SOUND P.U.D. - PLAT ONE  
(P.B. 76, PGS. 196 - 202)