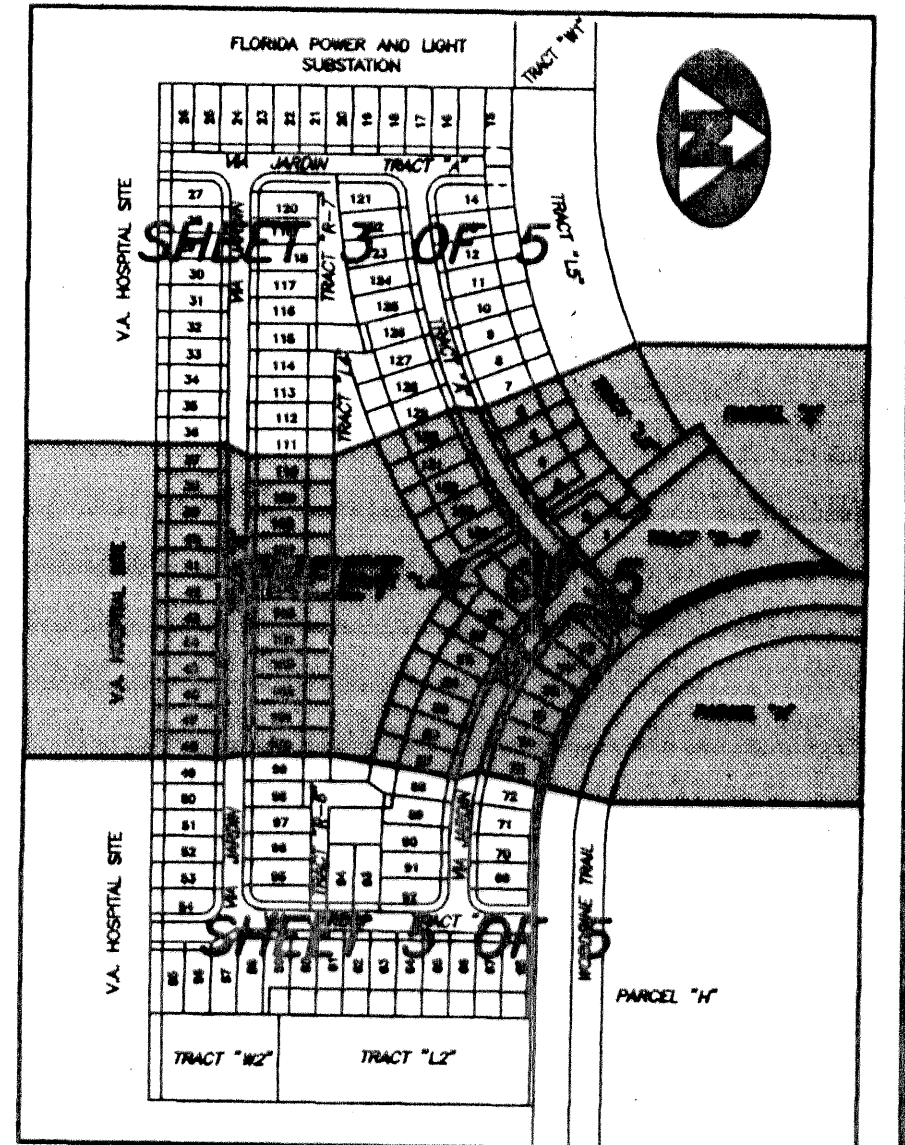
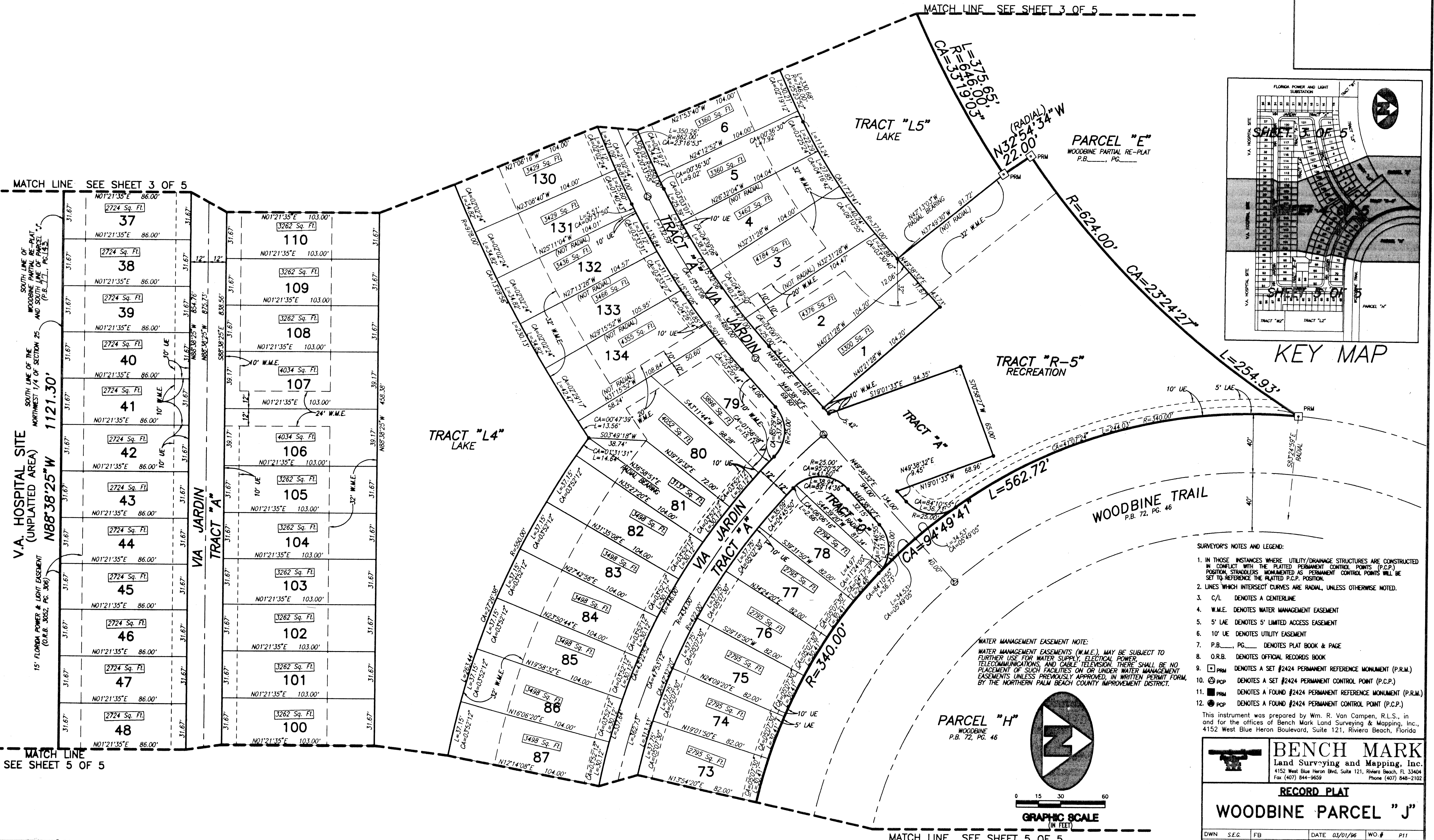


# WOODBINE PARCEL "J"

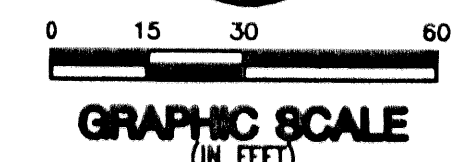
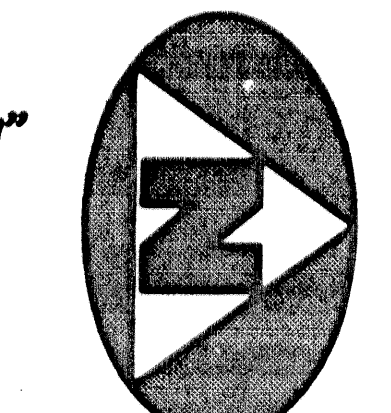
(A PART OF WOODBINE RESIDENTIAL PLANNED UNIT DEVELOPMENT)  
LYING IN THE NORTHWEST ONE-QUARTER OF SECTION 25, TOWNSHIP 42 SOUTH, RANGE 42 EAST, CITY OF RIVIERA BEACH, PALM BEACH COUNTY, FLORIDA, AND BEING A RE-PLAT OF PARCEL "J", WOODBINE PARTIAL RE-PLAT, AS RECORDED IN PLAT BOOK 77, PAGE 43, PUBLIC RECORDS, PALM BEACH COUNTY, FLORIDA.



- SURVEYOR'S NOTES AND LEGEND:**
1. IN THOSE INSTANCES WHERE UTILITY/DRAINAGE STRUCTURES ARE CONSTRUCTED IN CONFLICT WITH THE PLATTED PERMANENT CONTROL POINTS (P.C.P.) POSITION, STRADDERS MONUMENTED AS PERMANENT CONTROL POINTS WILL BE SET TO REFERENCE THE PLATTED P.C.P. POSITION.
  2. LINES WHICH INTERSECT CURVES ARE RADIAL, UNLESS OTHERWISE NOTED.
  3. C/L DENOTES A CENTERLINE.
  4. W.M.E. DENOTES WATER MANAGEMENT EASEMENT.
  5. 5' L.A.E. DENOTES 5' LIMITED ACCESS EASEMENT.
  6. 10' U.E. DENOTES UTILITY EASEMENT.
  7. P.B., PG. DENOTES PLAT BOOK & PAGE.
  8. O.R.B. DENOTES OFFICIAL RECORDS BOOK.
  9. DENOTES A SET #2424 PERMANENT REFERENCE MONUMENT (P.R.M.).
  10. DENOTES A SET #2424 PERMANENT CONTROL POINT (P.C.P.).
  11. DENOTES A FOUND #2424 PERMANENT REFERENCE MONUMENT (P.R.M.).
  12. DENOTES A FOUND #2424 PERMANENT CONTROL POINT (P.C.P.).

**WATER MANAGEMENT EASEMENT NOTE:**  
WATER MANAGEMENT EASEMENTS (W.M.E.) MAY BE SUBJECT TO FURTHER USE FOR WATER SUPPLY, ELECTRICAL POWER, TELECOMMUNICATIONS, AND CABLE TELEVISION. THERE SHALL BE NO PLACEMENT OF SUCH FACILITIES ON OR UNDER WATER MANAGEMENT EASEMENTS UNLESS PREVIOUSLY APPROVED IN WRITTEN PERMIT FORM BY THE NORTHERN PALM BEACH COUNTY IMPROVEMENT DISTRICT.

**PARCEL "H"**  
WOODBINE  
P.B. 72, PG. 46



**BENCH MARK**  
Land Surveying and Mapping, Inc.  
4152 West Blue Heron Blvd, Suite 121, Riviera Beach, FL 33404  
Fax (407) 844-9659 Phone (407) 848-2102

<b>RECORD PLAT</b>				
<b>WOODBINE PARCEL "J"</b>				
DWN	S.E.G.	FB	DATE 03/01/96	WO # P11
CKD	FILE	PLAT.dwg	SCALE 1" = 30'	SHEET 4 OF 5