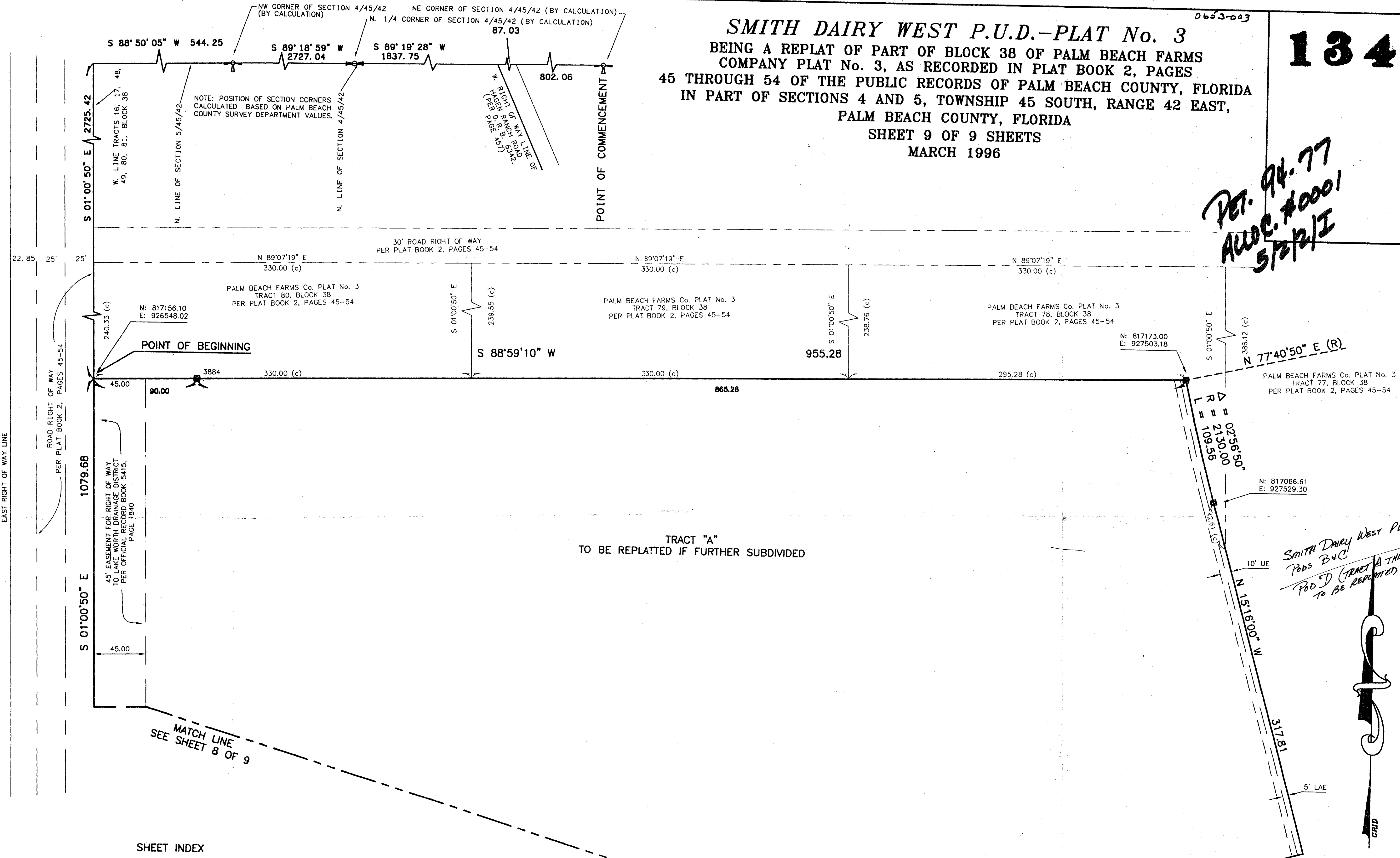


0653-003

134

SMITH DAIRY WEST P.U.D.-PLAT No. 3
 BEING A REPLAT OF PART OF BLOCK 38 OF PALM BEACH FARMS
 COMPANY PLAT No. 3, AS RECORDED IN PLAT BOOK 2, PAGES
 45 THROUGH 54 OF THE PUBLIC RECORDS OF PALM BEACH COUNTY, FLORIDA
 IN PART OF SECTIONS 4 AND 5, TOWNSHIP 45 SOUTH, RANGE 42 EAST,
 PALM BEACH COUNTY, FLORIDA
 SHEET 9 OF 9 SHEETS
 MARCH 1996

*Pet. 94-77
 Alloc. #0001
 5/2/2/I*



SUNSHINE STATE PARKWAY
 PER THE 1955 RIGHT OF WAY MAP
 PREPARED BY GANNETT, FLEMING, CORDRY & CARPENTER, INC.
 SHEET 8 OF 13
 EAST RIGHT OF WAY LINE

POINT OF BEGINNING

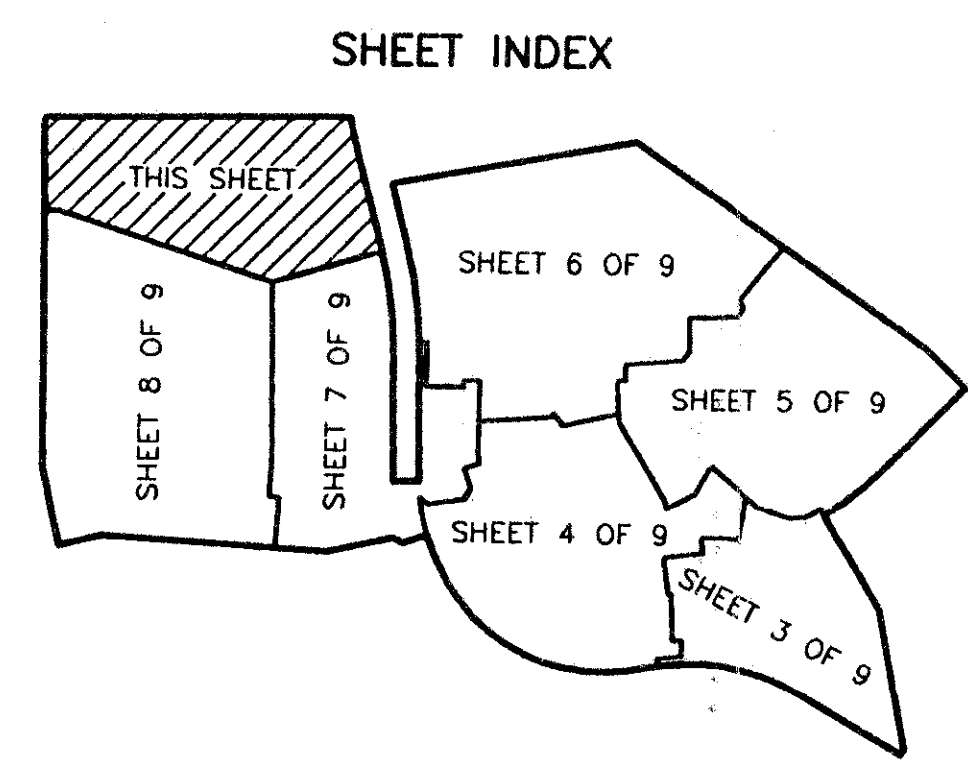
TRACT "A"
 TO BE REPLATED IF FURTHER SUBDIVIDED

*SMITH DAIRY WEST PUD
 Pods B+C
 Pod D (TRACT A THIS PLAT)
 TO BE REPLATED*

MATCH LINE
 SEE SHEET 8 OF 9

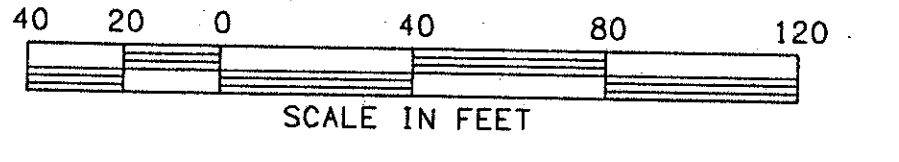
MATCH LINE
 SEE SHEET 8 OF 9

MATCH LINE
 SEE SHEET 7 OF 9



- LEGEND:
- = PERMANENT REFERENCE MONUMENT "P. L. S. 4828"
 - = PERMANENT CONTROL POINT "P. C. P. 4828"
 - R = RADIUS
 - L = ARC LENGTH
 - Δ = DELTA (CENTRAL ANGLE)
 - PC = POINT OF CURVATURE
 - PT = POINT OF TANGENCY
 - PSM = PROFESSIONAL SURVEYOR & MAPPER
 - PLS = PROFESSIONAL LAND SURVEYOR
 - UE = UTILITY EASEMENT
 - DE = DRAINAGE EASEMENT
 - LME = LAKE MAINTENANCE EASEMENT
 - N = NORTHING (GRID)
 - E = EASTING (GRID)
 - (c) = CALCULATED
 - (R) = RADIAL
 - MREE = MAINTENANCE AND ROOF EAVE EASEMENT
 - LAE = LIMITED ACCESS EASEMENT

0653-003



SUBDIVISION *Smith Dairy West*
 BOOK *77*
 PAGE *134*
 FLOOD MAP *#170A*
 ZONING *PUD*
 QUAD *#49*
 SE *94-77*
 ZIP CODE *33447*
 PUD NAME *SMITH DAIRY WEST*

SCALE: 1"= 40'	NICK MILLER, INC. Surveying Planning & Development Consultants	DRAWN BY:
DATE: MARCH 1996		CHK:
SMITH DAIRY WEST P.U.D.-PLAT No. 3		
2560 RCA Blvd. • Suite 105 Palm Beach Gardens, Florida 33410 (407) 222-5700		DRAWING NUMBER 94014AF