

SMITH DAIRY WEST P.U.D.-PLAT No. 3
 BEING A REPLAT OF PART OF BLOCK 38 OF PALM BEACH FARMS
 COMPANY PLAT No. 3, AS RECORDED IN PLAT BOOK 2, PAGES
 45 THROUGH 54 OF THE PUBLIC RECORDS OF PALM BEACH COUNTY, FLORIDA
 IN PART OF SECTIONS 4 AND 5, TOWNSHIP 45 SOUTH, RANGE 42 EAST,
 PALM BEACH COUNTY, FLORIDA

SHEET 8 OF 9 SHEETS
MARCH 1996

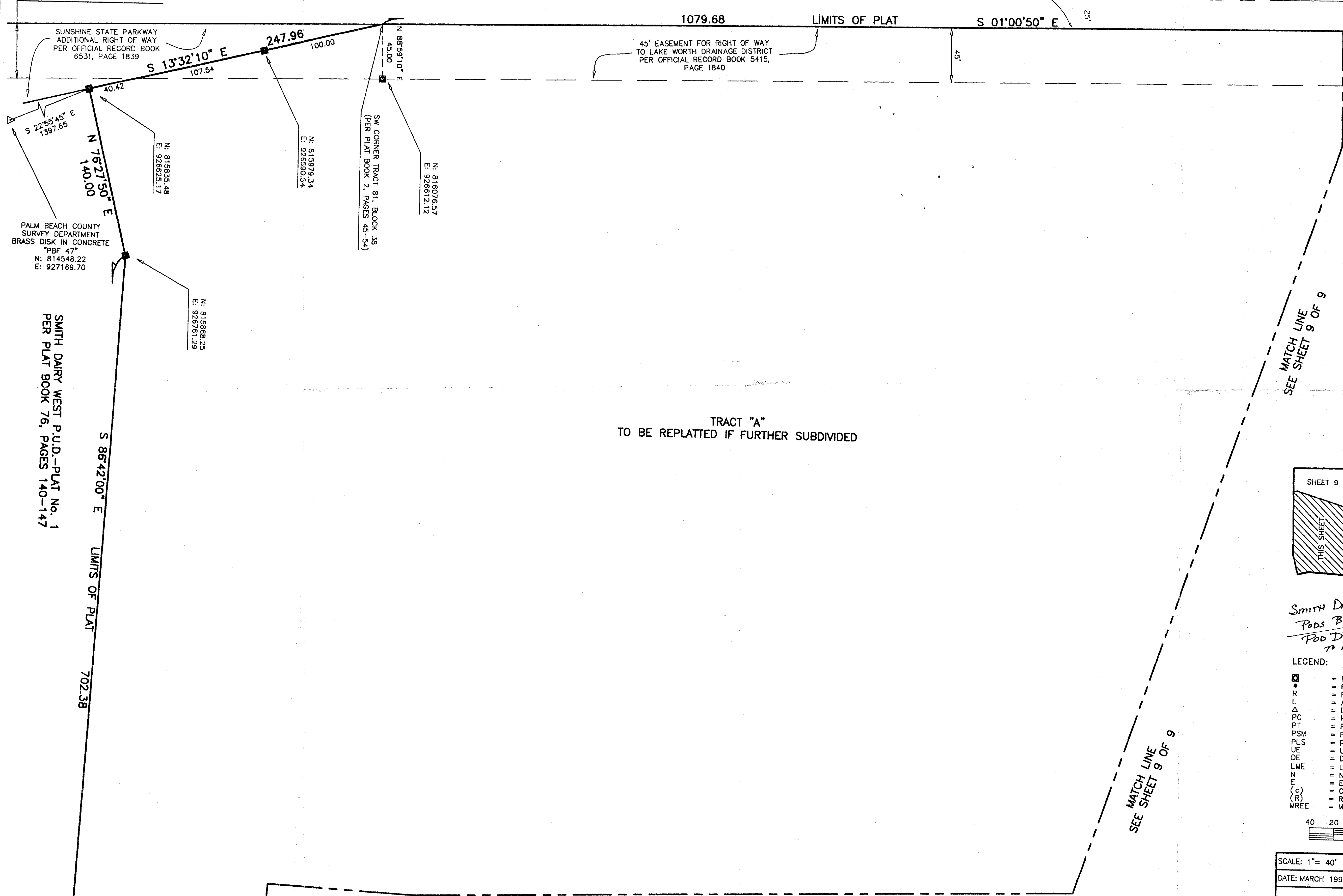
SUNSHINE STATE PARKWAY
 PER THE 1955 RIGHT OF WAY MAP
 PREPARED BY GANNETT, FLEMING, CORDRY & CARPENTER, INC.
 SHEET 8 OF 13
 EAST RIGHT OF WAY LINE

0653-003

133

45' EASEMENT FOR RIGHT OF WAY
 TO LAKE WORTH DRAINAGE DISTRICT
 PER OFFICIAL RECORD BOOK 5415,
 PAGE 1840

ROAD RIGHT OF WAY
 PER PLAT BOOK 2, PAGES 45-54



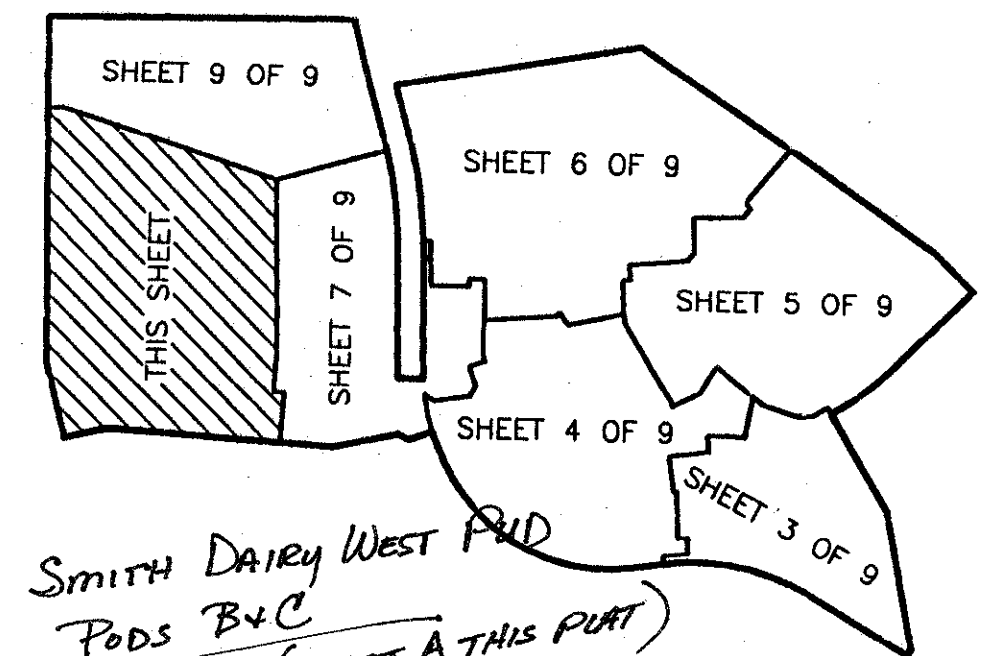
PET. 94-77
ALOC. #0001
5/2/2/I

0653-003

TRACT "A"
 TO BE REPLATED IF FURTHER SUBDIVIDED

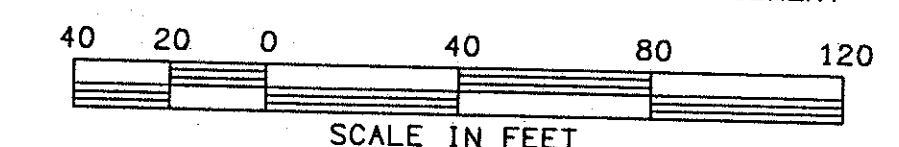
MATCH LINE
 SEE SHEET 9 OF 9

SHEET INDEX



LEGEND:

- ☐ = PERMANENT REFERENCE MONUMENT "P. L. S. 4828"
- = PERMANENT CONTROL POINT "P.C.P. 4828"
- R = RADIUS
- L = ARC LENGTH
- Δ = DELTA (CENTRAL ANGLE)
- PC = POINT OF CURVATURE
- PT = POINT OF TANGENCY
- PSM = PROFESSIONAL SURVEYOR & MAPPER
- PLS = PROFESSIONAL LAND SURVEYOR
- UE = UTILITY EASEMENT
- DE = DRAINAGE EASEMENT
- LME = LAKE MAINTENANCE EASEMENT
- N = NORTHING (GRID)
- E = EASTING (GRID)
- (C) = CALCULATED
- (R) = RADIAL
- MREE = MAINTENANCE AND ROOF EAVE EASEMENT



SCALE: 1"= 40'
 DATE: MARCH 1996
NICK MILLER, INC.
Surveying
Planning & Development
Consultants
 DRAWN BY:
 CHK:

SMITH DAIRY WEST P.U.D.-PLAT No. ?

2560 RCA Blvd. • Suite 105
 Palm Beach Gardens, Florida 33410
 DRAWING NUMBER:

SUBDIVISION: SMITH DAIRY WEST
 BOOK: 77
 PAGE: 133
 FLOOD ZONE: B
 FLOOD MAP: #170A
 ZONING: PUD
 QUAD: 49
 SE: 94-77
 ZIP CODE: 33467
 PUD NAME: SMITH DAIRY WEST

MATCH LINE
 SEE SHEET 7 OF 9

GRID