

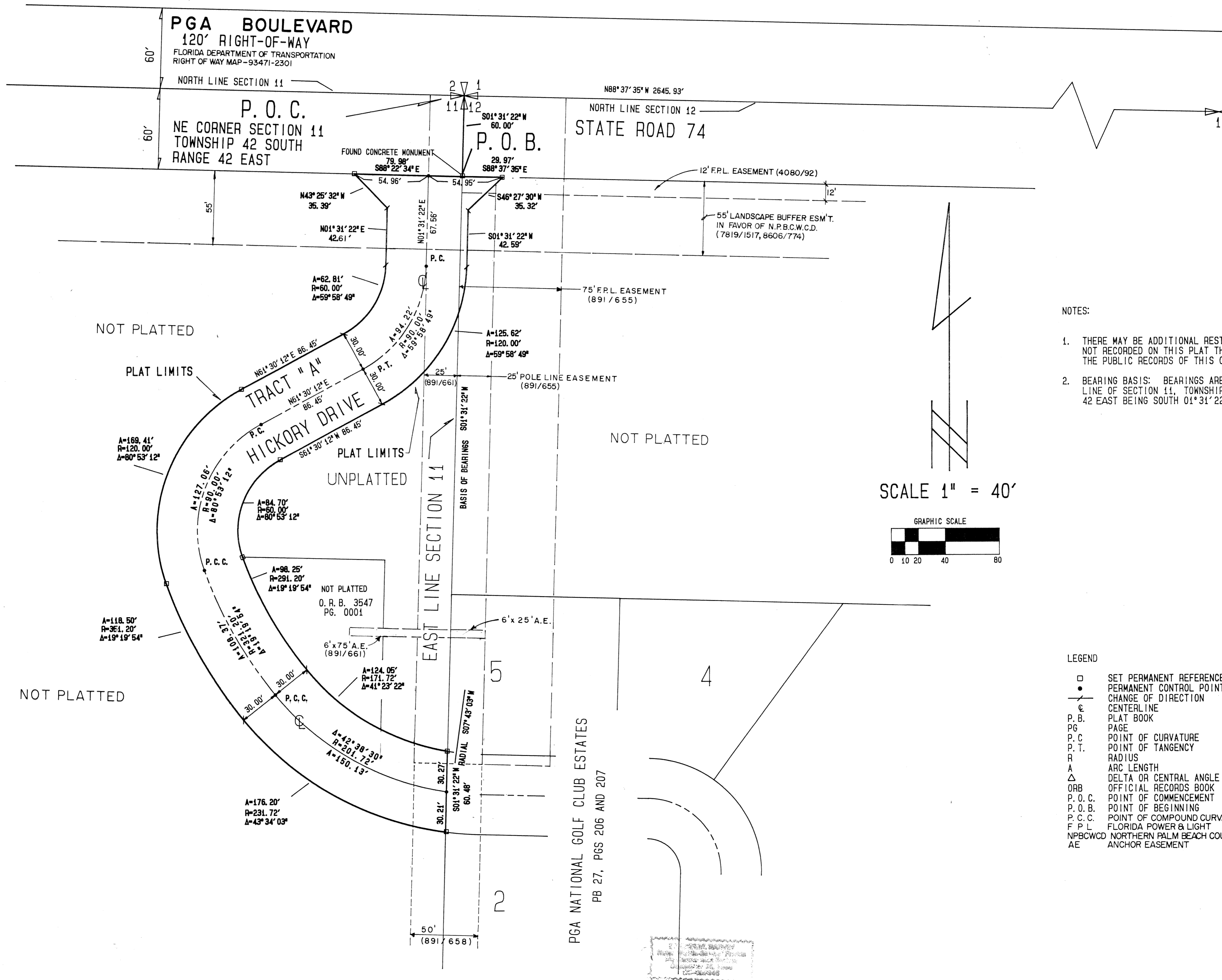
Hickory Drive

BEING A PORTION OF SECTIONS 11 and 12, TOWNSHIP 42 SOUTH, RANGE 42 EAST, PALM BEACH COUNTY, FLORIDA, CITY OF PALM BEACH GARDENS.
SHEET 2 of 2

123

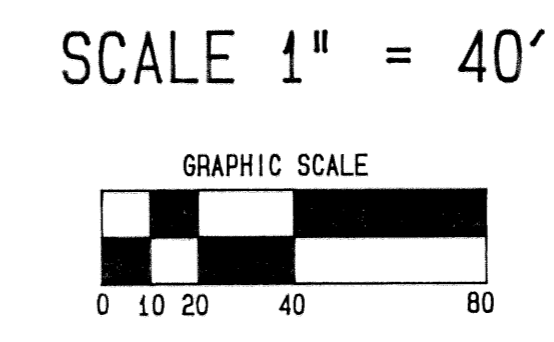
STATE OF FLORIDA }
COUNTY OF PALM BEACH } SS
THIS PLAT WAS FILED FOR
RECORD AT _____ DAY OF
_____ A.D. 1996 AND
FULLY RECORDED IN PLAT BOOK
_____ ON PAGES _____ AND

DOROTHY WILKEN, CLERK
CIRCUIT COURT.
BY: _____ DC



NOTES:

1. THERE MAY BE ADDITIONAL RESTRICTIONS THAT ARE NOT RECORDED ON THIS PLAT THAT MAY BE FOUND IN THE PUBLIC RECORDS OF THIS COUNTY.
2. BEARING BASIS: BEARINGS ARE BASED ON THE EAST LINE OF SECTION 11, TOWNSHIP 42 SOUTH, RANGE 42 EAST BEING SOUTH 01°31'22" WEST.



LEGEND

- SET PERMANENT REFERENCE MONUMENT (PRM) 4392
- PERMANENT CONTROL POINT
- CHANGE OF DIRECTION
- CENTERLINE
- P.B. PLAT BOOK
- PG PAGE
- P.C POINT OF CURVATURE
- P.T. POINT OF TANGENCY
- R RADIUS
- A ARC LENGTH
- Δ DELTA OR CENTRAL ANGLE
- ORB OFFICIAL RECORDS BOOK
- P.O.C. POINT OF COMMENCEMENT
- P.O.B. POINT OF BEGINNING
- P.C.C. POINT OF COMPOUND CURVATURE
- F.P.L. FLORIDA POWER & LIGHT
- N.P.B.C.W.C.D. NORTHERN PALM BEACH COUNTY WATER CONTROL DISTRICT
- AE ANCHOR EASEMENT

SUBDIVISION WITHDRAWN
BOOK 77
PAGE 123
FLOOD MAP *
ZONING
QUAD *
SE
PUD NAME City of Palm Beach Gardens

KESHAVARZ & ASSOCIATES, INC.
THIS INSTRUMENT WAS PREPARED BY CHARLES H. ANDERSON
IN THE OFFICES OF KESHAVARZ & ASSOCIATES, INC.
1280 N. CONGRESS AVENUE, SUITE 206
WEST PALM BEACH, FLORIDA 33409
(407) 689-8600 / FAX 689-7476