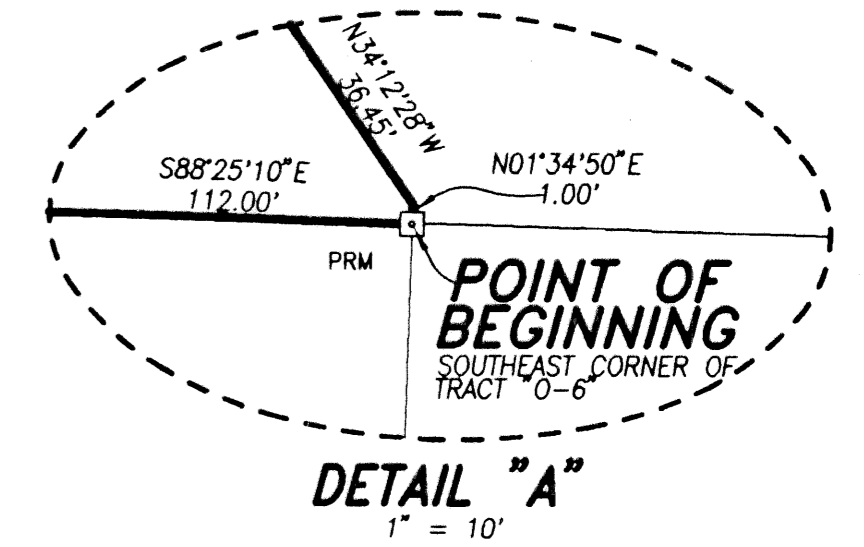
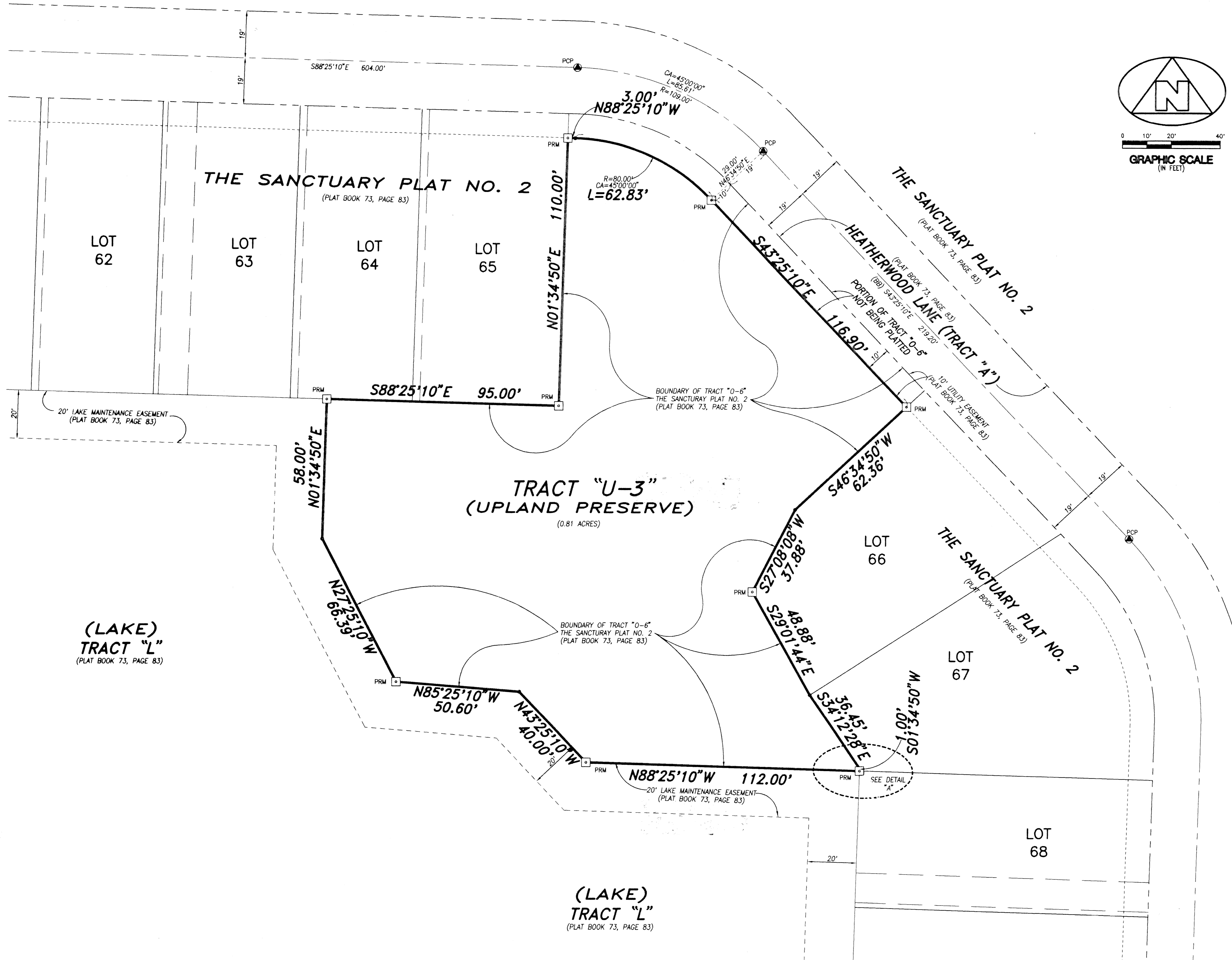
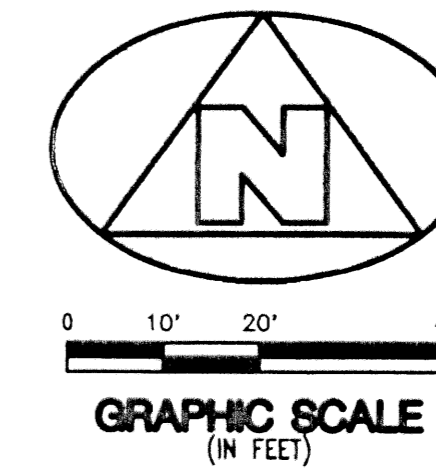


THE SANCTUARY - REPLAT OF TRACT "O-6"

BEING A REPLAT OF A PORTION OF TRACT "O-6", THE SANCTUARY PLAT NO. 2, PLAT BOOK 73, PAGE 83, AND LYING AND BEING IN SECTION 29, TOWNSHIP 41 SOUTH, RANGE 43 EAST, CITY OF PALM BEACH GARDENS, PALM BEACH COUNTY, FLORIDA.



- SURVEYOR'S NOTES AND LEGEND:
- (BB) DENOTES THE BASE BEARING FOR THIS PLAT, AS SHOWN ON THE PLAT OF THE SANCTUARY PLAT NO. 2, PLAT BOOK 73, PAGE 83, PUBLIC RECORDS, PALM BEACH COUNTY, FLORIDA.
 - IN THOSE INSTANCES WHERE UTILITY/DRAINAGE STRUCTURES ARE CONSTRUCTED IN CONFLICT WITH THE PLATTED PERMANENT CONTROL POINTS (P.C.P.) POSITION, STRADDLERS MONUMENTED AS PERMANENT CONTROL POINTS WILL BE SET TO REFERENCE THE PLATTED P.C.P. POSITION.
 - LINES WHICH INTERSECT CURVES ARE NOT RADIAL, UNLESS OTHERWISE NOTED.
 - C/L DENOTES A CENTERLINE
 - PRM DENOTES A SET #2424 PERMANENT REFERENCE MONUMENT (P.R.M.)
 - PCP DENOTES A SET #2424 PERMANENT CONTROL POINT (P.C.P.)
 - PRM DENOTES A FOUND #2424 PERMANENT REFERENCE MONUMENT (P.R.M.)
 - PCP DENOTES A FOUND #2424 PERMANENT CONTROL POINT (P.C.P.)

SUBDIVISION # THE SANCTUARY
 BOOK 77 PAGE 118 FLOOD MAP #
 FLOOD ZONE ZONING
 QUAD # ZIP CODE
 SE
 PID NAME City of Palm Beach Gardens

(LAKE)
TRACT "L"
(PLAT BOOK 73, PAGE 83)

TRACT "U-3"
(UPLAND PRESERVE)
(0.81 ACRES)

(LAKE)
TRACT "L"
(PLAT BOOK 73, PAGE 83)

THIS INSTRUMENT WAS PREPARED BY WM. R. VAN CAMPEN, R.L.S., IN AND FOR THE OFFICES OF BENCH MARK LAND SURVEYING & MAPPING, INC., 4152 WEST BLUE HERON BOULEVARD, SUITE 121, RIVIERA BEACH, FLORIDA

BENCH MARK
Land Surveying and Mapping, Inc.
4152 West Blue Heron Blvd, Suite 121, Riviera Beach, FL 33404
Fax (407) 844-9659 Phone (407) 848-2102

RECORD PLAT
THE SANCTUARY
REPLAT OF TRACT "O-6"

DWN	S.E.G.	FB	DATE 5/20/1996	WO # P146
CKD	FILE	P146-06	SCALE 1" = 20'	SHEET 2 OF 2