

LAKE RIDGE FALLS

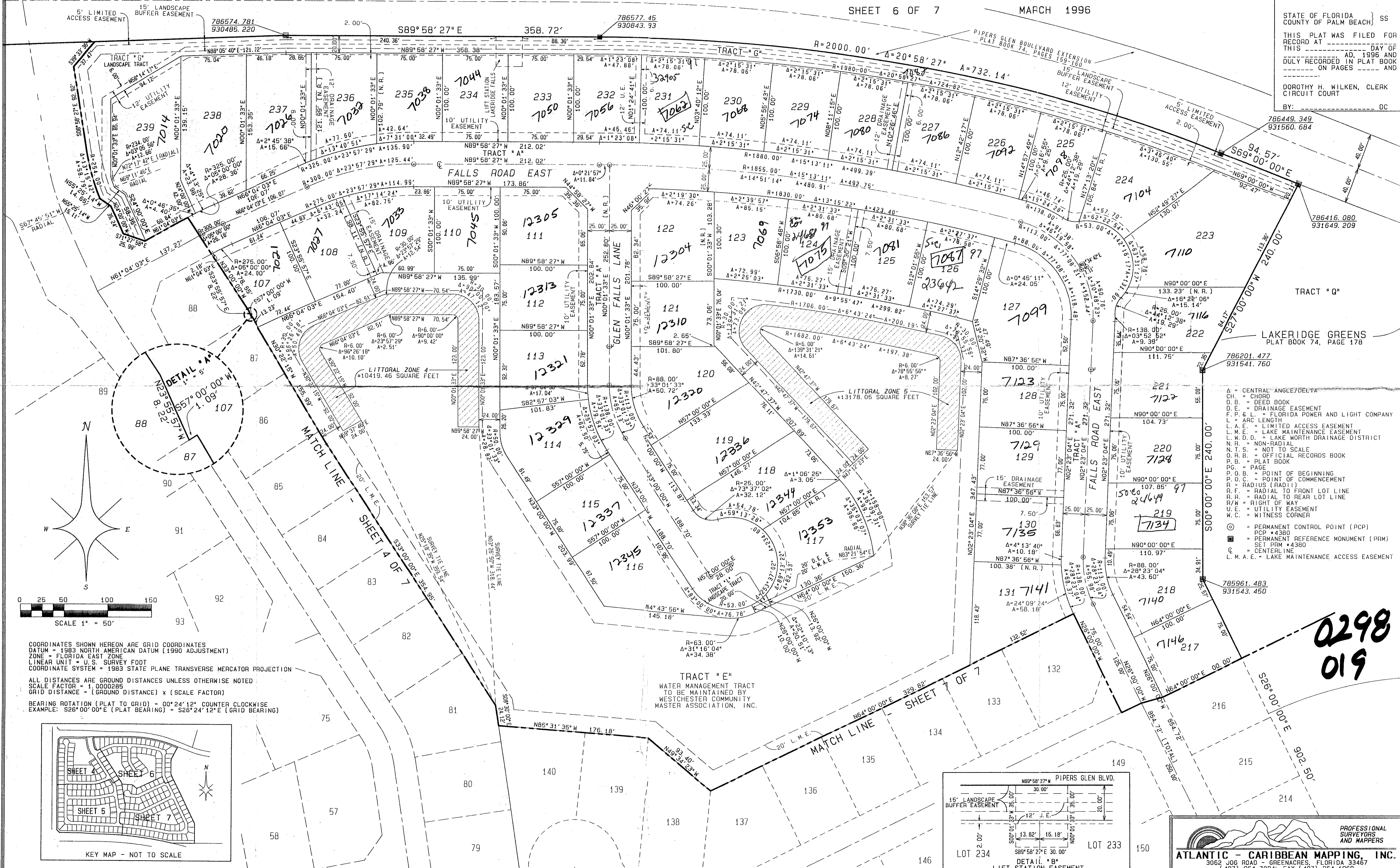
107

AT PIPER'S GLEN P.U.D. - A PORTION OF POD "G", AND POD "I"
SITUATE IN SECTION 4, TOWNSHIP 46 SOUTH, RANGE 42 EAST, PALM BEACH COUNTY,
FLORIDA, ALSO BEING A REPLAT OF A PORTION OF TRACTS 25, 26, 27, 28, 29, 30, 31,
34, 35, 36, 37, 38, 39, 40, 57, 58, 59, 60, 61, 62 AND 63, BLOCK 64 OF THE PALM
BEACH FARMS COMPANY PLAT NO. 3, AS RECORDED IN PLAT BOOK 2 PAGES 45 THROUGH 54,
INCLUSIVE AND A PORTION OF THAT RIGHT OF WAY ABANDONED ACCORDING TO OFFICIAL
RECORD BOOK 3566, PAGE 1727, OF THE PUBLIC RECORDS OF PALM BEACH COUNTY, FLORIDA

PIPERS GLEN BOULEVARD

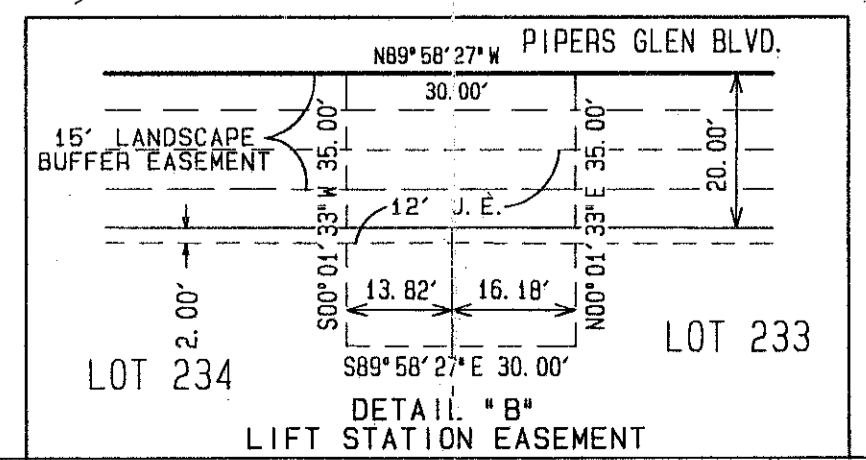
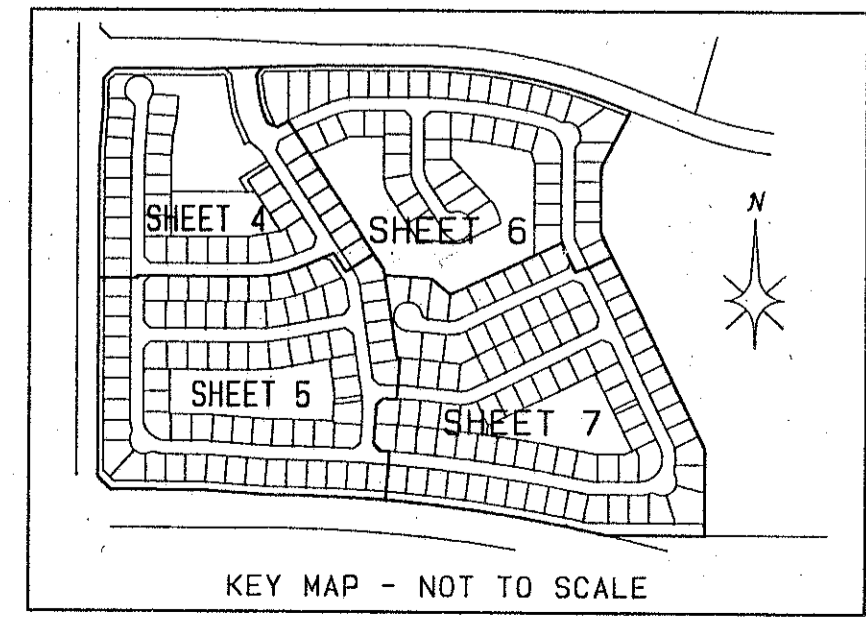
SHEET 6 OF 7 MARCH 1996

STATE OF FLORIDA } SS
COUNTY OF PALM BEACH }
THIS PLAT WAS FILED FOR
RECORD AT _____ DAY OF _____
DULY RECORDED IN PLAT BOOK _____ AND
_____ ON PAGES _____ AND
DOROTHY H. WILKEN, CLERK
CIRCUIT COURT
BY: _____ DC



SUBDIVISION LAKE RIDGE FALLS
BOOK 77 PAGE 107
FLOOD MAP # 200A
FLOOD ZONE B
QUAD # 51
FLOOD ZONING RT
SE 80-212 ZIP CODE 33446
PUD NAME PIPERS GLEN PUD # 77

COORDINATES SHOWN HEREON ARE GRID COORDINATES
DATUM = 1983 NORTH AMERICAN DATUM (1990 ADJUSTMENT)
ZONE = FLORIDA EAST ZONE
LINEAR UNIT = U.S. SURVEY FOOT
COORDINATE SYSTEM = 1983 STATE PLANE TRANSVERSE MERCATOR PROJECTION
ALL DISTANCES ARE GROUND DISTANCES UNLESS OTHERWISE NOTED
SCALE FACTOR = 1.0000285
GRID DISTANCE = (GROUND DISTANCE) x (SCALE FACTOR)
BEARING ROTATION (PLAT TO GRID) = 00°24'12" COUNTER CLOCKWISE
EXAMPLE: S26°00'00"E (PLAT BEARING) = S26°24'12"E (GRID BEARING)



ATLANTIC - CARIBBEAN MAPPING, INC.
3062 JOE ROAD GREENACRES, FLORIDA 33467
(407) 964-7884; FAX (407) 964-1989
PROFESSIONAL SURVEYORS AND MAPPERS

0298
019