

LAKERIDGE FALLS

AT PIPER'S GLEN P.U.D. - A PORTION OF POD "G", AND POD "I"
 SITUATE IN SECTION 4, TOWNSHIP 46 SOUTH, RANGE 42 EAST, PALM BEACH COUNTY,
 FLORIDA, ALSO BEING A REPLAT OF A PORTION OF TRACTS 25, 26, 27, 28, 29, 30, 31,
 34, 35, 36, 37, 38, 39, 40, 57, 58, 59, 60, 61, 62 AND 63, BLOCK 64 OF THE PALM
 BEACH FARMS COMPANY PLAT NO. 3, AS RECORDED IN PLAT BOOK 2 PAGES 45 THROUGH 54,
 INCLUSIVE AND A PORTION OF THAT RIGHT OF WAY ABANDONED ACCORDING TO OFFICIAL
 RECORD BOOK 3566, PAGE 1727, OF THE PUBLIC RECORDS OF PALM BEACH COUNTY, FLORIDA

0298-019

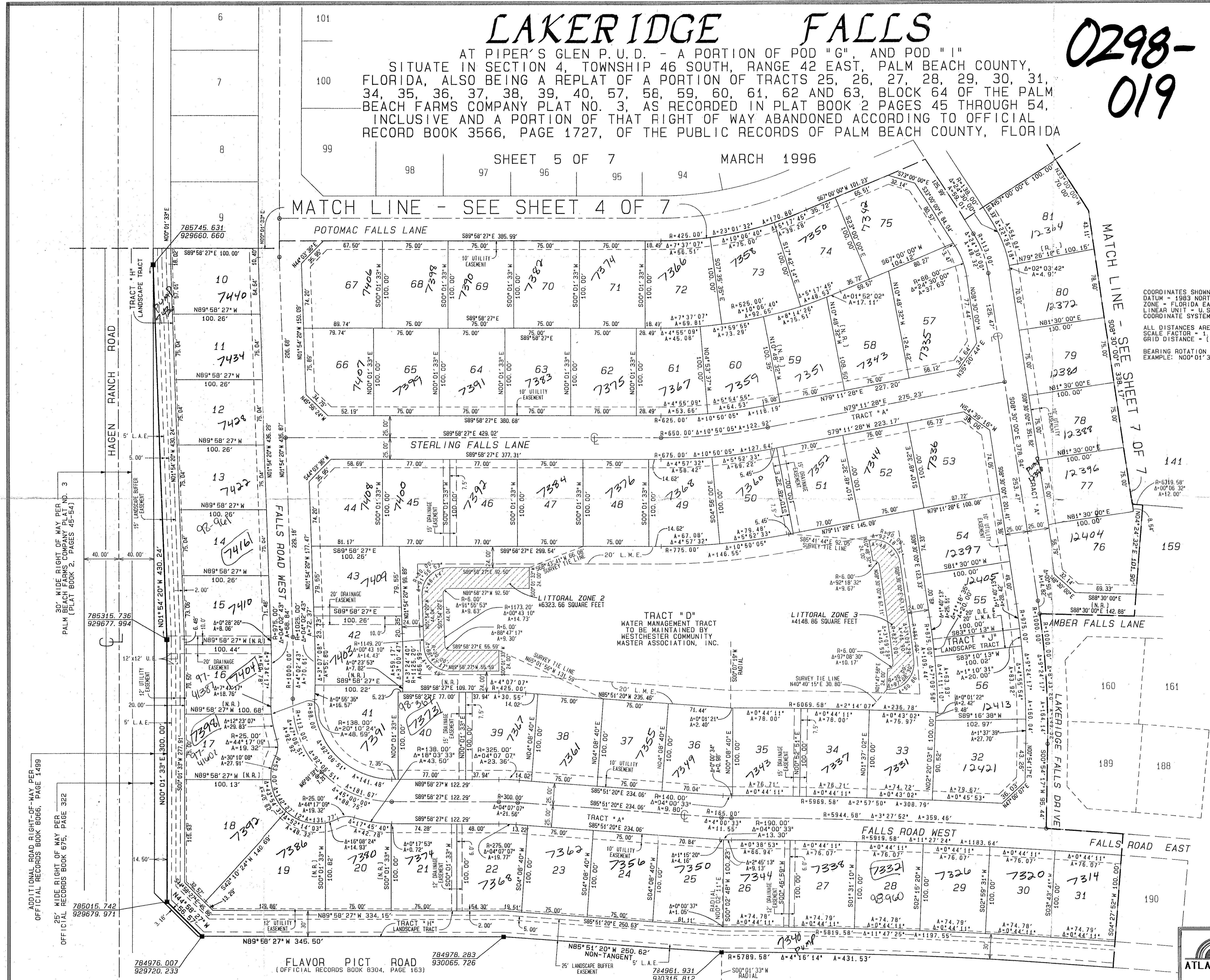
106

SHEET 5 OF 7 MARCH 1996

MATCH LINE - SEE SHEET 4 OF 7

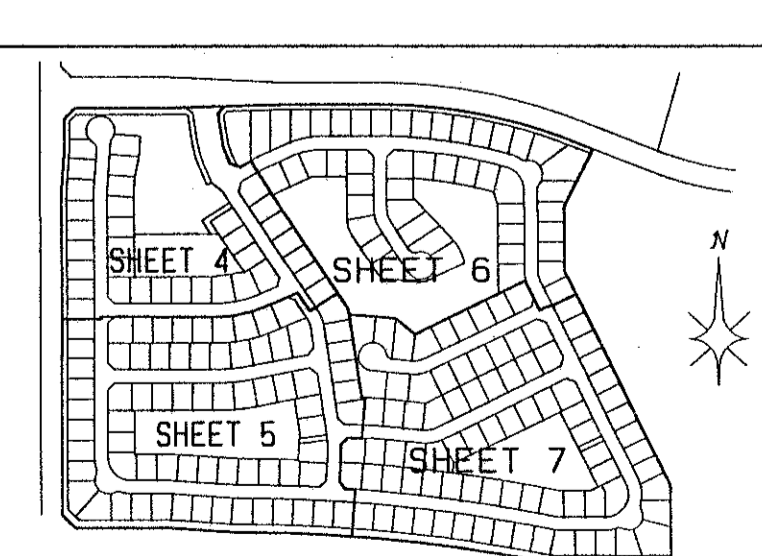
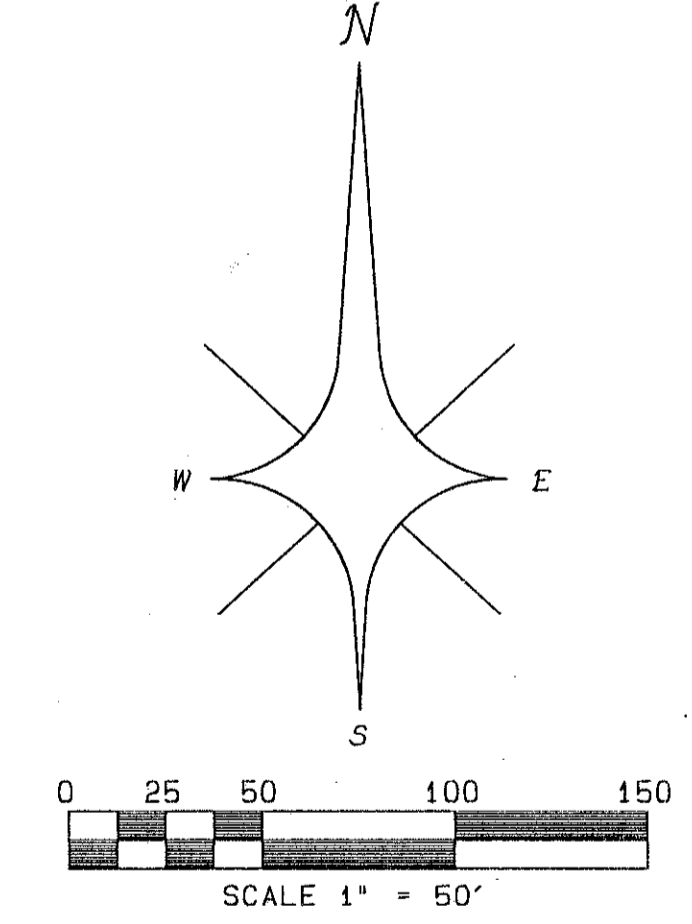
MATCH LINE - SEE SHEET 7 OF 7

SUBDIVISION - LAKERIDGE FALLS
 BOOK 77 PAGE 106
 FLOOD ZONE B FLOOD MAP #200A
 QUAD # 51 ZONING RT
 SE 80-212 ZIP CODE 33446
 PUD NAME PIPER'S GLEN PODS G+I



COORDINATES SHOWN HEREON ARE GRID COORDINATES
 DATUM = 1983 NORTH AMERICAN DATUM (1990 ADJUSTMENT)
 ZONE = FLORIDA EAST ZONE
 LINEAR UNIT = U.S. SURVEY FOOT
 COORDINATE SYSTEM = 1983 STATE PLANE TRANSVERSE MERCATOR PROJECTION
 ALL DISTANCES ARE GROUND DISTANCES UNLESS OTHERWISE NOTED
 SCALE FACTOR = 1.000285
 GRID DISTANCE = (GROUND DISTANCE) x (SCALE FACTOR)
 BEARING ROTATION (PLAT TO GRID) = 00°24'12" COUNTER CLOCKWISE
 EXAMPLE: N00°01'33"E (PLAT BEARING) = 00°24'39"W (GRID BEARING)

- LEGEND:
- Δ = CENTRAL ANGLE/DELTA
 - CH = CHORD
 - D.B. = DEED BOOK
 - D.E. = DRAINAGE EASEMENT
 - F.P. & L. = FLORIDA POWER AND LIGHT COMPANY
 - L = ARC LENGTH
 - L.A.E. = LIMITED ACCESS EASEMENT
 - L.M.A.E. = LAKE MAINTENANCE EASEMENT
 - L.W.D. = LAKE WORTH DRAINAGE DISTRICT
 - N.R. = NON-RADIAL
 - N.T.S. = NOT TO SCALE
 - O.R.B. = OFFICIAL RECORDS BOOK
 - P.B. = PLAT BOOK
 - PG. = PAGE
 - P.O.B. = POINT OF BEGINNING
 - P.O.C. = POINT OF COMMENCEMENT
 - R = RADIUS (RADII)
 - R.F. = RADIAL TO FRONT LOT LINE
 - R.R. = RADIAL TO REAR LOT LINE
 - R.O.W. = RIGHT OF WAY
 - U.E. = UTILITY EASEMENT
 - W.C. = WITNESS CORNER
 - ⊙ = PERMANENT CONTROL POINT (PCP)
 - PCP #4380
 - = PERMANENT REFERENCE MONUMENT (PRM)
 - SET PRM #4380
 - = CENTERLINE
 - L.M.A.E. = LAKE MAINTENANCE ACCESS EASEMENT



PROFESSIONAL SURVEYORS AND MAPPERS
ATLANTIC - CARIBBEAN MAPPING, INC.
 3062 JOG ROAD - GREENACRES, FLORIDA 33467
 (407) 964-7884; FAX (407) 964-1969

ADDITIONAL ROAD RIGHT-OF-WAY PER OFFICIAL RECORDS BOOK 8066, PAGE 1499

35' WIDE RIGHT OF WAY PER OFFICIAL RECORDS BOOK 675

785015.742 929679.971

785315.736 929677.994

785745.631 929660.660

784976.007 929720.233

784978.283 930065.726

784961.931 930315.812

785789.58 4-16-14 A=431.53

785015.742 929679.971

785315.736 929677.994

785745.631 929660.660

784976.007 929720.233

784978.283 930065.726

784961.931 930315.812

785789.58 4-16-14 A=431.53

785015.742 929679.971

785315.736 929677.994

785745.631 929660.660

784976.007 929720.233

784978.283 930065.726

784961.931 930315.812

785789.58 4-16-14 A=431.53

785015.742 929679.971

785315.736 929677.994

785745.631 929660.660

784976.007 929720.233

784978.283 930065.726

784961.931 930315.812

785789.58 4-16-14 A=431.53

785015.742 929679.971

785315.736 929677.994

785745.631 929660.660

784976.007 929720.233

784978.283 930065.726

784961.931 930315.812

785789.58 4-16-14 A=431.53