

MARCH 1996

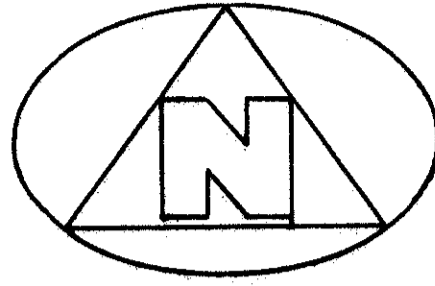
POLO TRACE II PLAT NO. 2

SHEET 2 of 2

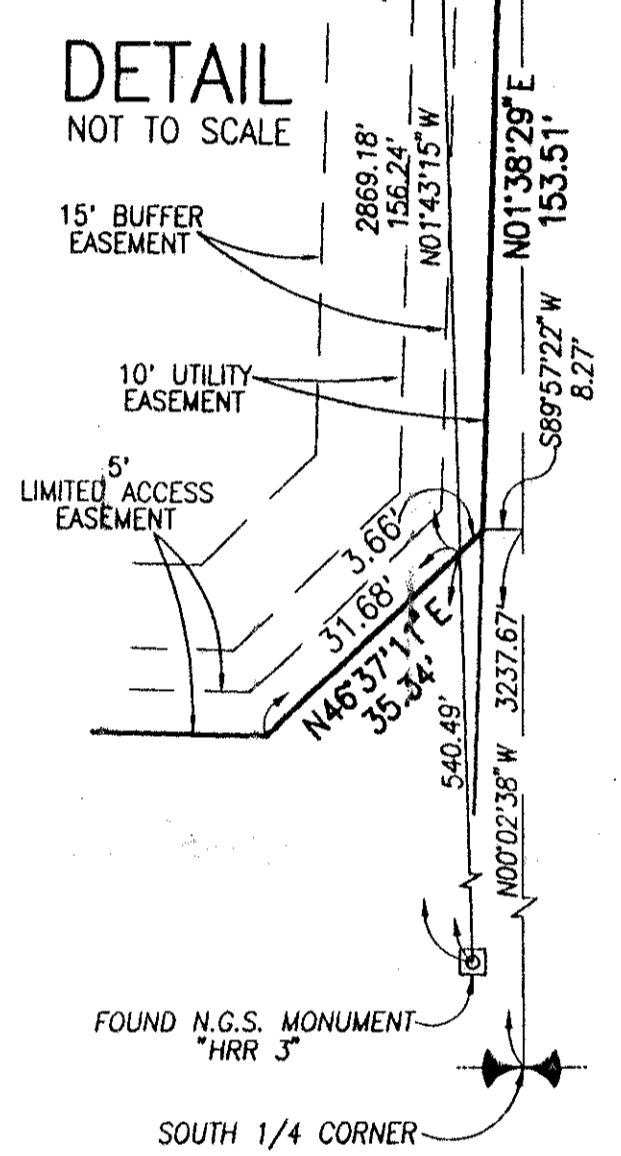
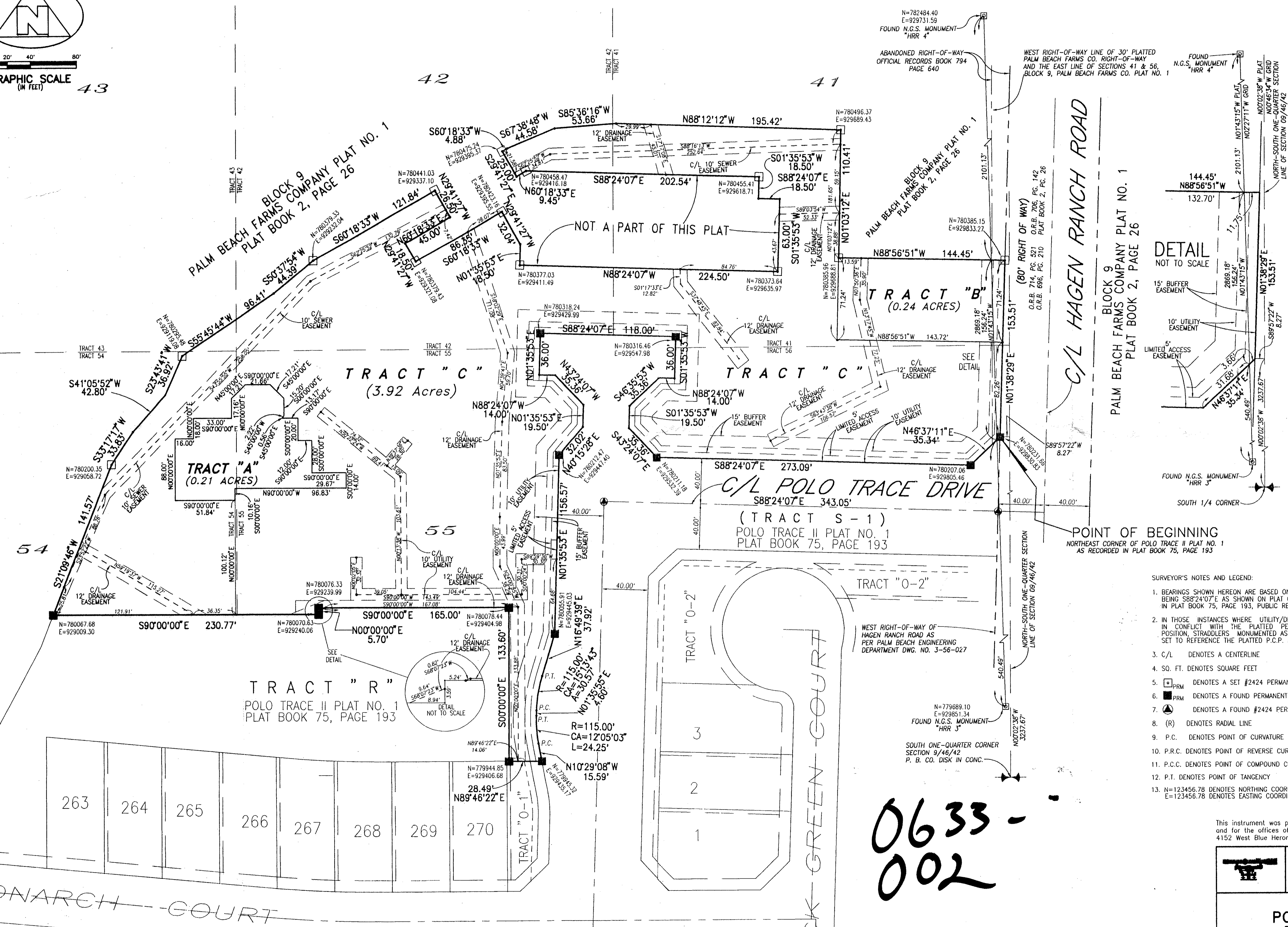
0633-002

77

(A PART OF POLO TRACE P.U.D.)
BEING A REPLAT OF PORTIONS OF PALM BEACH FARMS COMPANY PLAT NO. 1, PLAT BOOK 2, PAGE 26, AND LYING IN SECTION 9, TOWNSHIP 46 SOUTH, RANGE 42 EAST, PALM BEACH COUNTY, FLORIDA



0 20' 40' 80'
GRAPHIC SCALE
(IN FEET) 43



- SURVEYOR'S NOTES AND LEGEND:
- BEARINGS SHOWN HEREON ARE BASED ON THE CENTERLINE OF POLO TRACE DRIVE AS BEING S88°24'07"E AS SHOWN ON PLAT OF POLO TRACE II PLAT NO. 1 AS RECORDED IN PLAT BOOK 75, PAGE 193, PUBLIC RECORDS, PALM BEACH COUNTY, FLORIDA.
 - IN THOSE INSTANCES WHERE UTILITY/DRAINAGE STRUCTURES ARE CONSTRUCTED IN CONFLICT WITH THE PLATTED PERMANENT CONTROL POINTS (P.C.P.) POSITION, STRADDLERS MONUMENTED AS PERMANENT CONTROL POINTS WILL BE SET TO REFERENCE THE PLATTED P.C.P. POSITION.
 - C/L DENOTES A CENTERLINE
 - SO. FT. DENOTES SQUARE FEET
 - PRM DENOTES A SET #2424 PERMANENT REFERENCE MONUMENT (P.R.M.)
 - PRM DENOTES A FOUND PERMANENT REFERENCE MONUMENT (P.R.M.)
 - PCP DENOTES A FOUND #2424 PERMANENT CONTROL POINT (P.C.P.)
 - (R) DENOTES RADIAL LINE
 - P.C. DENOTES POINT OF CURVATURE
 - P.R.C. DENOTES POINT OF REVERSE CURVATURE
 - P.C.C. DENOTES POINT OF COMPOUND CURVATURE
 - P.T. DENOTES POINT OF TANGENCY
 - N=123456.78 DENOTES NORTHING COORDINATE
E=123456.78 DENOTES EASTING COORDINATE

0633-002

SUBDIVISION * Polo Trace
BOOK 77 PAGE 77
FLOOD ZONE 0
QUAD * 51
SE
ZIP CODE 33447
RIP NAME Polo Trace

This instrument was prepared by Wm. R. Van Campen, R.L.S., in and for the offices of Bench Mark Land Surveying & Mapping, Inc., 4152 West Blue Heron Boulevard, Suite 121, Riviera Beach, Florida.

BENCH MARK
Land Surveying and Mapping, Inc.
4152 West Blue Heron Blvd, Suite 121, Riviera Beach, FL 33404
Fax (407) 844-9559 Phone (407) 848-2102

RECORD PLAT
POLO TRACE II
PLAT NO. 2

DWN	S.E.G.	FB	DATE 20 DEC 1995	WO.# P160
CKD	FILE P160-1B2.dwg	SCALE 1" = 40'	SHEET 2 OF 2	