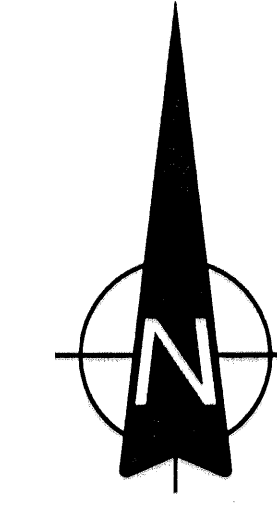


REPLAT OF LOTS 22 AND 23 PLAT OF BANYAN ISLE AT BALLENISLES

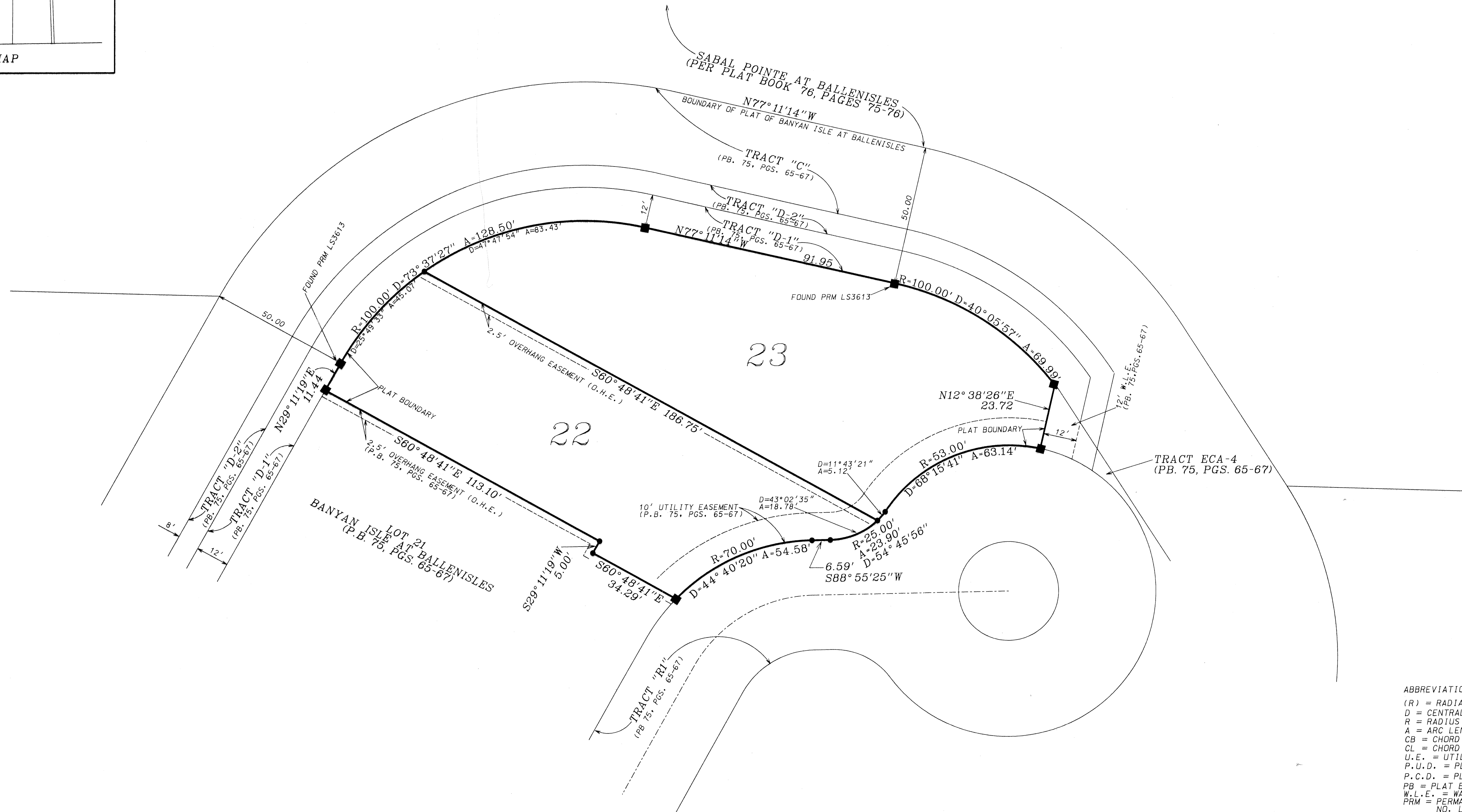
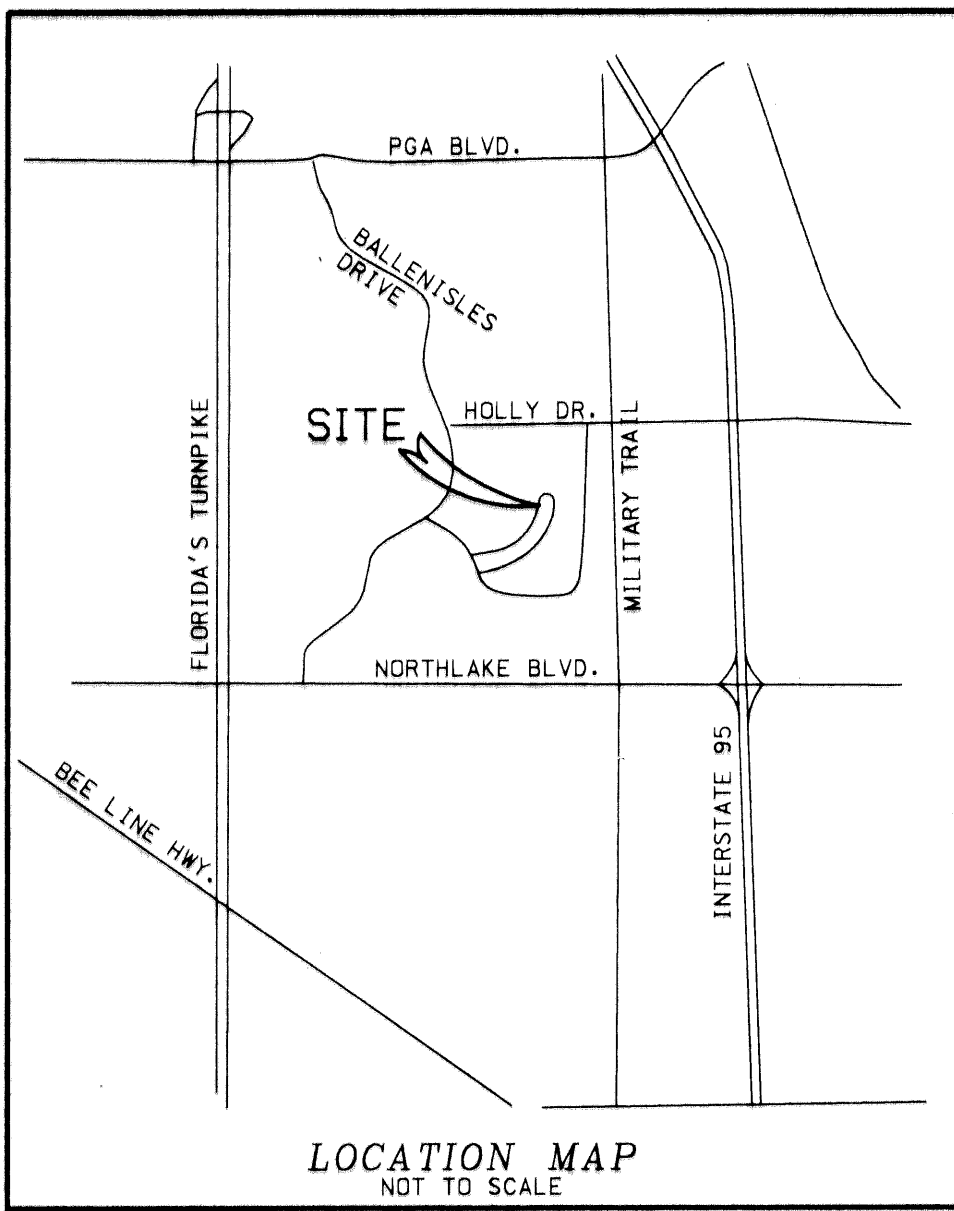
Plat Book 75, Pages 65-67, lying in Section 13,
Township 42 South, Range 42 East, City of Palm
Beach Gardens, Palm Beach County, Florida.

Sheet 2 of 2

APRIL 1996



GRAPHIC SCALE
20 10 0 20 40 FT
SCALE: 1" = 20'



ABBREVIATIONS:
(R) = RADIAL
D = CENTRAL ANGLE
R = RADIUS
A = ARC LENGTH
CB = CHORD BEARING
CL = CHORD LENGTH
U.E. = UTILITY EASEMENT
P.U.D. = PLANNED UNIT DEVELOPMENT
P.C.D. = PLANNED COMMUNITY DEVELOPMENT
PB = PLAT BOOK
W.L.E. = WATER LINE EASEMENT
PRM = PERMANENT REFERENCE MONUMENT
NO. LS3613
ECA = EXCLUSIVE COMMON AREA

TAZ 97

SUBDIVISION OF THIS PAGE 75
BOOK 77 FLOOD MAP -
QUAD - ZONING
SE - ZIP CODE -
PUD NAME City of Palm Beach Gardens

LIDBERG LAND SURVEYING, INC.
675 West Indiantown Road, Suite 200,
Jupiter, Florida 33458 407-746-8454

FLD	---	JOB	96-120	FB	---	PG.	---
OFF.	E.A.O.	DATE	2-27-96	DWG.	D96-120		
CKD.	D.C.L.	REF.	96-120(ms)	SHEET	2 OF 2		