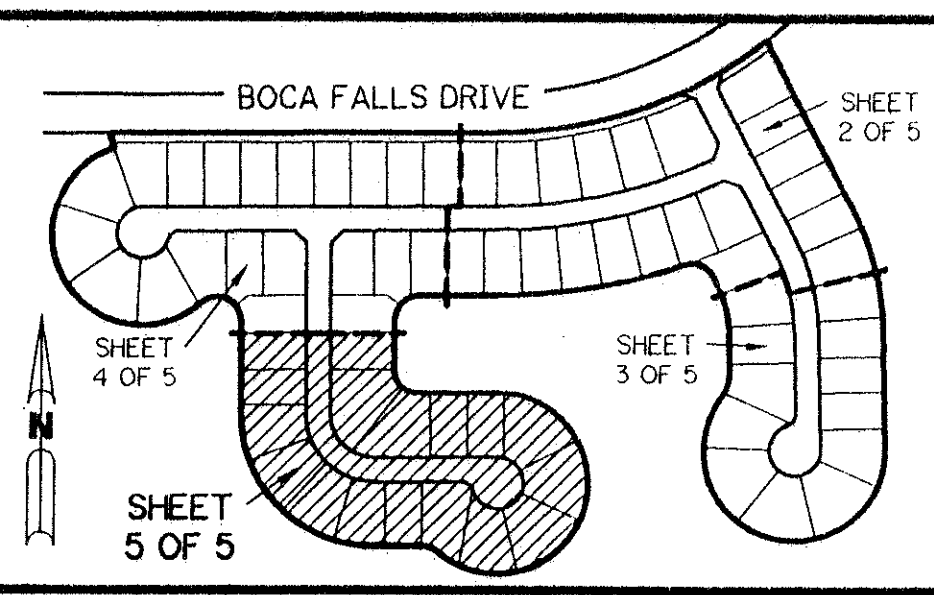


A PART OF THE BAY WINDS PLANNED UNIT DEVELOPMENT

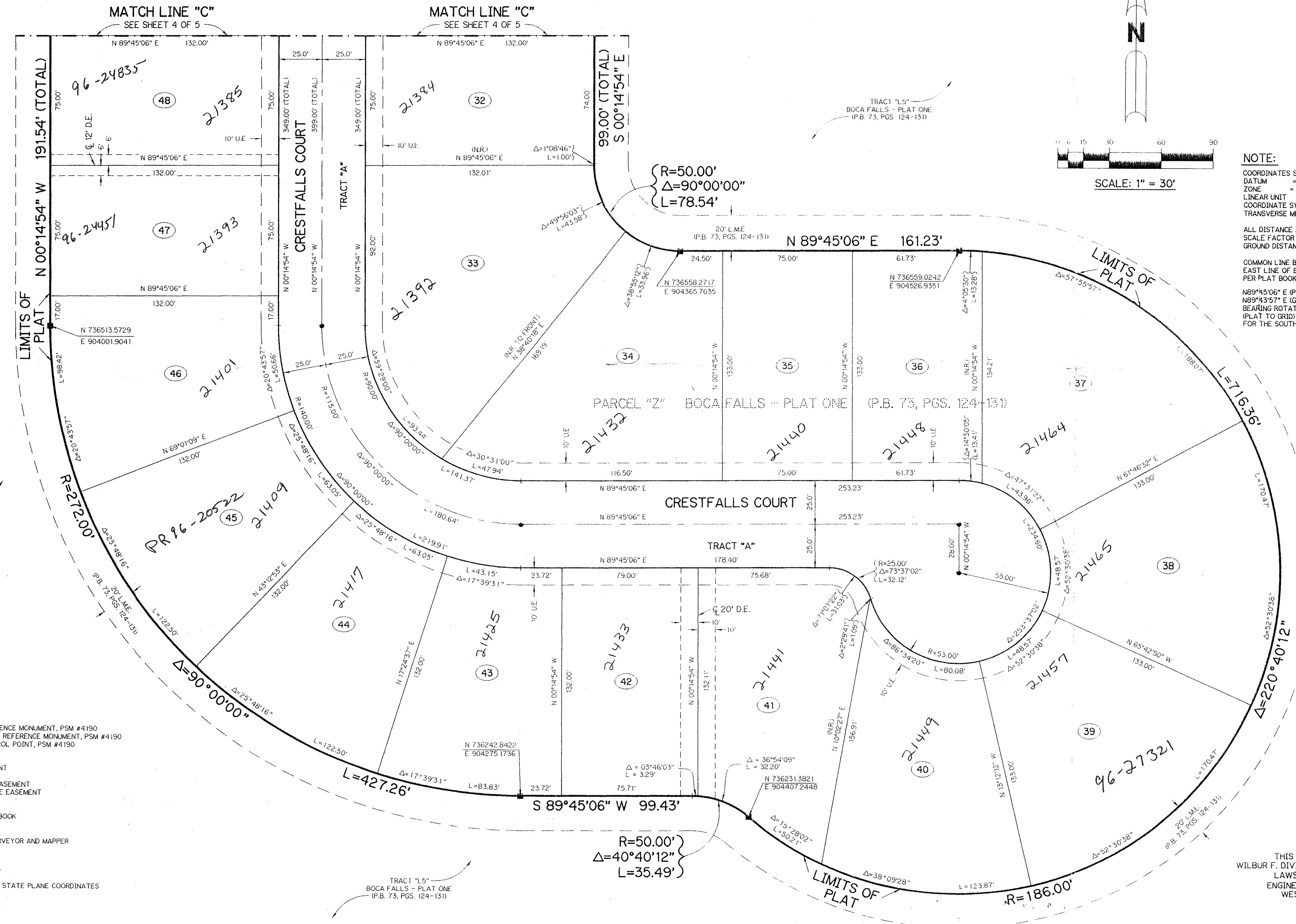
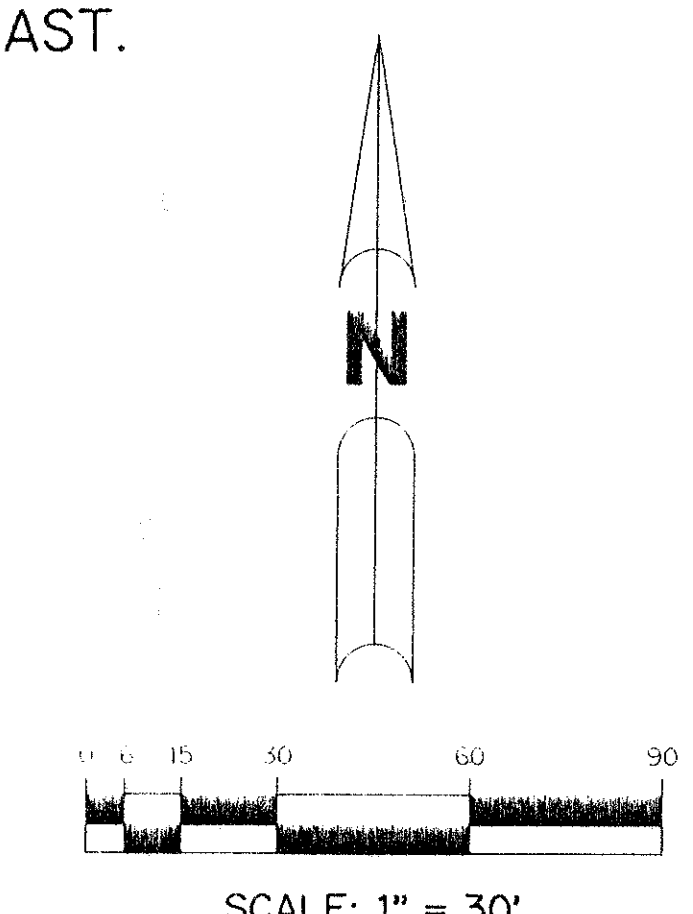
BOCA FALLS - PARCEL "Q"

BEING A REPLAT OF A PORTION OF PARCEL "Z" ACCORDING TO THE PLAT OF BOCA FALLS - PLAT ONE AS RECORDED IN PLAT BOOK 73, PAGES 124 THROUGH 131, INCLUSIVE, AND ALL OF TRACT "OS3" ACCORDING TO THE PLAT OF BOCA FALLS DRIVE, NORTH HALF OF BOCA FALLS DRIVE AS RECORDED IN PLAT BOOK 16, PAGES 105 THROUGH 107, INCLUSIVE, BOTH OF THE PUBLIC RECORDS OF PALM BEACH COUNTY, FLORIDA. LYING IN SECTION 22, TOWNSHIP 47 SOUTH, RANGE 41 EAST.

SHEET 5 OF 5 JANUARY, 1996



KEY MAP
N.T.S.



NOTE:
COORDINATES SHOWN ARE GRID
DATUM = NAD 83 1990 ADJUSTMENT
ZONE = FLORIDA EAST
LINEAR UNIT = US SURVEY FEET
COORDINATE SYSTEM 1983 STATE PLANE
TRANSVERSE MERCATOR PROJECTION

ALL DISTANCE ARE GROUND
SCALE FACTOR = 1.0000113
GROUND DISTANCE X SCALE FACTOR = GRID DISTANCE

COMMON LINE BETWEEN EXISTING PLAT AND REPLAT
EAST LINE OF BOCA FALLS PARCEL "Q"
PER PLAT BOOK 73 PAGE 124-131

N89°45'06" E (PLAT BEARING) -00°0'109"=
N89°43'57" E (GRID BEARING)
BEARING ROTATION-COUNTERCLOCKWISE
(PLAT TO GRID)
FOR THE SOUTH LINE OF BOCA FALLS DRIVE

201-024

SUBDIVISION Boca Falls
BOOK 71 PAGE 71
FLOOD ZONE AU FLOOD MAR #1008
QUAD 69 ZONING RT ZIP CODE 33428
SE 50-47
PUD NAME Boca Falls

- LEGEND:**
- - PERMANENT REFERENCE MONUMENT, PSM #4190
 - - FOUND PERMANENT REFERENCE MONUMENT, PSM #4190
 - - PERMANENT CONTROL POINT, PSM #4190
 - Δ - DELTA ANGLE
 - B.E. - BUFFER EASEMENT
 - D.E. - DRAINAGE EASEMENT
 - L - ARC LENGTH
 - L.A.E. - LIMITED ACCESS EASEMENT
 - L.M.E. - LAKE MAINTENANCE EASEMENT
 - NR - NOT RADIAL
 - N.T.S. - NOT TO SCALE
 - ORB. - OFFICIAL RECORD BOOK
 - P.B. - PLAT BOOK
 - PGS. - PAGES
 - P.S.M. - PROFESSIONAL SURVEYOR AND MAPPER
 - R - RADIUS
 - R/W - RIGHT-OF-WAY
 - S.T. - SURVEY TIE
 - U.E. - UTILITY EASEMENT
 - N 737648.0171 E 905258.2326 - DENOTES STATE PLANE COORDINATES

THIS INSTRUMENT PREPARED BY
WILBUR F. DIVINE, P.S.M. 4190, STATE OF FLORIDA
LAWSON, NOBLE AND WEBB, INC.
ENGINEERS PLANNERS SURVEYORS
WEST PALM BEACH, FLORIDA