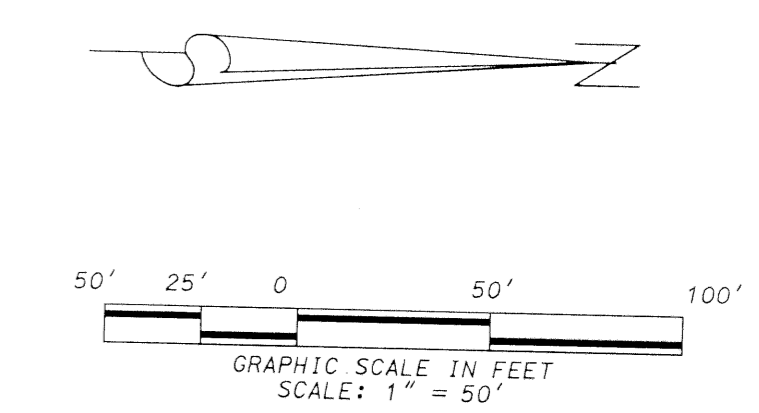


REPLAT OF LAKESIDE AT CENTRE' DELRAY

BEING A REPLAT OF A PORTION OF THE LAKESIDE AT CENTRE' DELRAY, AS RECORDED IN PLAT BOOK 50, PAGE 195 LOCATED IN SECTION 30, TOWNSHIP 46 SOUTH, RANGE 43 EAST CITY OF DELRAY BEACH, PALM BEACH COUNTY, FLORIDA
MARCH 1996
SHEET 2 OF 2

MATCH LINE SEE THIS SHEET



THE TERRACES AT CENTRE' DELRAY
PLAT BOOK 45, PAGE 49
(PROPOSED REPLAT OF THE TERRACES AT CENTRE' DELRAY)

THE ARBORS AT CENTRE' DELRAY
PLAT BOOK 43, PAGE 166

POINT OF BEGINNING
SET P.R.M. LS 3613

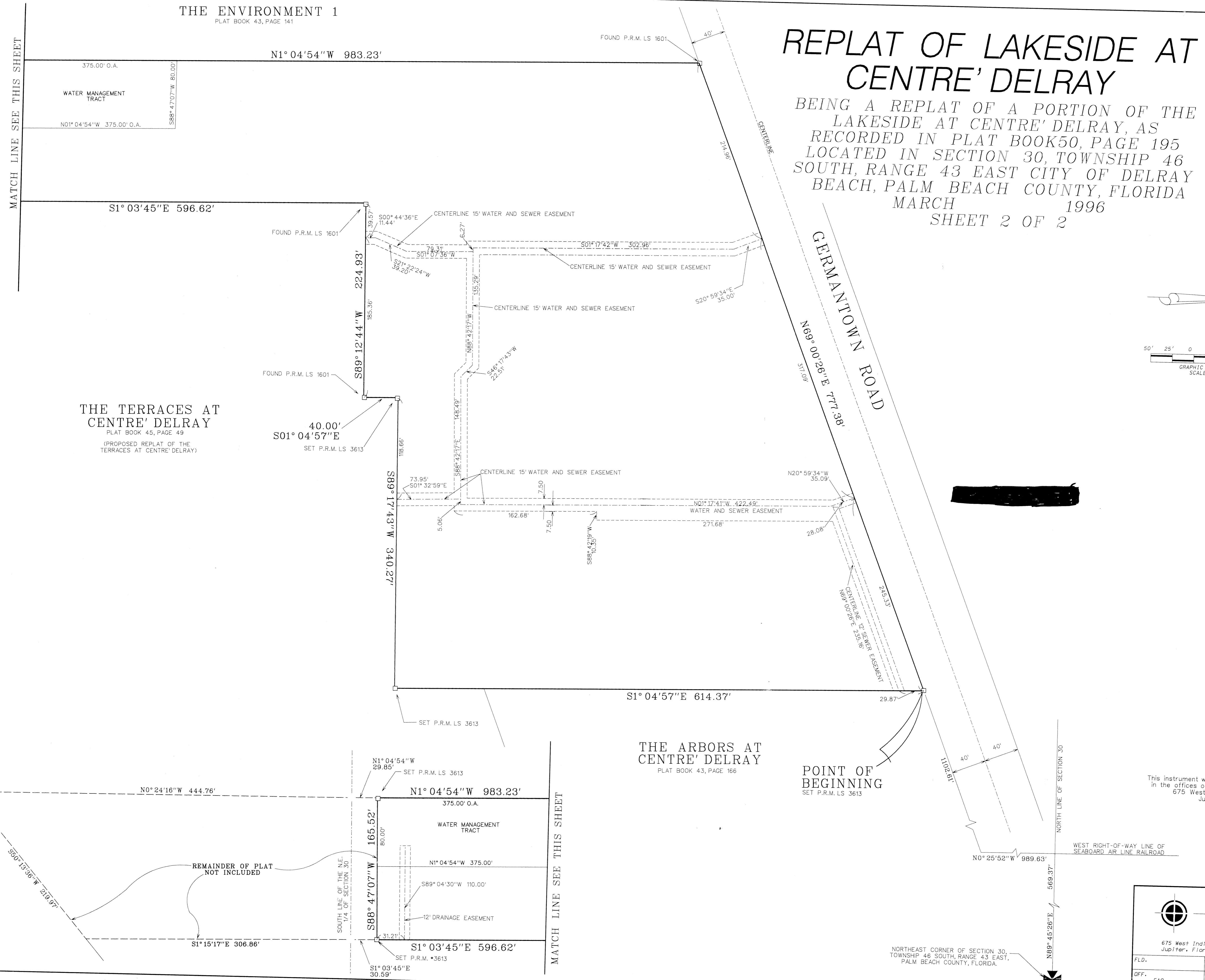
This instrument was prepared by David C. Lidberg in the offices of Lidberg Land Surveying, Inc. 675 West Indiantown Road, Suite 200 Jupiter, Florida 33458 (407) 746-8454

LIDBERG LAND SURVEYING INC.

675 West Indiantown Road, Suite 200, Jupiter, Florida 33458 TEL. 407-746-8454

FLD.	JOB 95-771	FB. PG.
OFF. EAO	DATE 3-11-96	DWG. D95-771
CKD.		

SUBDIVISION # LAKESIDE AT CENTRE' DELRAY
BOOK 77
FLOOD ZONE
QUAD #
SE
ZIP CODE
PUD NAME CITY OF DELRAY
TAX 590



NORTHEAST CORNER OF SECTION 30, TOWNSHIP 46 SOUTH, RANGE 43 EAST, PALM BEACH COUNTY, FLORIDA.