

WINSTON TRAILS PARCEL TEN

PART OF WINSTON TRAILS P. U. D.
SITUATE IN SECTION 2, TOWNSHIP 45
SOUTH, RANGE 42 EAST
PALM BEACH COUNTY, FLORIDA

NOVEMBER, 1994

SHEET 4 OF 5

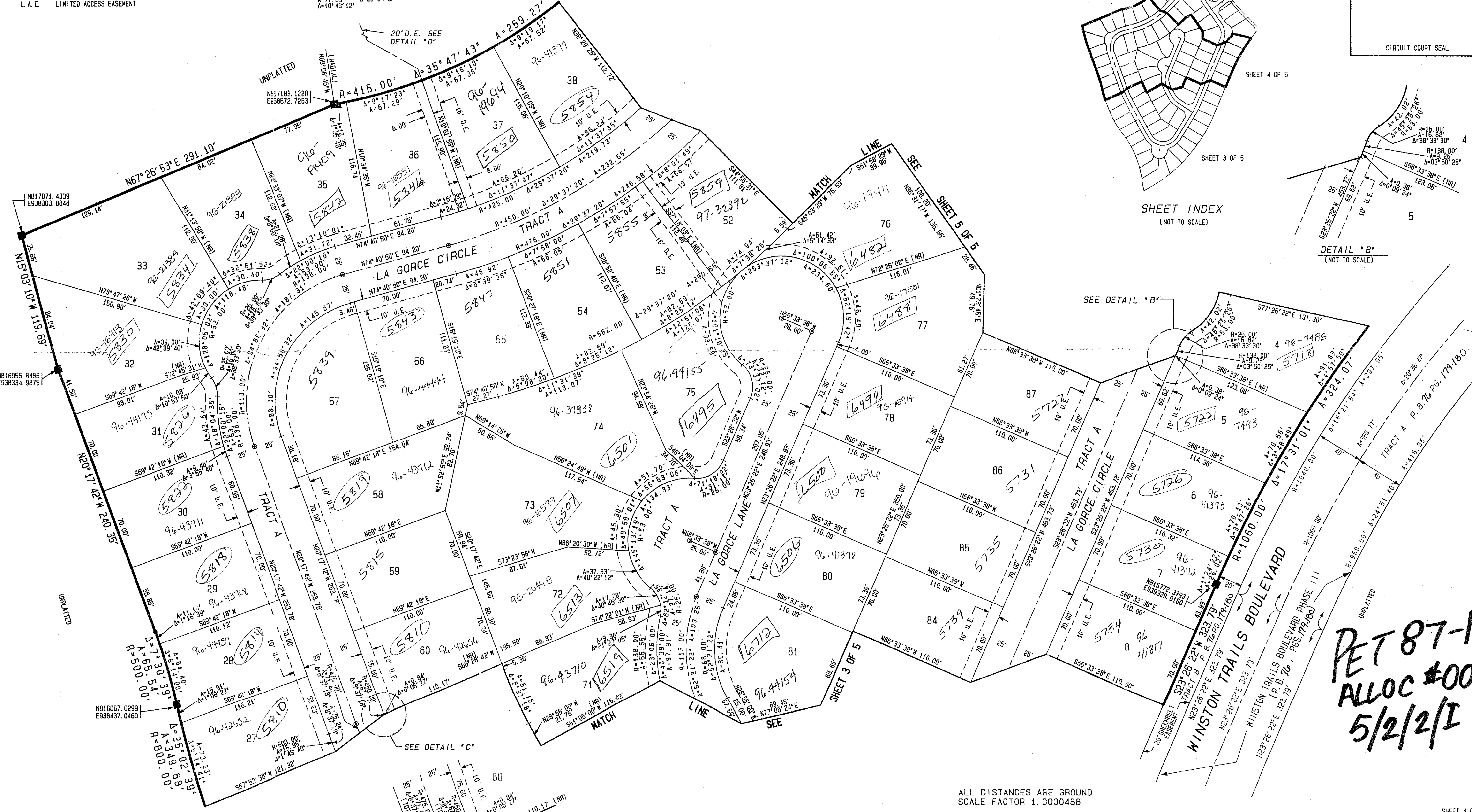
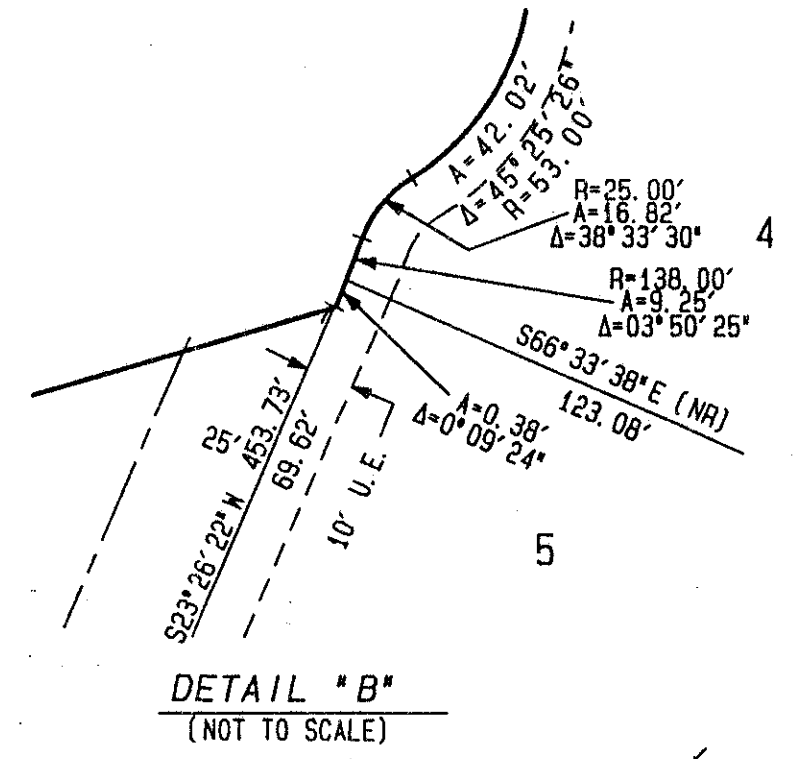
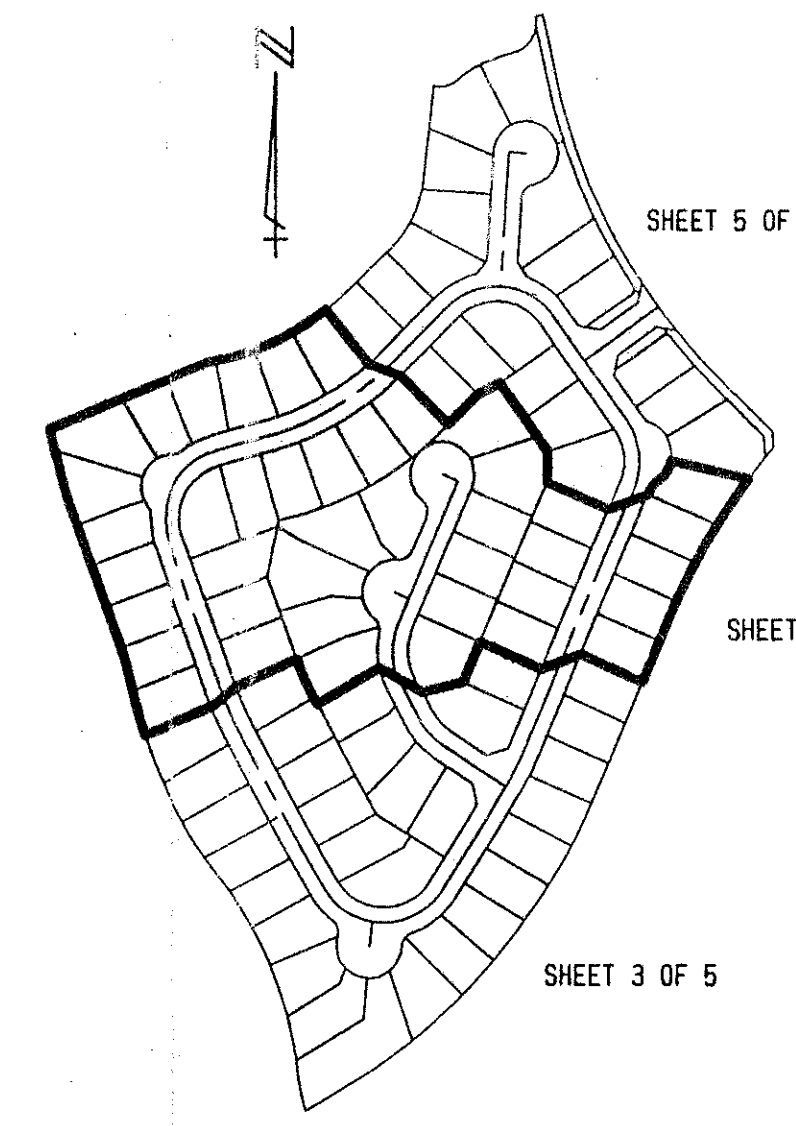
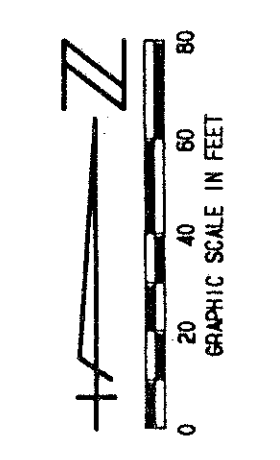
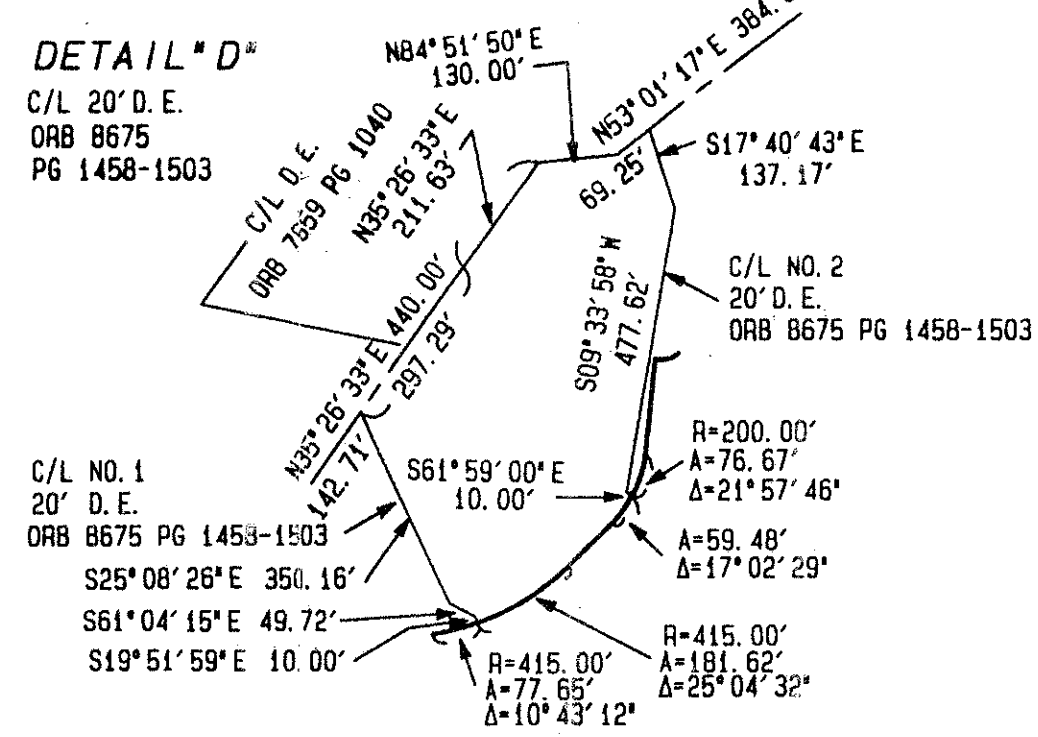
0587-013

191

STATE OF FLORIDA
COUNTY OF PALM BEACH
THIS PLAT WAS FILED FOR
RECORD _____ DAY OF _____
AD, 1995 AND DULY RECORDED
IN PLAT BOOK _____ ON PAGES
_____ AND _____
DOROTHY H. WILKEN, CLERK
BY: _____, D. C.

CIRCUIT COURT SEAL

- LEGEND:**
- L. M. D. D. LAKE WORTH DRAINAGE DISTRICT
 - FPL FLORIDA POWER & LIGHT
 - ORB OFFICIAL RECORD BOOK
 - PBCD PALM BEACH COUNTY
 - P. B. PLAT BOOK
 - PP. PAGES
 - PG. PAGE
 - U. E. UTILITY EASEMENT
 - D. E. DRAINAGE EASEMENT
 - A. E. ACCESS EASEMENT AND MAINTENANCE EASEMENT
 - TOWNSHIP
 - RANGE
 - NO. RADIAL CENTERLINE
 - RGE (NR) PERMANENT CONTROL POINT
 - PERMANENT REFERENCE MONUMENT
 - SET PLS # 4783
 - L. A. E. LIMITED ACCESS EASEMENT



ALL DISTANCES ARE GROUND
SCALE FACTOR 1.0000488

**PET 87-112C
ALOC #0001
5/2/2/I**

0587-013

THIS INSTRUMENT WAS PREPARED BY MARY HANNA CLODFELTER, P.L.S., IN THE OFFICES OF MOCK, ROOS & ASSOCIATES, INC., 5720 CORPORATE WAY, WEST PALM BEACH, FLORIDA 33407.

MOCK, ROOS & ASSOCIATES, INC.		5720 CORPORATE WAY, WEST PALM BEACH, FL 33407 (407) 683-3113	
SCALE: 1"=40'	DATE: NOVEMBER 1994	WINSTON TRAILS PARCEL TEN	
P. A. NO. 94155.00	DWG. NO. 45-42-02-14	PART OF WINSTON TRAILS, P. U. D. SECTION 2, TOWNSHIP 45 SOUTH, RANGE 42 EAST	

TAZ-437

SUBDIVISION WINSTON TRAILS
BOOK 76 PAGE 191
FLOOD MAP 41015
ZONING RS
QUAD 34 ZIP CODE 33412
87-112
7/3/94

Rev. 6-11-95
Rev. 5-28-95
Rev. 5-07-95
Rev. 3-07-95
CADD FILE
WINTRP11