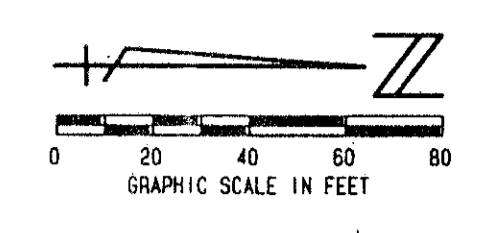


STATE OF FLORIDA
 COUNTY OF PALM BEACH

THIS PLAT WAS FILED FOR
 RECORD _____ DAY OF
 THIS _____ AD, 1995 AND DULY RECORDED
 IN PLAT BOOK _____ ON PAGES
 _____ AND _____

DOROTHY H. WILKEN, CLERK
 BY: _____ D.C.

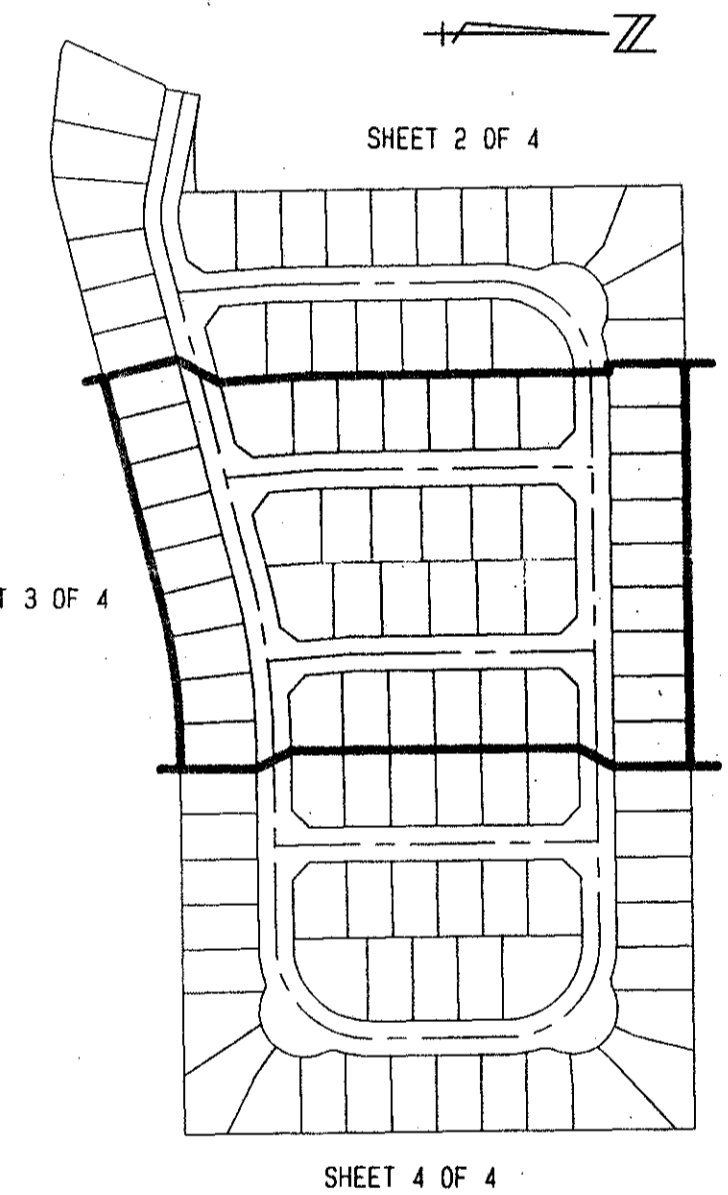
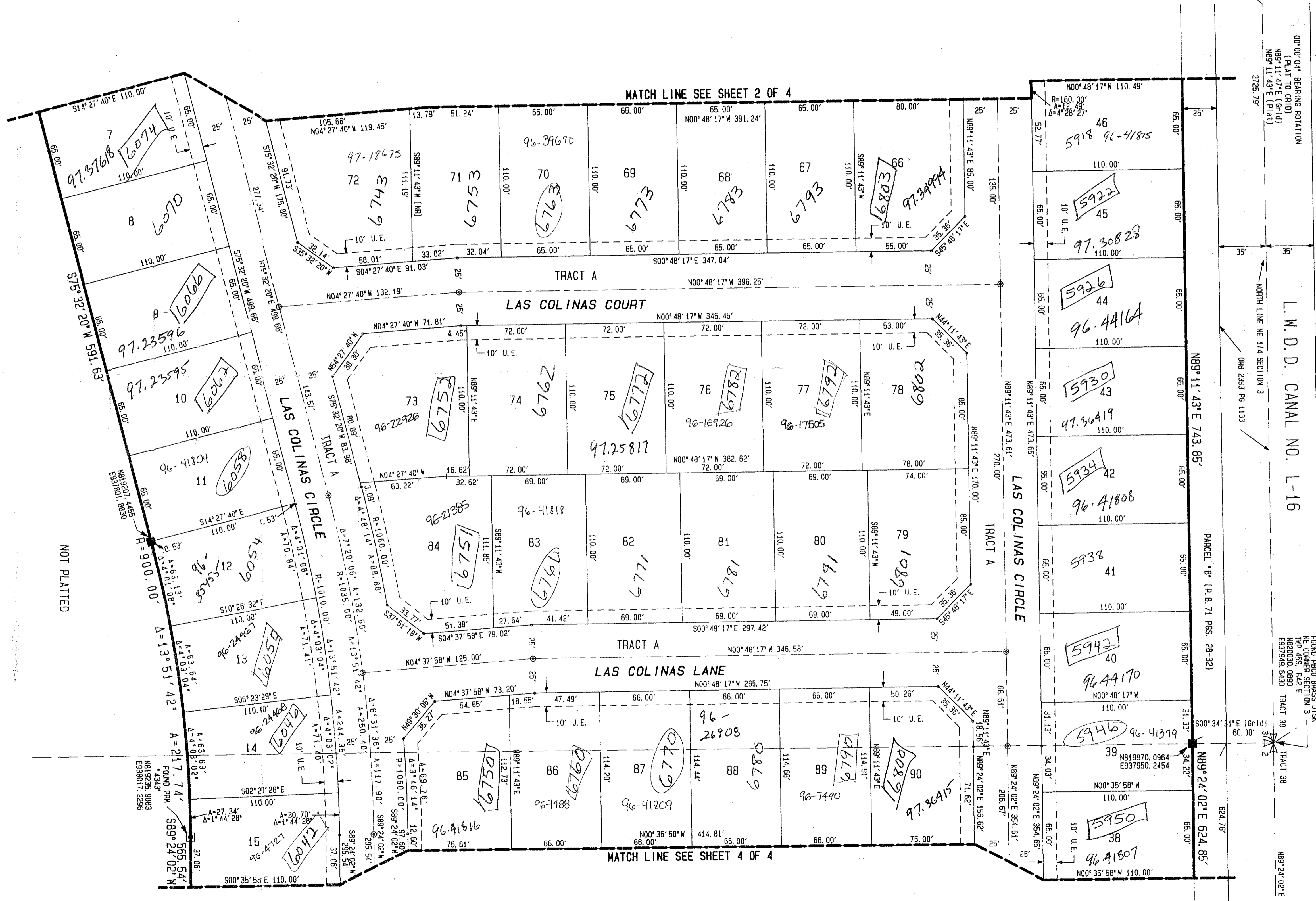


CIRCUIT COURT SEAL

WINSTON TRAILS PARCEL SIX

PART OF WINSTON TRAILS P. U. D.
 BEING A REPLAT OF PARCEL F, WINSTON TRAILS PLAT ONE
 (P. B. 71, PGS. 28 - 32)
 SITUATE IN SECTIONS 2 & 3, TOWNSHIP 45 SOUTH, RANGE 42 EAST
 PALM BEACH COUNTY, FLORIDA
 JANUARY, 1995 SHEET 3 OF 4

- LEGEND:
- L. W. D. D. LAKE WORTH DRAINAGE DISTRICT
 - FPL FLORIDA POWER & LIGHT
 - ORB OFFICIAL RECORD BOOK
 - PBCO PALM BEACH COUNTY
 - PRM PERMANENT REFERENCE MONUMENT
 - P. B. PLAT BOOK
 - Pp. PAGES
 - P6 PAGE
 - U. E. UTILITY EASEMENT
 - D. E. DRAINAGE EASEMENT
 - A. E. ACCESS EASEMENT AND MAINTENANCE EASEMENT
 - TWP TOWNSHIP
 - RGE RANGE
 - (NR) NON RADIAL
 - CENTER LINE
 - PERMANENT CONTROL POINT
 - PERMANENT REFERENCE MONUMENT
 - SET PLS. 4763
 - ⊠ PERMANENT REFERENCE MONUMENT FOUND



SHEET INDEX
 (NOT TO SCALE)

PET. 87-112
ALLOC #000
5/2/2/5

ALL DISTANCES ARE GROUND.
 SCALE FACTOR = 1.0000532

THIS INSTRUMENT WAS PREPARED BY MARY HANNA CLODFELTER, P.L.S., IN THE OFFICES OF MOCK, ROOS & ASSOCIATES, INC., 5720 CORPORATE WAY, WEST PALM BEACH, FLORIDA 33407.

MOCK, ROOS & ASSOCIATES, INC.
 5720 CORPORATE WAY, WEST PALM BEACH, FL 33407 (407) 683-3113

SCALE: 1"=40'

DATE: NOVEMBER 1994

WINSTON TRAILS PARCEL SIX

P. A. NO. 94156.00

DWG. NO. 45-42-03-15

PART OF "WINSTON TRAILS, P. U. D."

SECT. 2 & 3, TOWNSHIP 45 SOUTH, RANGE 42 EAST

0587-014

Rev. 5-20-95
 Rev. 5-04-95
 Rev. 3-08-95

CADD FILE
 WINTRP15

76 804 173
 87-112
 5/2/2/5

TAZ-437

NOT PLATTED