

NOVEMBER 1995

WATERWAY PLAZA REPLAT OF TRACT "A" AND TRACT "B"

SHEET 2 of 2

152

BEING A REPLAT OF TRACT "A" AND TRACT "B", WATERWAY PLAZA, AS RECORDED IN PLAT BOOK 69, PAGE 88,
AND LYING IN SECTION 23, TOWNSHIP 43 SOUTH, RANGE 41 EAST, VILLAGE OF ROYAL PALM BEACH, PALM BEACH COUNTY, FLORIDA

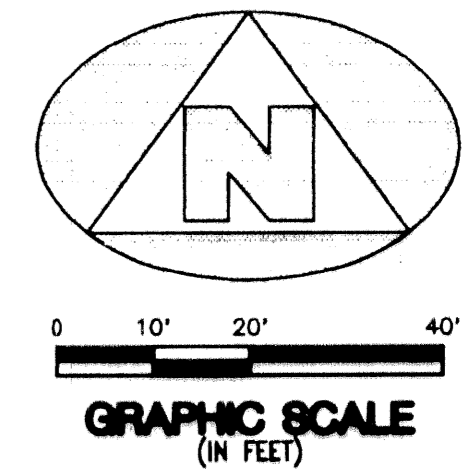
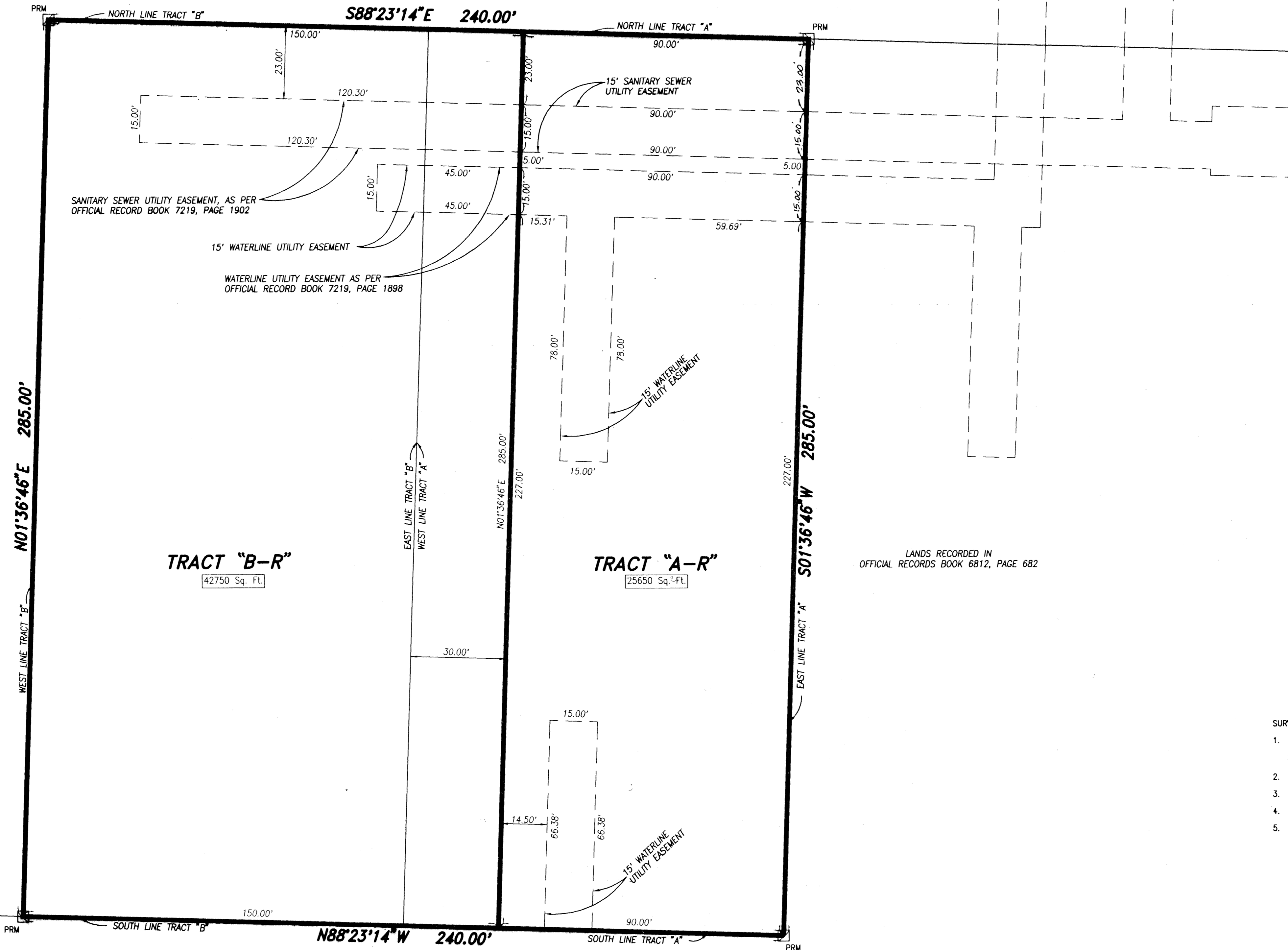
TRACT "C"
WATERWAY PLAZA
(PLAT BOOK 69, PAGE 88)

TRACT "C"
WATERWAY PLAZA
(PLAT BOOK 69, PAGE 88)

TRACT "B-R"
42750 Sq. Ft.

TRACT "A-R"
25650 Sq. Ft.

TRACT "C"
HAWTHORN II
(PLAT BOOK 31, Pg. 26)



SURVEYOR'S NOTES AND LEGEND:

1. BEARINGS SHOWN OR STATED HEREON, ARE BASED ON, OR ARE RELATIVE TO THE ASSUMED BEARING OF SOUTH 01°36'46" WEST ALONG THE EAST LINE OF TRACT "A", WATERWAY PLAZA PLAT BOOK 69, PAGE 88.
2. PRM DENOTES A SET #2424 PERMANENT REFERENCE MONUMENT (P.R.M.)
3. PCP DENOTES A SET #2424 PERMANENT CONTROL POINT (P.C.P.)
4. PRM DENOTES A FOUND #2424 PERMANENT REFERENCE MONUMENT (P.R.M.)
5. PCP DENOTES A FOUND #2424 PERMANENT CONTROL POINT (P.C.P.)

This instrument was prepared by Wm. R. Van Campen, R.L.S., in and for the offices of Bench Mark Land Surveying & Mapping, Inc., 4152 West Blue Heron Boulevard, Suite 121, Riviera Beach, Florida

BENCH MARK
Land Surveying and Mapping, Inc.
4152 West Blue Heron Blvd., Suite 121, Riviera Beach, FL 33404
Fax (407) 844-3659 Phone (407) 846-2102

RECORD PLAT			
WATERWAY PLAZA			
REPLAT OF TRACT "A" AND TRACT "B"			
DWN	DWM	FB	DATE: 21 AUG 1995
CKD	FILE: P47-AB-R.dwg	SCALE: 1" = 20'	WO.# P47
			SHEET 2 OF 2

SUBDIVISION WATERWAY PLAZA
 BOOK 70
 PAGE 152
 FLOOD ZONE B
 FLOOD MAP #0508
 QUAD # 61
 ZONING
 SE
 ZIP CODE 33411
 PUD NAME WATERWAY PLAZA