

- LEGEND**
- D.E. DRAINAGE EASEMENT
 - U.E. UTILITY EASEMENT
 - P.B. PLAT BOOK
 - O.R.B. OFFICIAL RECORD BOOK
 - P.C. POINT OF CURVATURE
 - P.T. POINT OF TANGENCY
 - P.O.C. POINT OF COMMENCEMENT
 - P.O.B. POINT OF BEGINNING
 - P.C.P. PERMANENT CONTROL POINT
 - P.R.M. PERMANENT REFERENCE MONUMENT
 - R/W RIGHT-OF-WAY
 - REF. REFERENCE
 - SEC. SECTION
 - TWP. TOWNSHIP
 - RAD. RADIAL
 - RGE. RANGE
 - P.L.S. PROFESSIONAL LAND SURVEYOR
 - L.B. LICENSED BUSINESS
 - TYP. TYPICAL
 - N.R. NON-RADIAL

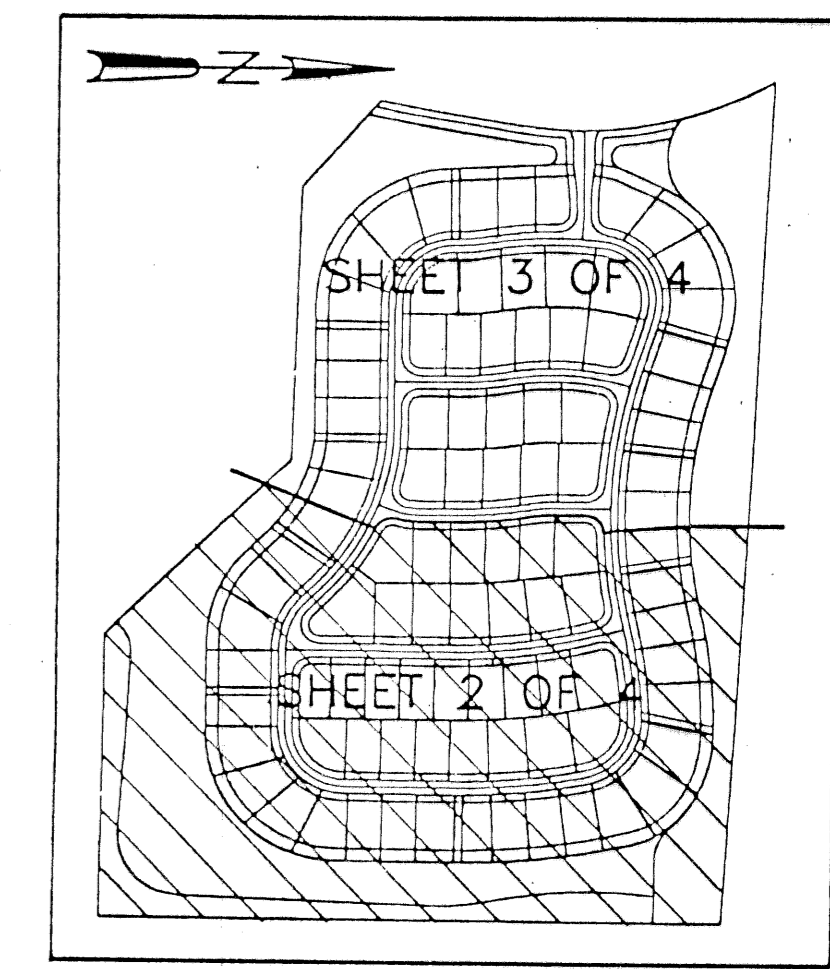
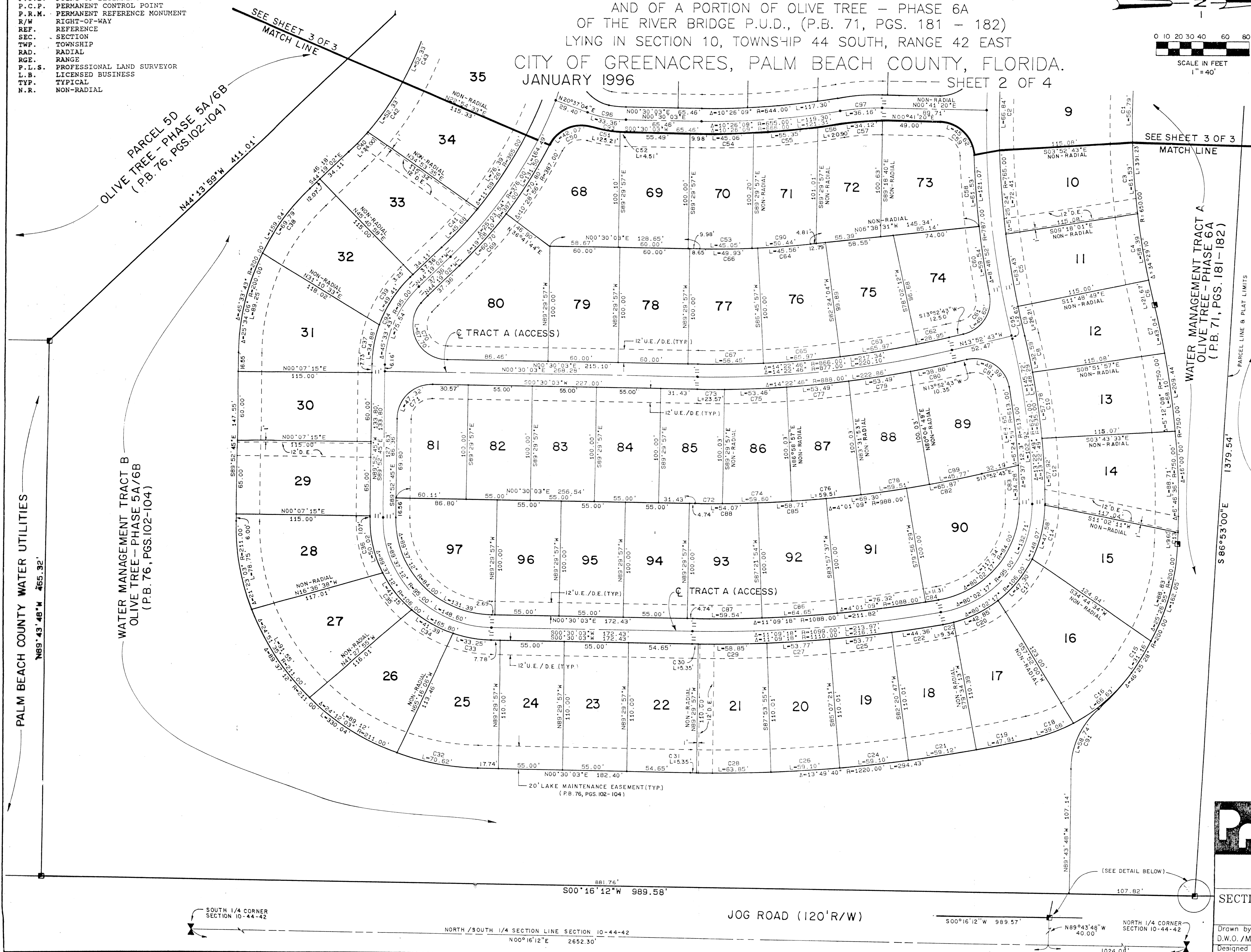
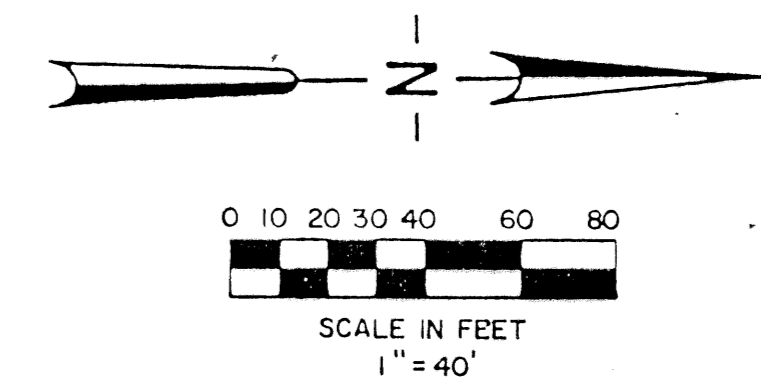
OLIVE TREE - PARCEL 5C

BEING A REPLAT OF A PORTION OF OLIVE TREE - PHASE 5A/6B OF THE RIVER BRIDGE P.U.D., (P.B. 76, PGS. 102 - 104) AND OF A PORTION OF OLIVE TREE - PHASE 6A OF THE RIVER BRIDGE P.U.D., (P.B. 71, PGS. 181 - 182) LYING IN SECTION 10, TOWNSHIP 44 SOUTH, RANGE 42 EAST CITY OF GREENACRES, PALM BEACH COUNTY, FLORIDA. JANUARY 1996 SHEET 2 OF 4

124

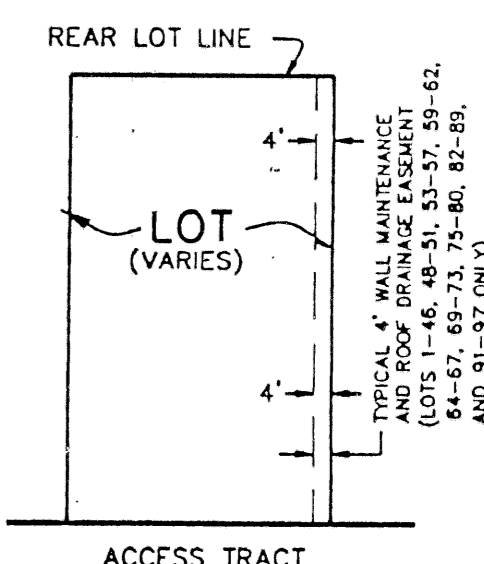
STATE OF FLORIDA
COUNTY OF PALM BEACH
This plat was filed for record at _____, this day of _____, 1996, and duly recorded in Plat Book No. _____ on Pages _____ thru _____.

DOROTHY H. WILKEN
Clerk Circuit Court
By: _____



SHEET INDEX MAP
NOT TO SCALE

OLIVE TREE - PARCEL 6B
(P.B. 72, PGS. 1-7)



TYPICAL LOT DETAIL
NOT TO SCALE
4' WALL MAINTENANCE AND ROOF DRAINAGE EASEMENT (SEE DEDICATION NO. 5)

SUBDIVISION: OLIVE TREE
BOOK: 74
PAGE: 124
FLOOD MAP: -
FLOOD ZONE: -
QUAD: -
ZONING: -
ZIP CODE: -
PUD NAME: -

PETSCH & ASSOCIATES, INC.
Professional Engineers - Land Surveyors - Development Consultants - Testing Services
2581 Melrose Boulevard, Suite 6, West Palm Beach, Florida 33407 (407) 640-3800
6799 Overseas Highway, Suite 7, Marathon, Florida 33050 (305) 743-5788
1600 Redbud Boulevard, Suite 402, McKinney, Texas 75069 (214) 562-9606

OLIVE TREE - PARCEL 5C
SECTION 10, TOWNSHIP 44S., RANGE 42E.
CITY OF GREENACRES, FLORIDA

Drawn by: D.W.O./M.E.H.	Date: SEPT. 1995	SCALE: 1" = 40'	JOB NUMBER: 95-051	SHEET OF 2 OF 4
Designed by: R. HAGLER	Checked by:			