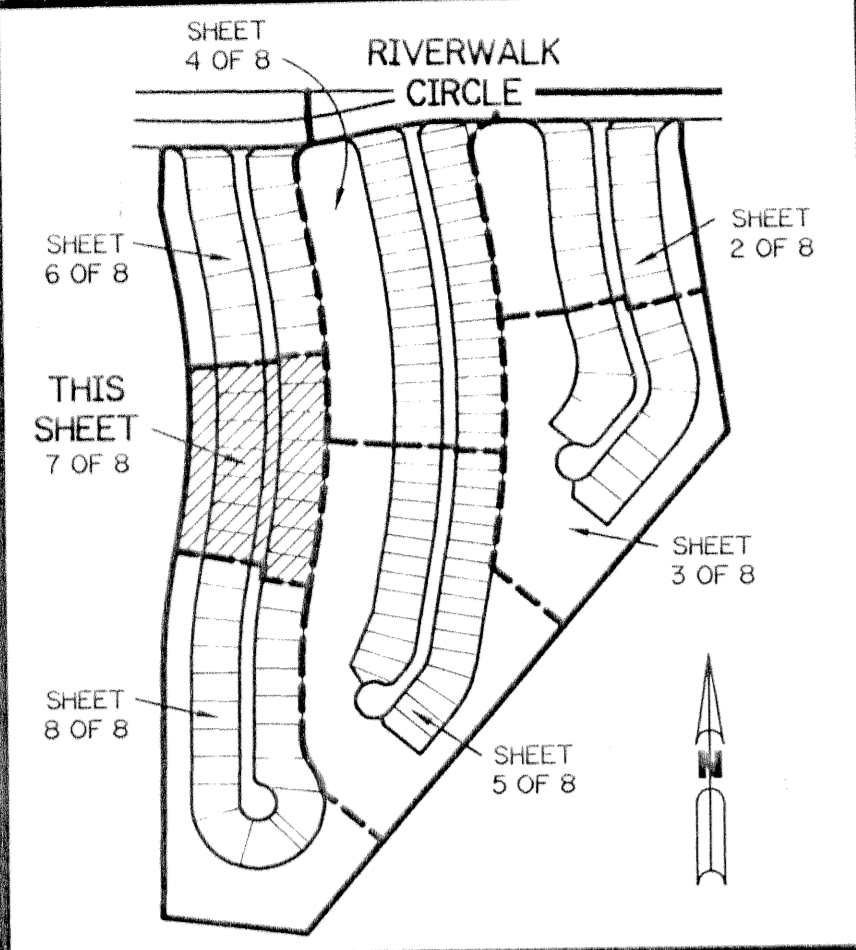


# RIVERWALK - PLAT THREE

A PARCEL OF LAND LYING IN  
SECTION 21, TOWNSHIP 43 SOUTH, RANGE 42 EAST,  
CITY OF WEST PALM BEACH, PALM BEACH COUNTY, FLORIDA.

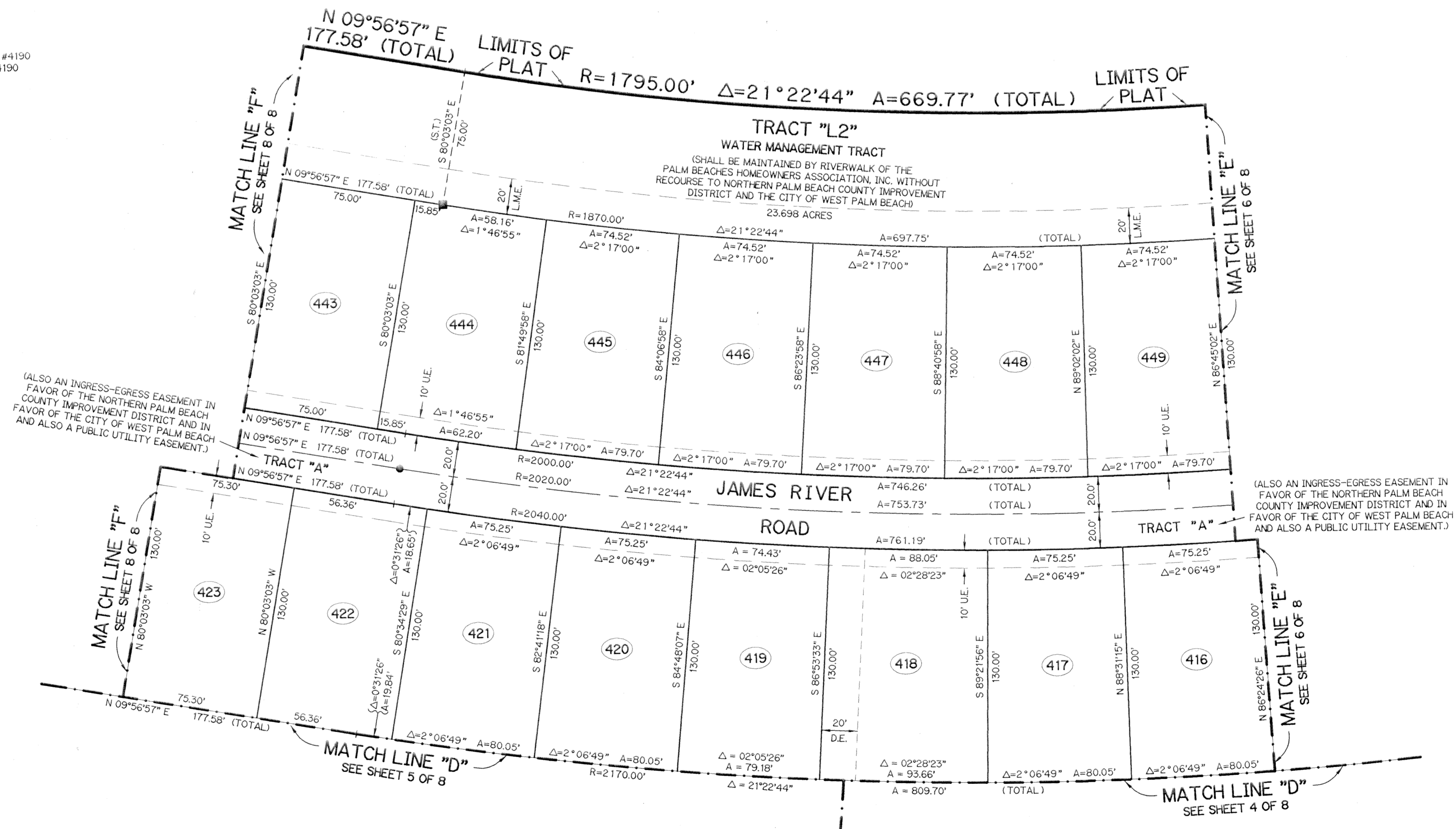
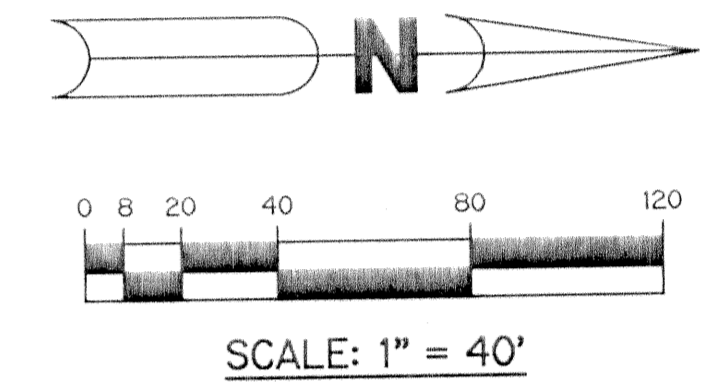
SHEET 7 OF 8 DECEMBER, 1995



KEY MAP  
N.T.S.

LEGEND:

- - FOUND PERMANENT REFERENCE MONUMENT, PLS #4190
- - SET PERMANENT REFERENCE MONUMENT, PLS #4190
- ▲ - PERMANENT CONTROL POINT, PLS #4190
- Δ - DELTA ANGLE
- A - ARC LENGTH
- B.E. - BUFFER EASEMENT
- D.E. - DRAINAGE EASEMENT
- L.M.E. - LAKE MAINTENANCE EASEMENT
- NR - NOT RADIAL
- N.T.S. - NOT TO SCALE
- P.B. - PLAT BOOK
- PGS. - PAGES
- P.L.S. - PROFESSIONAL LAND SURVEYOR
- R - RADIUS
- RE - RIVERWALK EASEMENT
- S.T. - SURVEY TIE
- U.E. - UTILITY EASEMENT
- ⊥ - INDICATES ZERO LOT LINE



RIVERWALK  
SUBDIVISION #  
BOOK 76  
PAGE 121  
FLOOD MAP #  
ZONING  
QUAD #  
SE  
PUD NAME

THIS INSTRUMENT PREPARED BY  
WILBUR F. DIVINE P.S.M. 4190 STATE OF FLORIDA  
LAWSON, NOBLE AND WEBB, INC.  
ENGINEERS PLANNERS SURVEYORS  
WEST PALM BEACH, FLORIDA