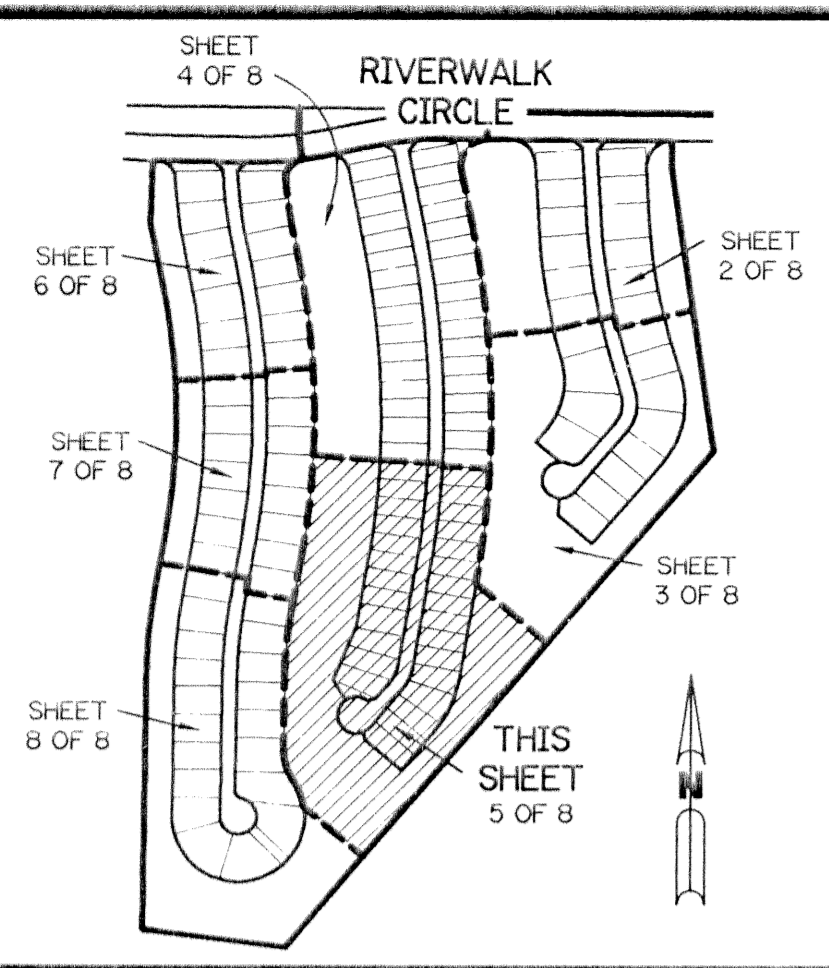
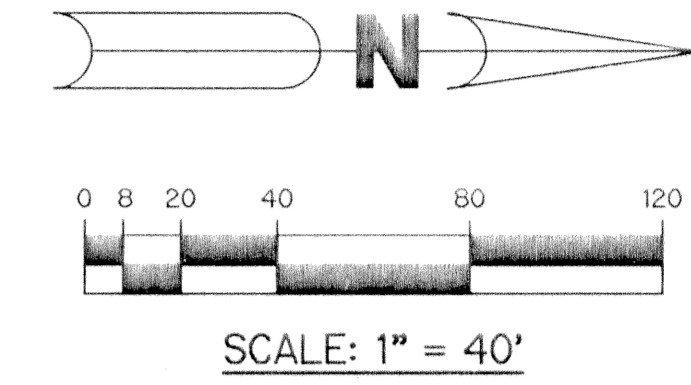


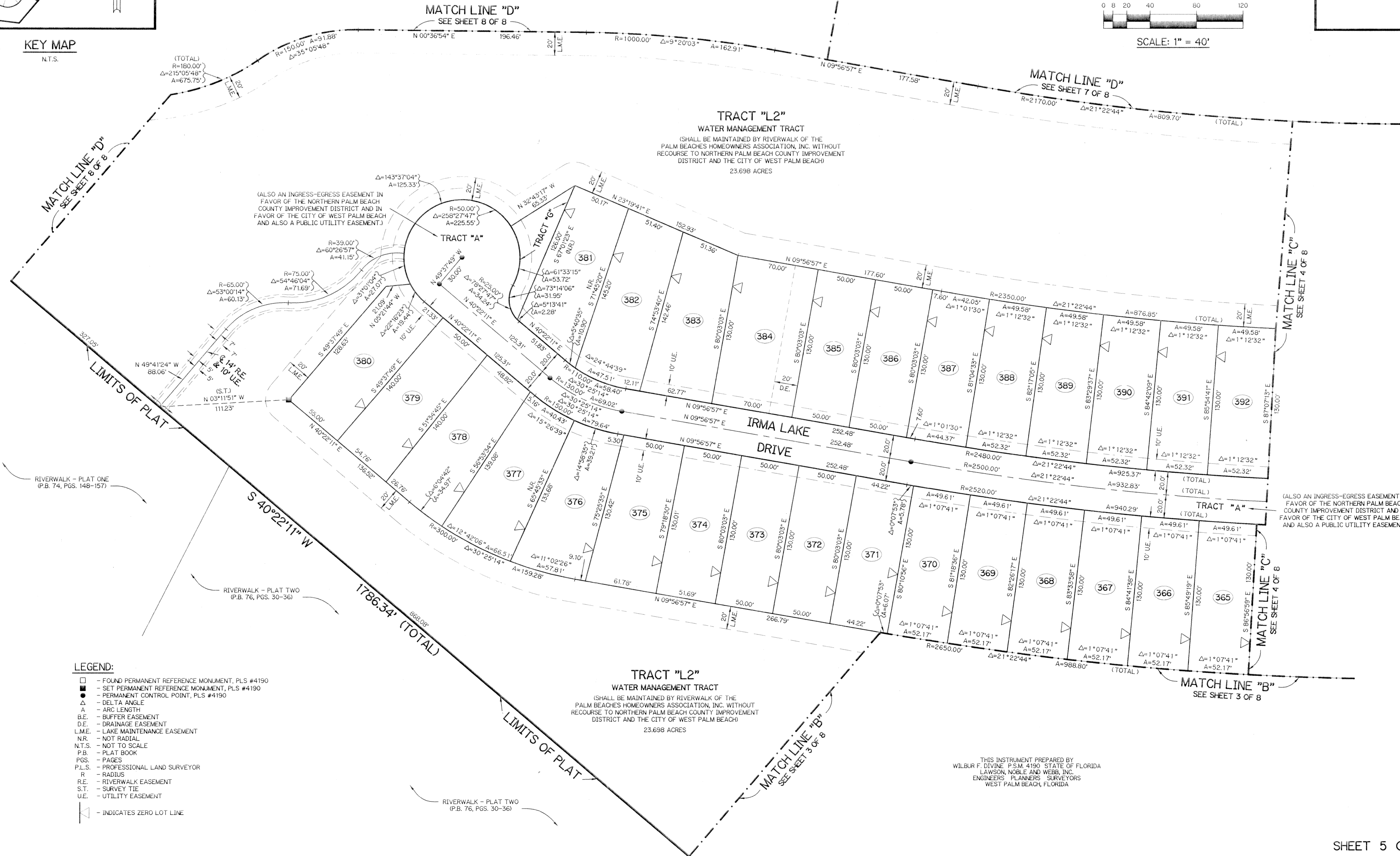
# RIVERWALK - PLAT THREE

A PARCEL OF LAND LYING IN  
SECTION 21, TOWNSHIP 43 SOUTH, RANGE 42 EAST,  
CITY OF WEST PALM BEACH, PALM BEACH COUNTY, FLORIDA.

SHEET 5 OF 8 DECEMBER, 1995



KEY MAP  
N.T.S.



**TRACT "L2"**  
WATER MANAGEMENT TRACT  
(SHALL BE MAINTAINED BY RIVERWALK OF THE  
PALM BEACHES HOMEOWNERS ASSOCIATION, INC. WITHOUT  
RECOURSE TO NORTHERN PALM BEACH COUNTY IMPROVEMENT  
DISTRICT AND THE CITY OF WEST PALM BEACH)  
23.698 ACRES

**TRACT "A"**

(ALSO AN INGRESS-EGRESS EASEMENT IN  
FAVOR OF THE NORTHERN PALM BEACH  
COUNTY IMPROVEMENT DISTRICT AND IN  
FAVOR OF THE CITY OF WEST PALM BEACH  
AND ALSO A PUBLIC UTILITY EASEMENT.)

(ALSO AN INGRESS-EGRESS EASEMENT IN  
FAVOR OF THE NORTHERN PALM BEACH  
COUNTY IMPROVEMENT DISTRICT AND IN  
FAVOR OF THE CITY OF WEST PALM BEACH  
AND ALSO A PUBLIC UTILITY EASEMENT.)

- LEGEND:**
- - FOUND PERMANENT REFERENCE MONUMENT, PLS #4190
  - - SET PERMANENT REFERENCE MONUMENT, PLS #4190
  - - PERMANENT REFERENCE POINT, PLS #4190
  - Δ - DELTA ANGLE
  - A - ARC LENGTH
  - B.E. - BUFFER EASEMENT
  - D.E. - DRAINAGE EASEMENT
  - L.M.E. - LAKE MAINTENANCE EASEMENT
  - N.R. - NOT RADIAL
  - N.T.S. - NOT TO SCALE
  - P.B. - PLAT BOOK
  - P.GS. - PAGES
  - P.L.S. - PROFESSIONAL LAND SURVEYOR
  - R - RADIUS
  - R.E. - RIVERWALK EASEMENT
  - S.T. - SURVEY TIE
  - U.E. - UTILITY EASEMENT
  - △ - INDICATES ZERO LOT LINE

SUBDIVISION # RIVERWALK  
BOOK 76 PAGE 119 FLOOD MAP # -  
FLOOD ZONE - ZONING -  
QUAD # - ZIP CODE -  
SE - PUD NAME -

THIS INSTRUMENT PREPARED BY  
WILBUR F. DIVINE P.S.M. #190 STATE OF FLORIDA  
LAWSON, NOBLE AND WEBB, INC.  
ENGINEERS PLANNERS SURVEYORS  
WEST PALM BEACH, FLORIDA