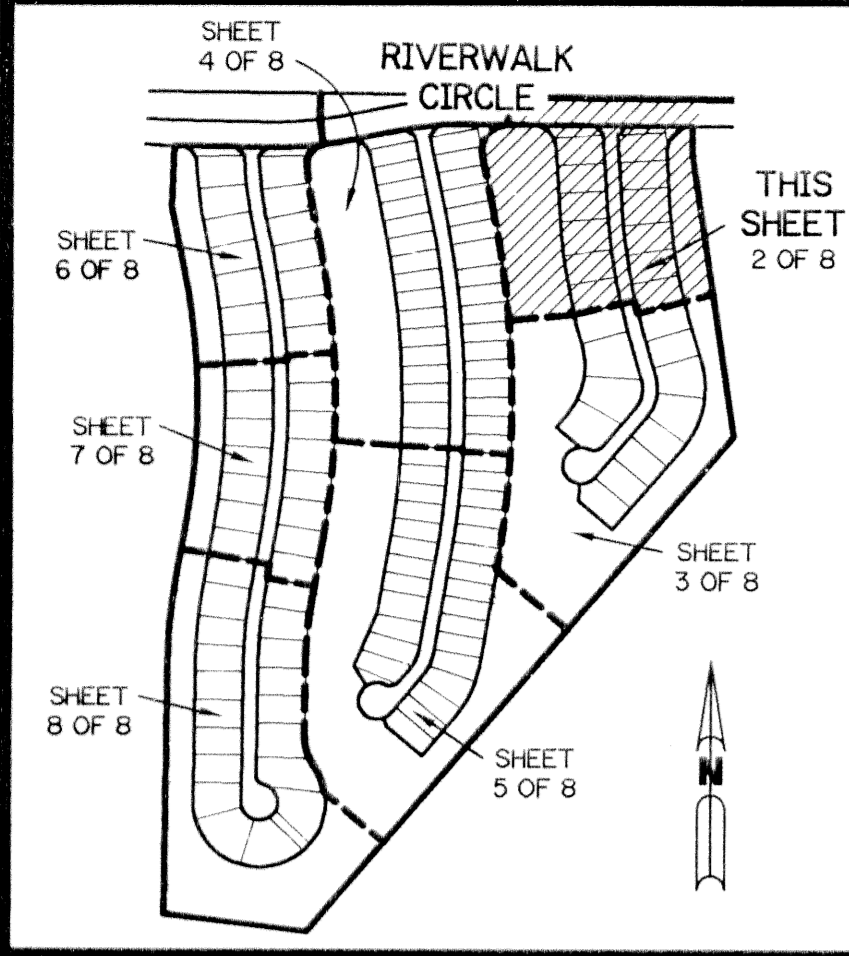


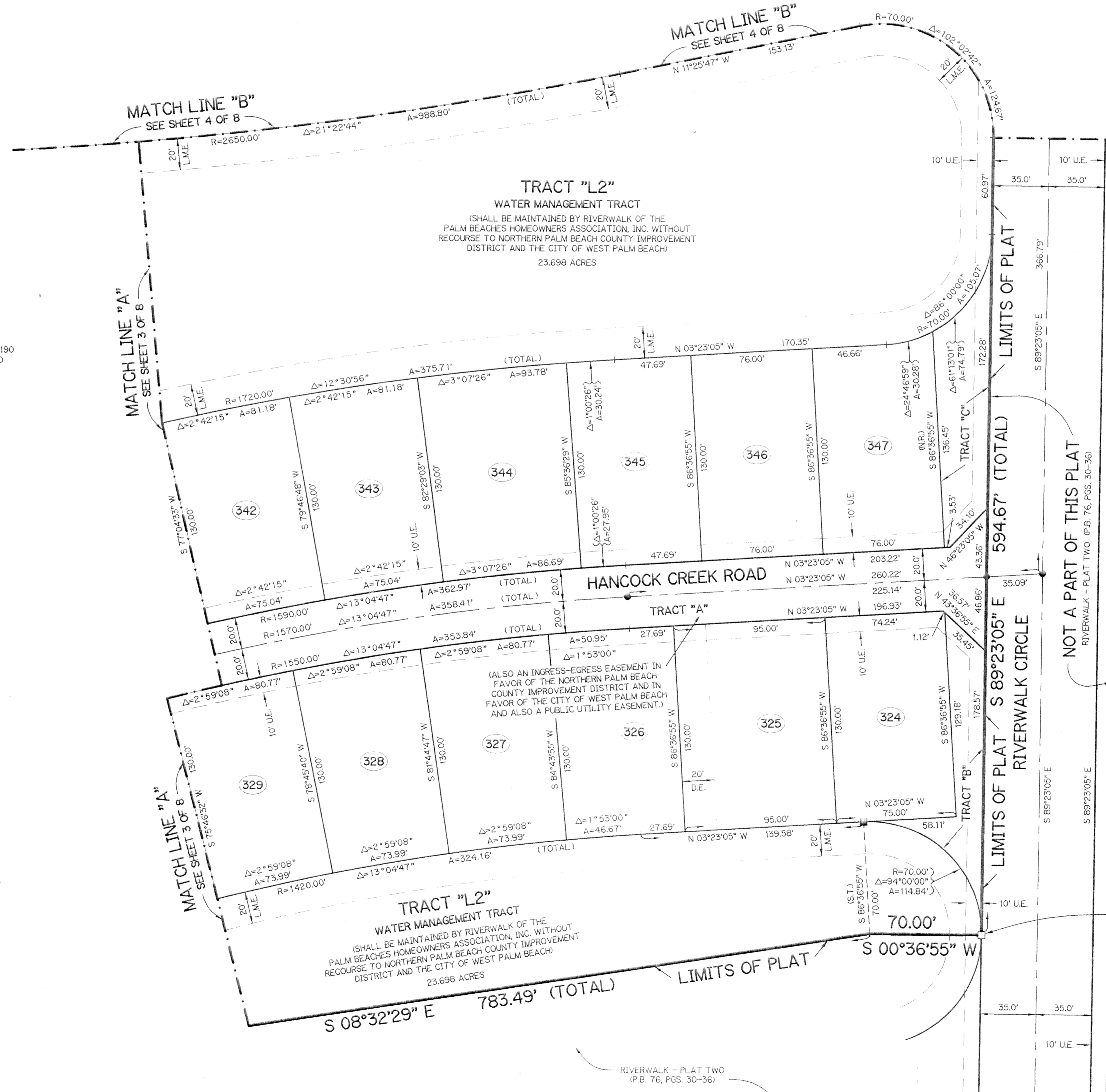
RIVERWALK - PLAT THREE

A PARCEL OF LAND LYING IN
SECTION 21, TOWNSHIP 43 SOUTH, RANGE 42 EAST,
CITY OF WEST PALM BEACH, PALM BEACH COUNTY, FLORIDA.

SHEET 2 OF 8 DECEMBER, 1995

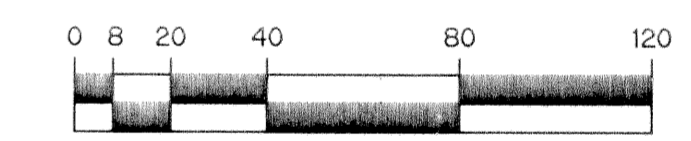


KEY MAP
N.T.S.



LEGEND:

- - FOUND PERMANENT REFERENCE MONUMENT, PLS #4190
- - SET PERMANENT REFERENCE MONUMENT, PLS #4190
- - PERMANENT CONTROL POINT, PLS #4190
- Δ - DELTA ANGLE
- A - ARC LENGTH
- B.E. - BUFFER EASEMENT
- D.E. - DRAINAGE EASEMENT
- L.M.E. - LAKE MAINTENANCE EASEMENT
- N.R. - NOT RADIAL
- N.T.S. - NOT TO SCALE
- P.B. - PLAT BOOK
- P.G.S. - PAGES
- P.L.S. - PROFESSIONAL LAND SURVEYOR
- R - RADIUS
- R.E. - RIVERWALK EASEMENT
- S.T. - SURVEY TIE
- U.E. - UTILITY EASEMENT
- - INDICATES ZERO LOT LINE



SCALE: 1" = 40'

THIS INSTRUMENT PREPARED BY
WILBUR F. DIVINE P.S.M. 4190 STATE OF FLORIDA
LAWSON, NOBLE AND WEBB, INC.
ENGINEERS PLANNERS SURVEYORS
WEST PALM BEACH, FLORIDA

POINT OF BEGINNING
NORTHWEST CORNER
OF TRACT "L2" PER
RIVERWALK - PLAT TWO
(P.B. 76, PGS. 30-36)

SUBDIVISION RIVERWALK
 BOOK 76 PAGE 116
 FLOOD ZONE
 ZONING
 SE
 PUD NAME