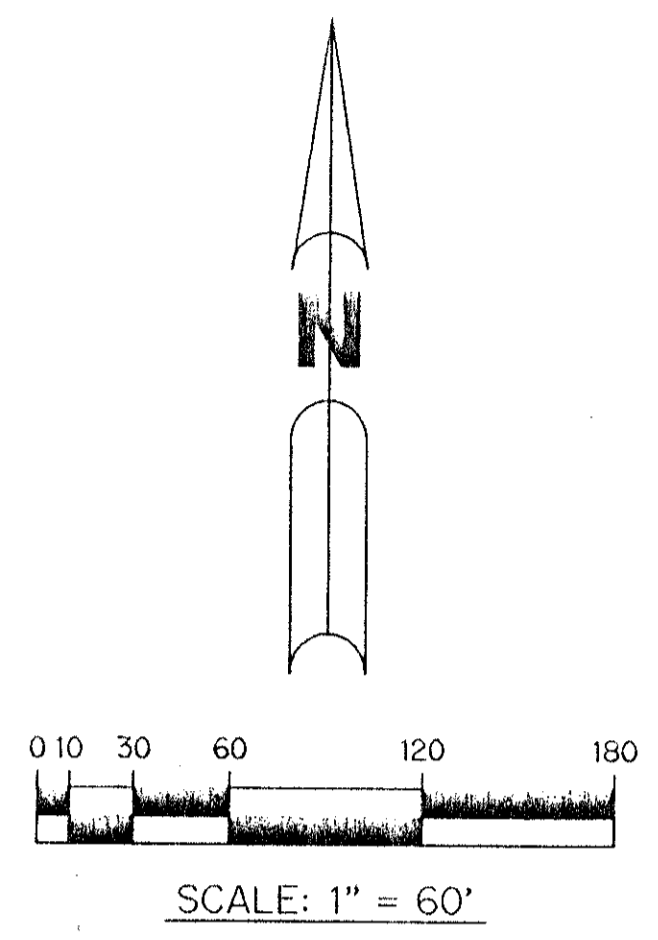
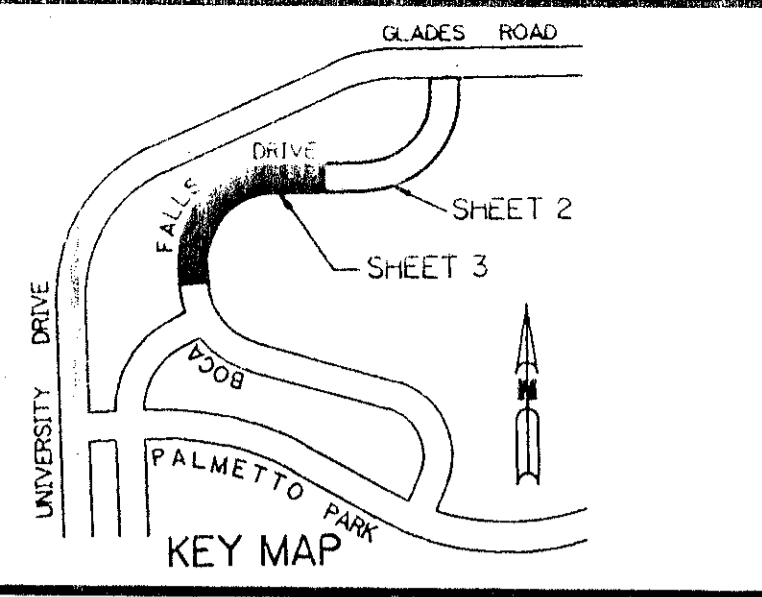


A PART OF THE BAY WINDS PLANNED UNIT DEVELOPMENT

BOCA FALLS DRIVE NORTH HALF OF BOCA FALLS DRIVE

BEING A REPLAT OF A PORTION OF PARCEL Z, A PORTION OF TRACT OS10 AND A PORTION OF TRACT L-5 OF BOCA FALLS - PLAT ONE AS RECORDED IN PLAT BOOK 73, PAGES 124 - 131, PALM BEACH COUNTY PUBLIC RECORDS AND LYING IN SECTION 22, TOWNSHIP 47 SOUTH, RANGE 41 EAST
PALM BEACH COUNTY, FLORIDA
SHEET 3 OF 3 NOVEMBER, 1995



LEGEND:

- - PERMANENT REFERENCE MONUMENT, P.S.M. #4190
 - - PERMANENT CONTROL POINT, P.S.M. #4190
 - Δ - DELTA ANGLE
 - BE - BUFFER EASEMENT
 - DE - DRAINAGE EASEMENT
 - L - ARC LENGTH
 - L.A.E. - LIMITED ACCESS EASEMENT
 - L.M.A.E. - LAKE MAINTENANCE ACCESS EASEMENT
 - L.M.E. - LAKE MAINTENANCE EASEMENT
 - L.W.D.D. - LAKE WORTH DRAINAGE DISTRICT
 - N.R. - NOT RADIAL
 - N.T.S. - NOT TO SCALE
 - O.R.B. - OFFICIAL RECORD BOOK
 - P.B. - PLAT BOOK
 - PGS. - PAGES
 - P.L.S. - PROFESSIONAL LAND SURVEYOR
 - P.S.M. - PROFESSIONAL SURVEYOR AND MAPPER
 - P.U.D. - PLANNED UNIT DEVELOPMENT
 - R - RADIUS
 - R/W - RIGHT-OF-WAY
 - S.T. - SURVEY TIE
 - U.E. - UTILITY EASEMENT
- N 737648.0171 DENOTES STATE PLANE COORDINATES
E 905258.2326

BOCA FALLS - PLAT ONE
PARCEL "OS8"
(P.B. 73, PGS. 124-131)

THIS INSTRUMENT WAS PREPARED BY
WILBUR F. DIVINE P.S.M. 4190 STATE OF FLORIDA
LAWSON, NOBLE AND WEBB, INC.
ENGINEERS PLANNERS SURVEYORS
WEST PALM BEACH, FLORIDA

BOCA FALLS - PLAT ONE
NORTH HALF OF BOCA FALLS DRIVE
SUBDIVISION # NORTH HALF OF BOCA FALLS DRIVE
BOOK 73 PAGE 107 FLOOD MAP # 100 B
ROAD # 69 ZONING RT
SE 80-47 ZIP CODE 33448
PUD NAME BAY WINDS

TAZ-778

BOCA FALLS - PLAT ONE
PARCEL Z
(P.B. 73, PGS. 124-131)

BOCA FALLS - PLAT ONE
TRACT "OS12"
(P.B. 73, PGS. 124-131)

BOCA FALLS - PLAT ONE
TRACT "L3"
(P.B. 73, PGS. 124-131)

BOCA FALLS - PLAT ONE
PARCEL Z
(P.B. 73, PGS. 124-131)

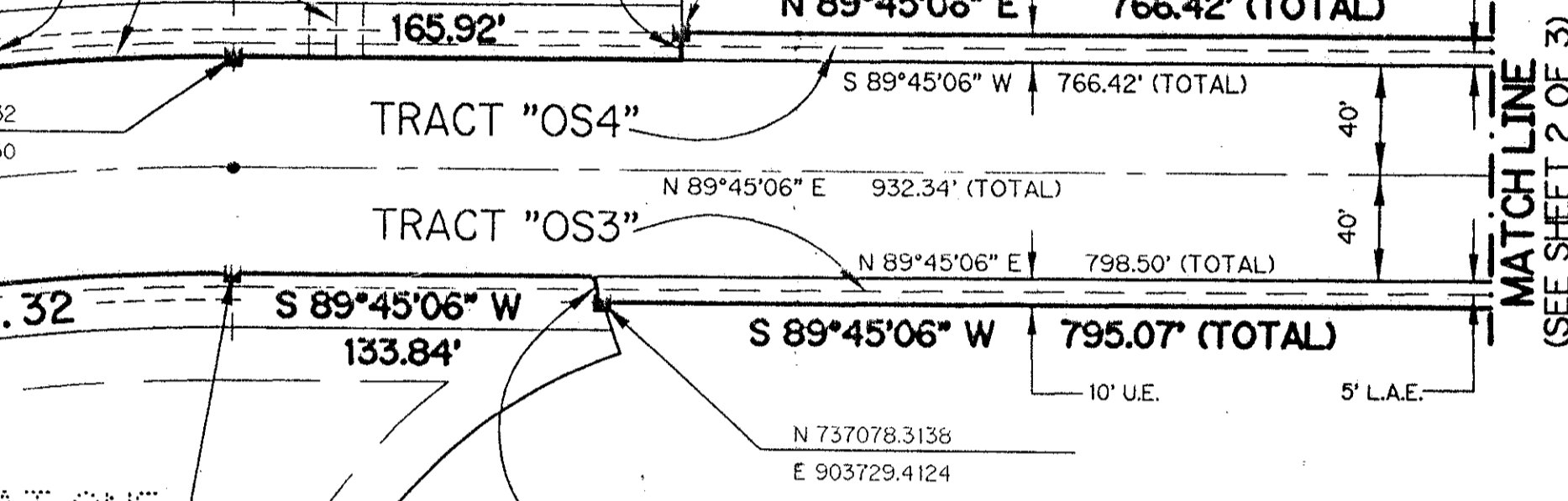
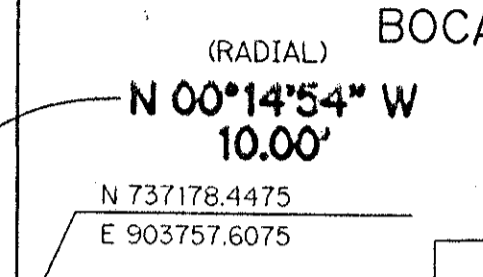
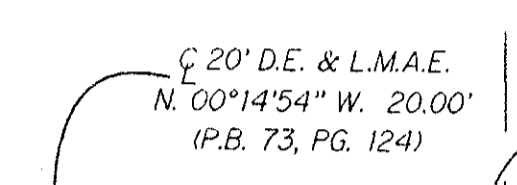
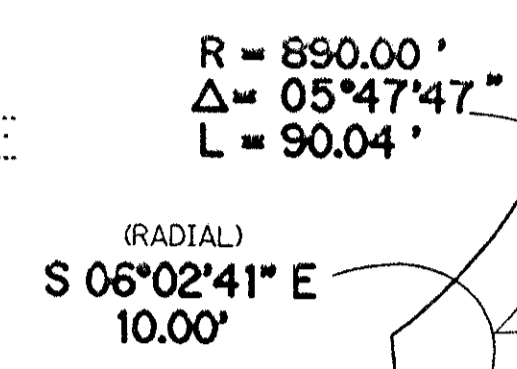
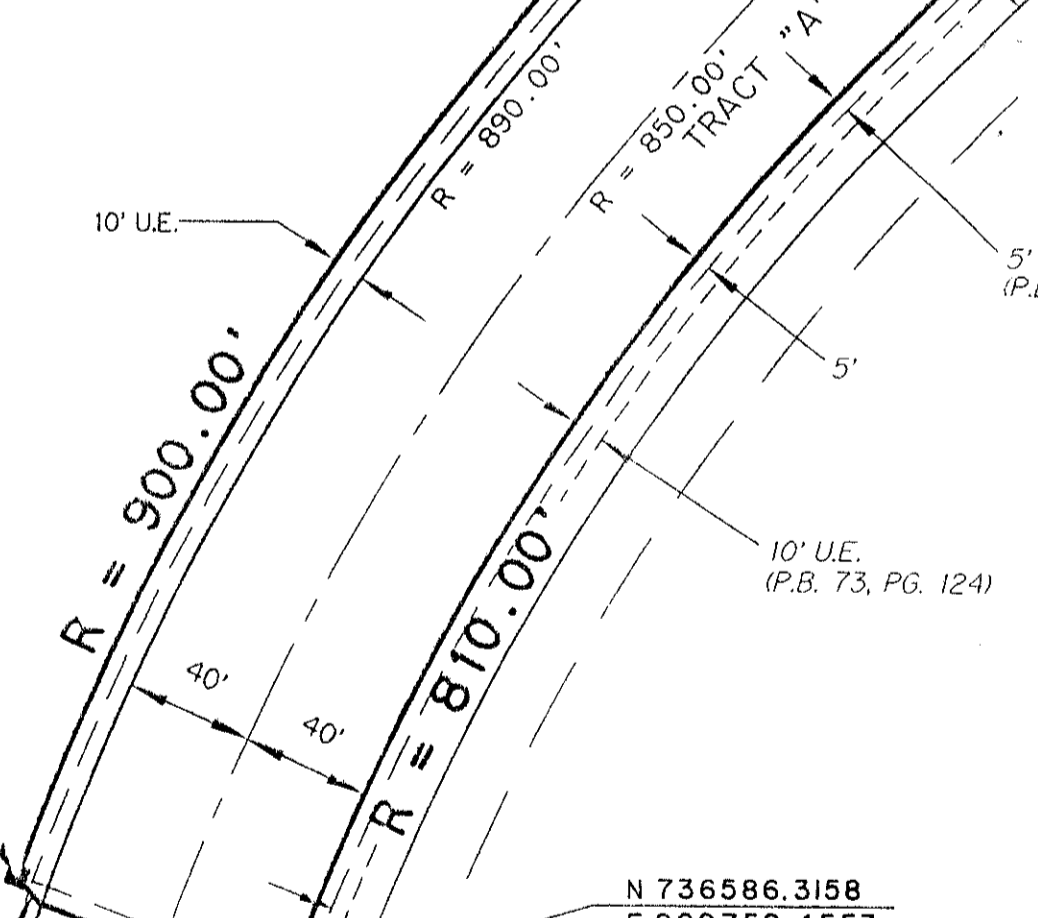
BOCA FALLS - PLAT ONE
TRACT "OS9"
(P.B. 73, PGS. 124-131)

BOCA FALLS - PLAT ONE
TRACT "L5"
(P.B. 73, PGS. 124-131)

BOCA FALLS - PLAT ONE
PARCEL Z
(P.B. 73, PGS. 124-131)

BOCA FALLS - PLAT ONE
TRACT "A"
(P.B. 73, PGS. 124-131)

POINT OF BEGINNING
BOCA FALLS - PLAT ONE
TRACT "OS9"
(P.B. 73, PGS. 124-131)



NOTES:
COORDINATES SHOWN ARE GRID COORDINATES
DATUM = NAD 83 (1990 ADJUSTMENT)
ZONE = FLORIDA EAST ZONE
LINEAR UNIT = U.S. SURVEY FEET
COORDINATE SYSTEM 1983 STATE PLANE TRAVERSE MERCATOR PROJECTION
ALL DISTANCES ARE GROUND
SCALE FACTOR = 1.0000113
N 70°17'57" W (PLAT BEARING) -00°01'09" = BEARING ROTATION
N 70°19'06" W (GRID BEARING) (PLAT TO GRID/COUNTER CLOCKWISE)

N 737078.3138 DENOTES STATE PLANE COORDINATES
E 903729.4124

NORTH HALF OF BOCA FALLS DRIVE

76/107