

# OLIVE TREE - PHASE 5A/6B OF THE RIVER BRIDGE P.U.D.

(BEING A REPLAT OF A PORTION OF PALM BEACH FARMS COMPANY PLAT NO. 3, AS RECORDED IN PLAT BOOK 2, AT PAGE 47, OF THE PUBLIC RECORDS OF PALM BEACH COUNTY, FLORIDA AS ABANDONED BY RESOLUTION R-81-1099, RECORDED IN OFFICIAL RECORD BOOK 3595, PAGES 779 THROUGH 782 INCLUSIVE AND AS ABANDONED BY RESOLUTION R-87-319, RECORDED IN OFFICIAL RECORD BOOK 5215, PAGES 125 THROUGH 129 INCLUSIVE ALL IN THE AFORESAID PUBLIC RECORDS OF PALM BEACH COUNTY) SITUATE IN THE WEST 1/2 OF SECTION 10, TOWNSHIP 44 SOUTH, RANGE 42 EAST, CITY OF GREENACRES, PALM BEACH COUNTY, FLORIDA.

JANUARY 1996

# 103

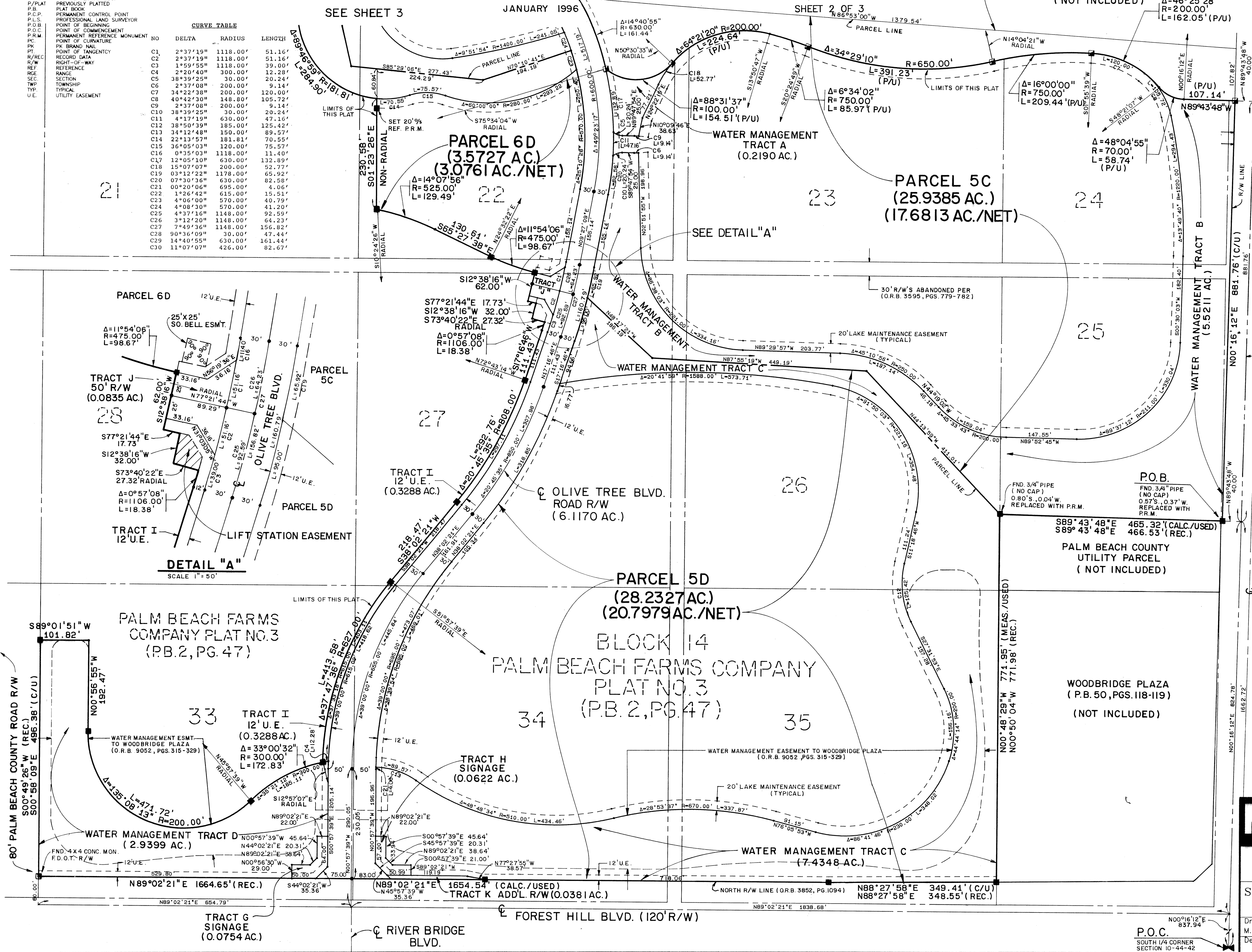
STATE OF FLORIDA  
COUNTY OF PALM BEACH  
This plat was filed for record at \_\_\_\_\_, this \_\_\_\_\_ day of \_\_\_\_\_, 1996, and duly recorded in Plat Book No. \_\_\_\_\_ on Pages \_\_\_\_\_ thru \_\_\_\_\_  
By: \_\_\_\_\_  
DOROTHY H. WILKIN  
Clerk Circuit Court

### ABBREVIATION LEGEND

C/CALC	CALCULATED DIMENSION
D.E.	DRAINAGE EASEMENT
D.S.C.	DRAINAGE
F.D./FND	FOUND
L.S.	LICENSED BUSINESS LAND SURVEYOR
N.R.	NON-RADIAL
O.R.B.	OFFICIAL RECORD BOOK
P/P/PLAT	PREVIOUSLY PLATTED
P.B.	PLAT BOOK
P.C.P.	PERMANENT CONTROL POINT
P.L.S.	PROFESSIONAL LAND SURVEYOR
P.O.B.	POINT OF BEGINNING
P.O.C.	POINT OF COMMENCEMENT
P.R.M.	PERMANENT REFERENCE MONUMENT
P.K.	POINT OF CURVATURE
P.R.	PERMANENT REFERENCE MONUMENT
P.T.	PLAT
R/REC	RIGHT-OF-WAY
R/W	RIGHT-OF-WAY
REF	REFERENCE
R.C.E.	RANGE
SEC.	SECTION
TWP.	TOWNSHIP
TYP.	TYPICAL
U.E.	UTILITY EASEMENT

### CURVE TABLE

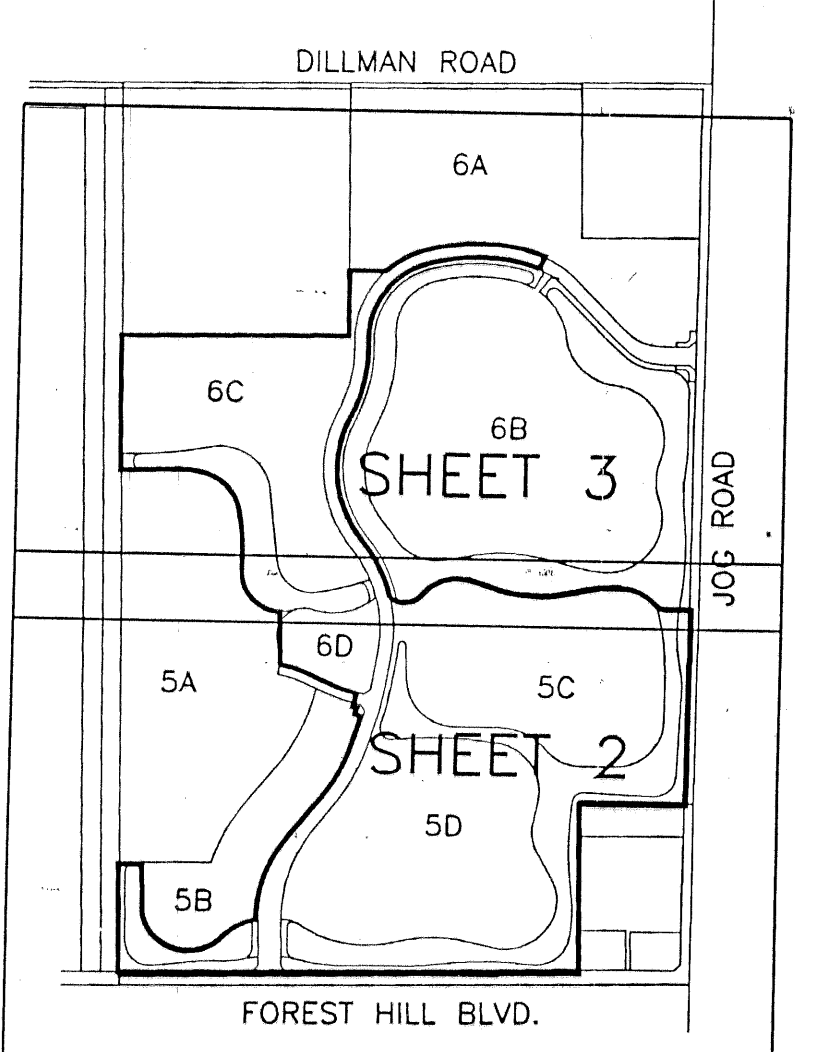
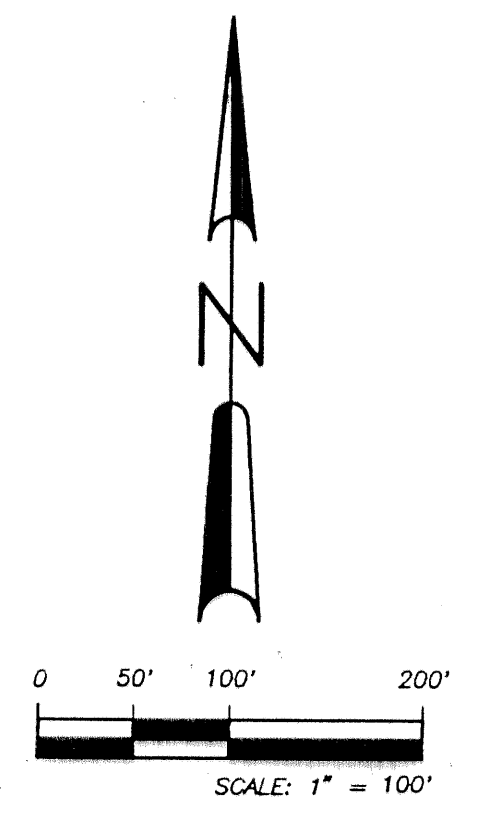
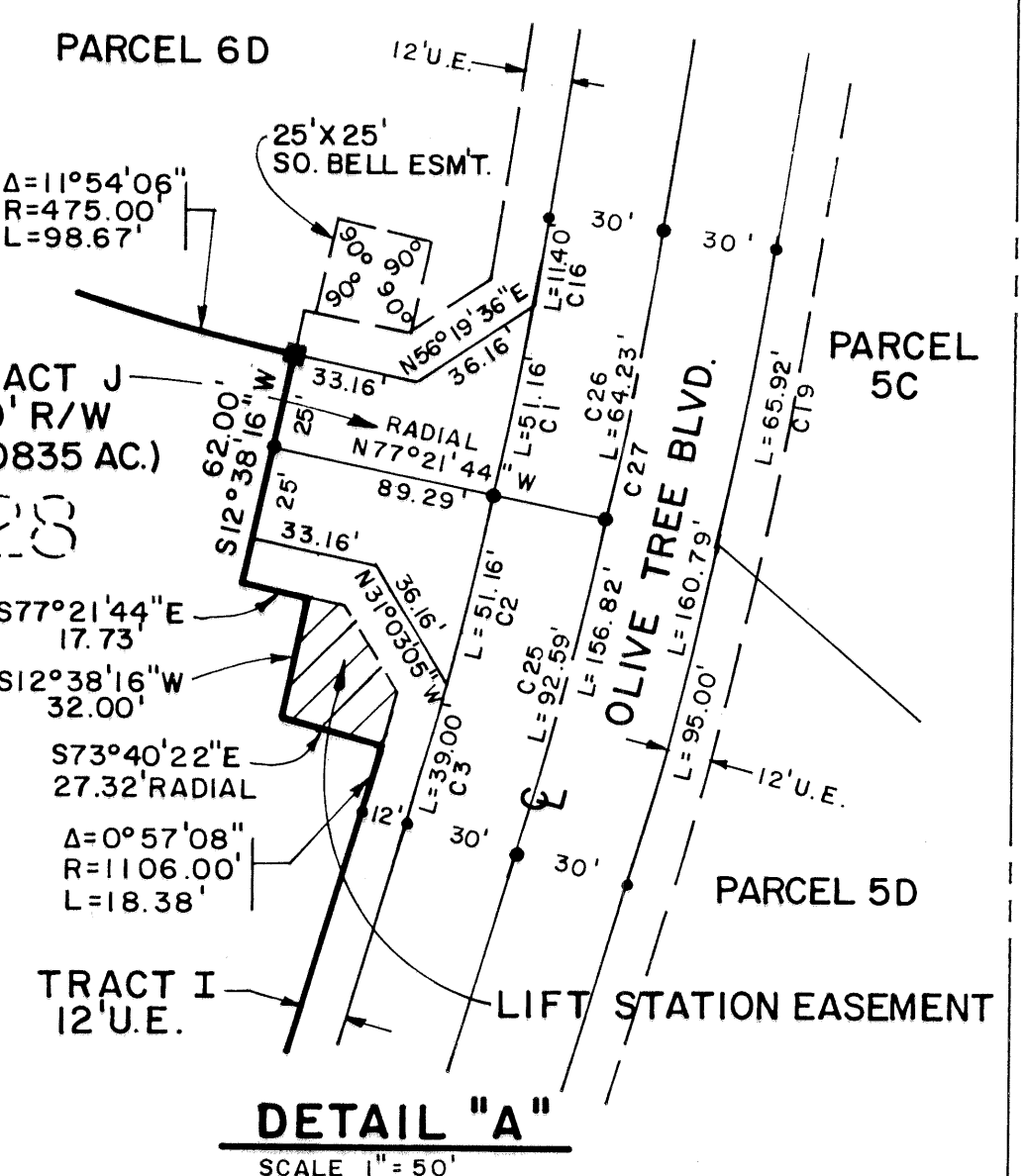
NO	DELTA	RADIUS	LENGTH
C1	2°37'19"	1118.00'	51.16'
C2	2°37'19"	1118.00'	51.16'
C3	1°59'55"	1118.00'	39.00'
C4	2°20'40"	300.00'	12.28'
C5	38°39'25"	30.00'	20.24'
C6	2°37'08"	200.00'	9.14'
C7	34°22'38"	200.00'	120.00'
C8	40°42'30"	148.00'	105.72'
C9	2°37'08"	200.00'	9.14'
C10	38°39'25"	30.00'	20.24'
C11	4°17'19"	630.00'	47.16'
C12	38°50'39"	185.00'	125.42'
C13	34°12'48"	150.00'	89.57'
C14	22°13'57"	181.81'	70.55'
C15	36°05'03"	120.00'	75.57'
C16	0°35'03"	1118.00'	11.40'
C17	12°05'10"	630.00'	132.89'
C18	15°07'07"	200.00'	52.77'
C19	03°12'22"	1178.00'	65.92'
C20	07°30'36"	630.00'	82.58'
C21	00°20'06"	695.00'	4.06'
C22	1°26'42"	615.00'	15.51'
C23	4°06'00"	570.00'	40.79'
C24	4°08'30"	570.00'	41.20'
C25	4°37'16"	1148.00'	92.59'
C26	3°12'20"	1148.00'	64.23'
C27	7°49'36"	1148.00'	156.82'
C28	90°36'09"	30.00'	17.44'
C29	14°40'55"	630.00'	161.44'
C30	11°07'07"	426.00'	82.67'



21

PARCEL 6D  
(3.5727 AC.)  
(3.0761 AC./NET)

PARCEL 5C  
(25.9385 AC.)  
(17.6813 AC./NET)



SUBDIVISION - OLIVE TREE  
 BOOK 76 PAGE 103  
 FLOOD ZONE - FLOOD MAP #  
 ZONING -  
 ZIP CODE -  
 PUD NAME RIVER BRIDGE

**PETSCH & ASSOCIATES, INC.**  
Professional Engineers - Land Surveyors - Development Consultants - Testing Services  
2581 Metrocentre Boulevard, Suite 6, West Palm Beach, Florida 33407 (407) 640-3800  
6799 Overseas Highway, Suite 7, Marathon, Florida 33050 (305) 743-5788

**OLIVE TREE - PHASE 5A/6B OF THE RIVER BRIDGE P.U.D.**

SECTION 10, TOWNSHIP 44S., RANGE 42E.  
CITY OF GREENACRES, FLORIDA

Drawn by:	Date:	SCALE:	JOB NUMBER:	SHEET OF
M.E.H.	AUGUST 1995	1" = 100'	95-050	2 OF 3
Designed by:	Checked by:			
R. HAGLER				