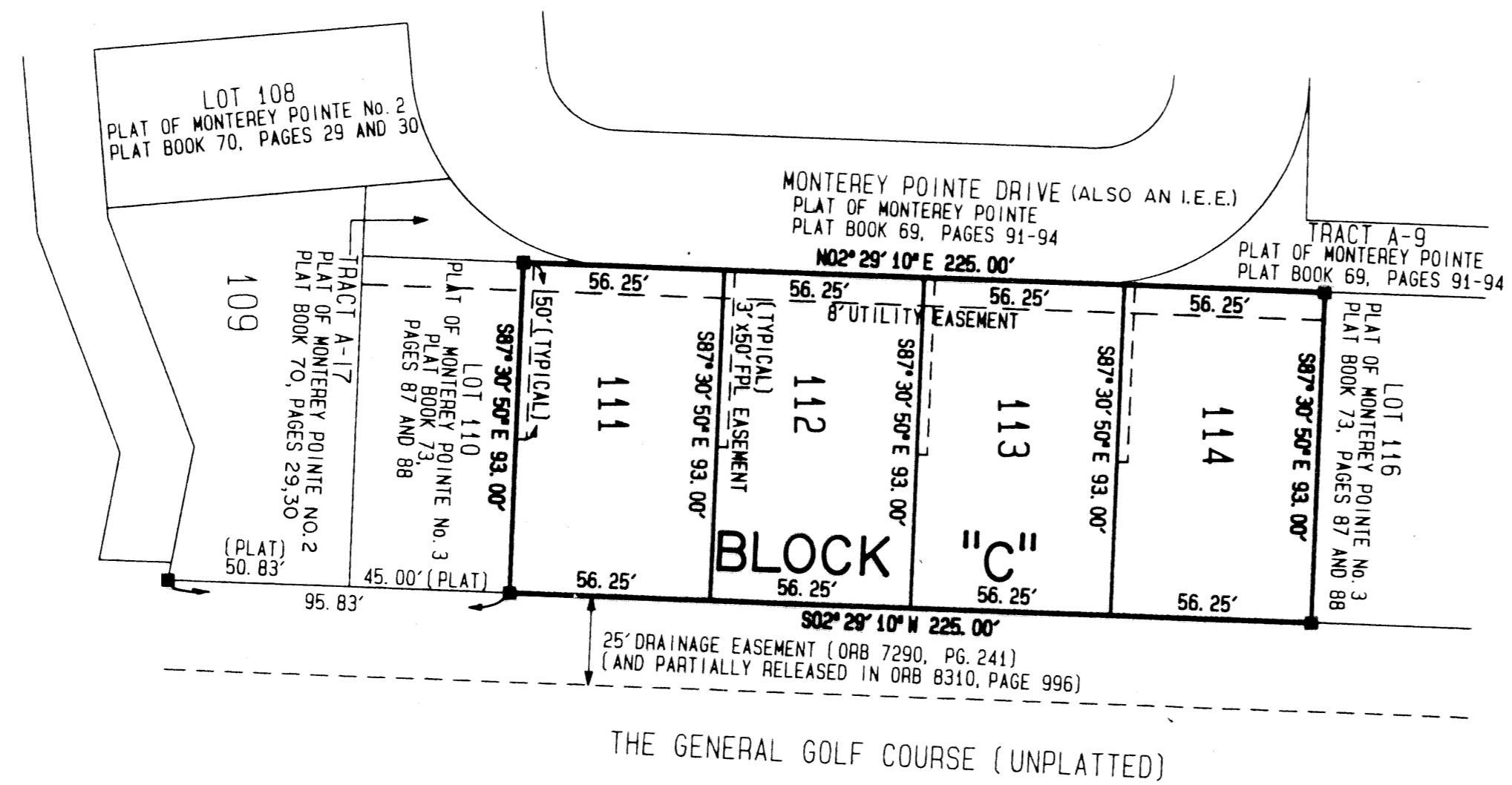
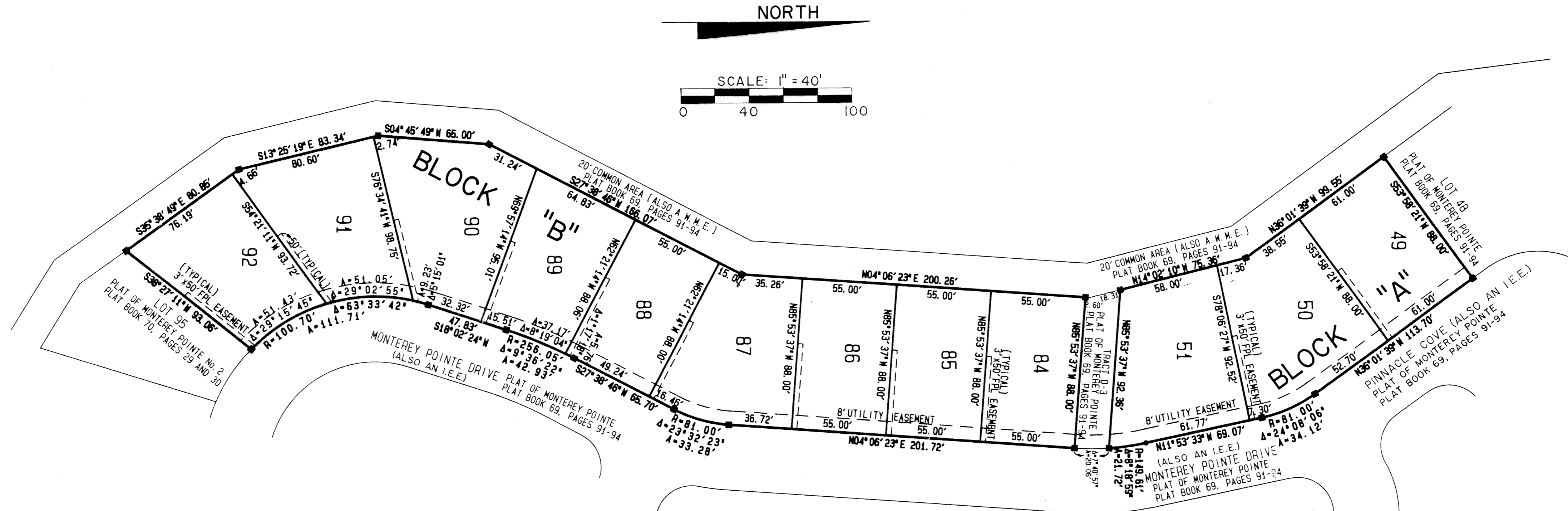


A PLANNED UNIT DEVELOPMENT IN PGA NATIONAL PLANNED COMMUNITY DISTRICT
 PGA RESORT COMMUNITY PLAT OF
MONTEREY POINTE No. 4
 LYING IN SECTION 15, TOWNSHIP 42 SOUTH, RANGE 42 EAST,
 CITY OF PALM BEACH GARDENS, PALM BEACH COUNTY, FLORIDA
 BEING A REPLAT OF LOTS 49 THROUGH 52 OF PGA RESORT COMMUNITY
 PLAT OF MONTEREY POINTE, RECORDED IN PLAT BOOK 69, PAGES 91 THROUGH 94,
 AND OF LOTS 84 THROUGH 94 OF PGA RESORT COMMUNITY PLAT OF MONTEREY
 POINTE NO. 2, RECORDED IN PLAT BOOK 70, PAGES 29 AND 30,
 AND OF LOTS 111 THROUGH 115 OF PGA RESORT COMMUNITY PLAT OF MONTEREY
 POINTE NO. 3, RECORDED IN PLAT BOOK 73, PAGES 87 AND 88,
 PALM BEACH COUNTY PUBLIC RECORDS

JUNE 1995

SHEET 2 OF 2



SUBDIVISION # MONTEREY POINTE No. 4
 BOOK 70 PAGE 2
 FLOOD MAP #
 QUAD #
 ZONING
 ZIP CODE
 PUD NAME CITY OF PALM BEACH GARDENS

TIMOTHY J. MESSLER, INC.
 CONSULTING ENGINEERS AND LAND SURVEYORS
 3950 RCA BOULEVARD, SUITE 5005, PALM BEACH GARDENS, FLORIDA 33410
 TELEPHONE (407) 627-2226 TELEFAX 624-1569

PLAT OF MONTEREY POINTE No. 4

PROJECT NO. 95015P
 DATE: JUNE 1995

NOTICE:
 THERE MAY BE ADDITIONAL RESTRICTIONS
 THAT ARE NOT RECORDED ON THIS PLAT THAT
 MAY BE FOUND IN THE PUBLIC RECORDS OF
 PALM BEACH COUNTY.

THIS INSTRUMENT PREPARED BY:
 MARK D. BROOKS
 PROFESSIONAL LAND SURVEYOR
 STATE OF FLORIDA No. 3426
 FOR: TIMOTHY J. MESSLER, INC.
 3950 RCA BOULEVARD
 SUITE 5005
 PALM BEACH GARDENS, FL.