

LAKERIDGE GREENS

AT PIPER'S GLEN PUD - POD 'D'

SITUATE IN SECTIONS 3 & 4, TOWNSHIP 46 SOUTH, RANGE 42 EAST, PALM BEACH COUNTY, FLORIDA,
A PORTION OF WHICH IS PART OF BLOCK 64 OF PALM BEACH FARMS COMPANY PLAT NO. 3,
AS RECORDED IN PLAT BOOK 2, ON PAGES 45 THROUGH 54, INCLUSIVE OF THE PUBLIC RECORDS
OF SAID PALM BEACH COUNTY.

FEBRUARY, 1995

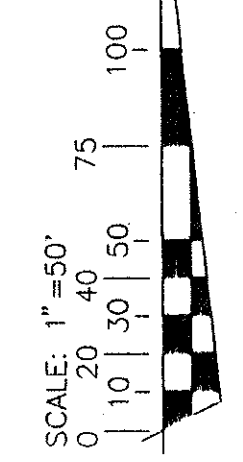
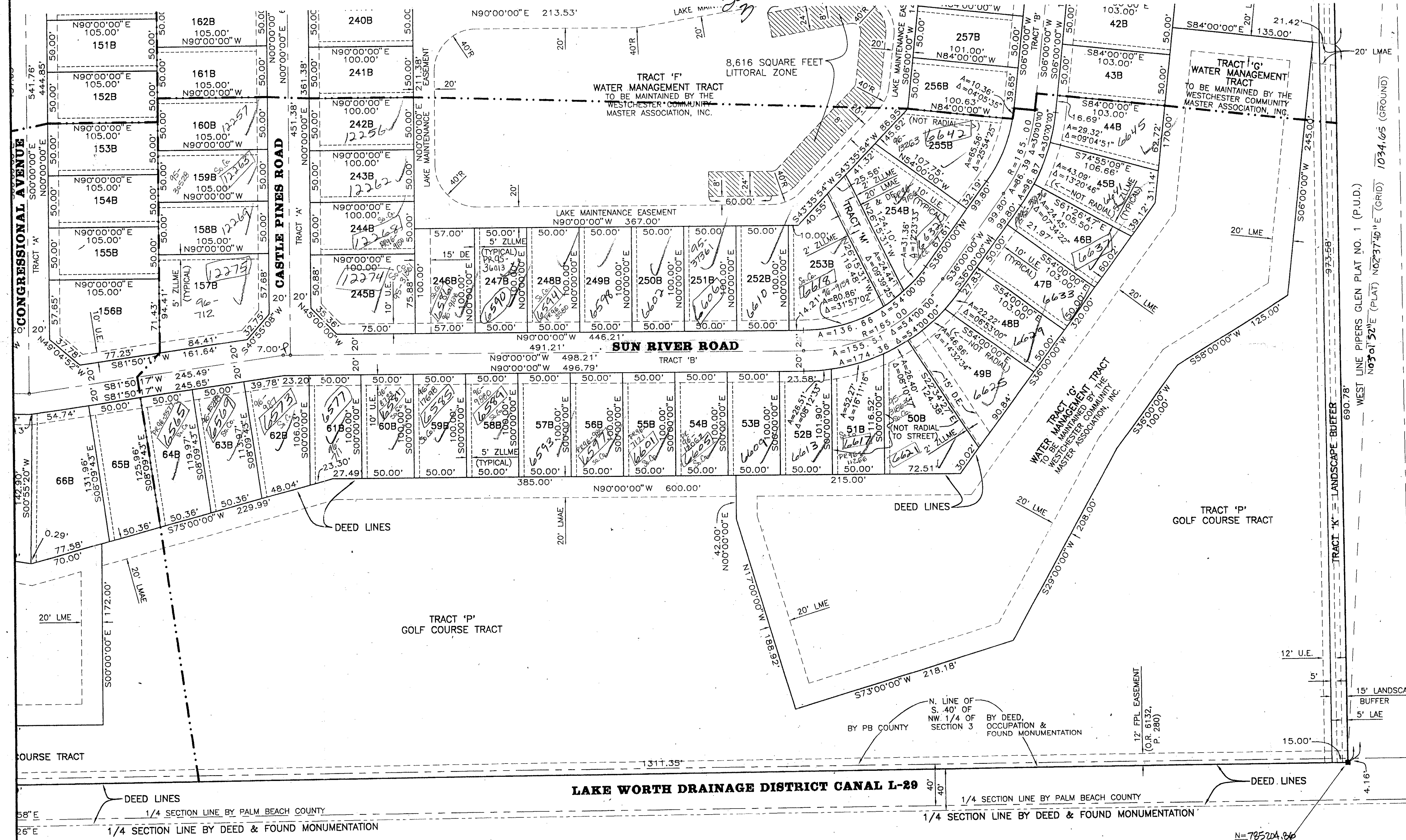
SHEET 8 OF 10

0298015

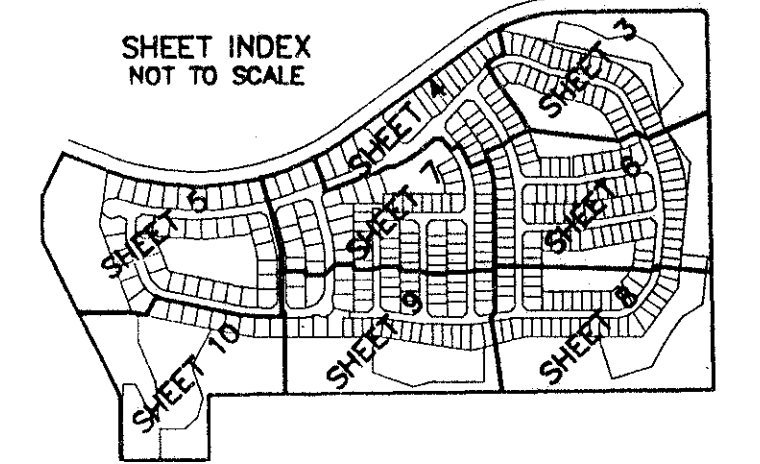
185

STATE OF FLORIDA }
COUNTY OF PALM BEACH } SS
This plat filed for record at _____
this _____ day of _____
19____ and duly recorded in Plat
Book _____ on page _____
DOROTHY H. WILKEN, CLERK of the
Circuit Court.
By: _____ D.C.

*PET. 80-212D
ALLOC. #0002
5/3/95*

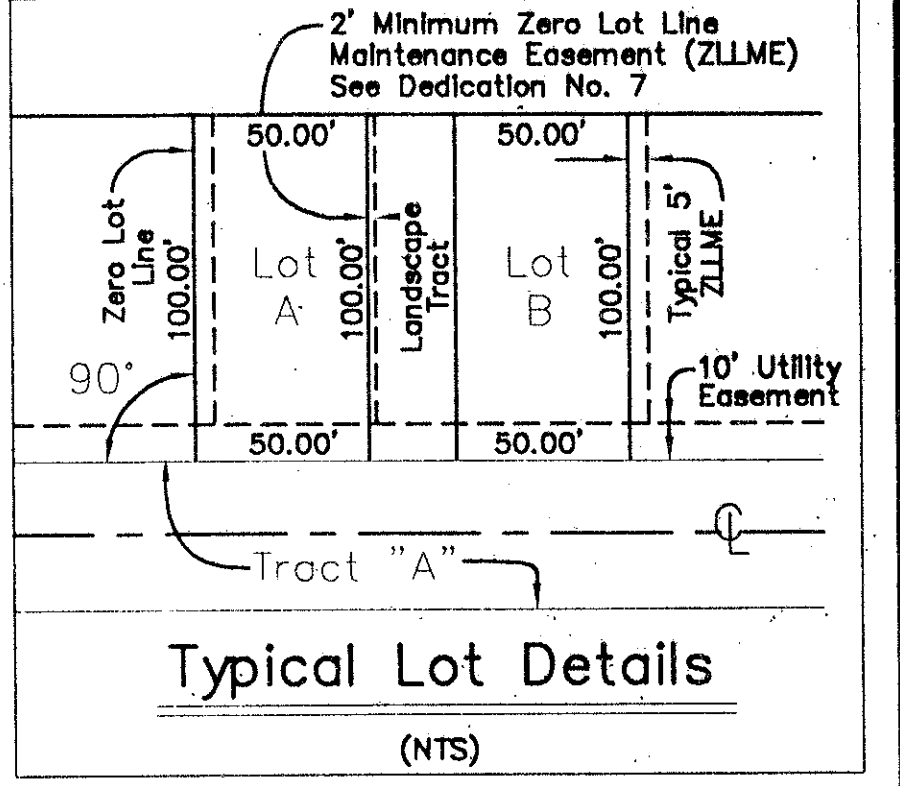


All distances are ground.
Scale factor = 1.000285.
Ground distance X scale factor = Grid Distance.
See sheet 3 for complete coordinate information.



Map Legend :

- = Permanent Control Point
- = Permanent Reference Monument
- ⊙ = Centerline
- Δ = Central Angle (Delta)
- CM = Concrete Monument
- DE = Drainage Easement
- DT = Driveway Tract
- FT = Feet
- L = Arc Length
- LAE = Limited Access Easement
- LME = Lake Maintenance Easement
- LMAE = Lake Maintenance Access Easement
- ORB = Official Record Book
- PB = Plat Book
- PC = Point of Curvature
- PCP = Permanent Reference Point
- Pg = Page
- PRM = Permanent Reference Monument
- R = Radius Length
- Typ = Typical
- UE = Utility Easement
- ZLLME = Zero Lot Line Maintenance Easement



Atlantic - Caribbean Mapping, Inc.
PROFESSIONAL LAND SURVEYORS AND MAPPERS
357 Liana Drive
West Palm Beach, Florida 33415
(407) 687-5898 - Fax (407) 471-8752

Project No. 94085 Dwg No. 94085SPL SHEET 8 OF 10

BOOK 74 PAGE 185
FLOOD MAP #200A
QUAD #36/S1
SE 80-212
PUD NAME Piper's Glen P.U.D.

T42-457

0298-015
LAKERIDGE GREENS 74/185