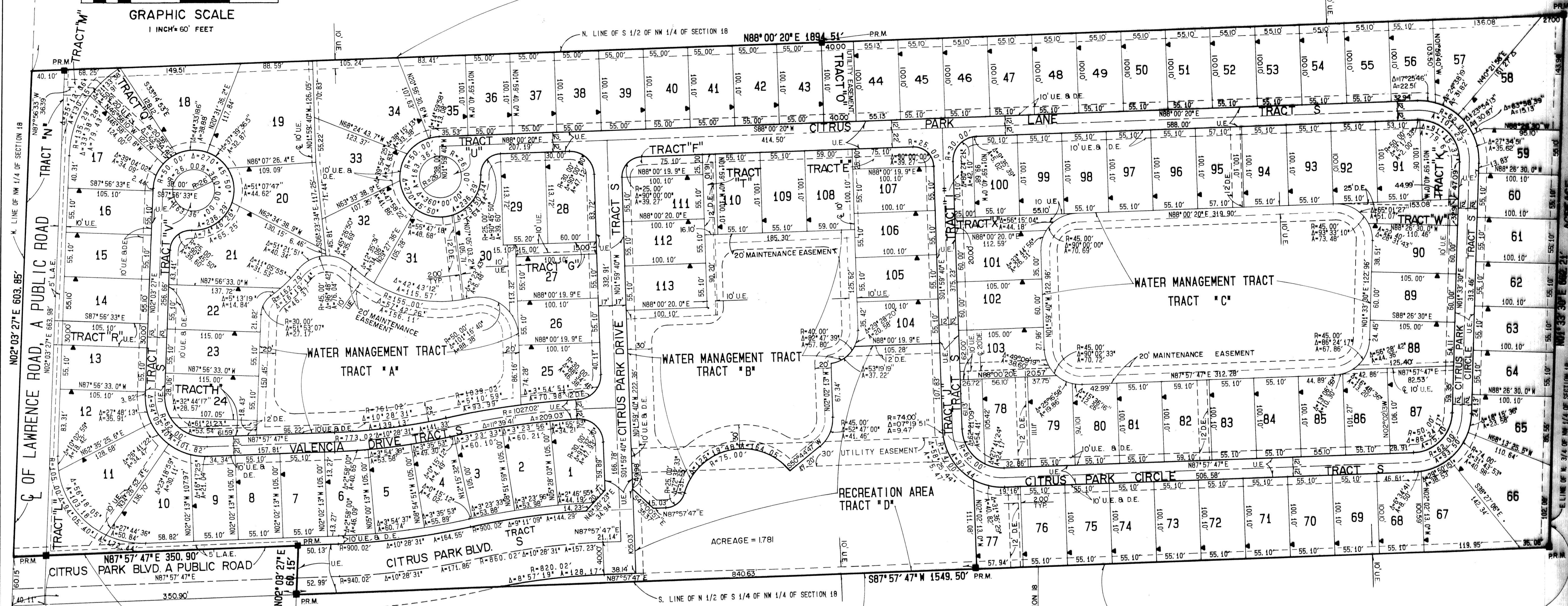
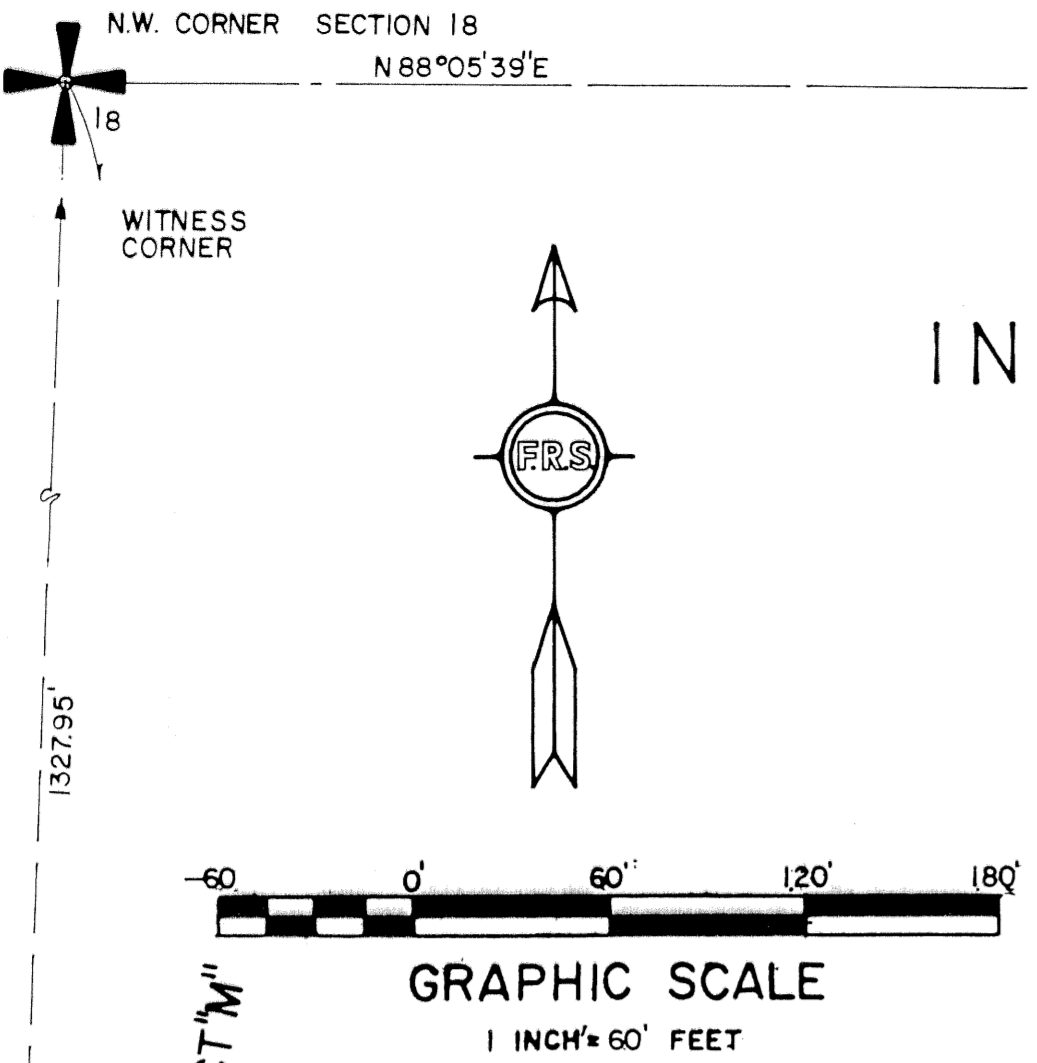


# PLAT OF CITRUS PARK, A P. U. D.

IN SECTION 18, TOWNSHIP 45 SOUTH, RANGE 43 EAST, CITY OF BOYNTON BEACH  
COUNTY OF PALM BEACH, STATE OF FLORIDA  
NOVEMBER 1994 IN 2 SHEETS SHEET NO. 2

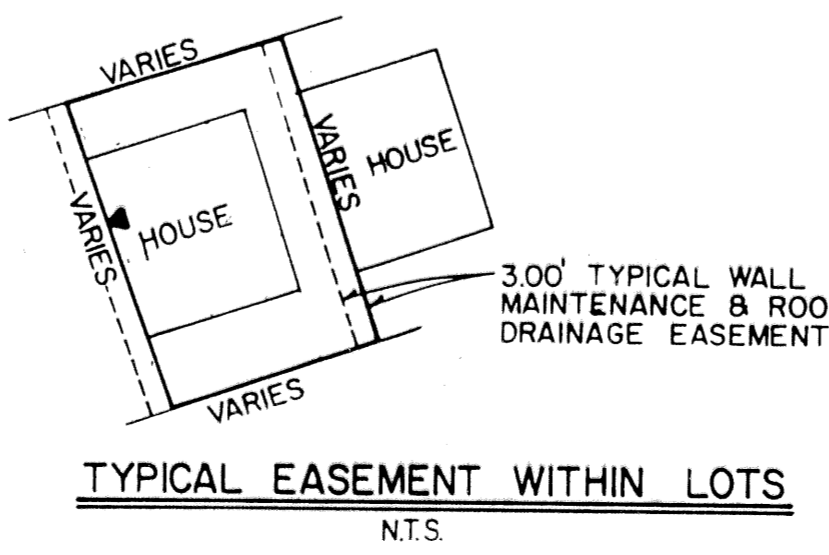
STATE OF FLORIDA SS  
COUNTY OF PALM BEACH  
This plat was filed for record at \_\_\_\_\_ day at \_\_\_\_\_ 19\_\_\_\_ and duly recorded in Plat Book No. \_\_\_\_\_ on page \_\_\_\_\_  
DOROTHY H. WILKEN, Clerk Circuit Court  
By: \_\_\_\_\_

PLAT OF CITRUS TRAIL, A P.U.D. P.B. 60 PGS. 128-130



SUBDIVISION - Citrus Park  
BOOK 74 PAGE 177  
FLOOD ZONE -  
QUAD -  
SE -  
PUD NAME - BOYNTON (P) TRACT

**LEGEND**  
D.E. INDICATES DRAINAGE EASEMENT  
U.E. INDICATES UTILITY EASEMENT  
L.A.E. INDICATES LIMITED ACCESS EASEMENT  
- INDICATES ZERO LOT LINE SIDE  
S.B. INDICATES SOUTHERN BELL  
U.E. INDICATES UTILITY EASEMENT  
P.R.M. INDICATES PERMANENT REFERENCE MONUMENT



DEEDED TO THE CITY OF BOYNTON BEACH

SCHOOL BOARD OF PALM BEACH COUNTY FLORIDA  
O.R.B. 5496 PGS. 1991, 1992

BOYNTON SUNNY SOUTH PARTNERS  
DB. 4420 PGS. 1563, 1564  
ACREAGE

F. R. S. & ASSOCIATES LAND SURVEYORS 901 NORTHEAST PARKWAY SUITE 301 WEST PALM BEACH, FL 33407 407-478-7178		APPROVED BY: _____	PLOTTED BY: P. B. MOHALES
SCALE: 1"=60'	DATE: _____	JOB NO. _____	DRAWING NO. _____
PLAT OF CITRUS PARK A P. U. D. IN 2 SHEETS SHEET NO. 2		89-S-42	