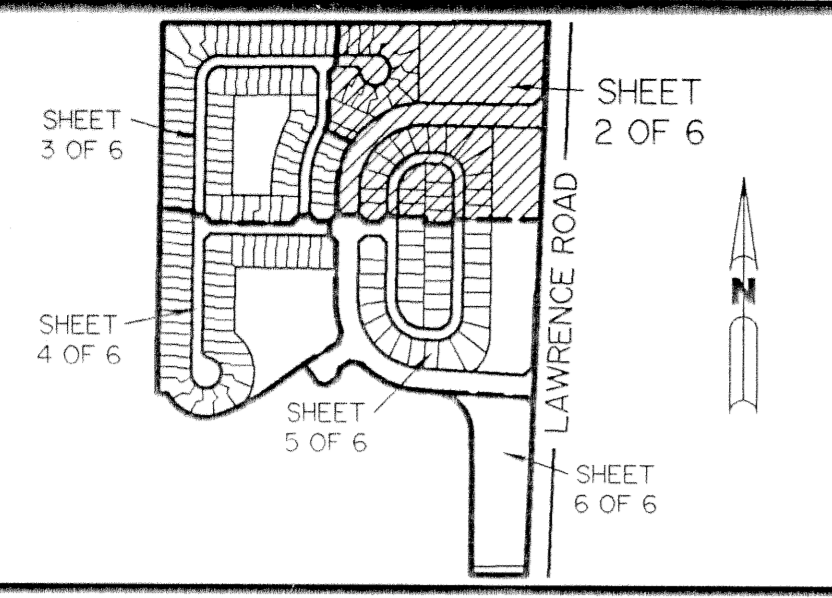


# NAUTICA P.U.D. - PLAT ONE

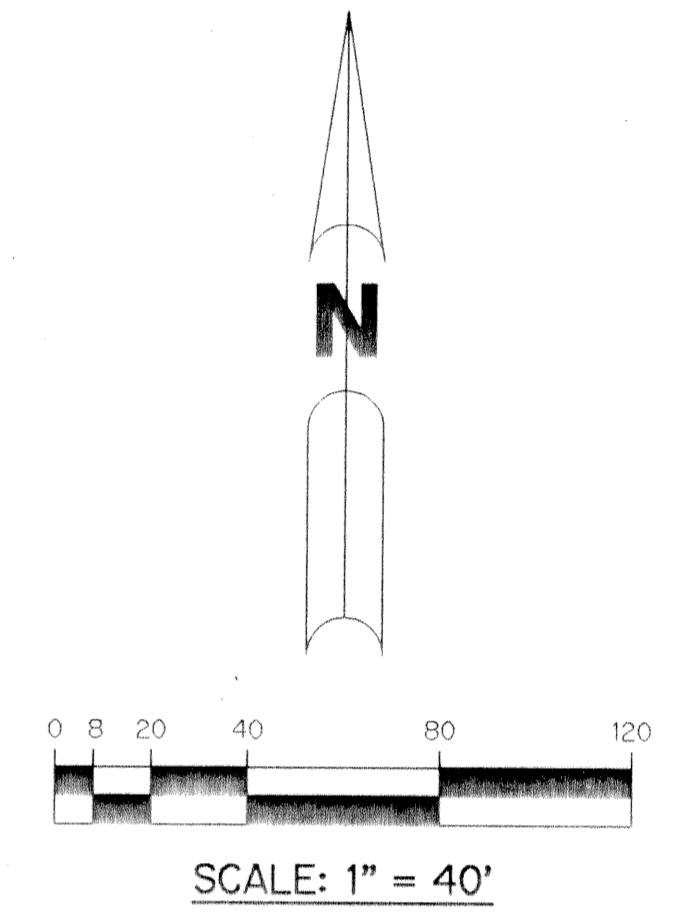
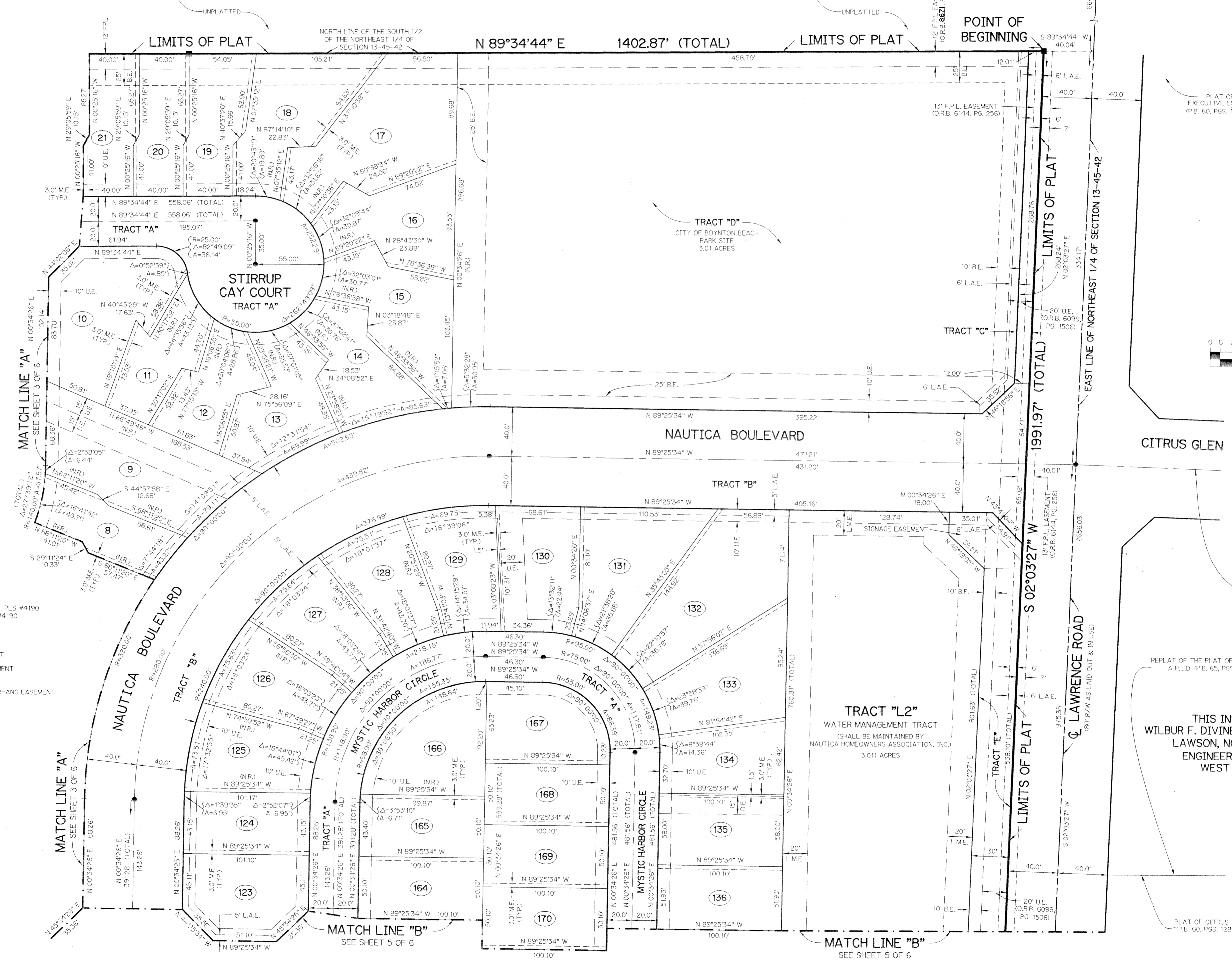
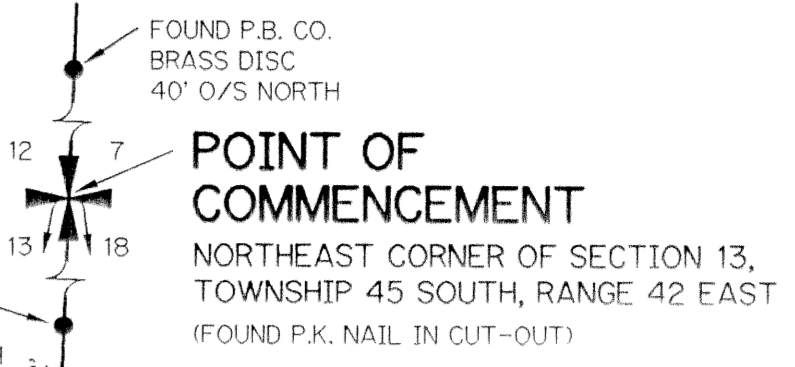
A PARCEL OF LAND LYING IN SECTION 13,  
TOWNSHIP 45 SOUTH, RANGE 42 EAST, CITY OF BOYNTON BEACH,  
PALM BEACH COUNTY, FLORIDA.

SHEET 2 OF 6 JANUARY, 1995

A PLANNED UNIT DEVELOPMENT



KEY MAP  
N.T.S.



- LEGEND:**
- - PERMANENT REFERENCE MONUMENT, PLS #4190
  - - PERMANENT CONTROL POINT, PLS #4190
  - Δ - DELTA ANGLE
  - A - ARC LENGTH
  - RE - BUFFER EASEMENT
  - DE - DRAINAGE EASEMENT
  - F.P.L. - FLORIDA POWER & LIGHT EASEMENT
  - L.A.E. - LIMITED ACCESS EASEMENT
  - L.M.A.E. - LAKE MAINTENANCE ACCESS EASEMENT
  - L.M.E. - LAKE MAINTENANCE EASEMENT
  - L.W.D.D. - LAKE WORTH DRAINAGE DISTRICT
  - ME - DRAINAGE, MAINTENANCE AND OVERHANG EASEMENT
  - NR - NOT RADIAL
  - N.T.S. - NOT TO SCALE
  - OR.B. - OFFICIAL RECORD BOOK
  - P.B. - PLAT BOOK
  - P.G.S. - PAGES
  - P.L.S. - PROFESSIONAL LAND SURVEYOR
  - R - RADIUS
  - R/W - RIGHT-OF-WAY
  - S.T. - SURVEY TIE
  - U.E. - UTILITY EASEMENT

SUBDIVISION - Nautica P.U.D.  
 BOOK - 74  
 FLOOD MAP -  
 QUAD -  
 SE -  
 PUD NAME - C | Boynton Bch.  
 PAGE - 171  
 FLOOD MAP -  
 ZONING -  
 ZIP CODE -

**TRACT "L2"**  
 WATER MANAGEMENT TRACT  
 (SHALL BE MAINTAINED BY  
 NAUTICA HOMEOWNERS ASSOCIATION, INC.)  
 3.011 ACRES

THIS INSTRUMENT PREPARED BY  
 WILBUR F. DIVINE, P.L.S. 4190, STATE OF FLORIDA  
 LAWSON, NOBLE AND ASSOCIATES, INC.  
 ENGINEERS PLANNERS SURVEYORS  
 WEST PALM BEACH, FLORIDA