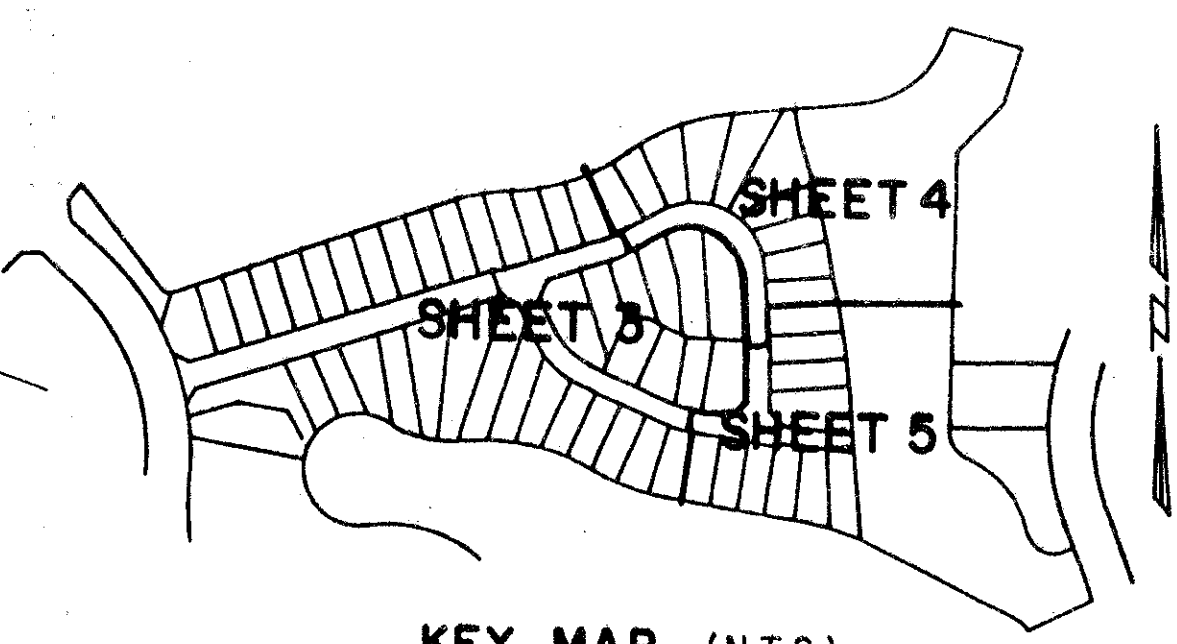


ABERDEEN - PLAT NO. 7

A PLANNED UNIT DEVELOPMENT

LYING IN SECTIONS 15 AND 16, TOWNSHIP 45 SOUTH, RANGE 42 EAST,
BEING A REPLAT OF A PORTION OF ABERDEEN - PLAT NO. 2 AS RECORDED IN PLAT BOOK 55, PAGES 11 THRU 22, OF THE PUBLIC RECORDS OF PALM BEACH COUNTY, FLORIDA
SHEET 3 OF 5

0270-009



STATE OF FLORIDA
COUNTY OF PALM BEACH
This Plat was filed for record at _____
M. this _____ day of _____ 19____
and duly recorded in Plat Book No. _____
on Page _____
Dorothy H. Wilken, Clerk of the Circuit Court
By _____ D.C.

