

RIVERWALK - PLAT ONE

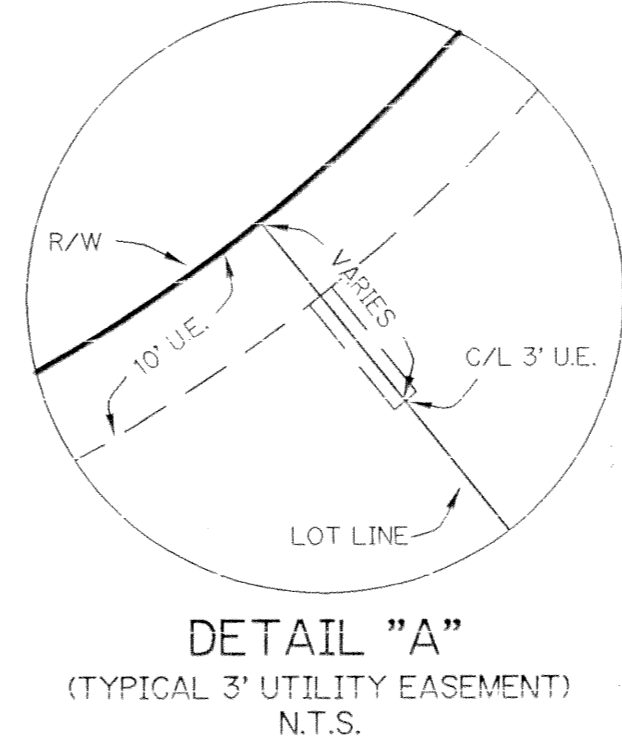
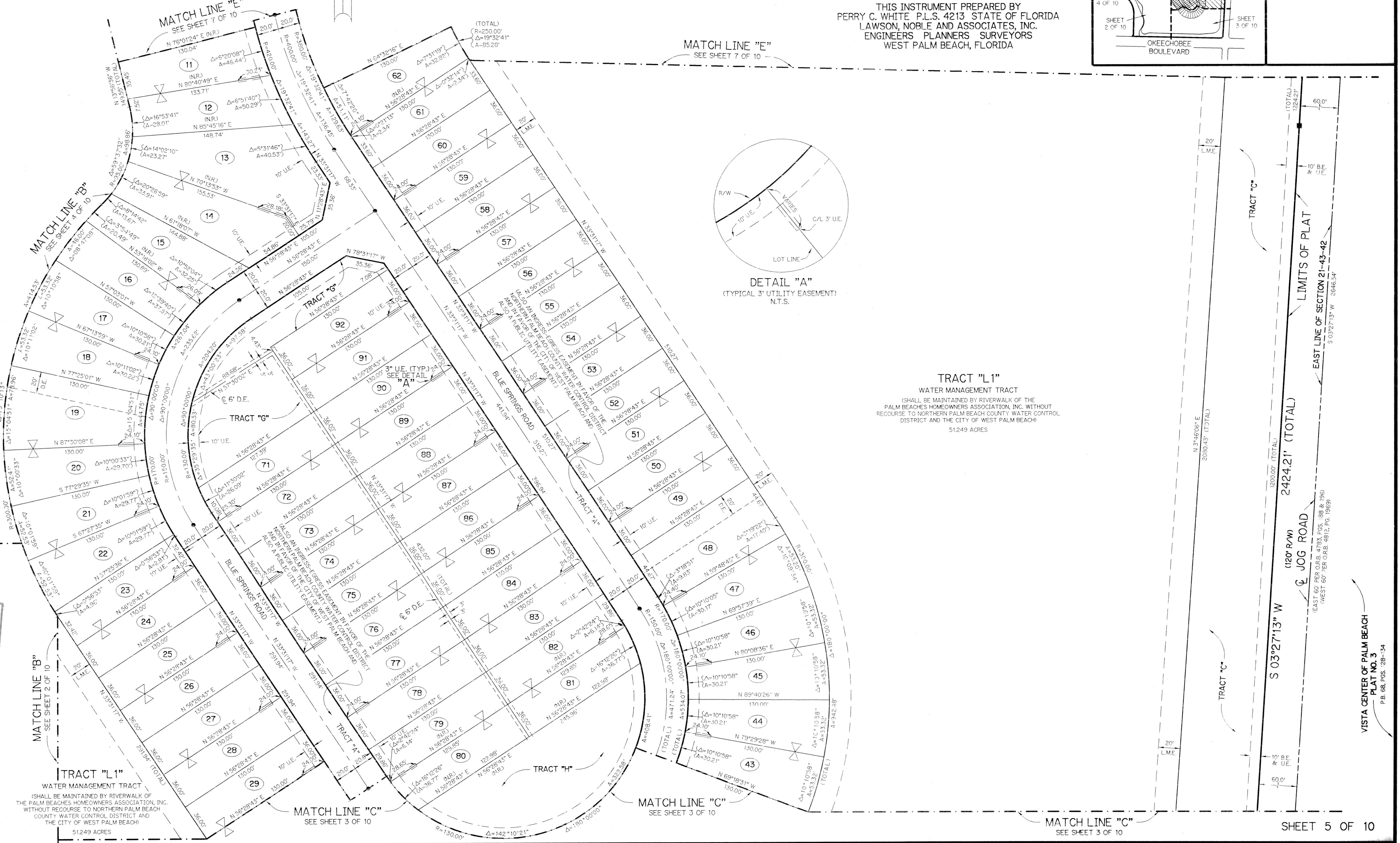
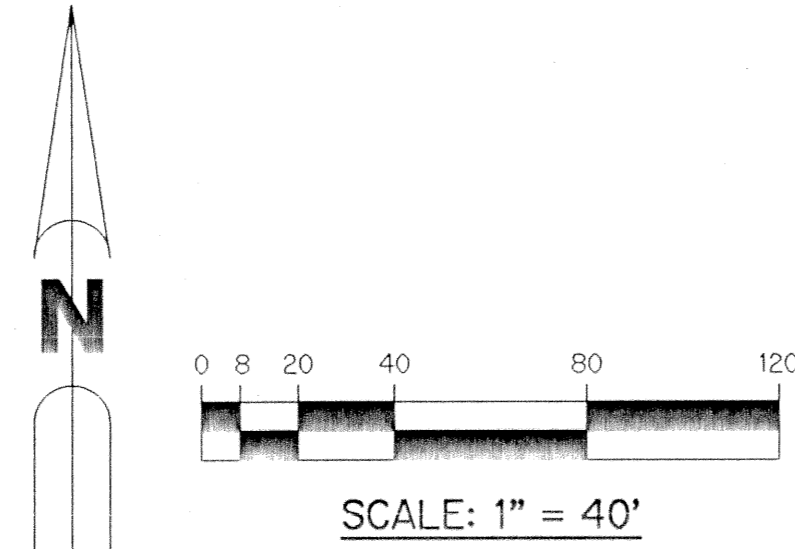
A PARCEL OF LAND LYING IN SECTION 21, TOWNSHIP 43 SOUTH,
RANGE 42 EAST, CITY OF WEST PALM BEACH,
PALM BEACH COUNTY, FLORIDA.

SHEET 5 OF 10 JANUARY, 1995

THIS INSTRUMENT PREPARED BY
PERRY C. WHITE P.L.S. 4213 STATE OF FLORIDA
LAWSON, NOBLE AND ASSOCIATES, INC.
ENGINEERS PLANNERS SURVEYORS
WEST PALM BEACH, FLORIDA

LEGEND:

- - PERMANENT REFERENCE MONUMENT, P.L.S. #4213
- △ - PERMANENT CONTROL POINT, P.L.S. #4213
- ∠ - DELTA ANGLE
- A - ARC LENGTH
- B.E. - BUFFER EASEMENT
- D.E. - DRAINAGE EASEMENT
- L.M.A.E. - LAKE MAINTENANCE ACCESS EASEMENT
- L.M.E. - LAKE MAINTENANCE EASEMENT
- L.W.D.D. - LAKE WORTH DRAINAGE DISTRICT
- N.R. - NOT RADIAL
- N.T.S. - NOT TO SCALE
- OR.B. - OFFICIAL RECORD BOOK
- P.B. - PLAT BOOK
- R.E. - RIVERWALK EASEMENT
- PGS. - PAGES
- P.L.S. - PROFESSIONAL LAND SURVEYOR
- R - RADIUS
- R/W - RIGHT-OF-WAY
- S.T. - SURVEY TIE
- U.E. - UTILITY EASEMENT
- ∩ - INDICATES ZERO LOT LINE
- ∩ - INDICATES COMMON LOT LINE



TRACT "L1"
WATER MANAGEMENT TRACT
(SHALL BE MAINTAINED BY RIVERWALK OF THE
PALM BEACHES HOMEOWNERS ASSOCIATION, INC. WITHOUT
RECOURSE TO NORTHERN PALM BEACH COUNTY WATER CONTROL
DISTRICT AND THE CITY OF WEST PALM BEACH)
51.249 ACRES

SUBDIVISION *Riverwalk - Plat One*
BOOK 74 PAGE 141
FLOOD ZONE FLOOD MAP
SE ZONING
PUD NAME *CLUBS* ZIP CODE
VISTA CENTER OF PALM BEACH
PLAT NO. 3
P.B. 68, PGS. 28-34