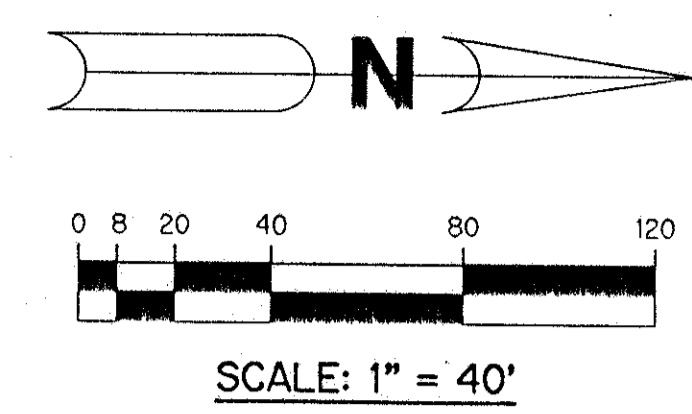


KEY MAP N.T.S.



- LEGEND:**
- - PERMANENT REFERENCE MONUMENT, PLS #4213
 - - PERMANENT CONTROL POINT, PLS #4213
 - Δ - DELTA ANGLE
 - A - ARC LENGTH
 - S.E. - BUFFER EASEMENT
 - D.E. - DRAINAGE EASEMENT
 - L.M.E. - LAKE MAINTENANCE EASEMENT
 - N.R. - NOT RADIAL
 - N.T.S. - NOT TO SCALE
 - O.R.B. - OFFICIAL RECORD BOOK
 - P.B. - PLAT BOOK
 - P.G.S. - PAGES
 - P.L.S. - PROFESSIONAL LAND SURVEYOR
 - R - RADIUS
 - R/W - RIGHT-OF-WAY
 - U.E. - UTILITY EASEMENT
 - N = 1000.000
 - E = 1000.000 - STATE PLANE COORDINATES

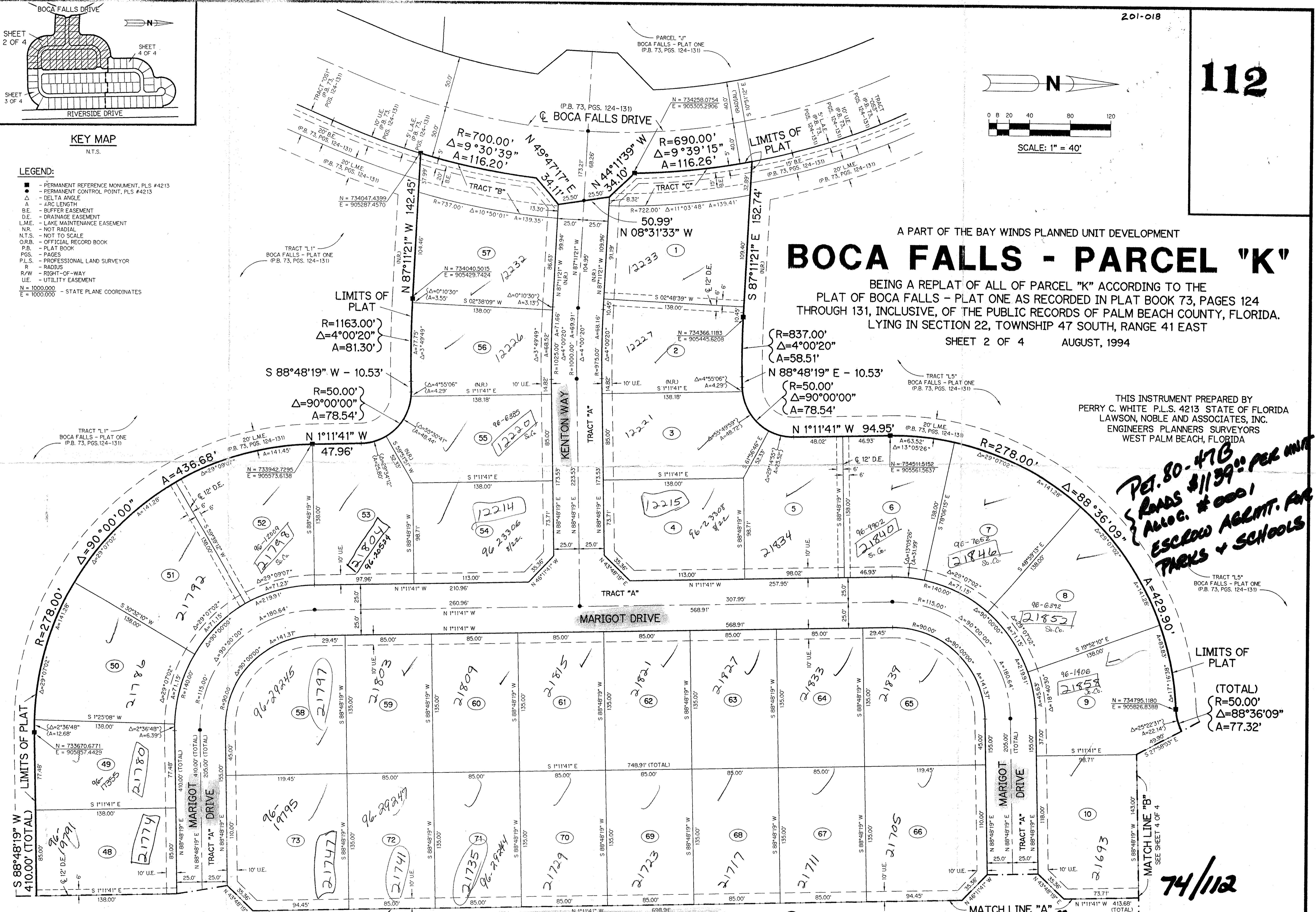
BOCA FALLS - PARCEL "K"

BEING A REPLAT OF ALL OF PARCEL "K" ACCORDING TO THE PLAT OF BOCA FALLS - PLAT ONE AS RECORDED IN PLAT BOOK 73, PAGES 124 THROUGH 131, INCLUSIVE, OF THE PUBLIC RECORDS OF PALM BEACH COUNTY, FLORIDA, LYING IN SECTION 22, TOWNSHIP 47 SOUTH, RANGE 41 EAST

SHEET 2 OF 4 AUGUST, 1994

THIS INSTRUMENT PREPARED BY
 PERRY C. WHITE P.L.S. 4213 STATE OF FLORIDA
 LAWSON, NOBLE AND ASSOCIATES, INC.
 ENGINEERS PLANNERS SURVEYORS
 WEST PALM BEACH, FLORIDA

*PER. 80-47B
 ROADS \$1139.00 PER ACRE
 ALLOC. # 0001
 ESCROW AGMT. FOR
 PARKS + SCHOOLS*



(TOTAL)
 R=50.00'
 Δ=88°36'09"
 A=77.32'

74/112

TAZ-778

SUBDIVISION * Boca Falls - Parcel K
 BOOK 7A PAGE 12
 FLOOD ZONE AO-1 FLOOD MAP # 1008
 QUAD # 69 ZONING RT
 SE 80-47 ZIP CODE 33425
 PHD NAME Bay Winds PUD