

STATE OF FLORIDA
 COUNTY OF PALM BEACH

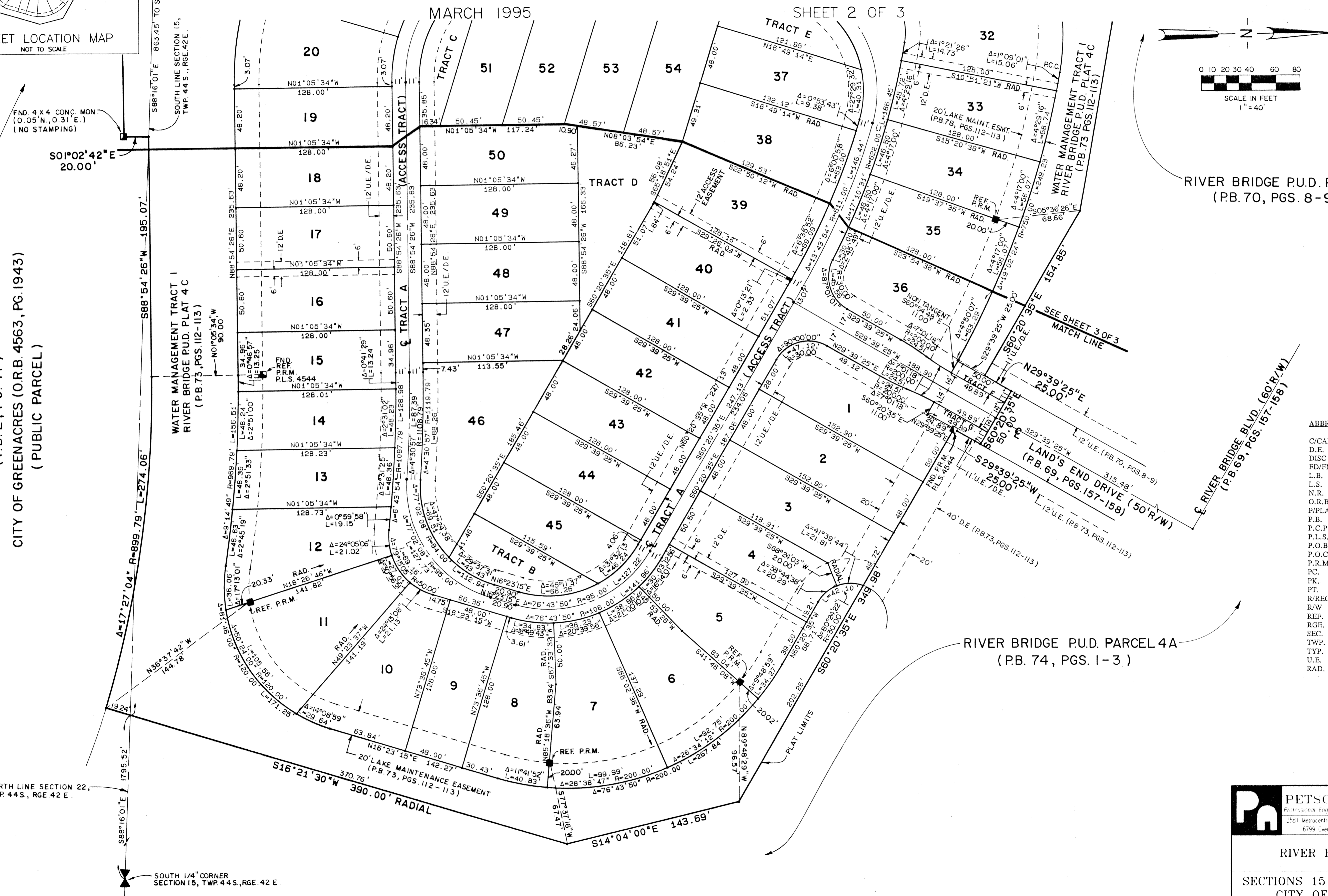
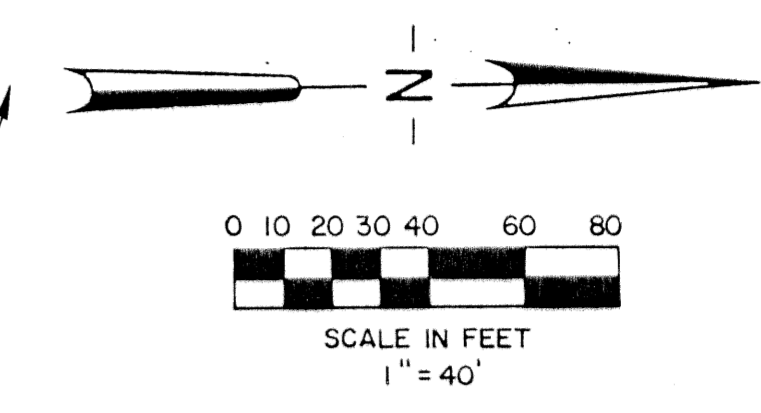
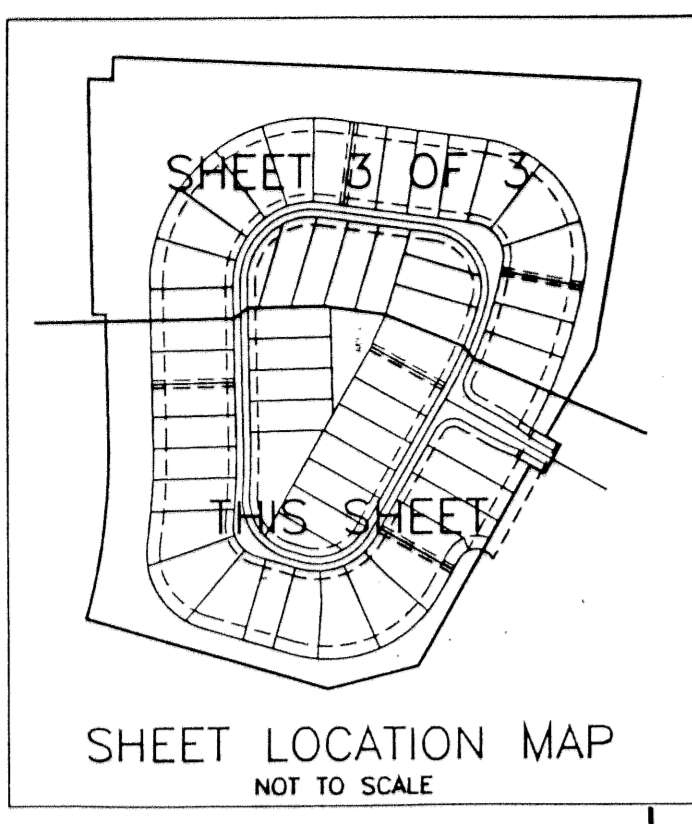
This plot was filed for record at _____ this _____ day of _____, 1995, and duly recorded in Plot Book No. _____ on Pages _____ thru _____

DOROTHY H. WILKIN
 Clerk Circuit Court

By: _____

RIVER BRIDGE P.U.D. PARCEL 3D

BEING A REPLAT OF PARCEL 3D
 RIVER BRIDGE P.U.D. PLAT 4C (P.B. 73, PGS. 112 - 113)
 OF THE PUBLIC RECORDS OF PALM BEACH COUNTY, FLORIDA
 LYING IN SECTIONS 15 AND 22, TOWNSHIP 44 SOUTH, RANGE 42 EAST,
 CITY OF GREENACRES, PALM BEACH COUNTY, FLORIDA.



PALM BEACH FARMS COMPANY PLAT No. 3
 (P.B. 2, PG. 47)
 CITY OF GREENACRES (O.R.B. 4563, PG. 1943)
 (PUBLIC PARCEL)

ABBREVIATION LEGEND

C/CALC	CALCULATED DIMENSION
D.E.	DRAINAGE EASEMENT
DISC	BRASS DISC
FD/END	FOUND
L.B.	LICENSED BUSINESS
L.S.	LAND SURVEYOR
N.R.	NON-RADIAL
O.R.B.	OFFICIAL RECORD BOOK
P/PLAT	PREVIOUSLY PLATTED
P.B.	PLAT BOOK
P.C.P.	PERMANENT CONTROL POINT
P.L.S.	PROFESSIONAL LAND SURVEYOR
P.O.B.	POINT OF BEGINNING
P.O.C.	POINT OF COMMENCEMENT
P.R.M.	PERMANENT REFERENCE MONUMENT
PC.	POINT OF CURVATURE
PK.	PK BRAND NAIL
PT.	POINT OF TANGENCY
R/REC	RECORD DATA
R/W	RIGHT-OF-WAY
REF.	REFERENCE
RGE.	RANGE
SEC.	SECTION
TWP.	TOWNSHIP
TYP.	TYPICAL
U.E.	UTILITY EASEMENT
RAD.	RADIAL LINE

SUBDIVISION - River Bridge P.U.D.
 BOOK 74 Parcel 3D
 PAGE 104
 FLOOR PLANS - FLOOD MAP # -
 QUANTITY - ZONING -
 SE - ZIP CODE -
 PUD NAME - C/Greenacres.

PETSCH & ASSOCIATES, INC.
 Professional Engineers - Land Surveyors - Development Consultants - Testing
 2561 Metropolitan Boulevard, Suite 6, West Palm Beach, Florida 33407 (407) 644-1111
 6799 Overseas Highway, Suite 7, Marathon, Florida 33050 (305) 743-5788

RIVER BRIDGE P.U.D. PARCEL 3D
 SECTIONS 15 & 22, TWP. 44S., RGE. 42E.
 CITY OF GREENACRES, FLORIDA

DESIGNED BY	DATE	SCALE	JOB NUMBER	SHEET
D.W. MEH	NOV. 1994	1" = 40'	94-026	2 OF 3
DESIGNED BY	CHECKED BY			
	R. HAGLER			