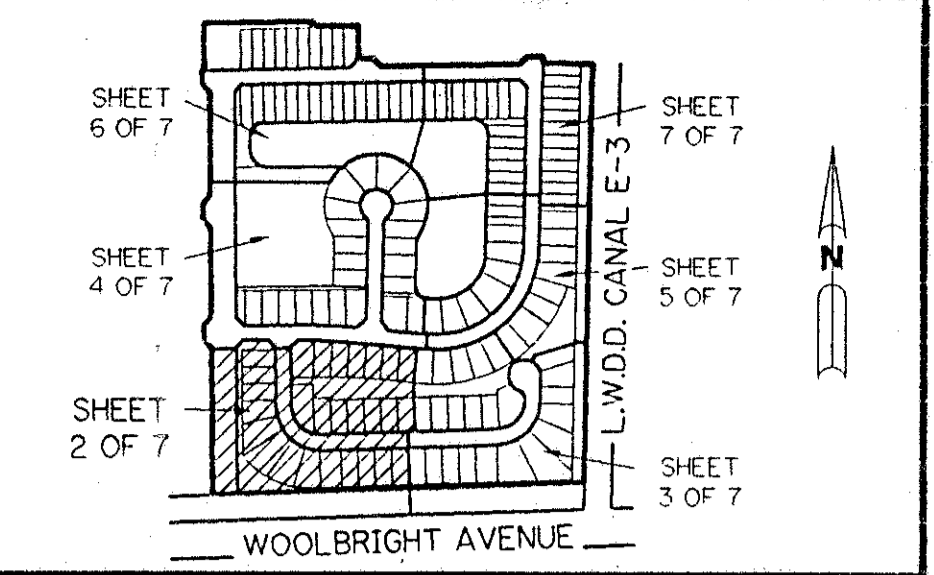
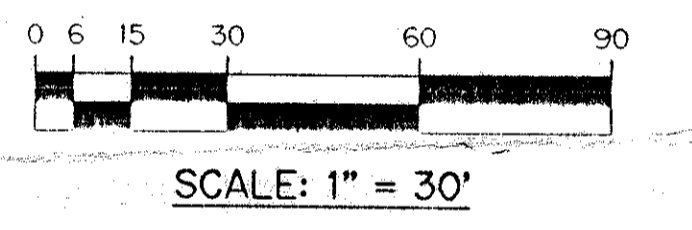
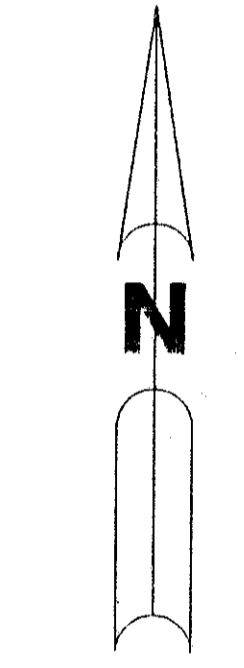


# MAJESTIC ISLES - PLAT ONE

BEING A REPLAT OF A PORTION OF TRACTS 33, 34, 35, 36, 37, 52, 53, AND 54 AND ASSOCIATED ABANDONED RIGHT-OF-WAY ACCORDING TO THE PLAT OF THE SUBDIVISION OF SECTION 26-45S-42E, AS RECORDED IN PLAT BOOK 6, PAGE 26, PUBLIC RECORDS OF PALM BEACH COUNTY, FLORIDA. LYING IN SECTION 26, TOWNSHIP 45 SOUTH, RANGE 42 EAST.

# 87

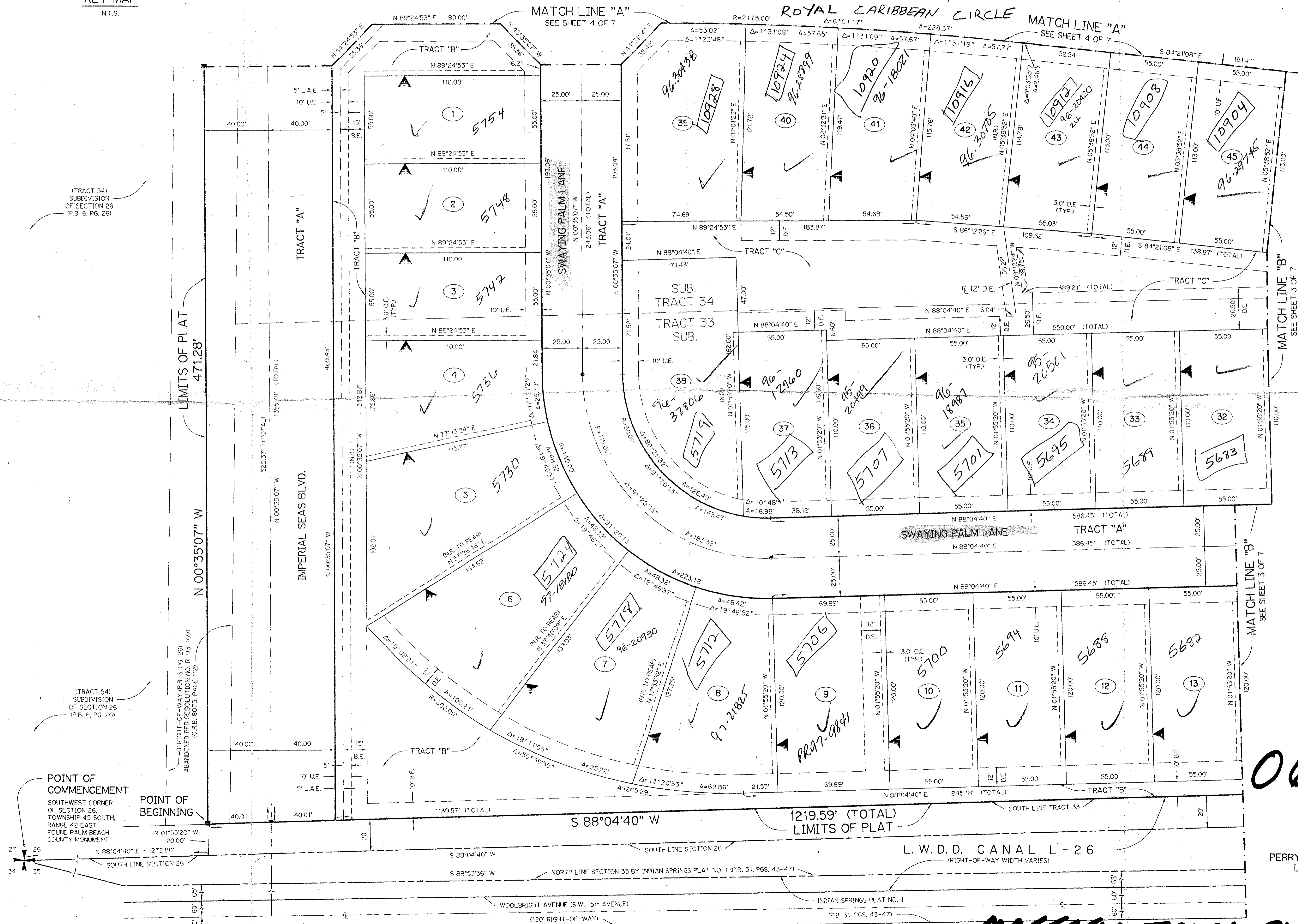
**PET. 88-139B**  
**NO SCHOOLS**  
**RESTRICTIVE**  
**COVENANT**  
**5/3/3/K**



KEY MAP  
N.T.S.

SHEET 2 OF 7 APRIL, 1994

ROYAL CARIBBEAN CIRCLE



**LEGEND:**

- - PERMANENT REFERENCE MONUMENT, P.L.S. #4213
- - PERMANENT CONTROL POINT, P.L.S. #4213
- Δ - DELTA ANGLE
- A - ARC LENGTH
- B.E. - BUFFER EASEMENT
- D.E. - DRAINAGE EASEMENT
- L.A.E. - LIMITED ACCESS EASEMENT
- L.M.E. - LAKE MAINTENANCE EASEMENT
- L.W.D.D. - LAKE WORTH DRAINAGE DISTRICT
- N.R. - NOT RADIAL
- N.T.S. - NOT TO SCALE
- O.E. - OVERHANG EASEMENT
- O.R.B. - OFFICIAL RECORD BOOK
- P.B. - PLAT BOOK
- P.G.S. - PAGES
- P.L.S. - PROFESSIONAL LAND SURVEYOR
- SUB. - SUBDIVISION OF SECTION 26 (P.B. 6, PG. 26)
- R - RADIUS
- TYP. - TYPICAL
- U.E. - UTILITY EASEMENT
- ▲ - INDICATES ZERO LOT LINE
- ⌘ - INDICATES COMMON LOT LINE

**0627-001**  
**74/87**

THIS INSTRUMENT PREPARED BY  
PERRY C. WHITE P.L.S. 4213 STATE OF FLORIDA  
LAWSON, NOBLE AND ASSOCIATES, INC.  
ENGINEERS PLANNERS SURVEYORS  
WEST PALM BEACH, FLORIDA

SUBDIVISION - Majestic Isles  
BOOK 74 PAGE 87  
FLOOD ZONE 0  
COUNTY 35  
SE 88-137 ZIP CODE 33437  
PUD NAME same  
20/45/42

TAZ-448

**MAJESTIC ISLES - PLAT ONE**