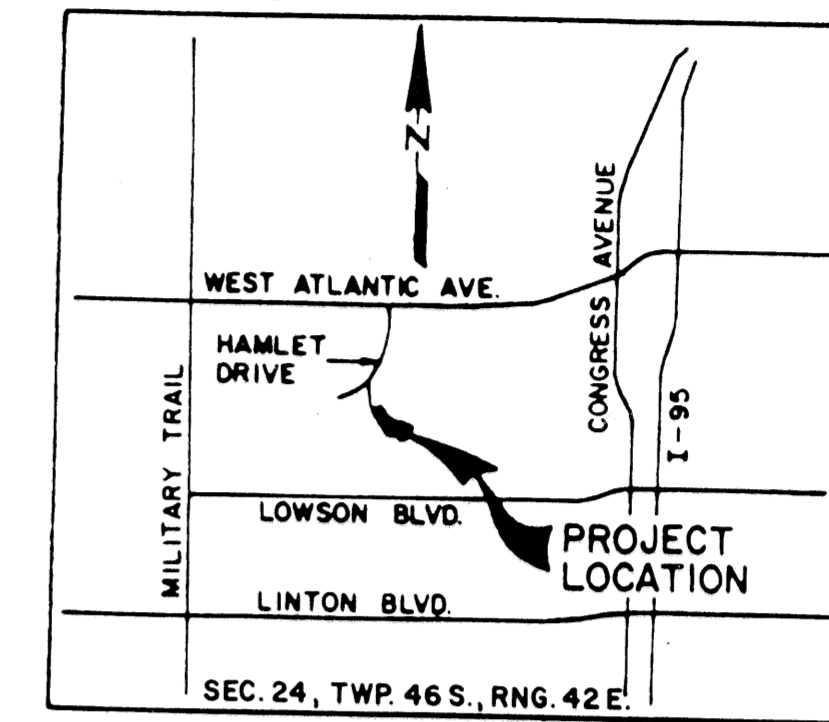


THE ENCLAVE AT THE HAMLET

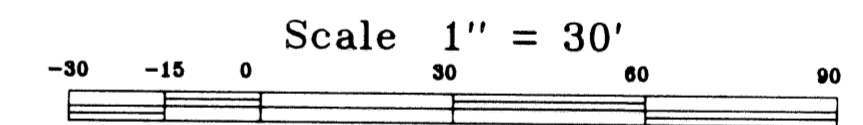
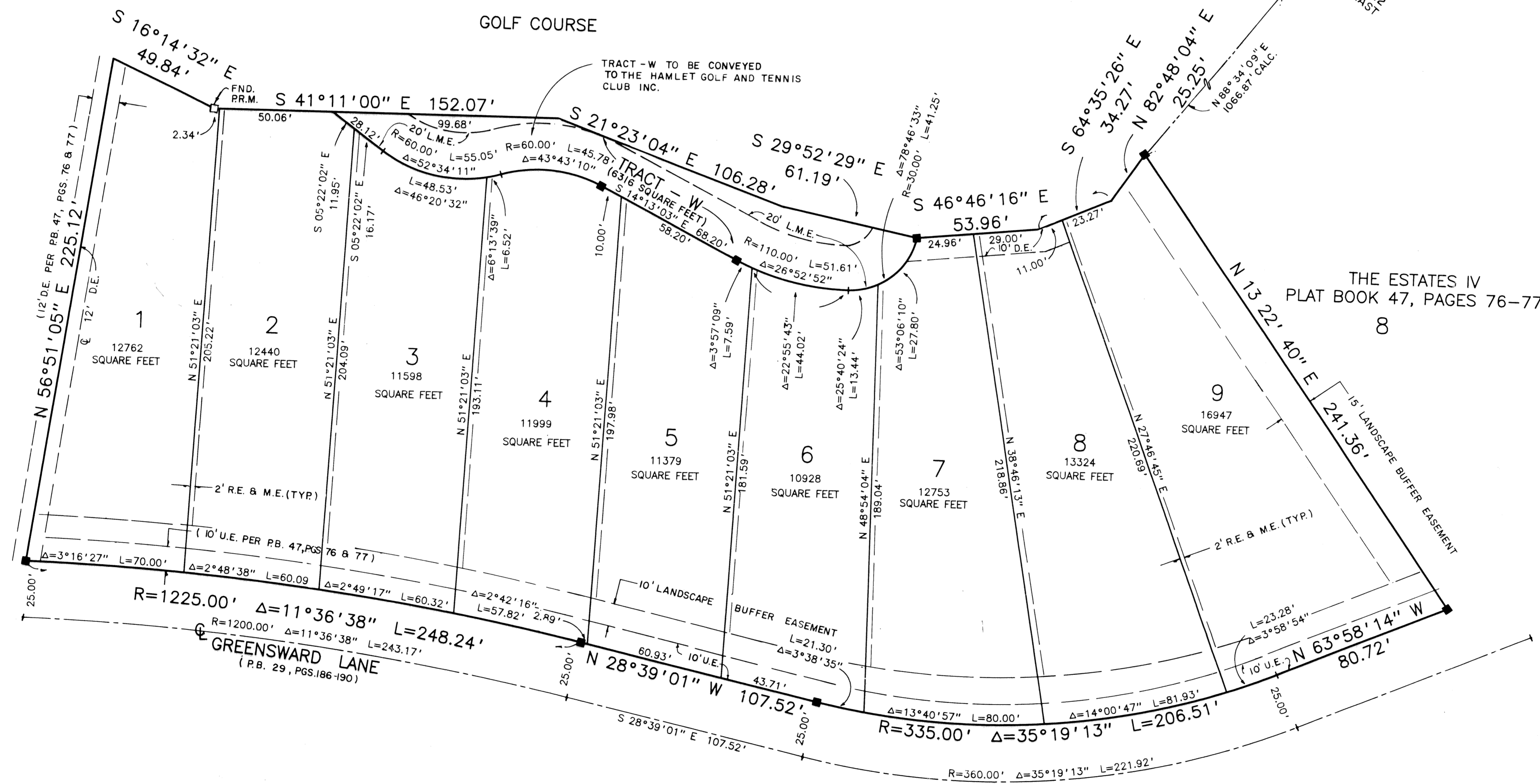
A REPLAT OF LOTS 3, 4, 5, 6, AND 7 OF THE ESTATES IV AS RECORDED IN PLAT BOOK 47, PAGES 76 AND 77, OF THE PUBLIC RECORDS OF PALM BEACH COUNTY, FLORIDA, LYING IN SECTION 24, TOWNSHIP 46 SOUTH, RANGE 42, EAST, CITY OF DELRAY BEACH, PALM BEACH COUNTY, FLORIDA.
SHEET 2 OF 2
JULY 1994

STATE OF FLORIDA
COUNTY OF PALM BEACH ss
This Plat was filed for record at _____
M. this ____ day of _____, 19____
and duly recorded in Plat Book No. _____
on Page _____
Dorothy H. Wilken, Clerk of the Circuit Court
By _____ D.C.



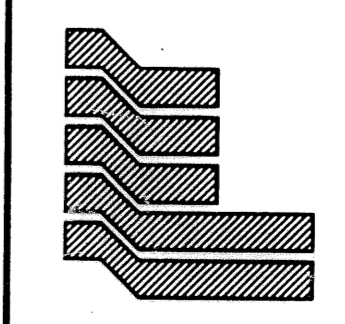
LOCATION MAP
N.T.S.

THE ESTATES IV
PLAT BOOK 47, PAGES 76-77



GREENSWARD VILLAGE SUBDIVISION
PLAT BOOK 29, PAGES 186-190

The Enclave at
The Hamlet
SUBDIVISION # The Hamlet
BOOK 73 PAGE 188
FLOOD ZONE - FLOOD HAZARD -
QUAD # - ZONING -
SE - EASEMENT -
2/24/94 C/DeRay Bch



Landmark Surveying & Mapping Inc.
1850 FOREST HILL BOULEVARD
PH. (407)433-5405 SUITE 100 W.P.B. FLORIDA

**THE ENCLAVE AT
THE HAMLET**