

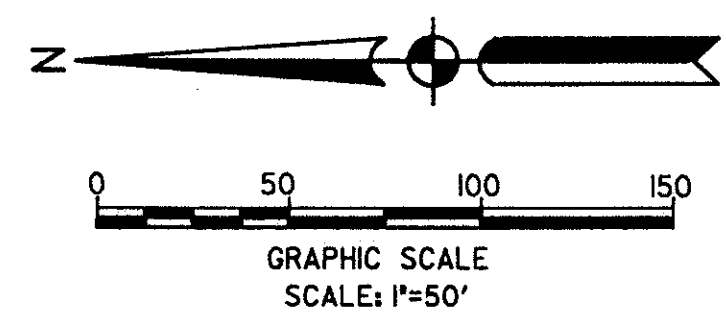
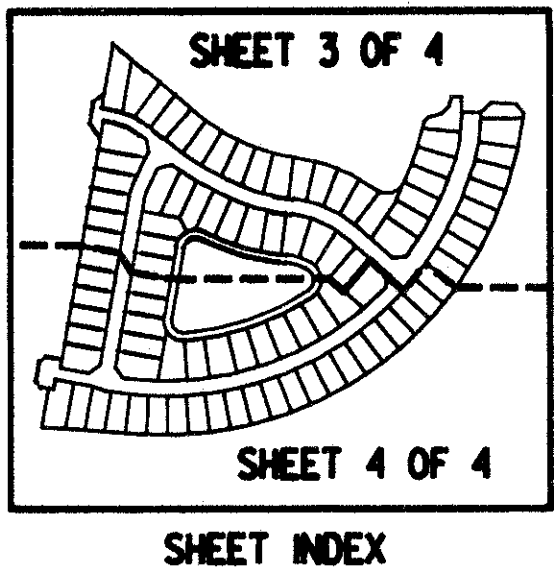
# WINSTON TRAILS PARCEL 9 A

# 185

PART OF A P.U.D.  
BEING A REPLAT OF A PORTION OF 'WINSTON TRAILS PARCEL NINE' (P.B. 71, PG. 141-145, P.B.C.R.)  
LYING IN SECTION 3, TOWNSHIP 45 SOUTH, RANGE 42 EAST,  
PALM BEACH COUNTY, FLORIDA.

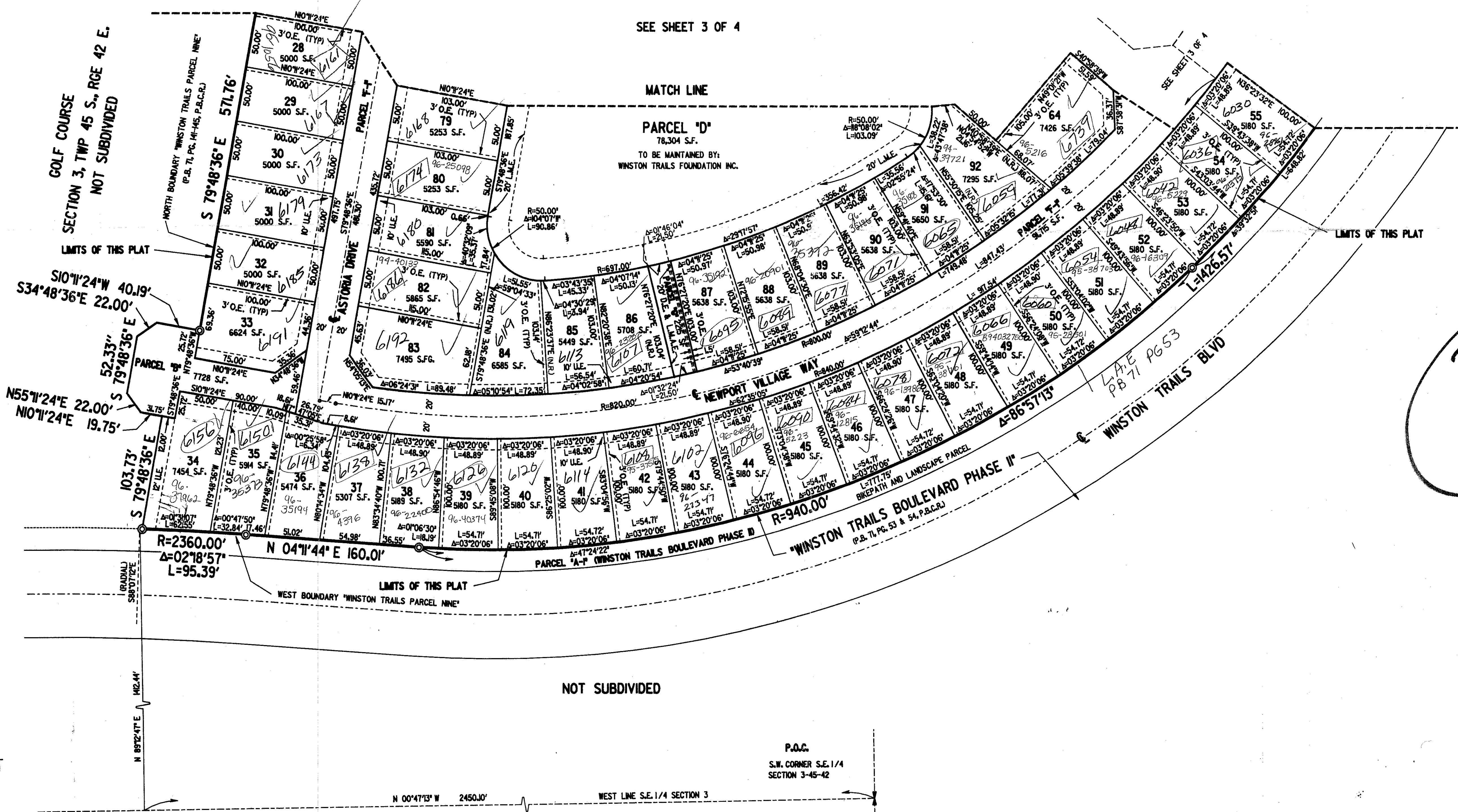
PREPARED BY:  
JON P. WEBER IN THE OFFICES OF  
KEITH AND SCHNARS, P.A.  
ENGINEERS - PLANNERS - SURVEYORS  
6500 NORTH ANDREWS AVENUE  
FORT LAUDERDALE, FLORIDA 33309  
(305) 776-1616  
OCTOBER 1993  
DWG. NO. P2997U-4162UPL6.DGN

STATE OF FLORIDA  
COUNTY OF PALM BEACH  
THIS PLAT WAS FILED FOR RECORD  
AT \_\_\_\_\_ M, THIS \_\_\_\_\_ DAY  
OF \_\_\_\_\_ 1993, AND DULY  
RECORDED IN PLAT BOOK NO. \_\_\_\_\_  
ON PAGES \_\_\_\_\_ THRU \_\_\_\_\_  
DOROTHY H. WILKEN  
CLERK OF THE CIRCUIT COURT  
BY: \_\_\_\_\_ D.C.



### LEGEND

- D.E. - DRAINAGE EASEMENT
- K/S - KEITH AND SCHNARS
- L - ARC LENGTH
- L.A.E. - LIMITED ACCESS EASEMENT
- L.M.A.E. - LAKE MAINTENANCE ACCESS EASEMENT
- L.M.E. - LAKE MAINTENANCE EASEMENT
- N.T.S. - NOT TO SCALE
- N.R. - NOT RADIAL
- O.R.B. - OFFICIAL RECORD BOOK
- O.E. - OVERHANG EASEMENT
- P.B. - PLAT BOOK
- P.B.C.R. - PALM BEACH COUNTY RECORDS
- P.C.P. - PERMANENT CONTROL POINT
- PG. - PAGE
- P.O.B. - POINT OF BEGINNING
- P.O.C. - POINT OF COMMENCEMENT
- P.L.S. - PROFESSIONAL LAND SURVEYOR
- R - RADIUS
- R/W - RIGHT-OF-WAY
- RGE. - RANGE
- SEC. - SECTION
- S.F. - SQUARE FEET
- TWP. - TOWNSHIP
- TYP. - TYPICAL
- U.E. - UTILITY EASEMENT
- Δ - CENTRAL ANGLE



PET. 87-112C  
ALLOE. # 0001  
5/2/2/I

# 0587-010

### NOTICE

THERE MAY BE ADDITIONAL RESTRICTIONS THAT ARE NOT RECORDED ON THIS PLAT THAT MAY BE FOUND IN THE PUBLIC RECORDS OF THIS COUNTY.

# WINSTON TRAILS PARCEL 9A

# 73/185

SUBDIVISION - Winston Trails  
PAGE 185  
BOOK 73 FLOOD MAP # 170A  
FLOOD ZONE B ZONING RT5  
QUAD # 34 ZIP CODE 33463  
SE 87-112  
PUD NAME COMM.

TAZ-437