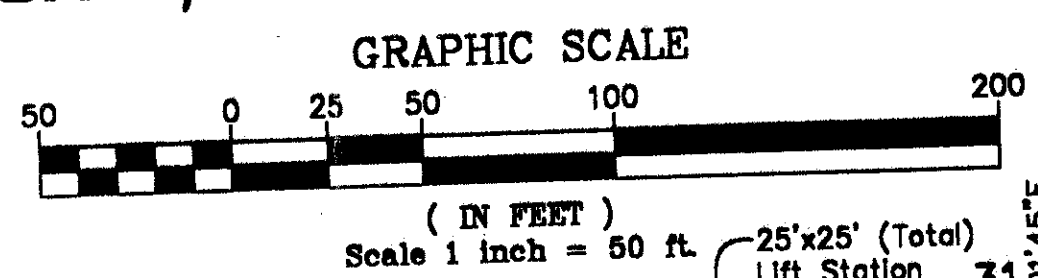


Sterling Bridge

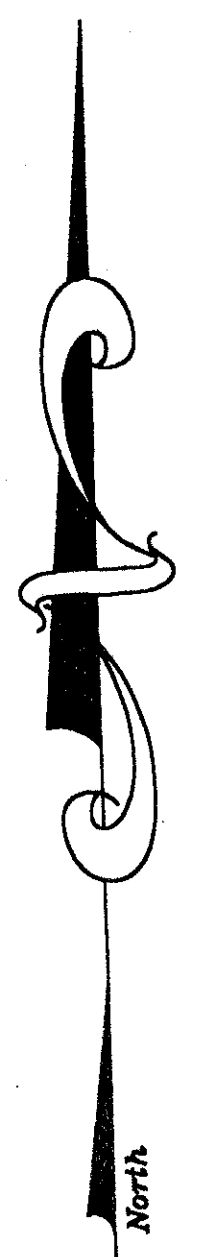
Situate in Sections 29, 30, 31 and 32, Township 47 South, Range 42 East
 Being a replat of all of Tracts 86, 87, 88, and the west half of Tract 89, Block
 80, a portion of Tracts 5, 6, 7, and 8, Block 83, and the adjacent abandoned
 roadways, Palm Beach Farms Company Plat No. 3 as recorded in Plat Book 2,
 Page 45 through 54, inclusive, Public Records of Palm Beach County, Florida

STATE OF FLORIDA SS
 COUNTY OF PALM BEACH
 This plat filed for record at _____
 this _____ day of _____
 19____ and duly recorded in Plat
 Book _____ on page _____
 DOROTHY H. WILKEN, CLERK of the
 Circuit Court.
 By: _____ D.C.

August, 1994

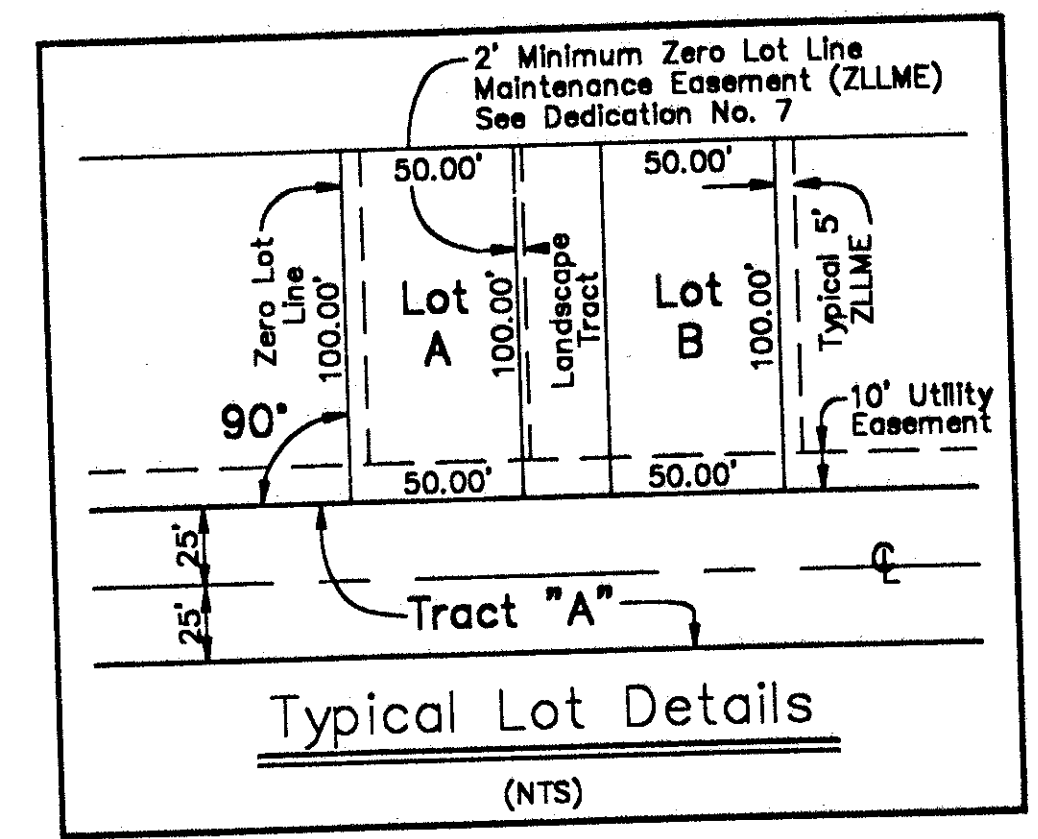


Sheet 4 of 5



Match Line See Sheet 3 of 5

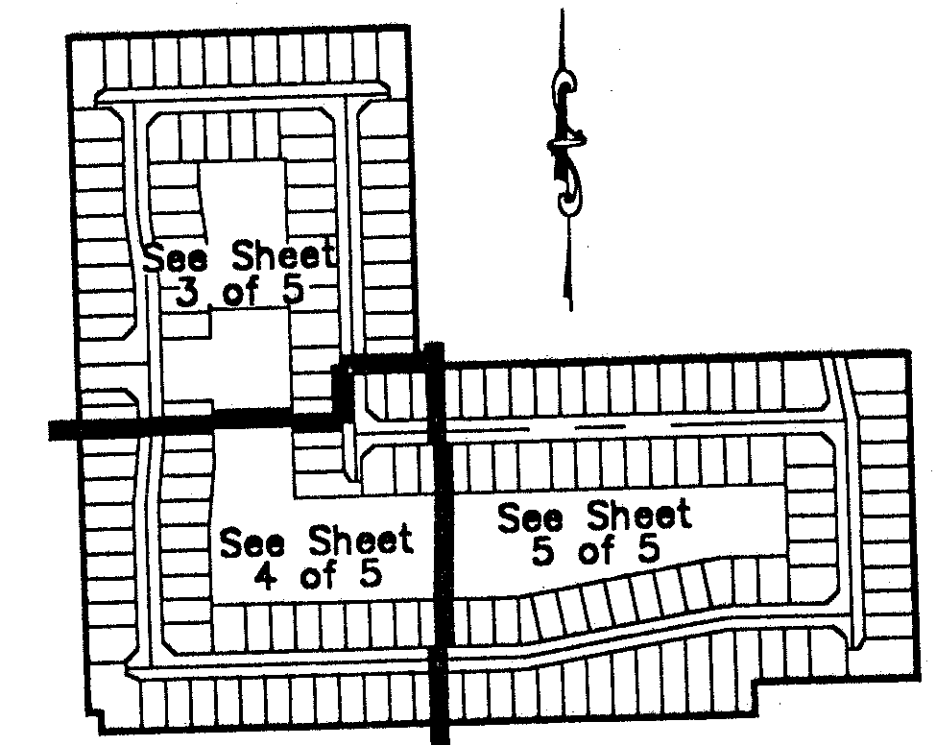
East and North Limits of Plat (Reference Sheet 2 of 5 for Adjoiner Information and Perimeter Boundary Data)



Map Legend :

- = Permanent Control Point
- = Permanent Reference Monument
- = Centerline
- Δ = Central Angle (Delta)
- DE = Drainage Easement
- DT = Driveway Tract
- FL = Feet
- L = Arc Length
- LAE = Limited Access Easement
- LME = Lake Maintenance Easement
- LMAE = Lake Maintenance Access Easement
- ORB = Official Record Book
- PB = Plat Book
- PC = Point of Curvature
- PCP = Permanent Reference Point
- Pg = Page
- PRM = Permanent Reference Monument
- R = Radius Length
- Typ = Typical
- UE = Utility Easement
- ZLLME = Zero Lot Line Maintenance Easement

*PET. 91-45
 ALLOC. #0001
 5/3/3/M*



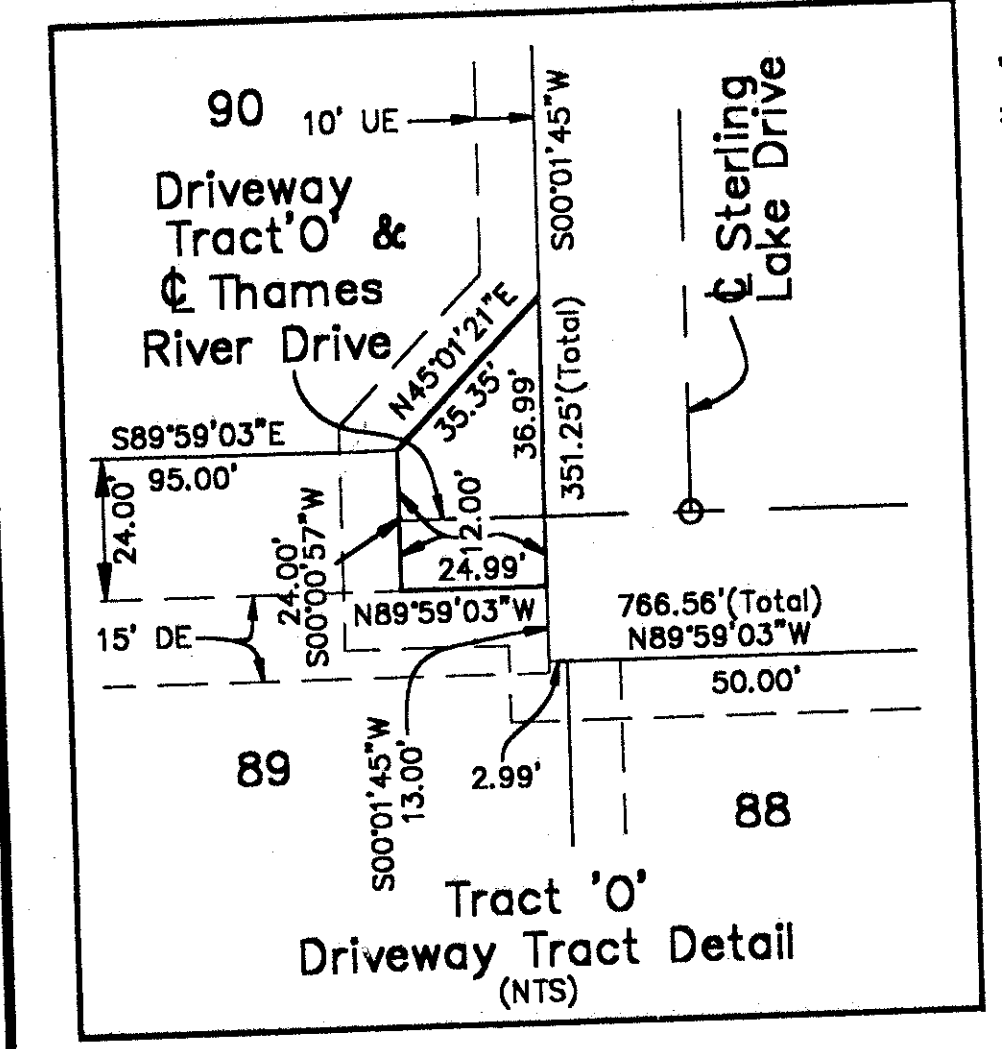
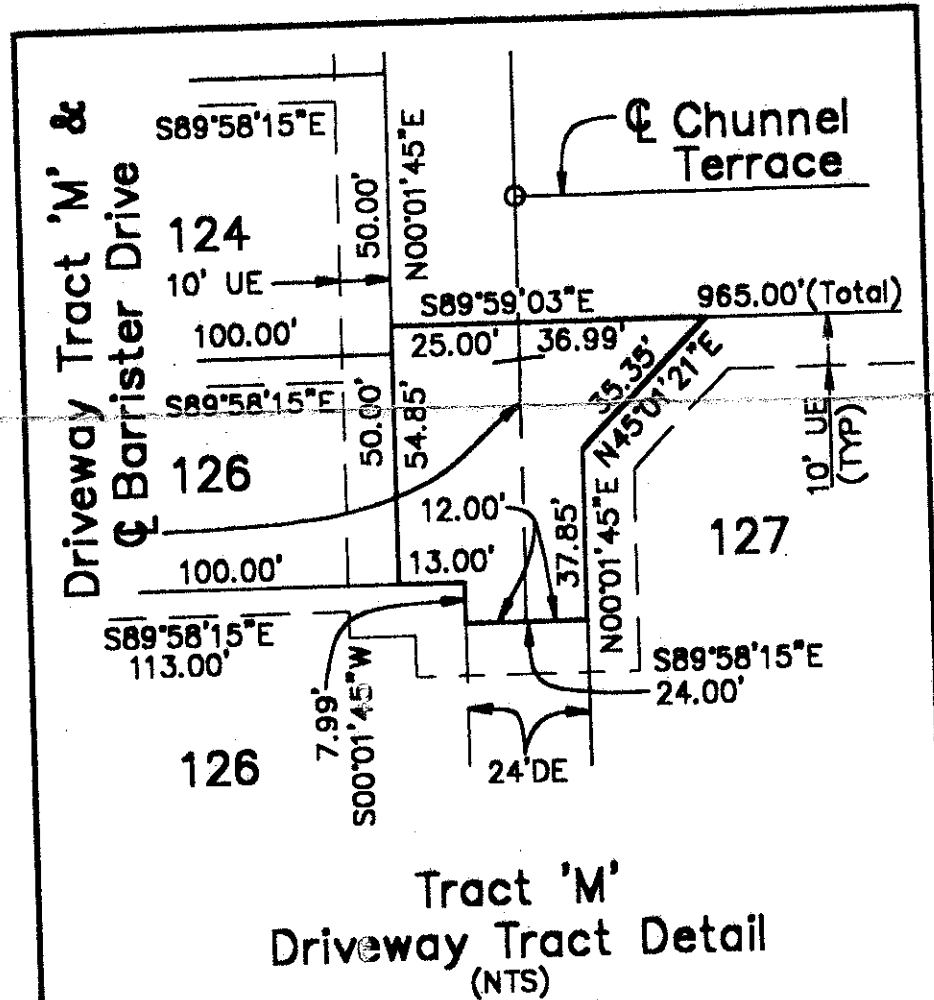
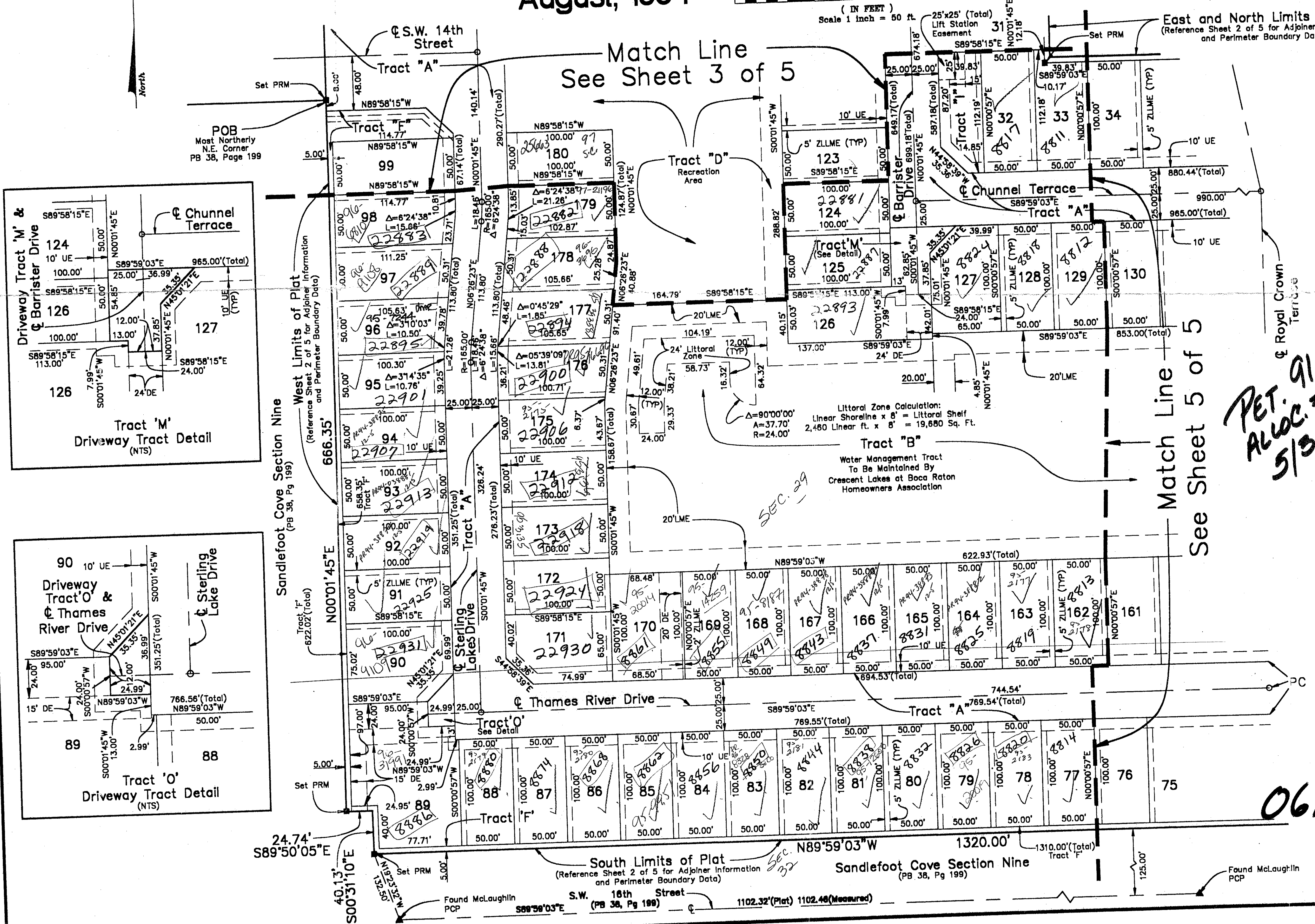
Sheet Index Map N.T.S.

0616-002

73/166

Atlantic - Caribbean Mapping, Inc.
 PROFESSIONAL LAND SURVEYORS AND MAPPERS
 357 Liana Drive
 West Palm Beach, Florida 33415
 (407) 687-5898 - Fax (407) 471-8752

Project No. 93445 Dwg No. 445_P004 Plat of Sterling Bridge



SUBDIVISION * Sterling Bridge
 BOOK 73 PAGE 166
 FLOOD MAP #210B
 ZONING RS
 QUAD # 54
 SE 71-45
 PLD NAME SLMS
 09/22/94

South Limits of Plat (Reference Sheet 2 of 5 for Adjoiner Information and Perimeter Boundary Data)

Sandfoot Cove Section Nine (PB 38, Pg 199)

Found McLaughlin PCP

TAB 789