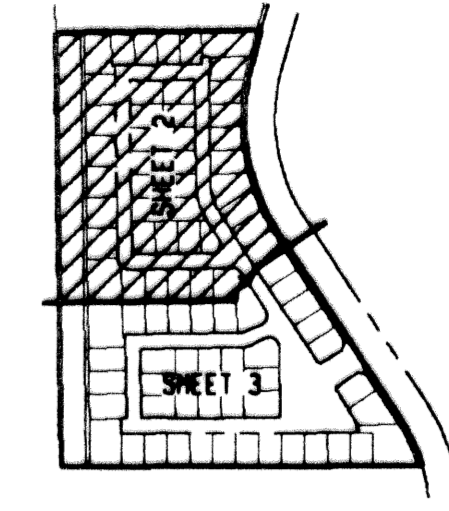


# MAYFAIR AT WOODFIELD COUNTRY CLUB

IN PART OF SECTION 4, TOWNSHIP 47 SOUTH, RANGE 42 EAST  
CITY OF BOCA RATON, PALM BEACH COUNTY, FLORIDA  
SHEET NO. 2 OF 3

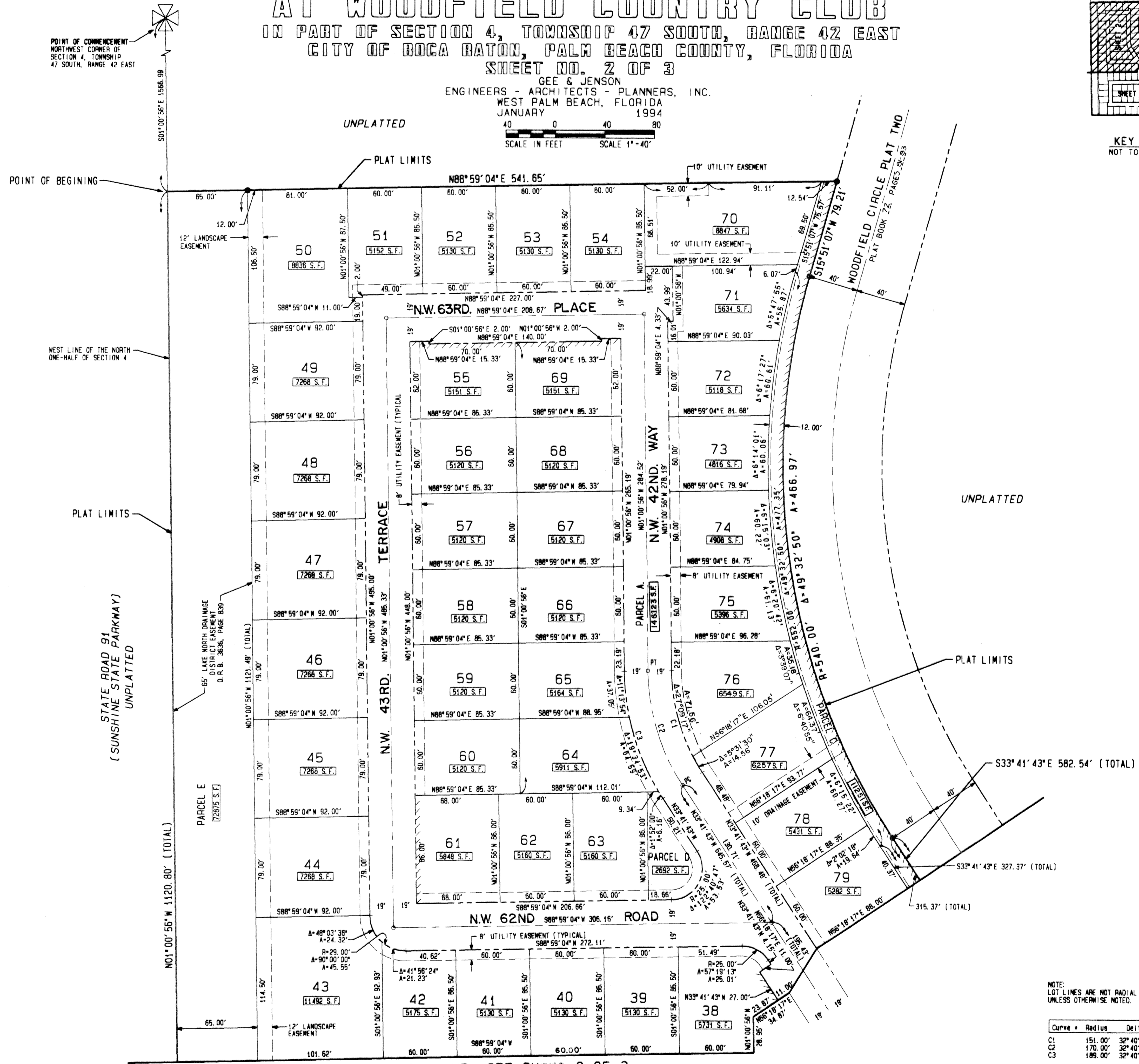
GEE & JENSON  
ENGINEERS - ARCHITECTS - PLANNERS, INC.  
WEST PALM BEACH, FLORIDA  
JANUARY 1994

SCALE IN FEET SCALE 1" = 40'



KEY MAP  
NOT TO SCALE

STATE OF FLORIDA  
COUNTY OF PALM BEACH  
This plat was filed for  
record at \_\_\_\_\_ on this \_\_\_\_\_ day  
of \_\_\_\_\_ 1994, and duly  
recorded in Plat Book No. \_\_\_\_\_  
on Pages \_\_\_\_\_ thru \_\_\_\_\_  
DOROTHY WILKEN  
Clerk Circuit Court  
By \_\_\_\_\_ D. C.



SCALE: 1" = 40'

SUBDIVISION \* MAYFAIR AT WOODFIELD  
COUNTRY CLUB  
BOOK 73 PAGE 150  
FLOOD MAP \*  
QUAD \* ZONING  
S.E. ZIP CODE  
PUD NAME C130CA  
4/47/94

COMPUTED D. BACHOR  
DRAWN D. BACHOR  
CHECKED  
APPROVED  
JOB NO. 93-330

NOTE: LOT LINES ARE NOT RADIAL UNLESS OTHERWISE NOTED.

Curve	Radius	Delta	Length	Tangent	Chord/Brg
C1	151.00'	32°40'47"	86.12'	44.27'	64.96' N17-21-19.4W
C2	170.00'	32°40'47"	96.96'	49.84'	95.65' N17-21-19.4W
C3	189.00'	32°40'47"	107.80'	55.41'	106.34' N17-21-19.4W

MATCH LINE SEE SHEET 3 OF 3