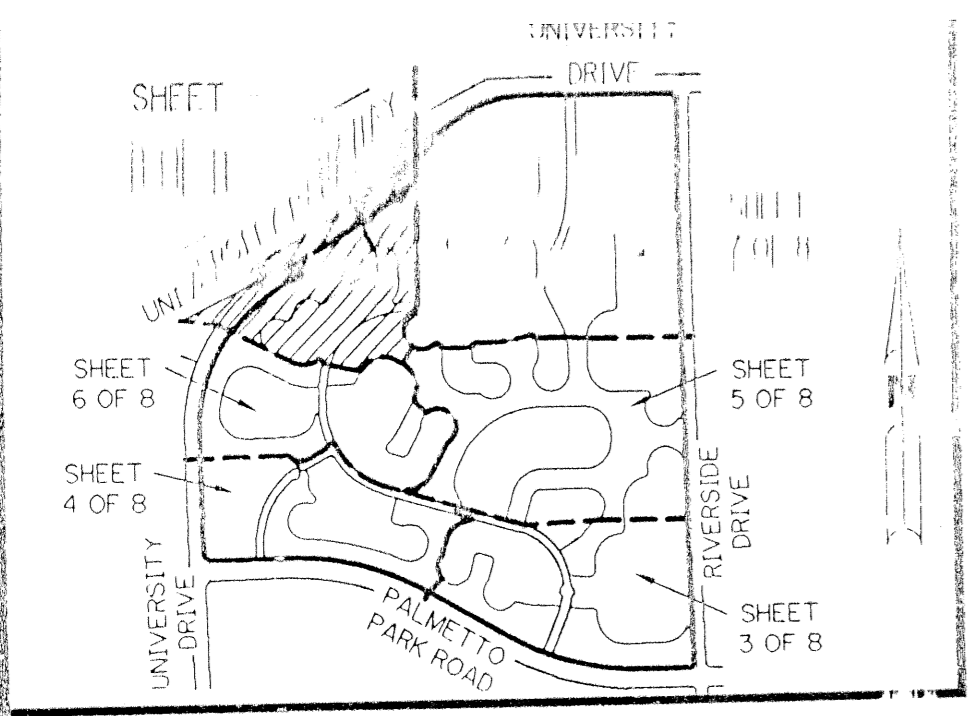


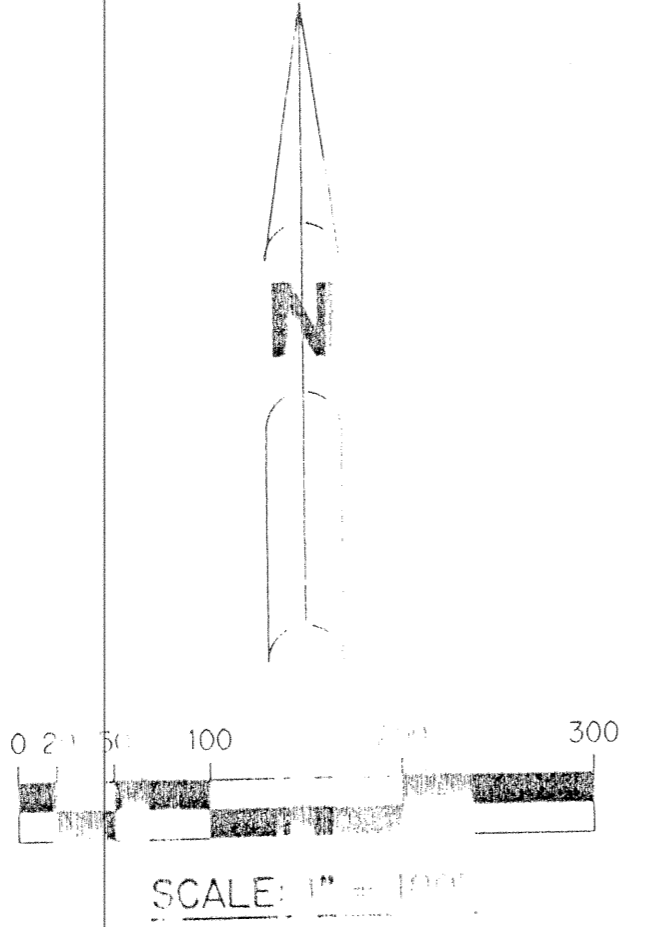
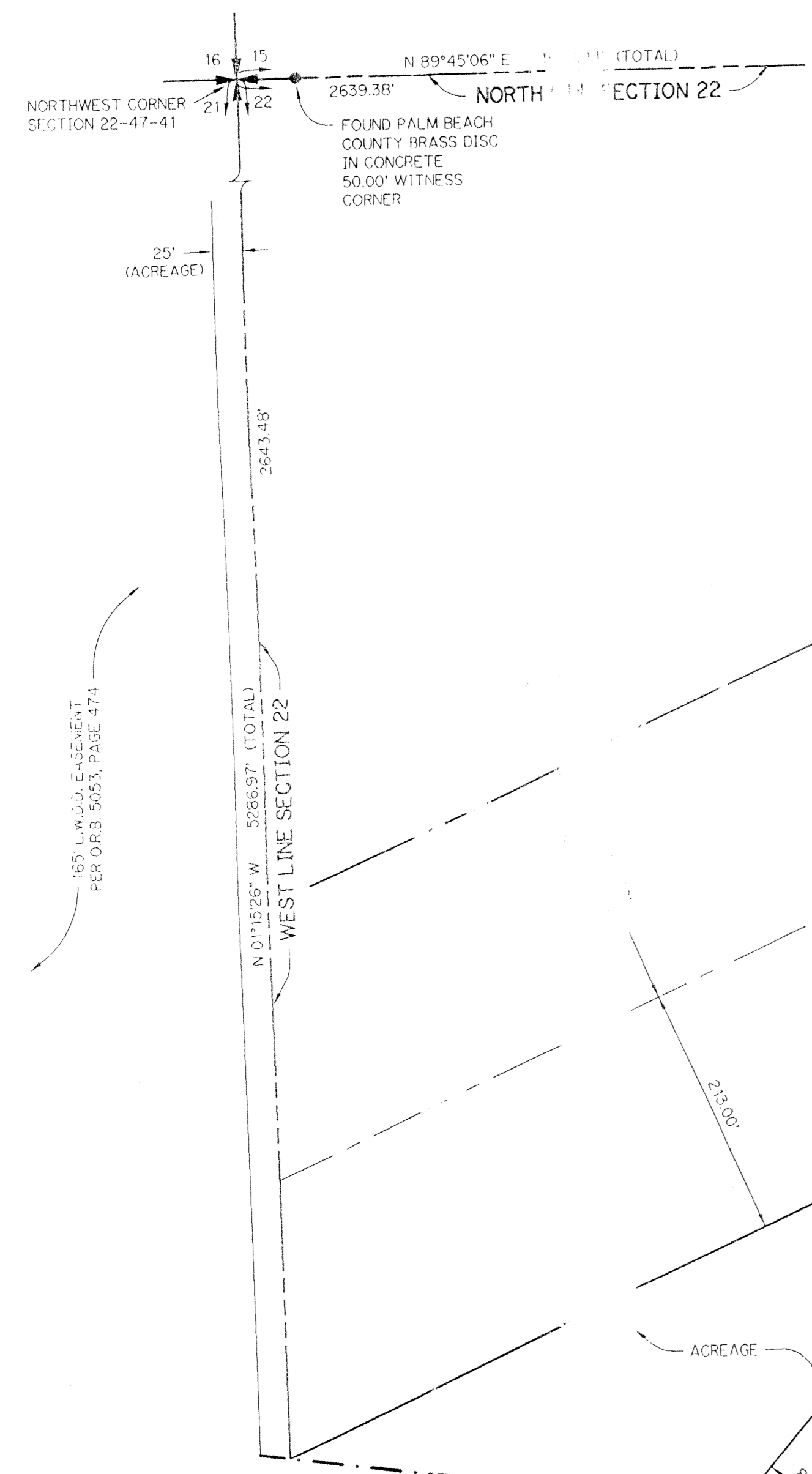
BOCA FALLS - PLAT ONE

A PART OF THE BAY WINDS PLANNED UNIT DEVELOPMENT
A PARCEL OF LAND LYING IN SECTION 22, TOWNSHIP 47 SOUTH, RANGE 41 EAST,
PALM BEACH COUNTY, FLORIDA.

SHEET 8 OF 8 MAY, 1994



KEY MAP
N.T.S.



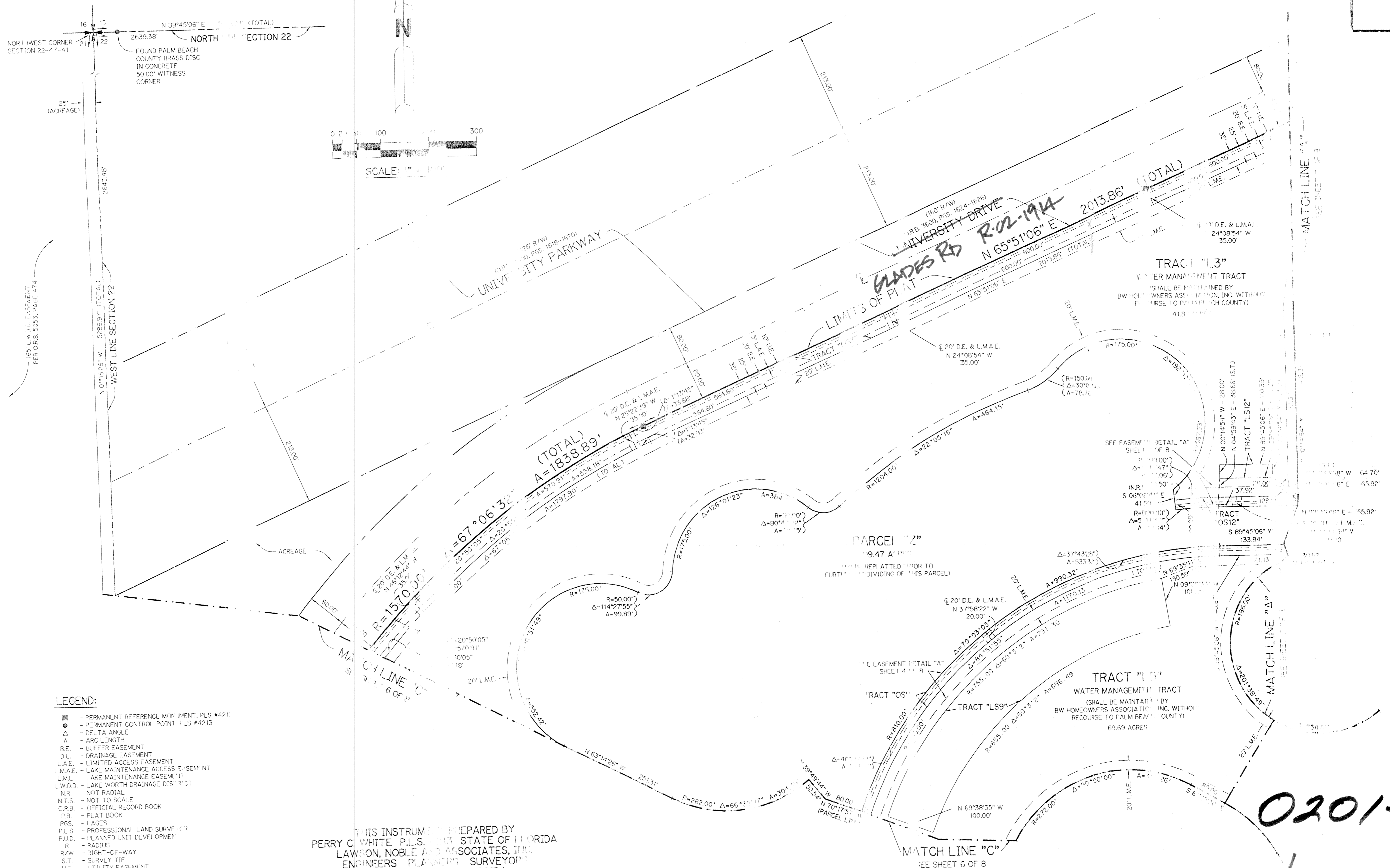
SUBDIVISION * BOCA FALLS-PLAT ONE
BOOK 73 PAGE 131
FLOOD ZONE A0-1 FLOOD MAP # 100B
QUAD * 69 ZONING RT
SE 80-47 ZIP CODE 33483
PLD NAME BAY WINDS P.U.D.

T42-778

LEGEND:

- - PERMANENT REFERENCE MONUMENT, PLS #421
- - PERMANENT CONTROL POINT, PLS #4213
- Δ - DELTA ANGLE
- A - ARC LENGTH
- B.E. - BUFFER EASEMENT
- D.E. - DRAINAGE EASEMENT
- L.A.E. - LIMITED ACCESS EASEMENT
- L.M.A.E. - LAKE MAINTENANCE ACCESS EASEMENT
- L.M.E. - LAKE MAINTENANCE EASEMENT
- L.W.D.D. - LAKE WORTH DRAINAGE DISTRICT
- N.R. - NOT RADIAL
- N.T.S. - NOT TO SCALE
- O.R.B. - OFFICIAL RECORD BOOK
- P.B. - PLAT BOOK
- P.S. - PAGES
- P.L.S. - PROFESSIONAL LAND SURVEYOR
- P.U.D. - PLANNED UNIT DEVELOPMENT
- R - RADIUS
- R/W - RIGHT-OF-WAY
- S.T. - SURVEY TIE
- U.E. - UTILITY EASEMENT

THIS INSTRUMENT PREPARED BY
PERRY C. WHITE, P.L.S., IN THE STATE OF FLORIDA
LAWSON, NOBLE AND ASSOCIATES, INC.
ENGINEERS - PLANNING - SURVEYORS
WEST PALM BEACH, FLORIDA



0201-015

BOCA FALLS-PLAT ONE 73/131