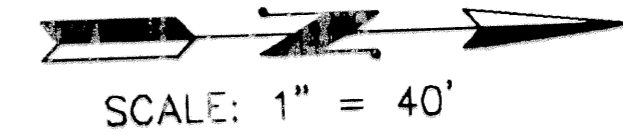


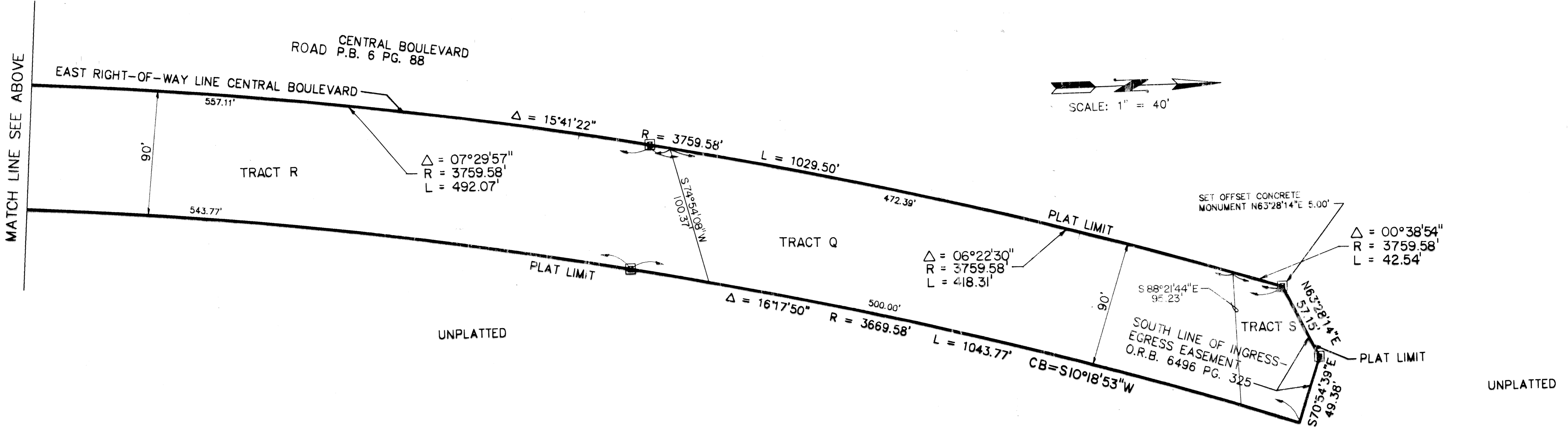
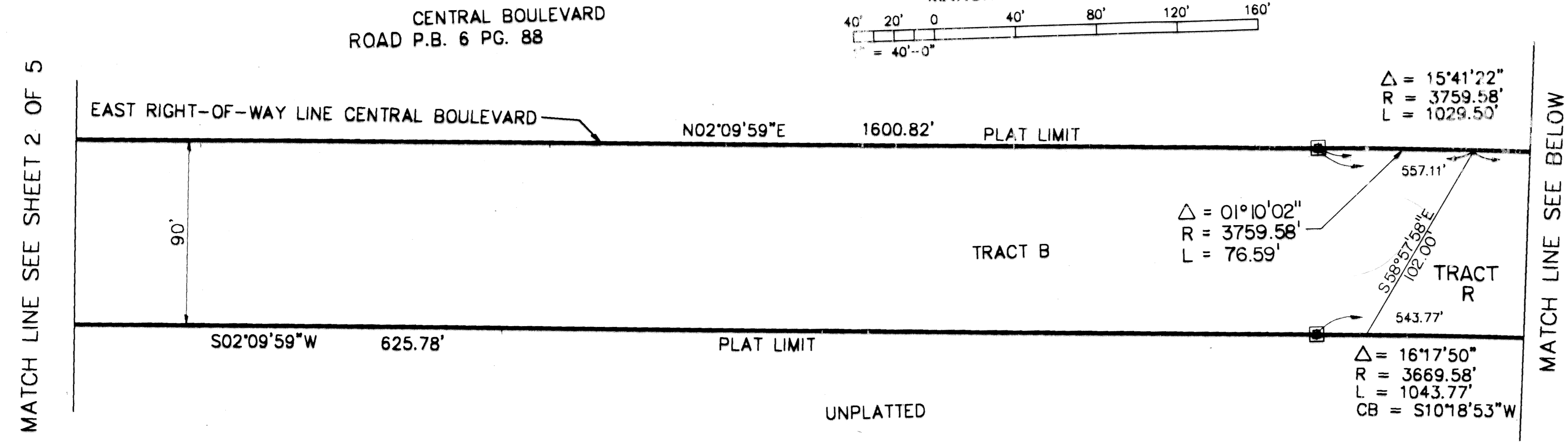
PLAT OF BENT TREE P.U.D. PHASE 1

IN PART OF SECTION 2, TOWNSHIP 42 SOUTH, RANGE 42 EAST
CITY OF PALM BEACH GARDENS, PALM BEACH COUNTY, FLORIDA
SHEET NO. 5 OF 5

GEE & JENSON
ENGINEERS - ARCHITECTS - PLANNERS, INC.
WEST PALM BEACH, FLORIDA
MARCH 1994



STATE OF FLORIDA
COUNTY OF PALM BEACH
This plat was filed for
record at _____ M. this _____ day
of _____ 1994, and duly
recorded in Plat Book No. _____
on Pages _____ thru _____
DOROTHY WILKEN
Clerk Circuit Court
By _____ D.C.



SUBDIVISION # Bent Tree P.U.D. Ph1
BOOK 73 PAGE 93
FLOOR - FLOOR MAP # -
CARD # - ZONING -
SE - ZIP CODE -
PLAT NAME c/ pbgardens

COMPUTED _____
DRAWN _____
CHECKED _____
APPROVED _____
JOB NO. 92-258

C:\92258\PLAT1-1
Plotted: 3/2/1994 9:35am
Plot Scale: 1"=40.0