

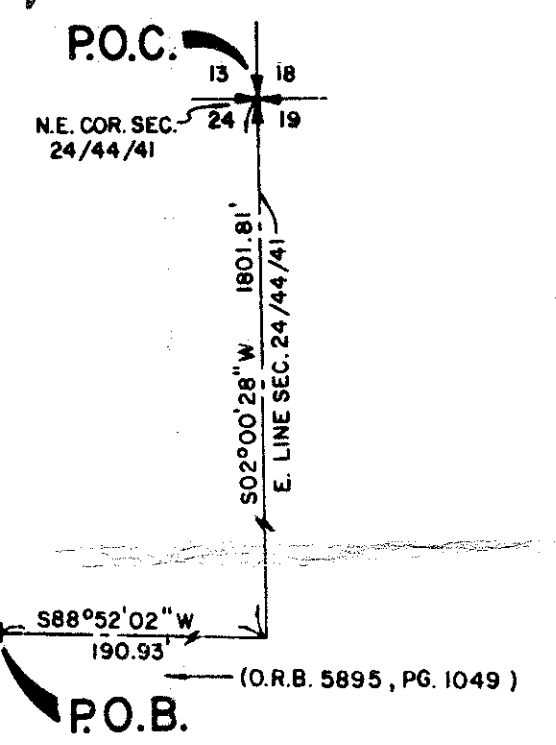
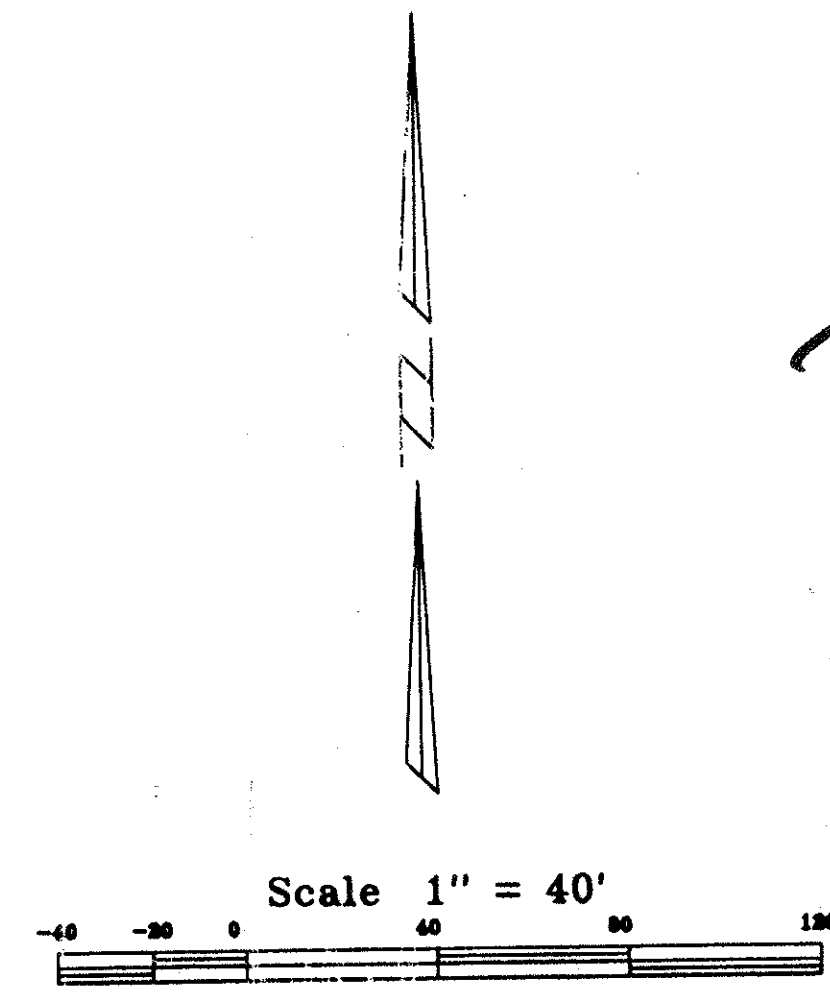
KEY MAP  
NOT TO SCALE

# WHITEHORSE ESTATES

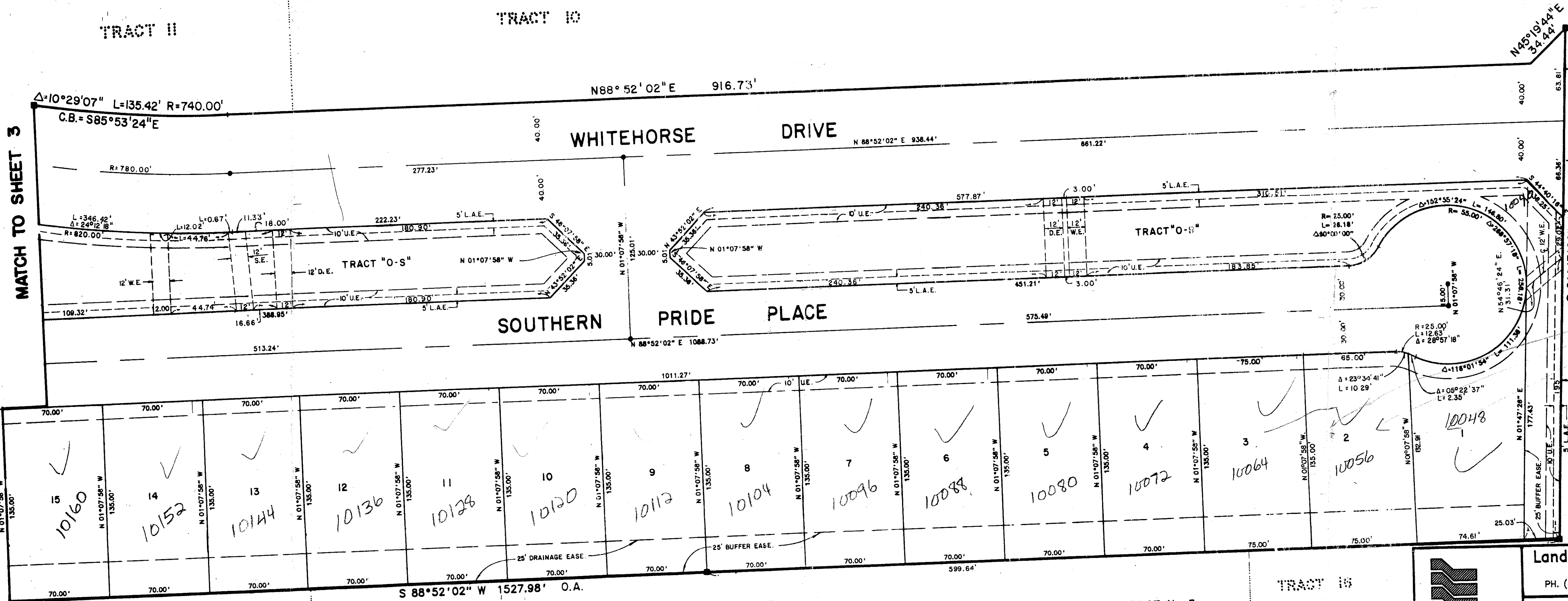
PALM VIEW LAKES A PLANNED UNIT DEVELOPMENT  
 BEING A REPLAT OF A PORTION OF TRACTS 5 THRU 13 INCLUSIVE, BLOCK 26, PALM BEACH  
 FARMS COMPANY PLAT NO. 3, PLAT BOOK 2, PAGES 45 THRU 54 INCLUSIVE, PUBLIC  
 RECORDS OF PALM BEACH COUNTY, FLORIDA AND A PORTION OF THE NORTHWEST QUARTER  
 OF SECTION 24, TOWNSHIP 44 SOUTH, RANGE 41 EAST, PALM BEACH COUNTY, FLORIDA.  
 SHEET 2 OF 10 JULY, 1994.

STATE OF FLORIDA  
 COUNTY OF PALM BEACH  
 This Plat was filed for record at \_\_\_\_\_  
 M. this day of \_\_\_\_\_, 19\_\_\_\_  
 and duly recorded in Plat Book No. \_\_\_\_\_  
 on Page \_\_\_\_\_  
 Dorothy H. Wilken, Clerk of the Circuit Court  
 By \_\_\_\_\_ D.C.

*PET. 86-100A*  
*5/2/4/G*



P.B. FARMS COMPANY PLAT No. 3  
 (P.B. 2, PGS. 45-54)



MATCH TO SHEET 3

*lots 1-2-3*  
*Do not*  
*issue permits*  
*until you check*  
*with FDOT*  
*MR. Foted*  
*622-6400*  
*5/3/94*

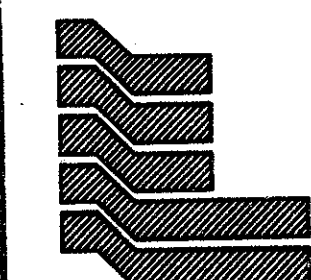
**0517-001**

**73/63**

SUBDIVISION - WHITEHORSE ESTATES  
 BOOK 73, PAGE 63  
 PLAT NO. 3  
 DATE 07-20-94  
 BY [Signature]

**Landmark Surveying & Mapping Inc.**  
 1850 FOREST HILL BOULEVARD  
 PH. (407) 433-5405 SUITE 100 W.P.B. FLORIDA

**WHITEHORSE ESTATES**



P.B. FARMS COMPANY PLAT No. 3  
 (P.B. 2, PGS. 45-54)