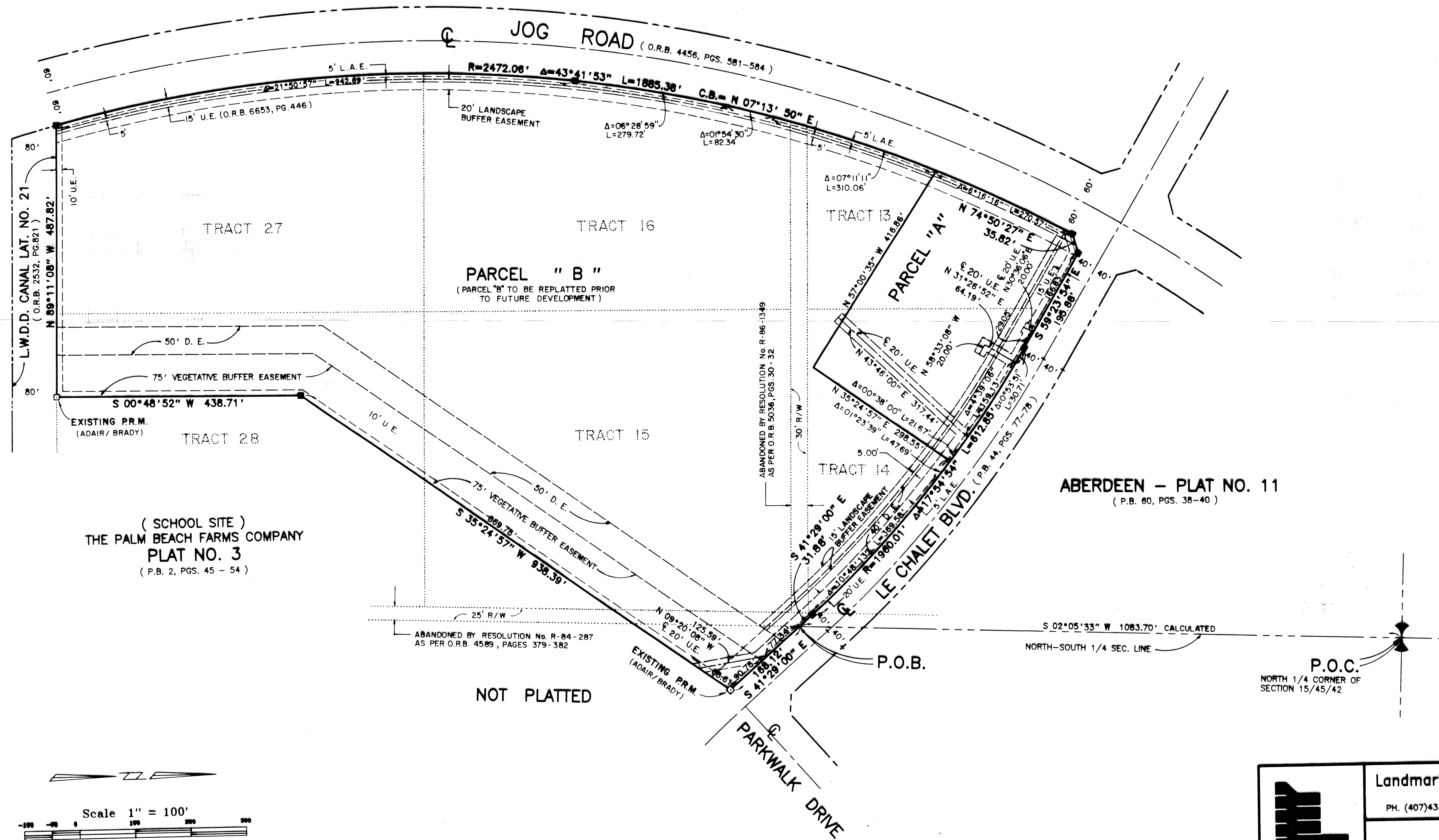


ABERDEEN - PLAT NO. 20

LYING IN SECTION 15, TOWNSHIP 45 SOUTH, RANGE 42 EAST
 BEING A REPLAT OF A PORTION OF TRACTS 13,14,15,16,27 & 28, BLOCK 47,
 PALM BEACH FARMS COMPANY PLAT NO. 3, AS RECORDED IN PLAT BOOK 2, PAGE 49
 OF THE PUBLIC RECORDS OF PALM BEACH COUNTY, FLORIDA
 SHEET 2 OF 2 MARCH, 1994

STATE OF FLORIDA
 COUNTY OF PALM BEACH
 This Plat was filed for record at _____
 M. this _____ day of _____ 19____
 and duly recorded in Plat Book No. _____
 on Page _____
 Dorothy M. Wilken, Clerk of the Circuit Court
 By _____ D.C.

GOLF COURSE
 ABERDEEN - PLAT NO. 2
 (P.B. 55, PGS. 11-22)

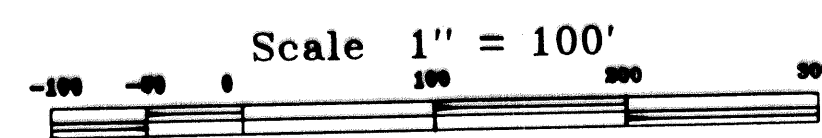


(SCHOOL SITE)
 THE PALM BEACH FARMS COMPANY
 PLAT NO. 3
 (P.B. 2, PGS. 45 - 54)

ABERDEEN - PLAT NO. 11
 (P.B. 60, PGS. 38-40)

ABANDONED BY RESOLUTION No. R-84-287
 AS PER O.R.B. 4589, PAGES 379-382

NOT PLATTED



Landmark Surveying & Mapping Inc.
 1850 FOREST HILL BOULEVARD
 PH. (407)433-5405 SUITE 100 W.P.B. FLORIDA

ABERDEEN - PLAT NO. 20

SUBDIVISION - ABERDEEN PLAT 20
 BOOK 73 PAGE 2
 FLOOD ZONE # 185A
 ZONING RS/SE
 MAP # 34
 S.F. 80-153
 ZIP CODE 33457
 DATE 12/15/92
 NAME SAME

TAZ#44