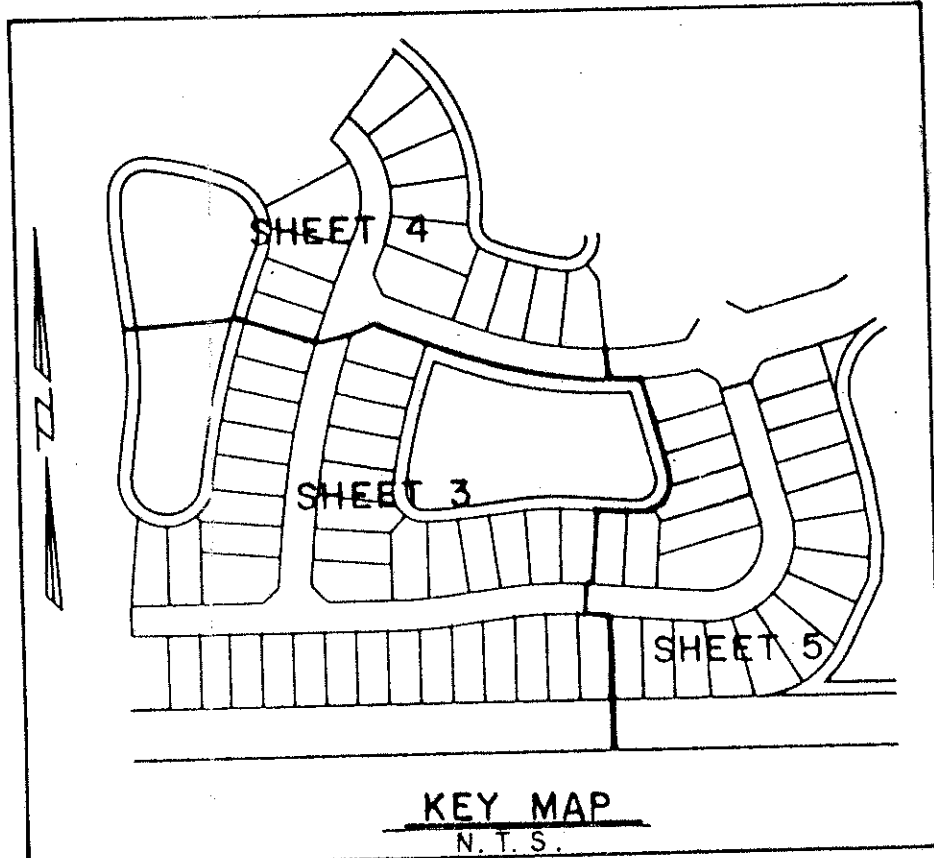
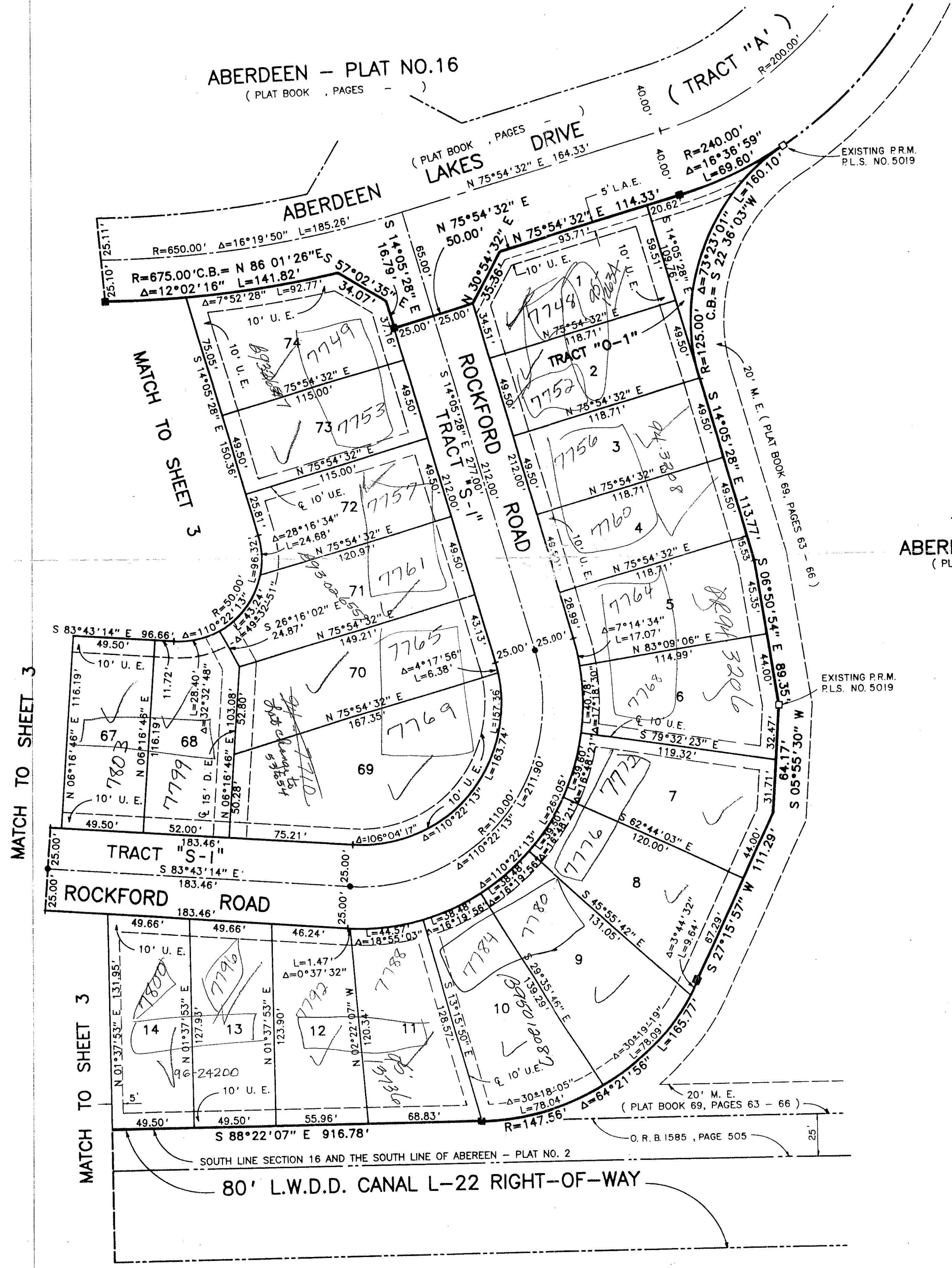


ABERDEEN - PLAT NO. 17

A PORTION OF A P.U.D.
 LYING IN SECTION 16, TOWNSHIP 45 SOUTH, RANGE 42 EAST
 BEING A REPLAT OF A PORTION OF ABERDEEN - PLAT NO. 2 AS RECORDED IN PLAT
 BOOK 55, PAGES 11 THRU 22, PUBLIC RECORDS OF PALM BEACH COUNTY, FLORIDA.
 SHEET 5 OF 5
 AUGUST, 1993



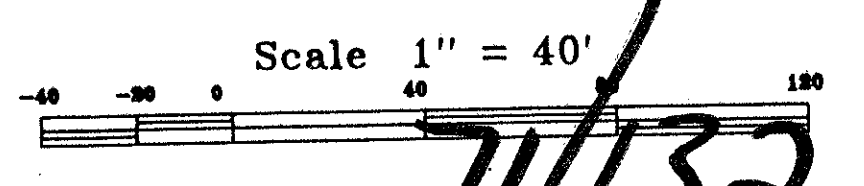
STATE OF FLORIDA
 COUNTY OF PALM BEACH
 This Plat was filed for record at _____
 M. this _____ day of _____, 19____
 and duly recorded in Plat Book No. _____
 on Page _____
 Dorothy H. Wilken, Clerk of the Circuit Court
 By _____ D.C.



TRACT "W-2"
 ABERDEEN-PLAT NO. 15
 (PLAT BOOK 69, PAGES 63 - 66)

**PET. 80-153
 ALLOC. #0001**

0270-019



Landmark Surveying & Mapping Inc.
 1850 FOREST HILL BOULEVARD
 PH. (407)433-5405 SUITE 100 W.P.B. FLORIDA
ABERDEEN - PLAT NO. 17

SUBDIVISION # PLAT NO. 17
 BOOK 132
 RECORD MAP # 185A
 ZONING
 MAP # 49
 ZIP CODE 33437
 CITY NAME ABERDEEN
 COUNTY PALM BEACH