

# PINE TERRACE

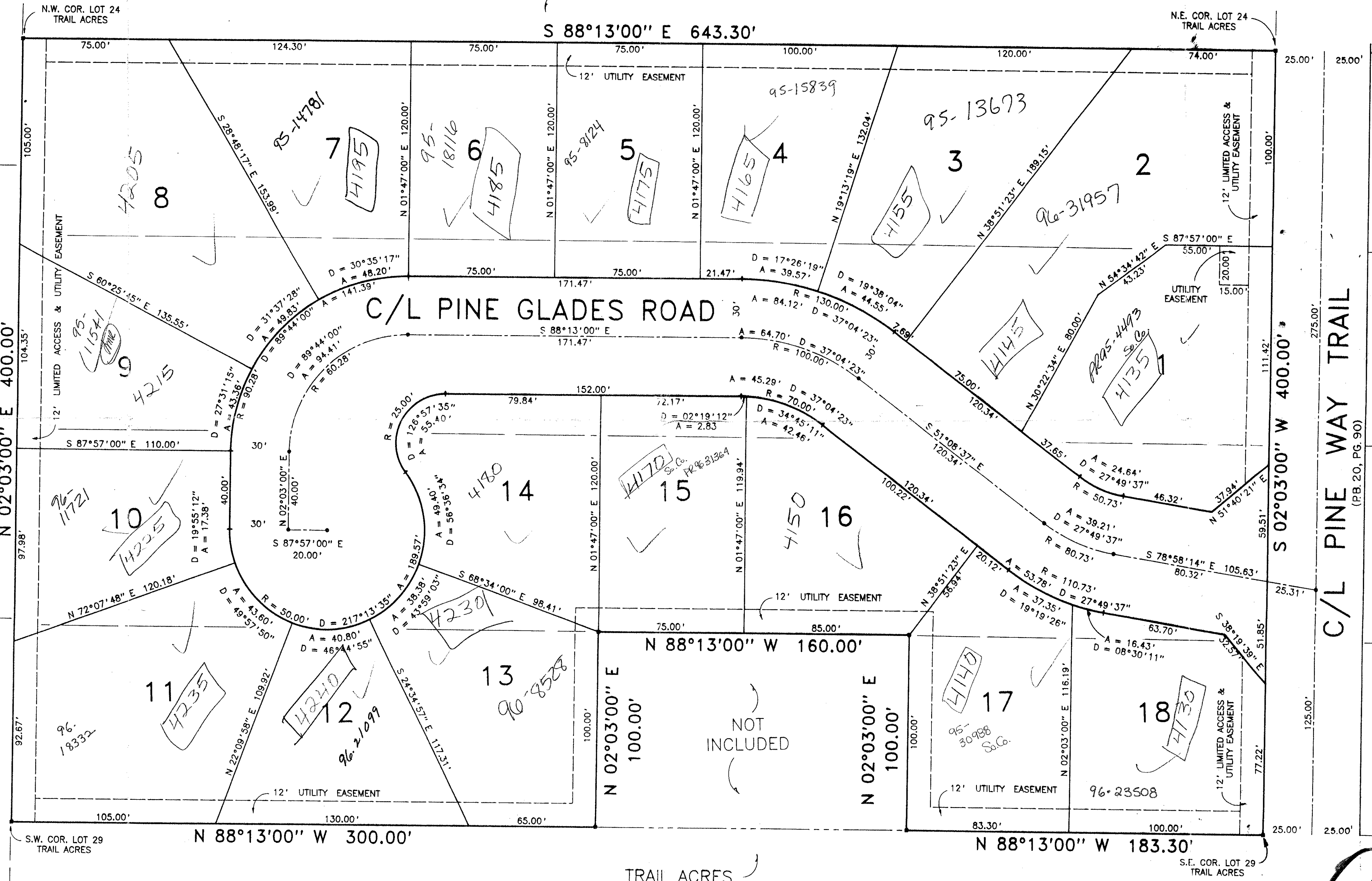
REPLAT - LOTS 24, 25, 28 AND PART OF LOT 29, TRAIL ACRES  
 (PLAT BOOK 20, PAGE 90) IN SECTION 1, TOWNSHIP 44 SOUTH, RANGE 42 EAST,  
 PALM BEACH COUNTY, FLORIDA  
 SHEET 2 OF 2

0457001

95

STATE OF FLORIDA  
 COUNTY OF PALM BEACH  
 This Plat was filed for record at \_\_\_\_\_  
 M. this \_\_\_\_ day of \_\_\_\_\_ 19\_\_\_\_  
 and duly recorded in Plat Book No. \_\_\_\_\_  
 on Page \_\_\_\_\_  
 Dorothy H. Wilken, Clerk of the Circuit Court  
 By \_\_\_\_\_ D.C.

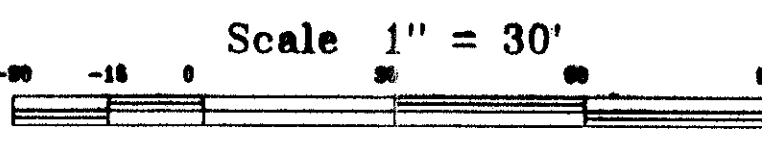
TRAIL ACRES  
 P.B. 20, PG. 90



WHISPERING PINES  
 P.B. 21, PG. 82  
 N 02°03'00" E 400.00'



TRAIL ACRES  
 P.B. 20, PG. 90



0459-001

7/95

RICHARD P. BREITENBACH, P.L.S.  
 LAND SURVEYING SERVICES  
 PHONE (407) 433-0280  
 2540 PALMARITA ROAD, WEST PALM BEACH, FL. 33406

PINE TERRACE

TAZ 276  
 94  
 71  
 32  
 RM  
 33406