

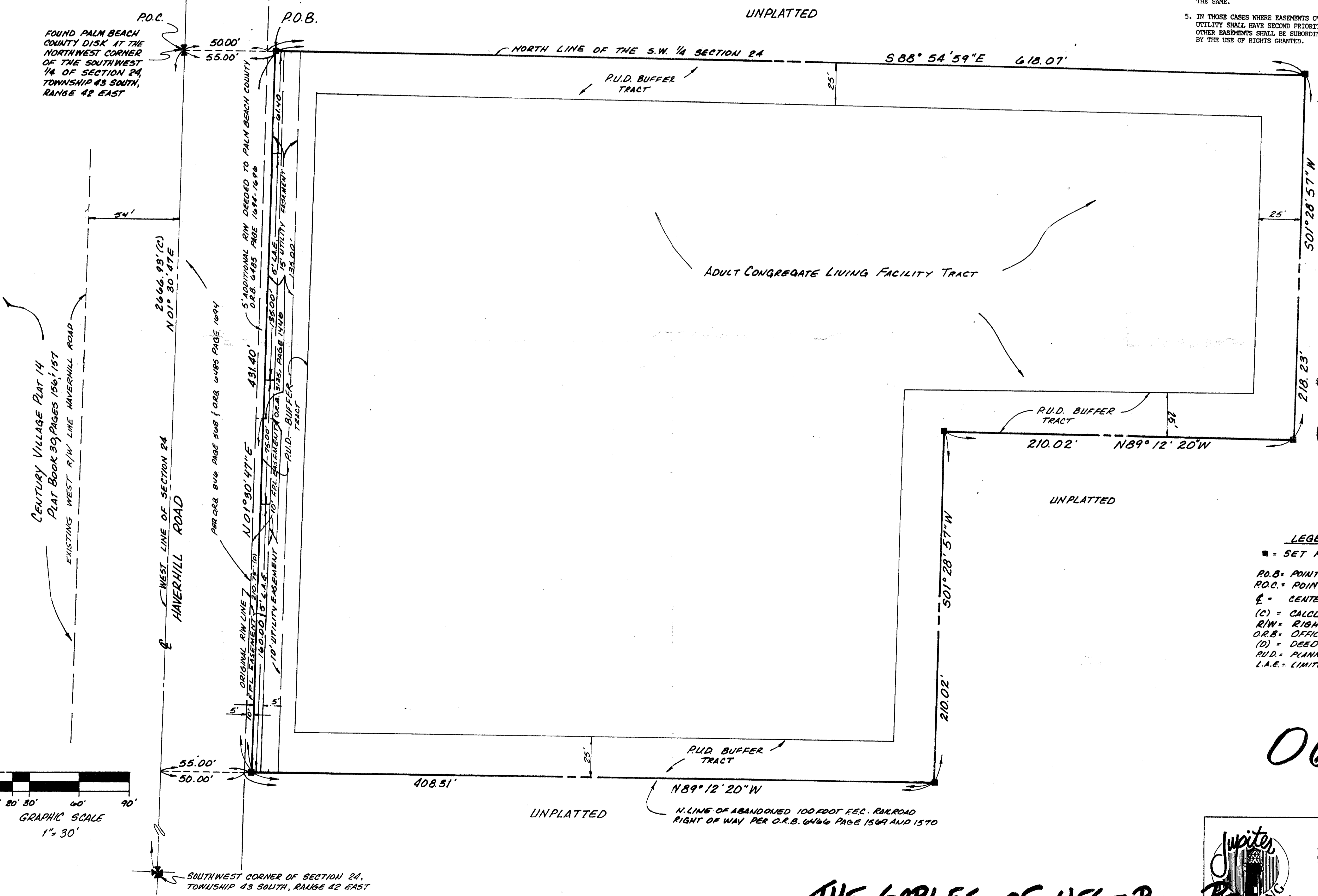
0621-001

# PLAT OF THE GABLES OF WEST PALM BEACH (P.U.D.)

BEING A PORTION OF SECTION 24, TOWNSHIP 43 SOUTH, RANGE 42 EAST, PALM BEACH COUNTY, FLORIDA

SHEET 2 OF 2

- NOTES:
1. NOTICE: THERE MAY BE ADDITIONAL RESTRICTIONS THAT ARE NOT RECORDED ON THIS PLAT THAT MAY BE FOUND IN THE PUBLIC RECORDS OF THIS COUNTY.
  2. BEARING REFERENCE: BEARINGS HEREON RELATED TO FLORIDA STATE PLANE COORDINATES, EAST ZONE, PALM BEACH COUNTY 1972 FREE ADJUSTMENT, NORTH 01°30'47" EAST ALONG THE WESTERLY LINE OF SECTION 24, TOWNSHIP 43 SOUTH, RANGE 42 EAST.
  3. THERE SHALL BE NO BUILDINGS OR ANY KIND OF CONSTRUCTION PLACED ON UTILITY EASEMENTS OR WATER MANAGEMENT TRACTS.
  4. THERE SHALL BE NO TREES OR SHRUBS PLACED ON UTILITY EASEMENTS WHICH ARE PROVIDED FOR WATER AND SEWER USE OR UPON DRAINAGE EASEMENTS. LANDSCAPING ON OTHER UTILITY EASEMENTS SHALL BE ALLOWED ONLY AFTER CONSENT OF ALL UTILITY COMPANIES OCCUPYING THE SAME.
  5. IN THOSE CASES WHERE EASEMENTS OVERLAP, DRAINAGE SHALL HAVE FIRST PRIORITY, UTILITY SHALL HAVE SECOND PRIORITY, ACCESS SHALL HAVE THIRD PRIORITY AND ALL OTHER EASEMENTS SHALL BE SUBORDINATE TO THESE WITH THEIR PRIORITIES DETERMINED BY THE USE OF RIGHTS GRANTED.

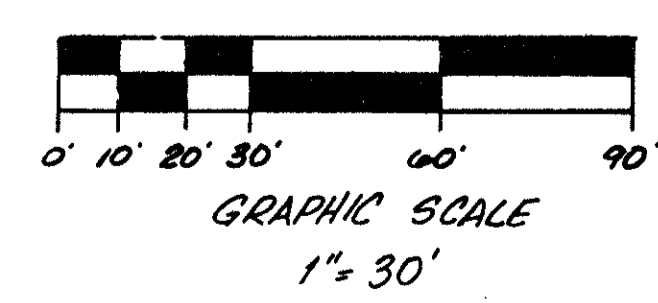


PET. 88-135  
 (VILLAGE CARE CLF)  
 5/2/10

- LEGEND**
- = SET PERMANENT REFERENCE MONUMENTS (P.R.M.) # 3010
  - P.O.B. = POINT OF BEGINNING
  - P.O.C. = POINT OF COMMENCEMENT
  - CL = CENTER LINE
  - (C) = CALCULATED
  - R/W = RIGHT-OF-WAY
  - O.R.B. = OFFICIAL RECORD BOOK
  - (D) = DEED
  - P.U.D. = PLANNED UNIT DEVELOPMENT
  - L.A.E. = LIMITED ACCESS EASEMENT

0621-001  
 7/1/04

SUBDIVISION #  
 BOOK 71 PAGE 63  
 FLOOD HAZ. # 1558  
 ZONING RM  
 SE 88-135 ZIP CODE 33417  
 PUD NAME GABLES OF WEST PALM BCH



T&Z 164



P.O. Box 7007 • Jupiter • Florida 33468 • 7007 407 • 744 • 4594

THE GABLES OF WEST PALM BEACH