

KEY MAP
N.T.S.

A PART OF LAKE CHARLESTON PLANNED UNIT DEVELOPMENT

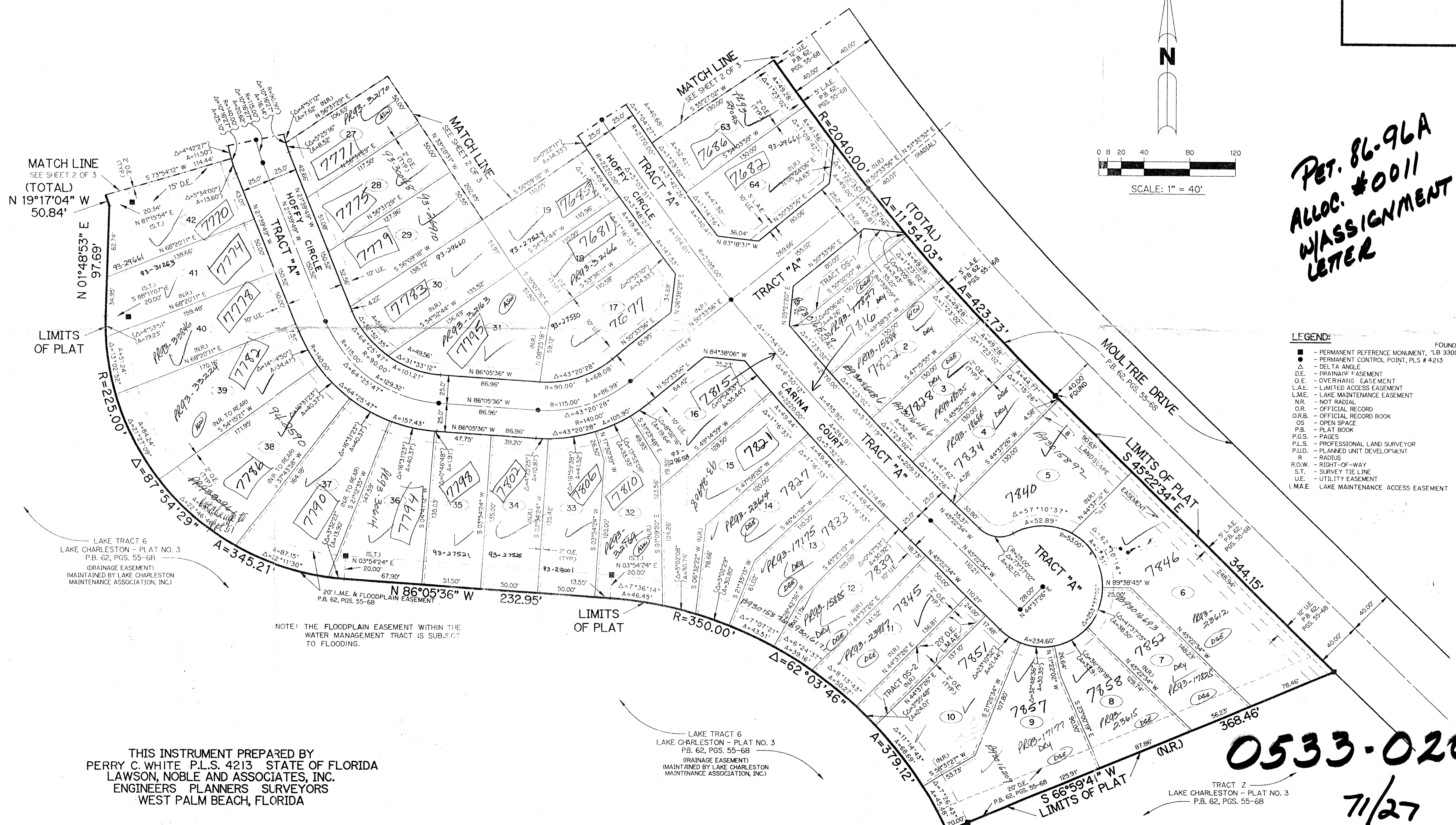
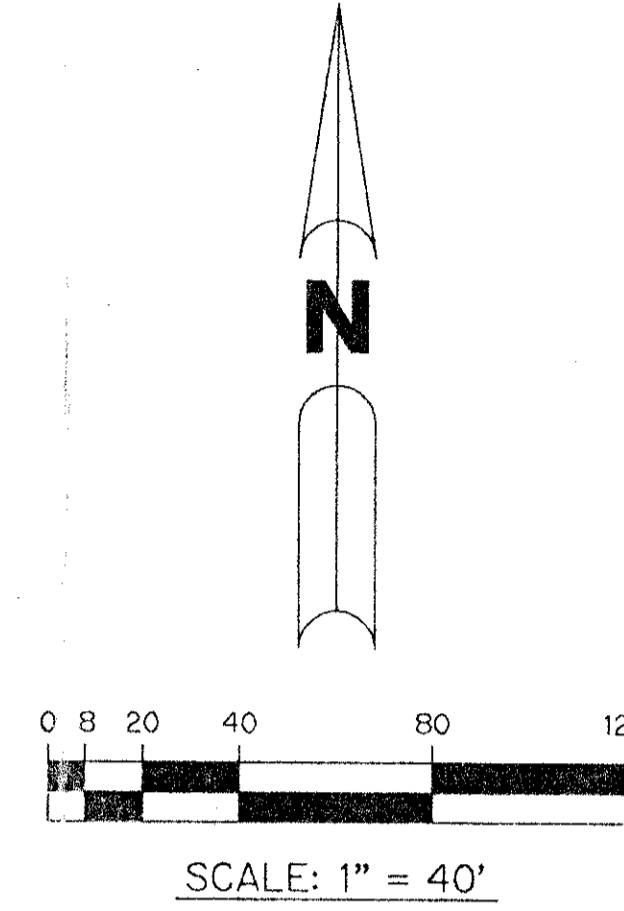
LAKE CHARLESTON - TRACT S

BEING A REPLAT OF ALL OF TRACT "S" ACCORDING
TO THE PLAT OF LAKE CHARLESTON PLAT NO. 3 - P.U.D. AS RECORDED IN PLAT BOOK 62,
PAGES 55 THROUGH 68, INCLUSIVE, OF THE PUBLIC RECORDS OF PALM BEACH COUNTY, FLORIDA.
SECTION 9, TOWNSHIP 45 SOUTH, RANGE 42 EAST

SHEET 3 OF 3

FEBRUARY, 1993

27



PET. 86-96A
ALOC. #0011
W/ASSIGNMENT
LETTER

- LEGEND:
- - PERMANENT REFERENCE MONUMENT, "LB 3300"
 - - PERMANENT CONTROL POINT, PLS # 4213
 - Δ - DELTA ANGLE
 - D.E. - DRAINAGE EASEMENT
 - O.E. - OVERHANG EASEMENT
 - L.A.E. - LIMITED ACCESS EASEMENT
 - L.M.E. - LAKE MAINTENANCE EASEMENT
 - N.R. - NOT RADIAL
 - O.R. - OFFICIAL RECORD
 - O.R.B. - OFFICIAL RECORD BOOK
 - OS - OPEN SPACE
 - P.B. - PLAT BOOK
 - P.G.S. - PAGES
 - P.L.S. - PROFESSIONAL LAND SURVEYOR
 - P.U.D. - PLANNED UNIT DEVELOPMENT
 - R - RADIUS
 - R.O.W. - RIGHT-OF-WAY
 - S.T. - SURVEY TIE LINE
 - U.E. - UTILITY EASEMENT
 - L.M.A.E. - LAKE MAINTENANCE ACCESS EASEMENT

TAZ = 439

BOOK 71
PAGE 25
FLOOD MAP # 185A
ZONING RTS
QUAD # 44
SE 86-96
PUD NAME LAKE CHARLESTON

THIS INSTRUMENT PREPARED BY
PERRY C. WHITE P.L.S. 4213 STATE OF FLORIDA
LAWSON, NOBLE AND ASSOCIATES, INC.
ENGINEERS PLANNERS SURVEYORS
WEST PALM BEACH, FLORIDA

LAKE TRACT 6
LAKE CHARLESTON - PLAT NO. 3
P.B. 62, PGS. 55-68
(DRAINAGE EASEMENT)
(MAINTAINED BY LAKE CHARLESTON
MAINTENANCE ASSOCIATION, INC.)

TRACT Z
LAKE CHARLESTON - PLAT NO. 3
P.B. 62, PGS. 55-68

0533-020

7/1/27

LAKE CHARLESTON - TRACT S SHEET 3 OF 3