

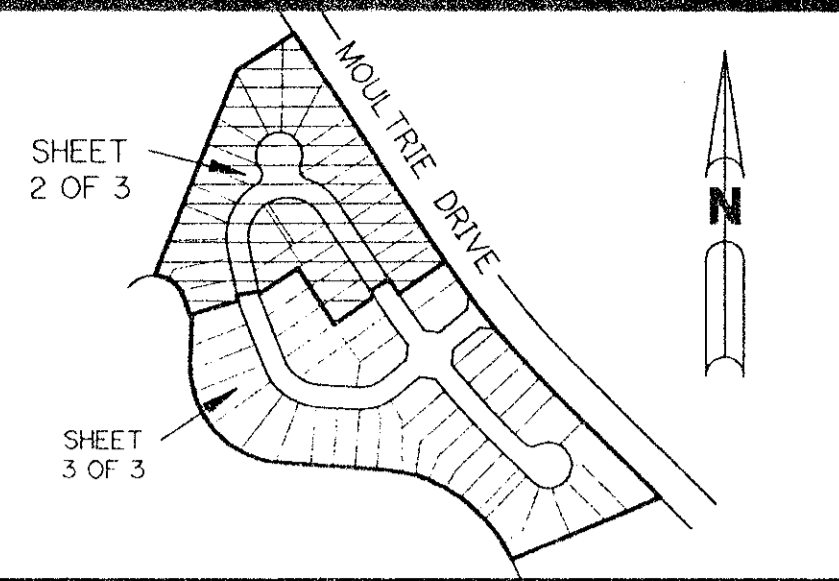
A PART OF LAKE CHARLESTON PLANNED UNIT DEVELOPMENT

LAKE CHARLESTON - TRACT S

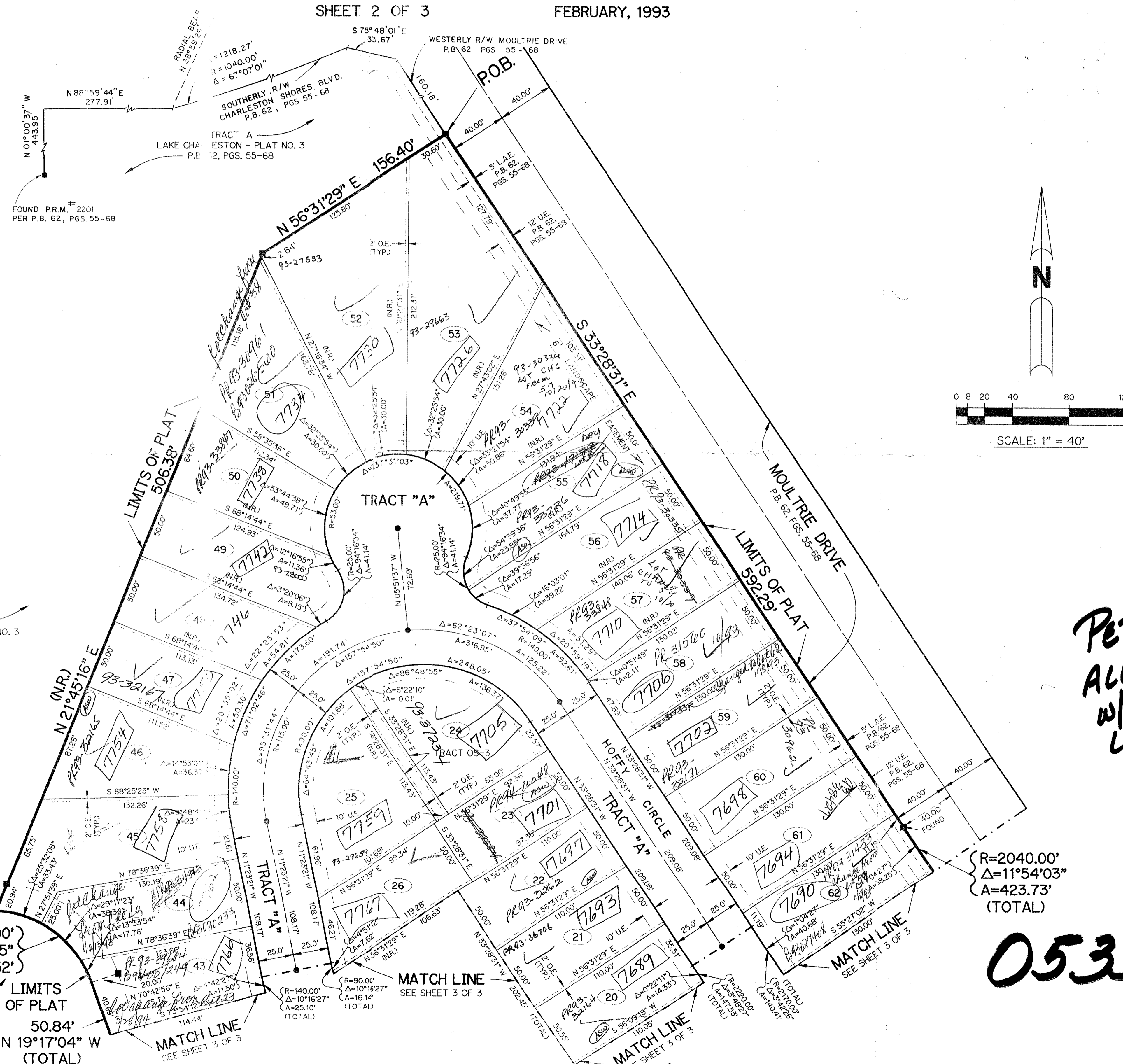
BEING A REPLAT OF ALL OF TRACT "S" ACCORDING TO THE PLAT OF LAKE CHARLESTON PLAT NO. 3 - P.U.D. AS RECORDED IN PLAT BOOK 62, PAGES 55 THROUGH 68, INCLUSIVE, OF THE PUBLIC RECORDS OF PALM BEACH COUNTY, FLORIDA. SECTION 9, TOWNSHIP 45 SOUTH, RANGE 42 EAST

SHEET 2 OF 3

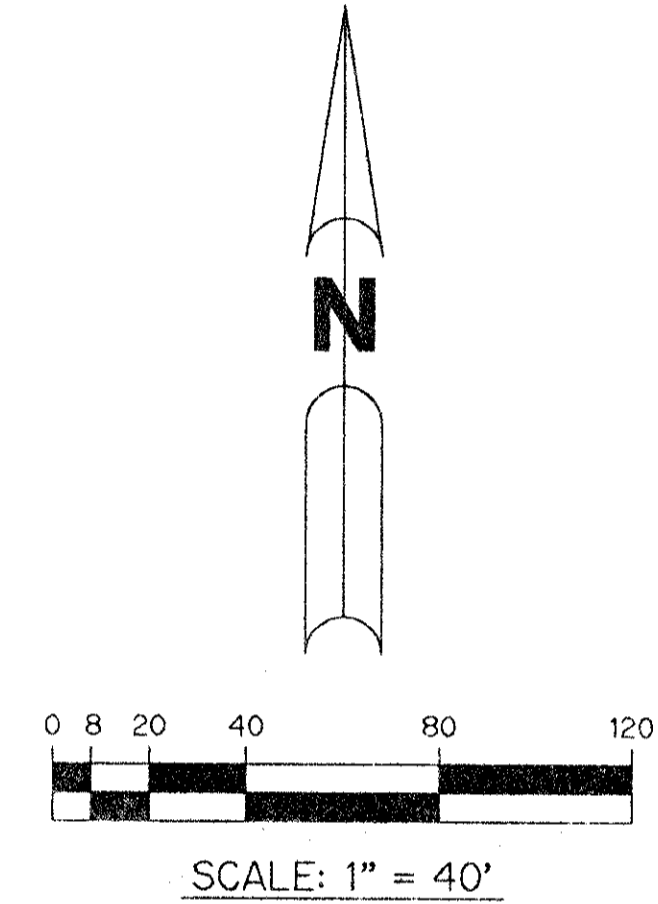
FEBRUARY, 1993



KEY MAP
N.T.S.



- LEGEND:**
- - PERMANENT REFERENCE MONUMENT, FOUND "LB 3300"
 - - PERMANENT CONTROL POINT, PLS # 4213
 - Δ - DELTA ANGLE
 - D.E. - DRAINAGE EASEMENT
 - O.E. - OVERHANG EASEMENT
 - L.A.E. - LIMITED ACCESS EASEMENT
 - L.M.E. - LAKE MAINTENANCE EASEMENT
 - N.R. - NOT RADIAL
 - O.R. - OFFICIAL RECORD
 - O.R.B. - OFFICIAL RECORD BOOK
 - OS - OPEN SPACE
 - P.B. - PLAT BOOK
 - P.G.S. - PAGES
 - P.L.S. - PROFESSIONAL LAND SURVEYOR
 - P.U.D. - PLANNED UNIT DEVELOPMENT
 - R - RADIUS
 - R.O.W. - RIGHT-OF-WAY
 - S.T. - SURVEY THE LINE
 - U.E. - UTILITY EASEMENT
 - P.O.B. - POINT OF BEGINNING



*PET. 86-96A
ALLOC. # 0011
W/ASSIGNMENT
LETTER*

THIS INSTRUMENT PREPARED BY
PERRY C. WHITE P.L.S. 4213 STATE OF FLORIDA
LAWSON, NOBLE AND ASSOCIATES, INC.
ENGINEERS PLANNERS SURVEYORS
WEST PALM BEACH, FLORIDA

NOTE: THE FLOODPLAIN EASEMENT WITHIN THE WATER MANAGEMENT TRACT IS SUBJECT TO FLOODING.

20' FLOODPLAIN EASEMENT
L.M.E.
P.B. 62, PGS. 55-68

R=75.00'
Δ=68°23'25"
A=89.52'

LIMITS OF PLAT
50.84'
N 19°17'04" W
(TOTAL)

(R=2040.00'
Δ=11°54'03"
A=423.73'
(TOTAL)

0533-020

LAKE CHARLESTON - TRACT S

7/26
SHEET 2 OF 3

TAZ: 439