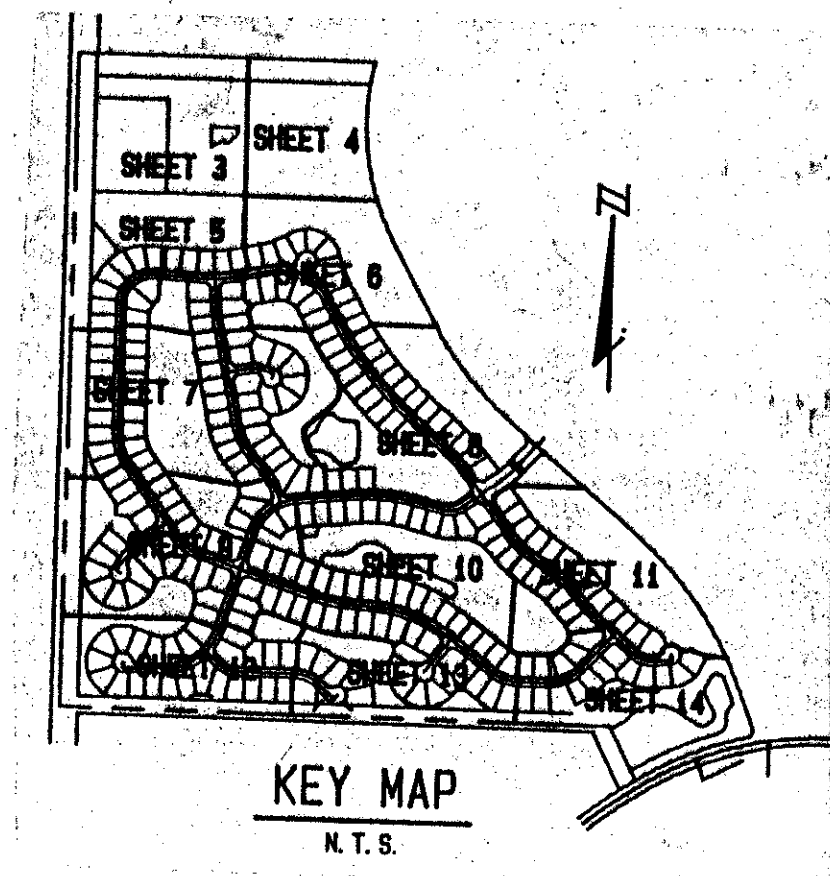


BINK'S FOREST OF THE LANDINGS AT WELLINGTON P. U. D. PLAT 2

IN PARTS OF SECTIONS 6 AND 7, TOWNSHIP 44 SOUTH, RANGE 41 EAST
PALM BEACH COUNTY, FLORIDA
IN FOURTEEN SHEETS SHEET No. 11

172

SEE AND JENSON
ENGINEERS - ARCHITECTS - PLANNERS, INC.
APRIL 1989
SCALE IN FEET SCALE 1"=50'



STATE OF FLORIDA
COUNTY OF PALM BEACH
This plat was filed for
record at _____ M. this _____ day
of _____ 1989, and duly
recorded in Plat Book No. _____
on Pages _____ and _____
Dorothy Wilken
Clerk Circuit Court
By: _____ D. C.

