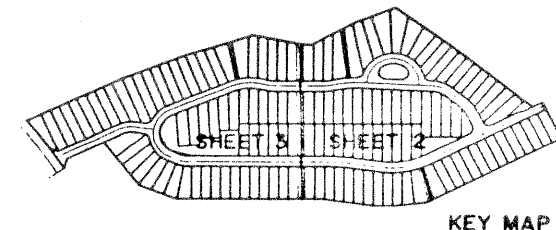


GREENBRIER AT INDIAN CREEK
BEING A PORTION OF SECTION 10, TOWNSHIP
41 SOUTH, RANGE 42 EAST, TOWN OF JUPITER
COUNTY OF PALM BEACH, FLORIDA.
SHEET 2, OF 3 SHEETS

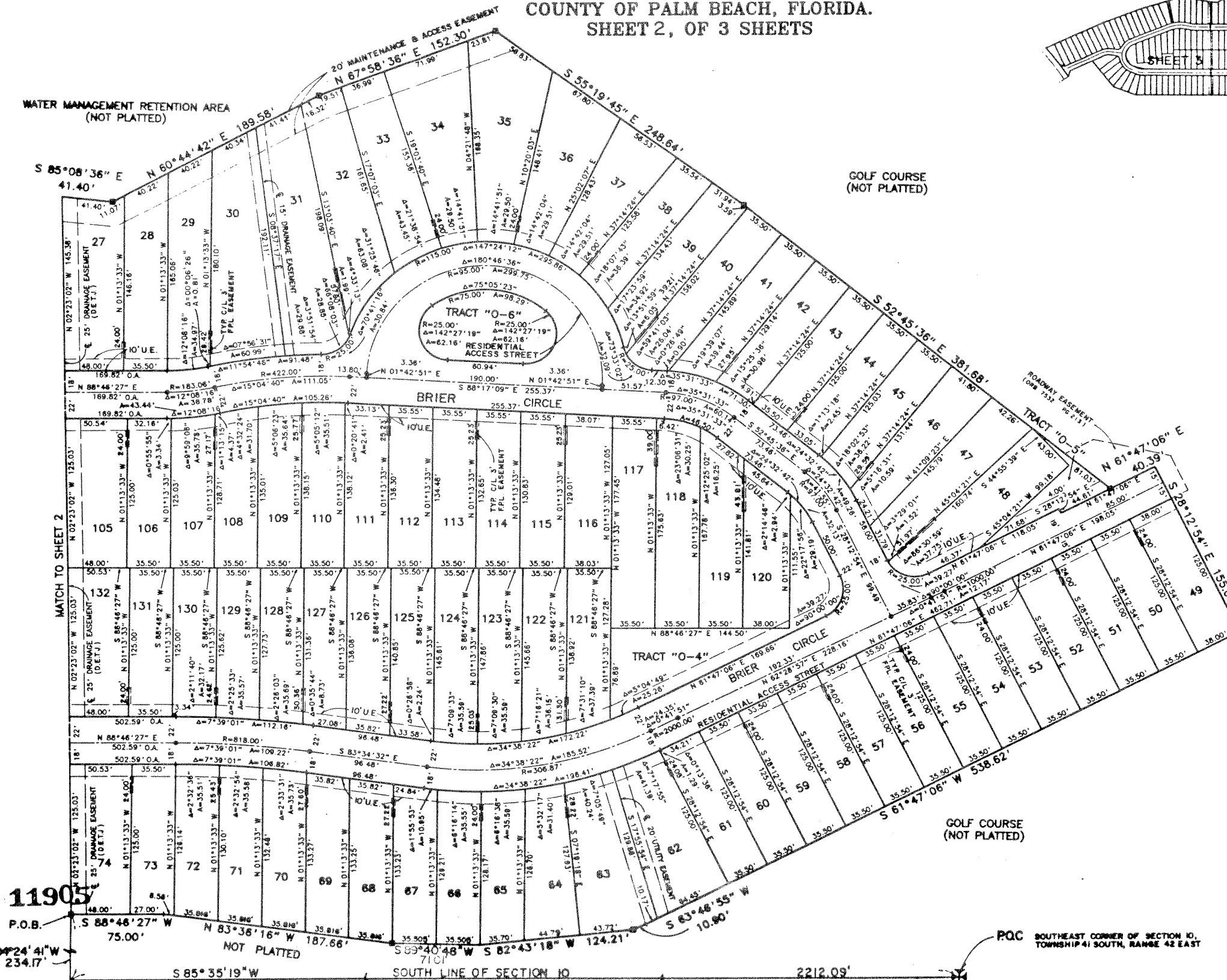
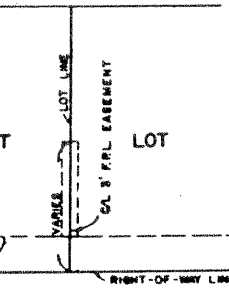
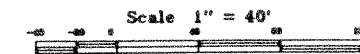


STATE OF FLORIDA
COUNTY OF PALM BEACH
This Plan was filed for record of _____
on this _____ day of _____, 18____
and duly recorded in Plat Book No. _____
on Page _____
Dorothy H. Wilton, Clerk of the Circuit Court
By _____ D.C.

WATER MANAGEMENT RETENTION AREA
(NOT PLATTED)

GOLF COURSE
(NOT PLATTED)

KEY MAP
RTY



11905

P.O.B.

PQC SOUTHEAST CORNER OF SECTION 10,
TOWNSHIP 41 SOUTH, RANGE 42 EAST

Landmark Surveying & Mapping Inc.
1850 FOREST HILL BOULEVARD
PH. (407)433-3405 SUITE 100 W.P.B. FLORIDA

GREENBRIER AT INDIAN CREEK