

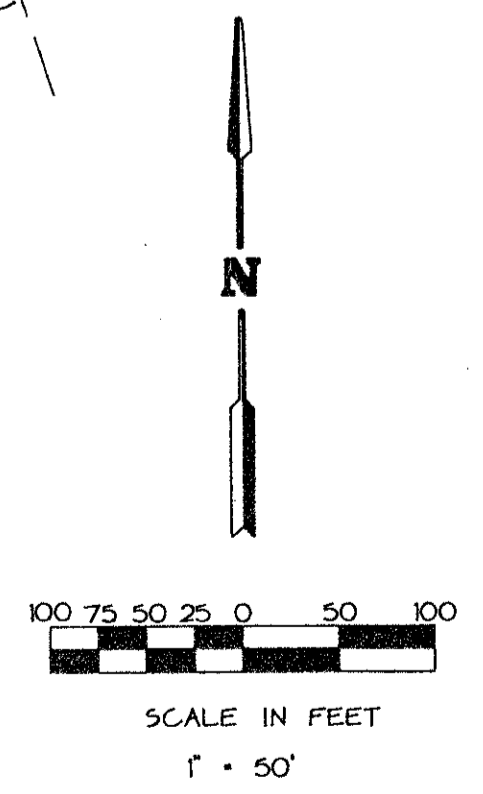
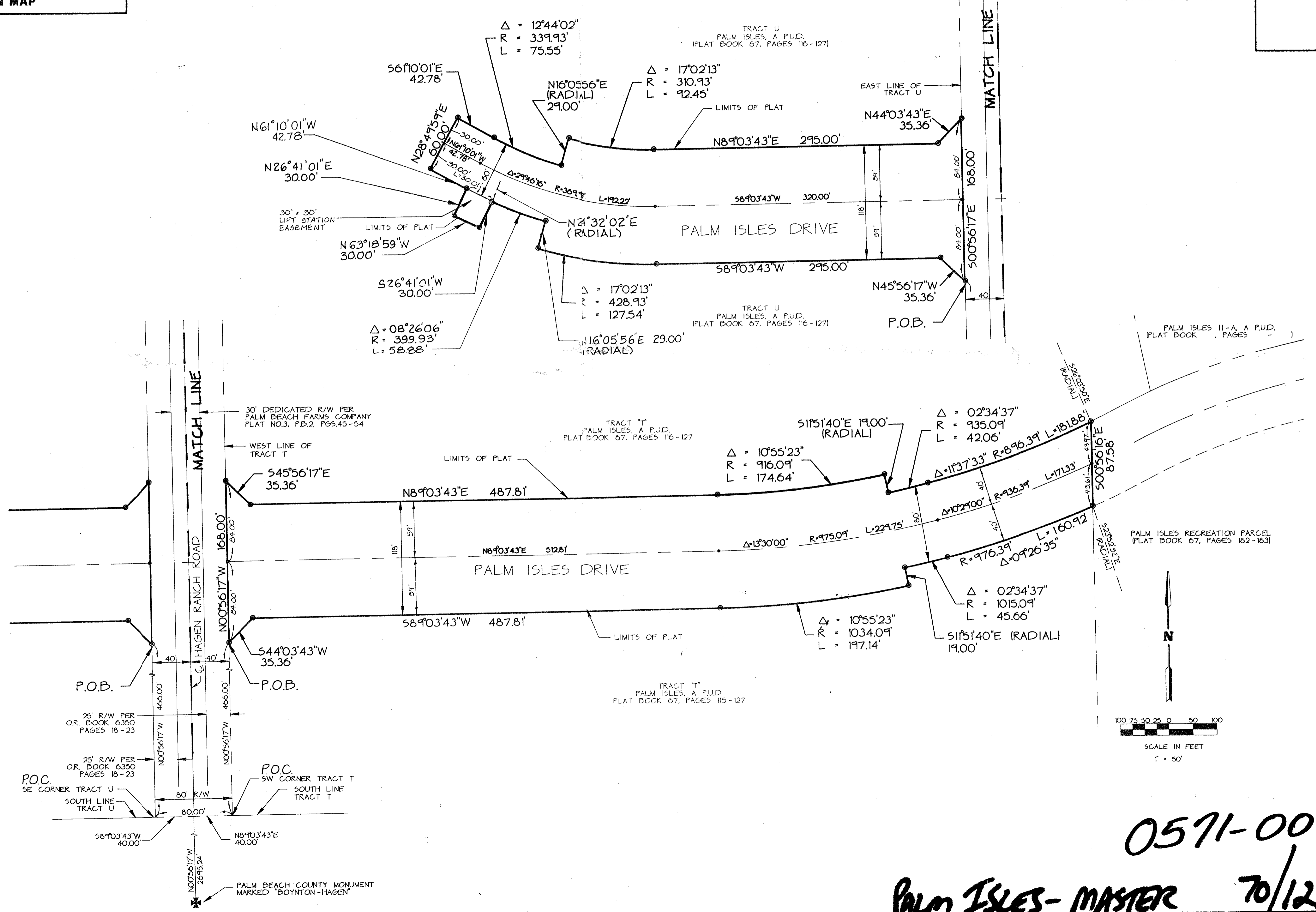
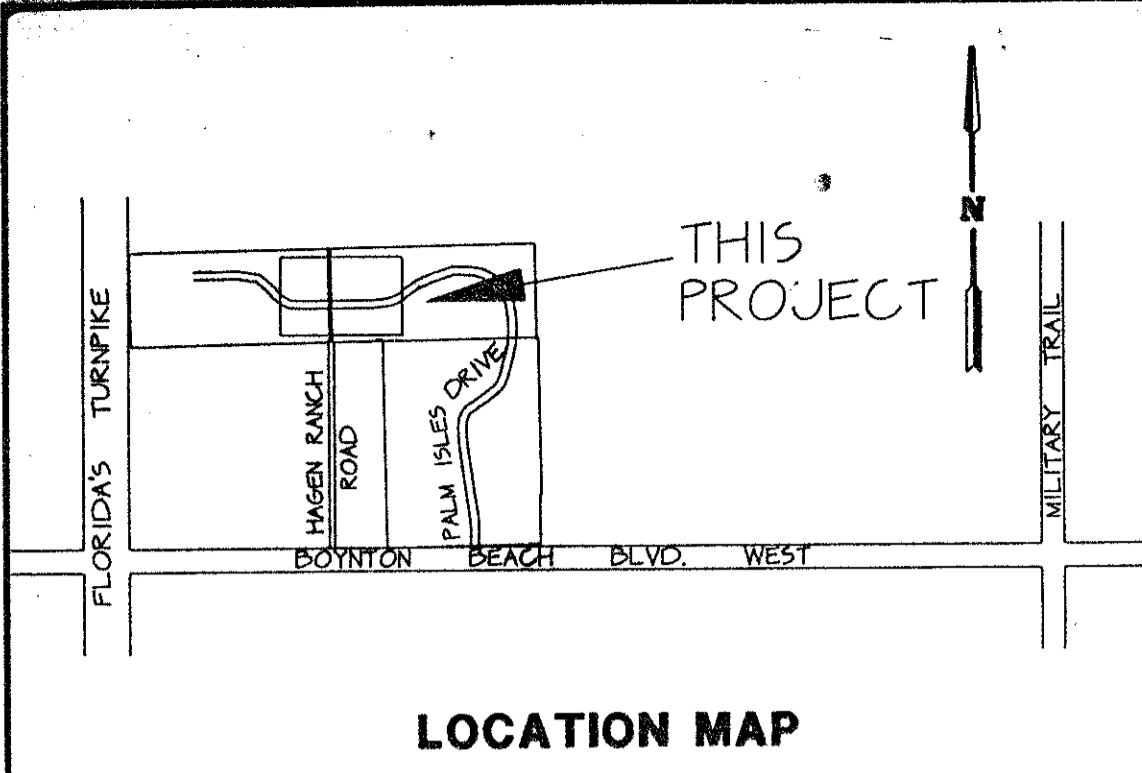
0571-004

PALM ISLES - MASTER

A REPLAT OF A PORTION OF TRACT T AND A PORTION OF TRACT U, BOTH OF PALM ISLES, A P.U.D. AS RECORDED IN PLAT BOOK 67, PAGES 116 THROUGH 127 INCLUSIVE OF THE PUBLIC RECORDS OF PALM BEACH COUNTY, FLORIDA IN SECTION 21, TOWNSHIP 45 SOUTH, RANGE 42 EAST, PALM BEACH COUNTY, FLORIDA

THIS INSTRUMENT PREPARED BY JAMES E. PARK, P.L.S. WILLIAMS, HATFIELD & STONER, INC. - ENGINEERS PLANNERS SURVEYORS 1325 SOUTH CONGRESS AVENUE, SUITE 118, BOYNTON BEACH, FLORIDA 33426

SHEET 2 OF 2



T&Z = 443

SUBDIVISION - PALM ISLES - MASTER
 BOOK 70
 PAGE 122
 FLOOD ZONES
 FLOOD MAP # 185A
 ZONING RS
 QUAD # 50
 SE 87-92
 ZIP CODE 33437
 PUD NAME SAME
 2/15/42

0571-004
 Palm Isles - MASTER 70/122