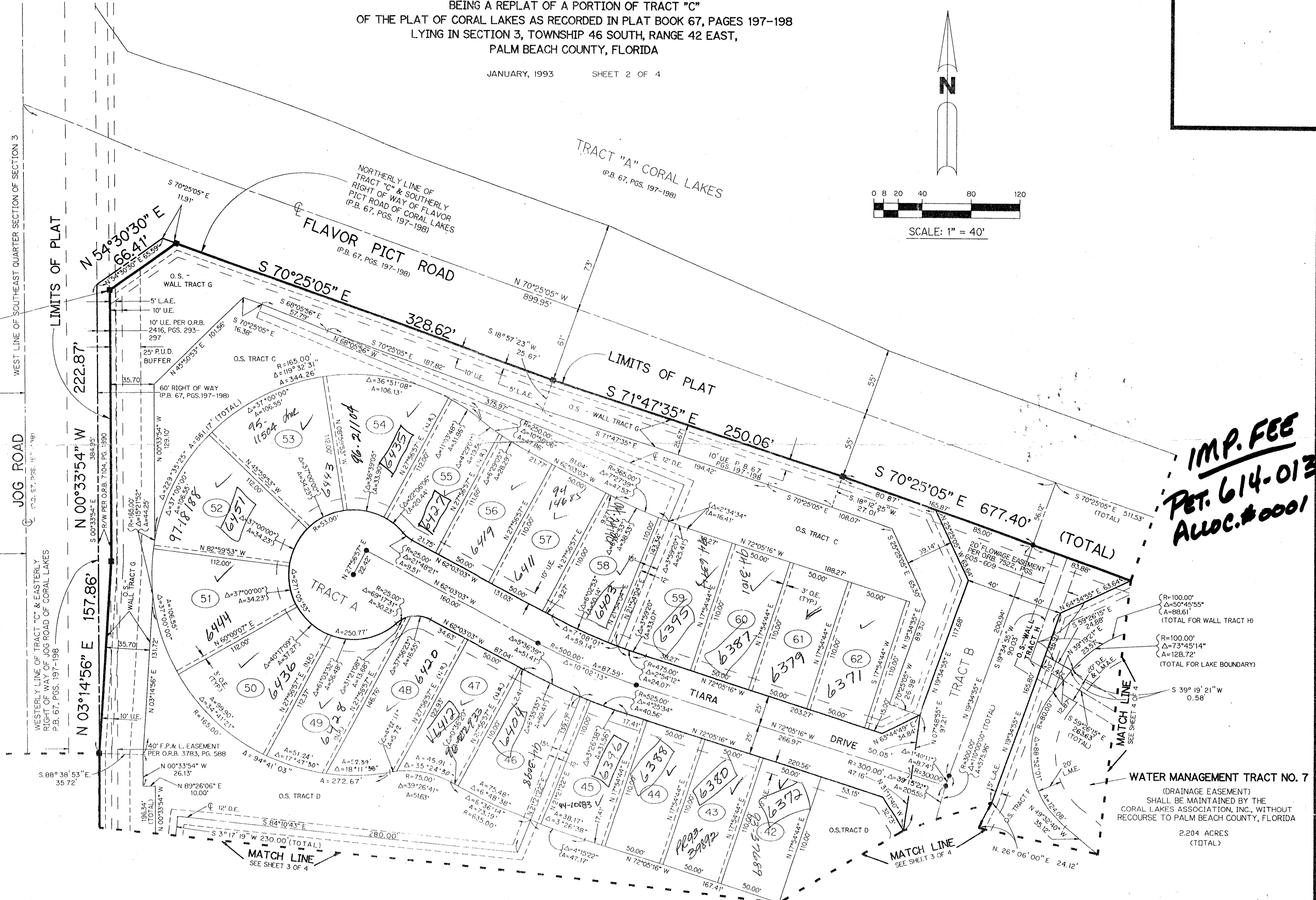
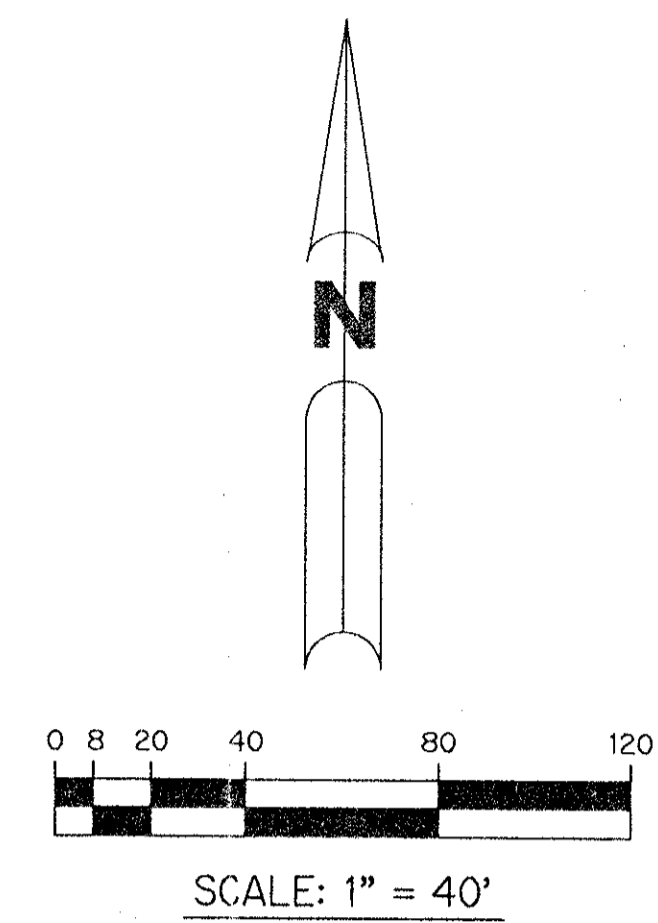
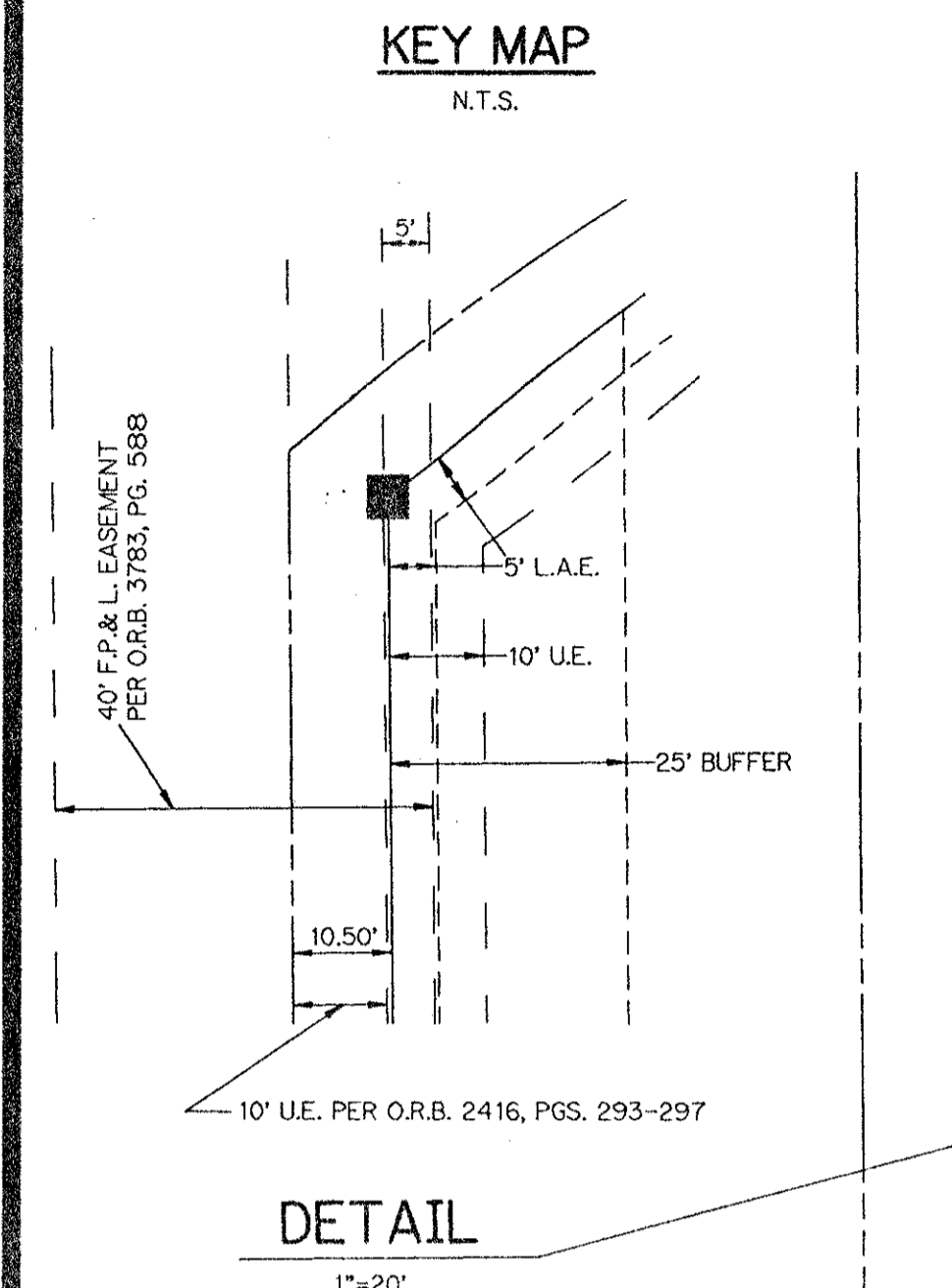
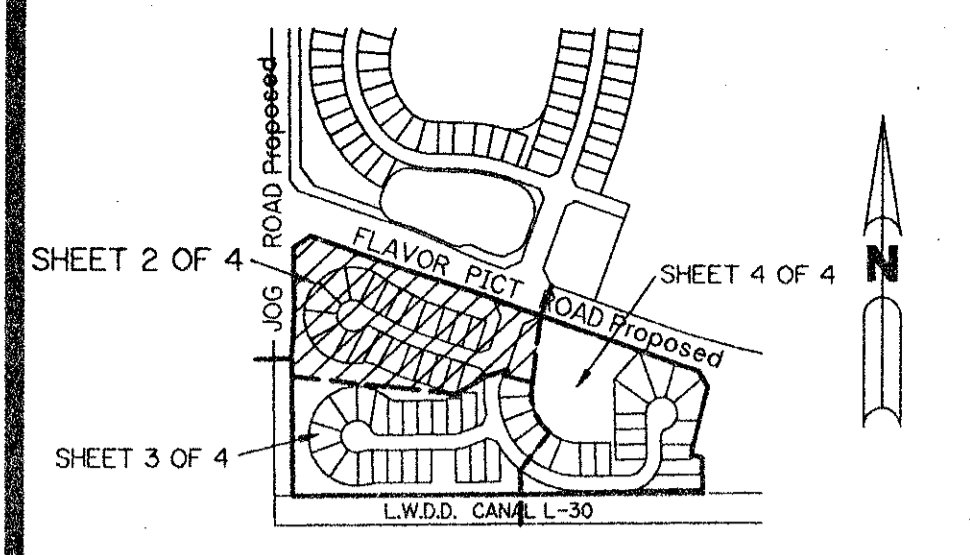


PLAT OF CORAL LAKES II

BEING A REPLAT OF A PORTION OF TRACT "C"
OF THE PLAT OF CORAL LAKES AS RECORDED IN PLAT BOOK 67, PAGES 197-198
LYING IN SECTION 3, TOWNSHIP 46 SOUTH, RANGE 42 EAST,
PALM BEACH COUNTY, FLORIDA

JANUARY, 1993 SHEET 2 OF 4



IMP. FEE
PET. 614-013
ALOC. #0001

- LEGEND**
- L.A.E. - LIMITED ACCESS EASEMENT
 - R - RADIUS
 - Δ - DELTA ANGLE
 - P.B. - PLAT BOOK
 - P.G.S. - PAGES
 - O.R. - OFFICIAL RECORD
 - P.U.D. - PLANNED UNIT DEVELOPMENT
 - P.L.S. - PROFESSIONAL LAND SURVEYOR
 - N.R. - NOT RADIAL
 - ST - SURVEY TIE LINE
 - - PERMANENT REFERENCE MONUMENT, PLS #4901
 - - PERMANENT CONTROL POINT, PLS #4901
 - O.E. - OVERHANG EASEMENT
 - U.E. - UTILITY EASEMENT
 - D.E. - DRAINAGE EASEMENT
 - F.P. - FLORIDA POWER AND LIGHT COMPANY
 - FE - FLOOD PLAIN EASEMENT
 - OS - OPEN SPACE
 - O.R.B. - OFFICIAL RECORD BOOK
 - R.O.W. - RIGHT-OF-WAY
 - L.M.E. - LAKE MAINTENANCE EASEMENT
 - L.M.A.E. - LAKE MAINTENANCE ACCESS EASEMENT
 - - EXISTING P.R.M. # 2633

THIS INSTRUMENT PREPARED BY
RAFAEL FILIPPELLI P.L.S. 4901 STATE OF FLORIDA
LAWSON, NOBLE AND ASSOCIATES, INC.
ENGINEERS PLANNERS SURVEYORS
WEST PALM BEACH, FLORIDA

SUBDIVISION # PLAT OF CORAL LAKES II
BOOK 70 PAGE 118
FLOOD ZONES FLOOD MAP # 2004
QUAD # 36 ZONING RT
SE ZIP CODE 33437
PUD NAME same
3/46/93

TAR = 457

0614-004

CORAL LAKES II 70/118 SHEET 2 OF 4