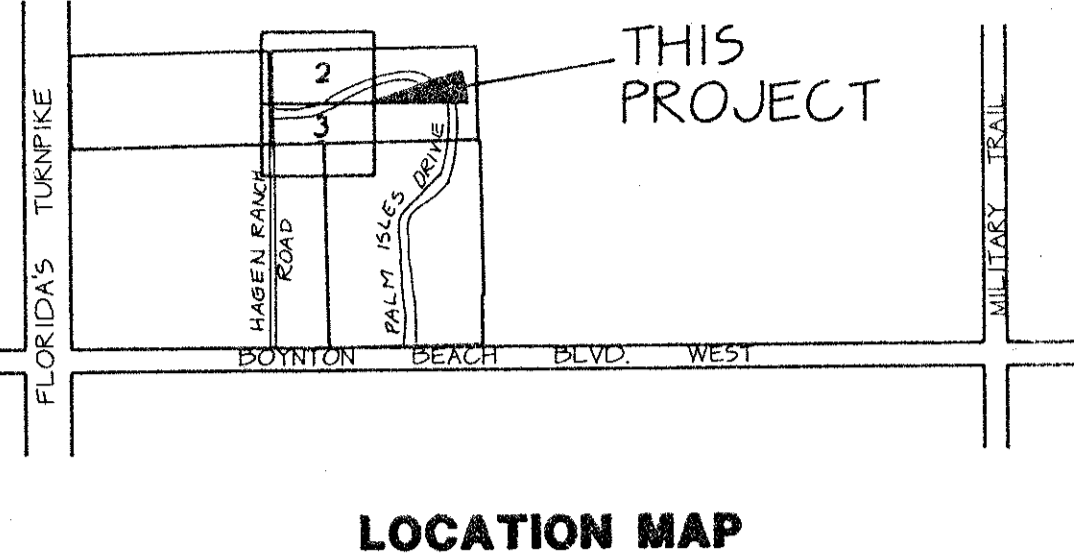


# PALM ISLES II-B, A P.U.D.

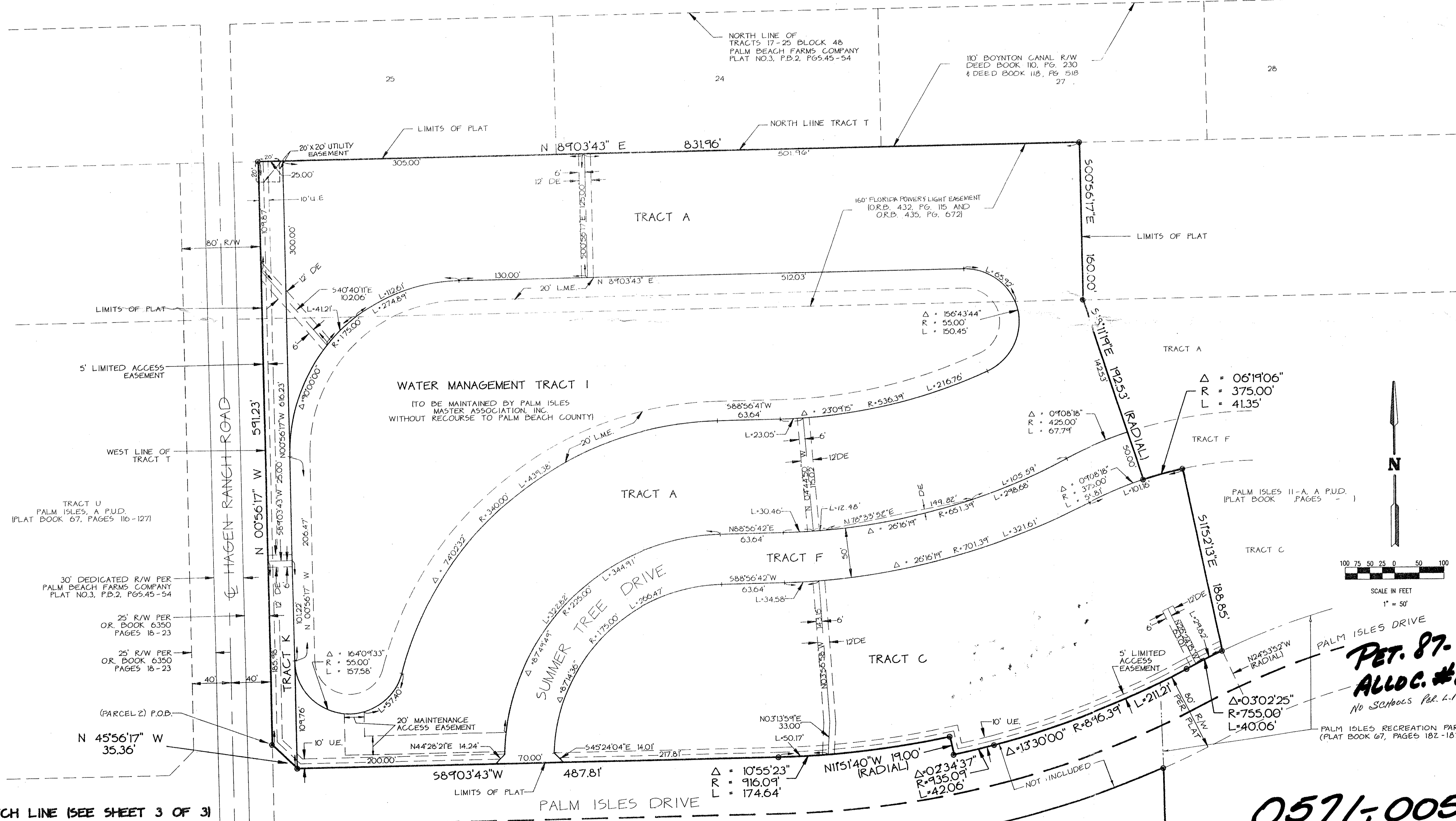
A REPLAT OF A PORTION OF TRACT T OF PALM ISLES, A P.U.D.  
AS RECORDED IN PLAT BOOK 67, PAGES 116 THROUGH 127 INCLUSIVE OF THE PUBLIC RECORDS OF PALM BEACH COUNTY, FLORIDA  
AND A REPLAT OF A PORTION OF PALM ISLES RECREATION PARCEL AS RECORDED IN PLAT BOOK 67, PAGES 182 AND 183 OF THE PUBLIC RECORDS  
OF PALM BEACH COUNTY, FLORIDA, ALL IN SECTION 21, TOWNSHIP 45 SOUTH, RANGE 42 EAST, PALM BEACH COUNTY, FLORIDA

THIS INSTRUMENT PREPARED BY JAMES E. PARK, P.L.S.  
WILLIAMS, HATFIELD & STONER, INC. - ENGINEERS PLANNERS SURVEYORS  
1325 SOUTH CONGRESS AVENUE, SUITE 118, BOYNTON BEACH, FLORIDA 33426

SHEET 2 OF 3



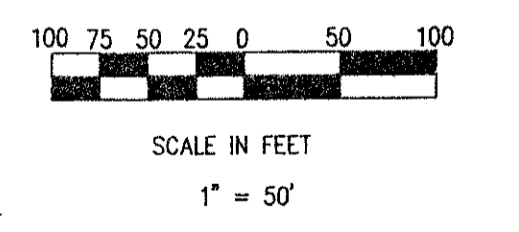
LOCATION MAP



MATCH LINE (SEE SHEET 3 OF 3)

SUPERVISION # PALM ISLES II-B  
BOOK 70 PAGE 115  
FLOOD ZONE # 185A  
QUAD # 50 ZONING RS  
SE 87-92 ZIP CODE 33437  
PID NAME same  
2/15/92

TAZ = 443



PET. 87-92  
ALLOC. #0001  
No Schools Per L. Pass. mem  
5/24/91

0571-005

PALM ISLES II-B 7/115