

# THE SHOPPES AT CRESTHAVEN, P.C.D.

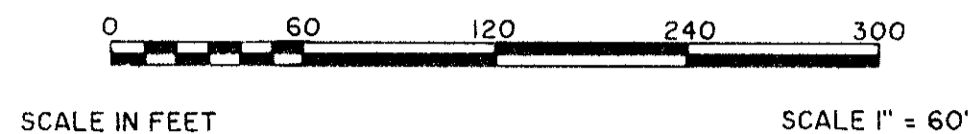
0606-001

89

LYING IN THE SOUTHWEST QUARTER (SW 1/4) OF SECTION 13 TOWNSHIP 44 SOUTH, RANGE 42 EAST  
PALM BEACH COUNTY, FLORIDA

OCTOBER, 1992

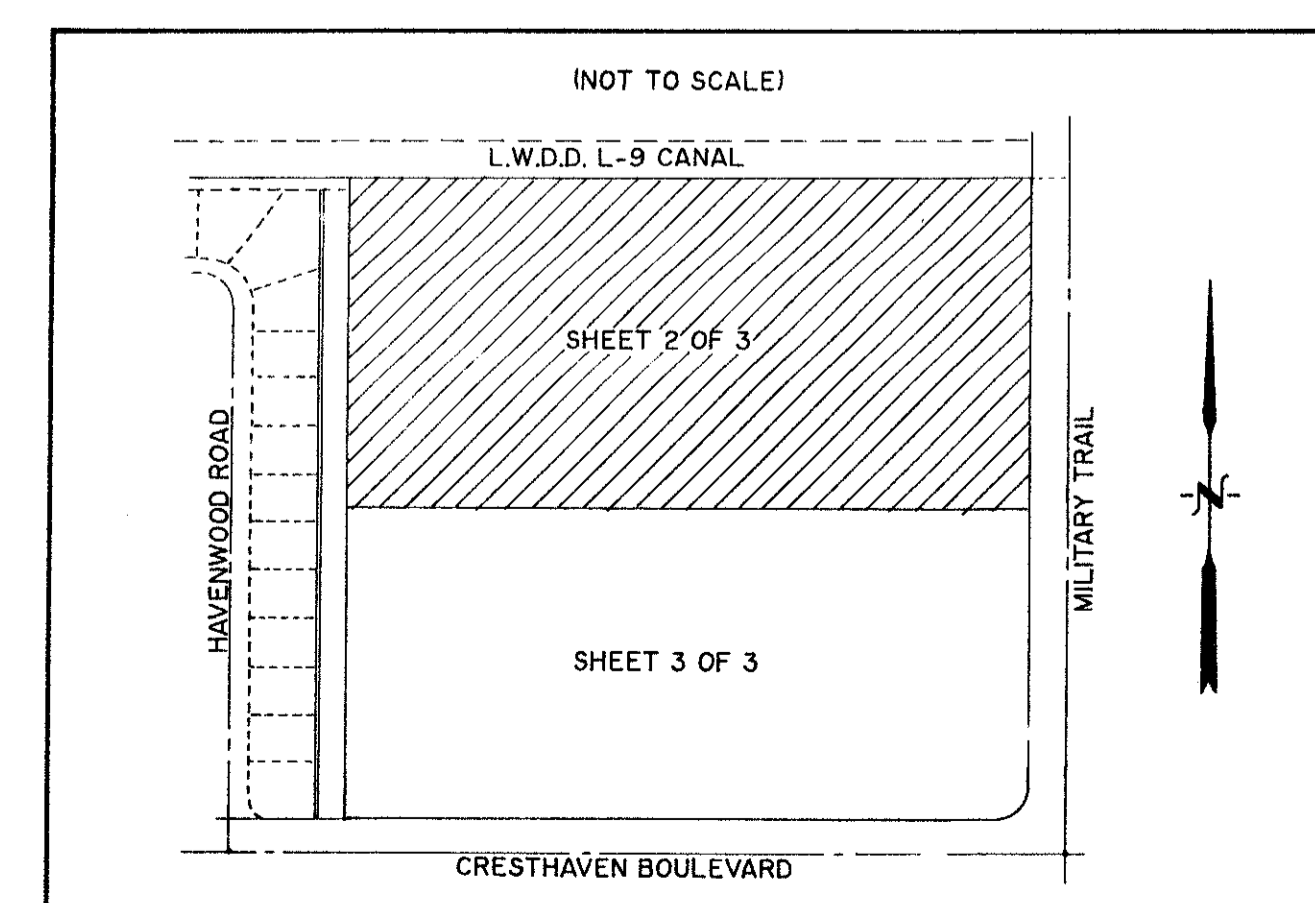
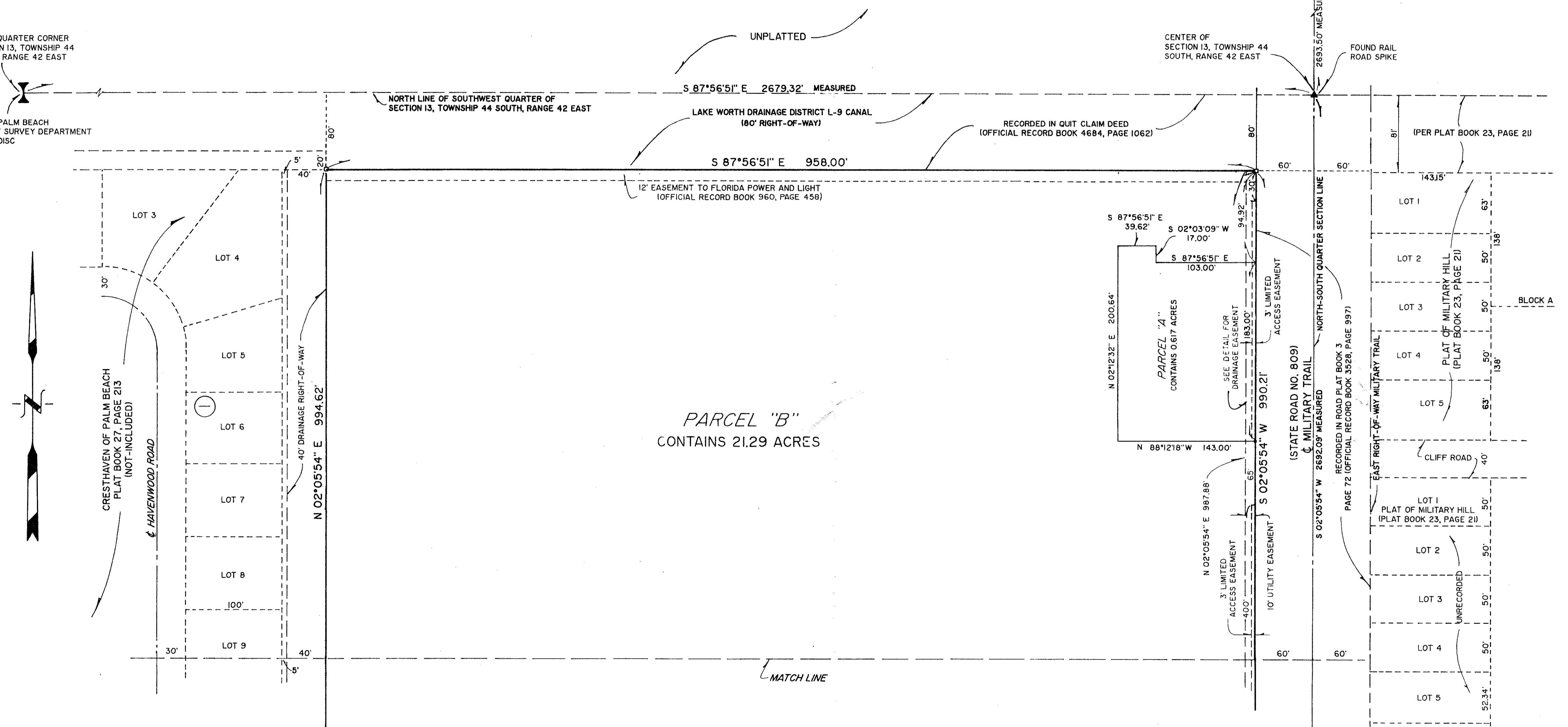
SHEET 2 OF 3



WEST QUARTER CORNER SECTION 13, TOWNSHIP 44 SOUTH, RANGE 42 EAST  
FOUND PALM BEACH COUNTY SURVEY DEPARTMENT BRASS DISC

NORTH QUARTER CORNER SECTION 13, TOWNSHIP 44 SOUTH, RANGE 42 EAST  
CENTER OF SECTION 13, TOWNSHIP 44 SOUTH, RANGE 42 EAST  
FOUND PALM BEACH COUNTY SURVEY DEPARTMENT BRASS DISC  
FOUND RAIL ROAD SPIKE

STATE OF FLORIDA  
COUNTY OF PALM BEACH  
This plat was filed for record at this day of 1993, and duly recorded in Plat Book No. on page.  
DOROTHY H. WILKEN, Clerk of Circuit Court  
BY \_\_\_\_\_  
DEPUTY CLERK



SUBDIVISION \* The Shoppes @ Cresthaven  
 BOOK TO PAGE 59  
 FLOOD MAP #165B  
 ZONING RM  
 QUAD # 32  
 SE ZIP CODE 33415  
 PUD NAME 12/11/92/42

TAZ = 292

PET. 80-41B

0606-001

70/89

**K & N SURVEYORS, INC.**  
 9040 BELVEDERE ROAD #100  
 WEST PALM BEACH, FL. 33411  
 (561) 900-5005

**THE SHOPPES AT CRESTHAVEN, P.C.D.**

DATE: MARCH, 1992 BY: B. BREWER PRICE: \$176/54 DRAWING NO: D-140