

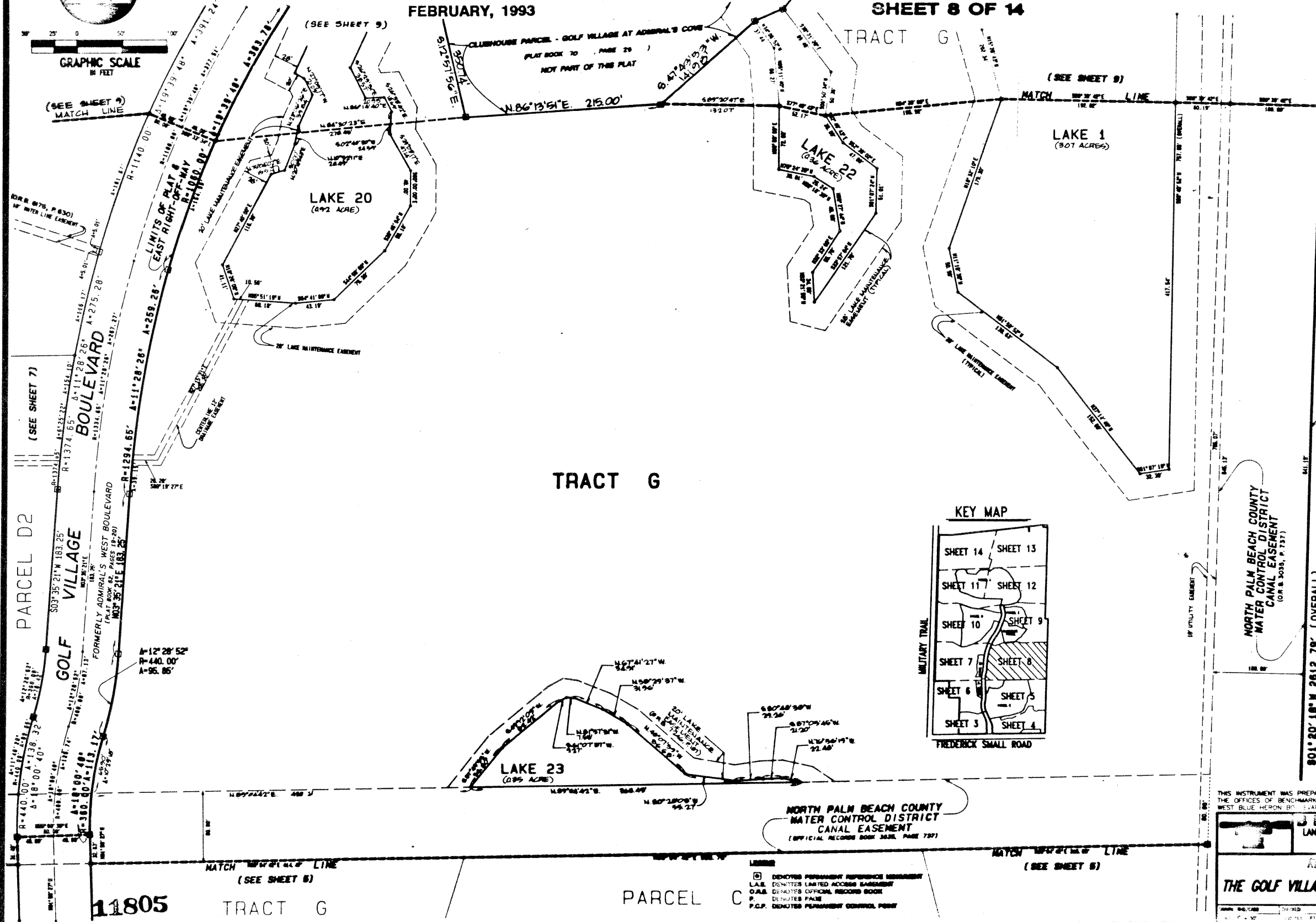
58 THE GOLF VILLAGE AT ADMIRAL'S COVE

BEING A REPLAT OF A PORTION OF ADMIRAL'S COVE WEST PLAT NO. 1, AS RECORDED IN PLAT BOOK 62, PAGE 19, PUBLIC RECORDS, PALM BEACH COUNTY, FLORIDA, AND LYING IN SECTION 13, TOWNSHIP 41 SOUTH, RANGE 42 EAST, TOWN OF JUPITER, PALM BEACH COUNTY, FLORIDA

FEBRUARY, 1993

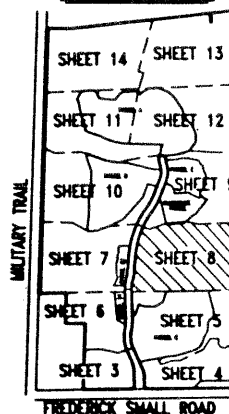
SHEET 8 OF 14

58



TRACT G

KEY MAP



FREDERICK SMALL ROAD

NORTH PALM BEACH COUNTY
WATER CONTROL DISTRICT
CANAL EASEMENT
(OFFICIAL RECORDS BOOK 3638, PAGE 737)

THIS INSTRUMENT WAS PREPARED BY W.M. R. VAN CAMPEN, IN AND FOR THE OFFICES OF BENCHMARK LAND SURVEYING & MAPPING, INC., 4152 WEST BLUE HERON BOULEVARD, SUITE 201, PALM BEACH, FLORIDA 33411

BENCHMARK
LAND SURVEYING & MAPPING, INC.
4152 WEST BLUE HERON BOULEVARD, SUITE 201
PALM BEACH, FLORIDA 33411
PHONE: 561-833-1400

RECORD PLAT
THE GOLF VILLAGE AT ADMIRAL'S COVE

DATE: 02/19/93
DRAWN: J.M. VAN CAMPEN
CHECKED: W.M. R. VAN CAMPEN
SCALE: AS SHOWN

(SEE SHEET 7)

PARCEL D2

GOLF VILLAGE

11805

TRACT G

PARCEL C

MATCH LINE (SEE SHEET 9)

801' 20' 18" N 2612.79' (OVERALL)

100' F.E.C. RAILROAD
RIGHT-OF-WAY
(DEED BOOK 1, PAGE 3)
(ROAD BOOK 4, PAGE 228)

NORTH PALM BEACH COUNTY
WATER CONTROL DISTRICT
CANAL EASEMENT
(OFFICIAL RECORDS BOOK 3638, PAGE 737)

LIMITS OF PLAT & WEST RIGHT-OF-WAY

EAST LINE OF SECTION 13/41/4E

(SEE SHEET 9) MATCH LINE

LIMITS OF PLAT & EAST RIGHT-OF-WAY

(SEE SHEET 9)

(SEE SHEET 9)

(SEE SHEET 9)

(SEE SHEET 9)

(SEE SHEET 9)

(SEE SHEET 9)

(SEE SHEET 9)

(SEE SHEET 9)

(SEE SHEET 9)

(SEE SHEET 9)

(SEE SHEET 9)

(SEE SHEET 9)

(SEE SHEET 9)

(SEE SHEET 9)

(SEE SHEET 9)

(SEE SHEET 9)

(SEE SHEET 9)

(SEE SHEET 9)

(SEE SHEET 9)

(SEE SHEET 9)

(SEE SHEET 9)